





ZEB-BT450 RUF  
Tower Speaker

USP

ZEB-BT450 RUF

Tower Speaker  
50W RMS  
LED Display  
5.25" Sub Woofer Drive  
Dual 3" Satellite Drives  
Deep Bass & Rich Treble  
RGB Lights  
Remote Control  
Texture Finish

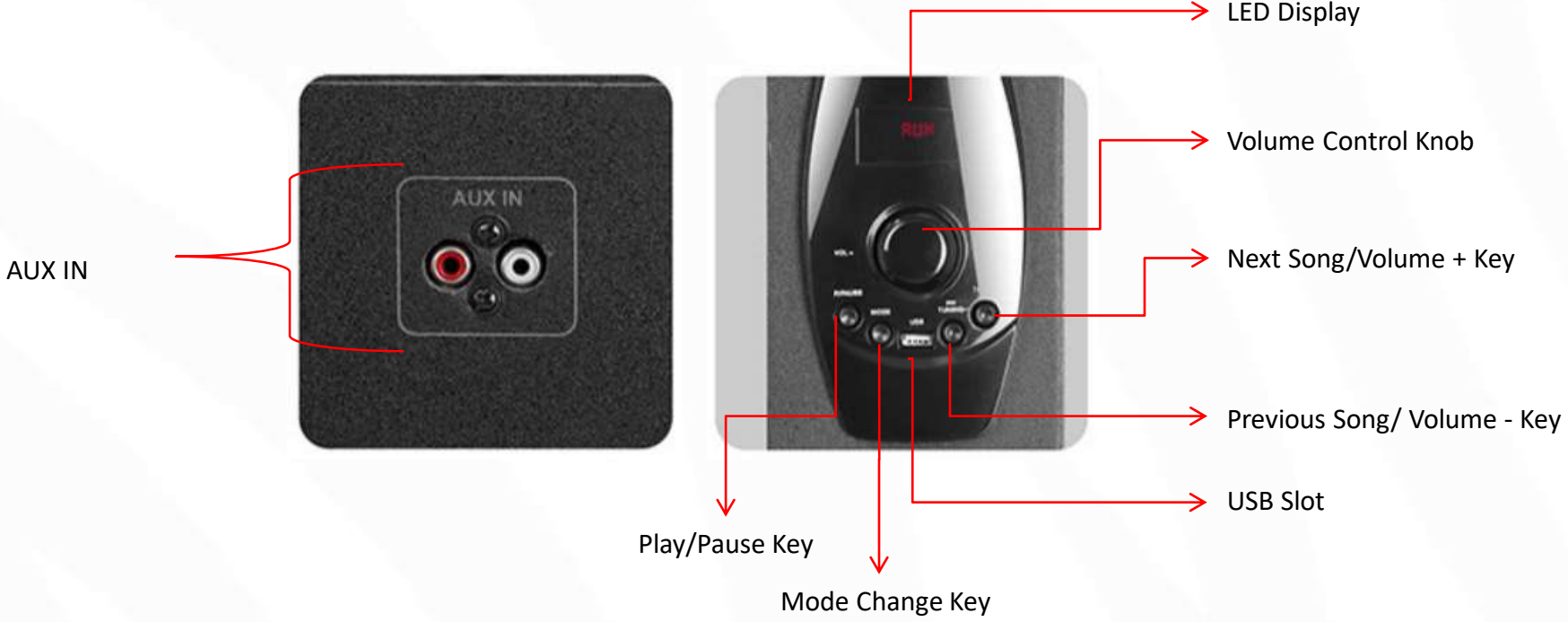


 ZEBRONICS

## Connectivity

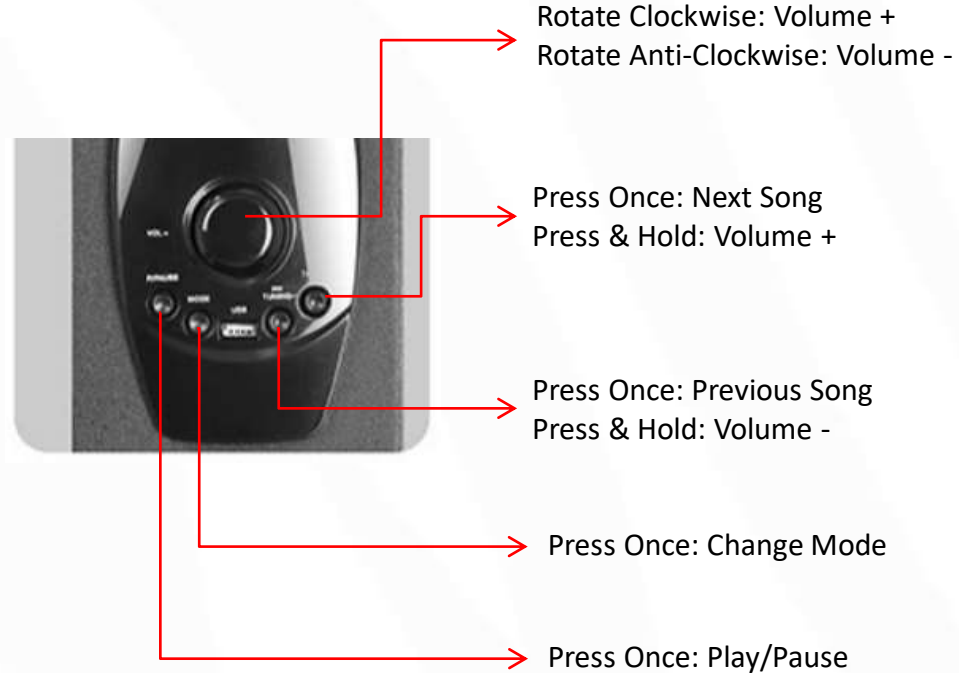
- BT
- FM Radio
- AUX
- USB





## BT Connectivity

- Turn on the speaker.
- Make sure the speaker is in BT Mode.
- Search for nearby BT devices in your mobile.
- Tap on BT Name “ZEBRONICS” to connect.



## FM Radio

- Switch the Speaker to FM Mode by pressing the Mode button.
- Press & Hold the Play/Pause button to scan the available FM channels.
- Once the scanning is done, the speaker will start playing from first saved channel.



Rotate Clockwise: Volume +  
Rotate Anti-Clockwise: Volume -

Press Once: Fine Tune +  
Press & Hold: Volume +

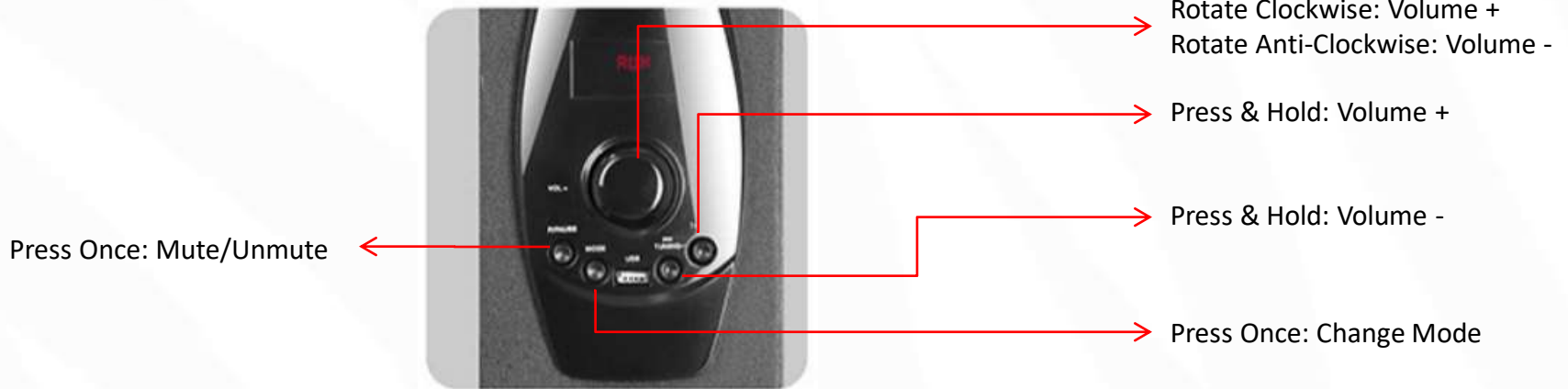
Press Once: Fine Tune -  
Press & Hold: Volume -

Press Once: Change Mode

Press Once: Next FM Channel  
Press & Hold: Auto scan FM Channels

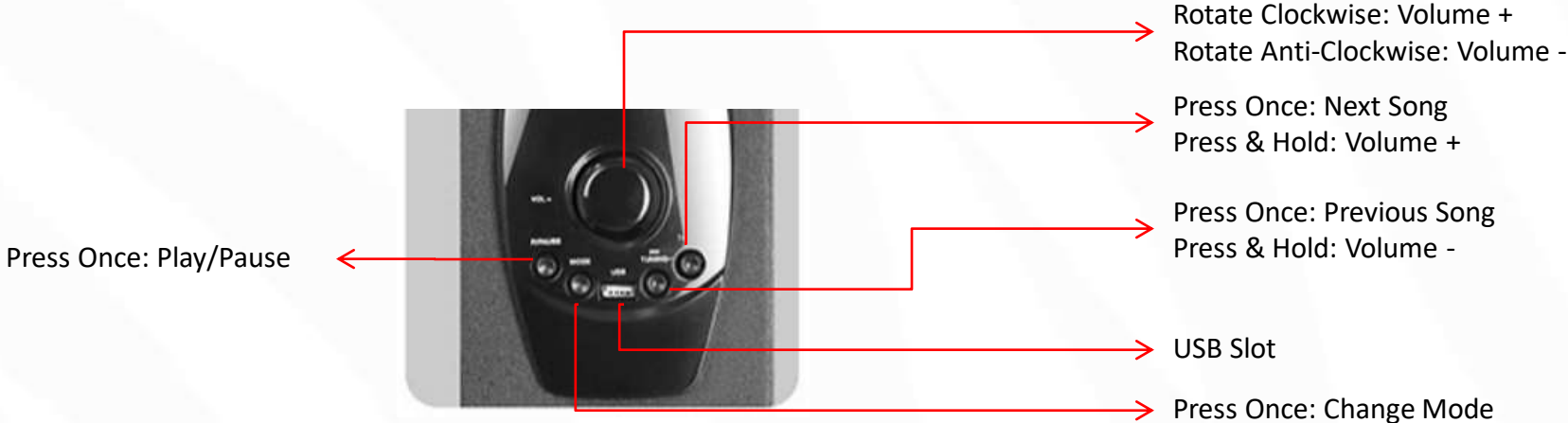
### AUX Mode

- Once the speaker is in AUX Mode, connect the RCA end of the AUX cable to the speaker & connect the other ends of the cable to a audio source (Eg. Computer, mobile).
- Now the songs played by the audio source can be heard through the speaker.



USB Mode

- When the speaker is on, insert the USB to the speaker.
- The speaker will detect the USB automatically & play the songs from the USB.





## Specifications

ZEB-BT450 RUF

- Output Power (RMS): 50W
- Driver Size: Subwoofer: 13.33 cm (5.25") x 1  
Satellite: 7.62 cm (3") x 2
- BT Version: 2.1
- Max Supported USB/Micro SD memory size: 32GB
- Product Dimension (WxDxH): 142 x 250 x 620mm
- Net. Weight: 5.3kg

## Package Contents

- Speaker: 1 Unit
- Remote Control: 1 Unit
- Input Cable: 1 Unit
- User Manual: 1 Unit

Thank You



[www.zebronics.com](http://www.zebronics.com)