



Smart Watch  
**FLAUNT***pro*  
User Manual



[www.zebronics.com](http://www.zebronics.com)

Dear Customer,

Thank you for purchasing **Zebronics FLAUNT PRO ZEB-FIT 3** Smart Watch. Please read this user manual carefully before operation & save this user manual for further reference.

## **Disclaimer**

This product should not be used for medical purpose, though it may monitor the BP, SpO2, Heart rate.

## **Features**

- Heart Rate ,SpO2 & BP monitor
- Step/Calorie/Distance
- Sleep Monitor
- Color display
- Customizable Watch face
- Call, SMS and third party app message notification
- Camera & Music Control
- Wrist sense
- 100+ Sport Modes
- Brightness Adjustment
- IP68 Water Proof
- Call Reject
- 5 days data storage
- Stopwatch / Countdown
- Water reminder
- Meditative Breathing

Weather forecast  
Sedentary Reminder  
9 Built-in watch Faces

## **Specification**

Support	: iOS 9.0 & Above / Android 5.0 & Above*
Vibration	: Yes
Water Resistant	: Ip68
Screen Size & Type	: 4.6 cm(1.83 in), TFT color display
Bluetooth	: v5.1
Control	: Capacitive touch screen and 1 button on the Right side
Data Storage	: 5 Days
Battery	: 230mAh, Built-in rechargeable
Standby Time	: 30 days
Charge Time	: 1.5-2.5 h
Strap	: Silicone
Product Dimension	
Strap (L x B)	: Long strap: 12 x 2 cm : Short strap: 9.5 x 2 cm
Core (W x D x H)	: 4.45 x 3.75 x 1 cm
Net Weight	: 40g

## **Package Contents**

Smart Watch	: 1 U
Charging Cable	: 1 U
QR Code Guide	: 1 U

## Product Representation



## Charging process

Use a 5VDC 2A(max) power adapter to charge the **Zeb Flaunt Pro (ZEB-FIT 3)** smart watch with the charging cable provided inside the package. Kindly ensure to charge the device fully before using it for the first time. The smart watch powers ON once plugged to the charger or it can be manually powered ON by pressing the button for few seconds.

## Power-on

Press and hold the power button to ON/OFF the smart watch.

## Usage instructions:

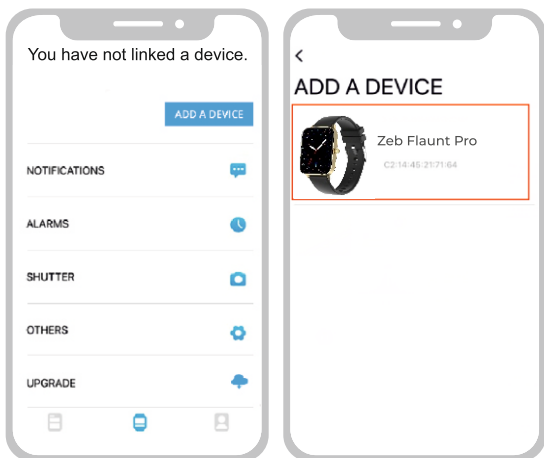
### 1. Installing ZEB-FIT 20 SERIES app:

Download the app by scanning the QR code or search for the name **ZEB- FIT 20 SERIES** in the play store / app store. Once installed, follow the steps directed by the app interface.

***Note:** Your device must support Android 5.0 / iOS 9.0 (or above)\* and BT version 4.0 (or above).*

## 2. Connecting FLAUNT PRO (ZEB-FIT 3) smart watch to the app:

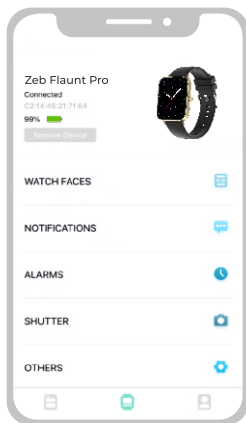
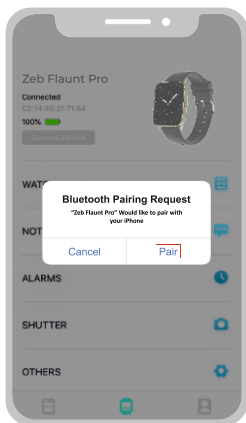
Click on 'Add device' option in the **ZEB-FIT 20 SERIES** app home page.



Select the device name **Zeb Flaunt Pro** from the scanned name list.

While pairing, iOS devices display a BT pairing requested which must be given 'Pair' to confirm and proceed. Android devices get connected directly.

Connection successful.



### 3. Display and interface of Zebronics FLAUNT PRO smart watch :

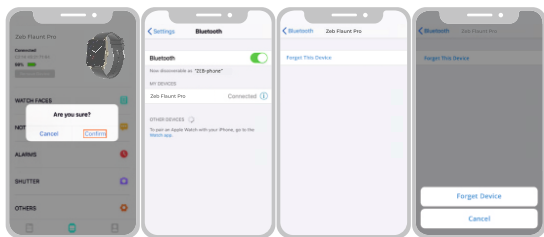
Once the device is powered ON and connected to the smart phone, the following are the display interface images which can be seen in Zebronics FLAUNT PRO smart watch.



## 4. Disconnecting process:

For Android based smart phones, the fitness watch can be disconnected directly from the **ZEB – FIT 20 SERIES** app interface by simply clicking on the option as shown in the below image.

For iOS devices, once the above step is done, kindly ensure the smart watch name is disconnected from the BT menu of the iOS device, as shown below.



**Note:** Do not use the fitness watch in the water with temperatures above 42°C. For any repairs please take the fitness watch to the authorised service center.

<https://zebronics.com/pages/service-centres>

**ISO 9001:2015 Certified Company**  
**www.zebronics.com**