



ZEBRONICS
ALWAYS AHEAD

Smart Watch
ZEB **FIT280CH**



User Manual

www.zebronics.com

Dear Customer,

Thank you for purchasing **ZEB-FIT280CH** Smart Fitness Watch. Please read this user manual carefully before operation & save this user manual for further reference.

Disclaimer

This product should not be used for medical purpose, though it may monitor the BP, SpO2, Heart rate.

Features

Heart Rate monitor

Pedometer

Color display

Customizable Watch face

Call, SMS and third party app message notification

Wrist sense

12 Sports Mode

Weather forecast

Stop watch

IP68 WaterProof

SpO2

Blood pressure

Call Reject

Dual Menu UI

Meditative breathing

Specification

| | |
|--------------------|--|
| Support | : iOS 10.0 & Above / Android 5.0 & Above* |
| Vibration | : Yes |
| Water Resistant | : IP68 |
| Screen Size & Type | : 3.55cm, TFT Color display |
| Bluetooth | : 5.0 |
| Control | : Capacitive touch screen and 1 button on the Right side |
| Data Storage | : 7 days |
| Battery | : 200mAh, Built-in rechargeable |
| Standby Time | : 30 days |
| Charge Time | : 1.5-2 H |
| Strap | : Silicone |
| Product Dimension | |
| Core (W x D x H) | : 40.5 x 35 x 10.5 mm |
| Strap (L x B) | |
| Long strap | : 120 x 20 mm |
| Short strap | : 95 x 20 mm |
| Net Weight | : 40g |

Package Contents

| | |
|---------------------|----------|
| Smart Fitness watch | : 1 Unit |
| Charging Cable | : 1 Unit |

Product Representation



Charging process

Use a 5V DC power adapter to charge the **ZEB-FIT280CH** smart fitness watch with the charging cable provided inside the package. Kindly ensure to charge the device fully before using it for the first time. The smart fitness watch powers ON once plugged to the charger or it can be manually powered ON by pressing the button for few seconds.

Power-on

Press and hold the power button to ON/OFF the smart fitness watch.

Usage Instructions

1. Installing ZEB-FIT 20 SERIES app

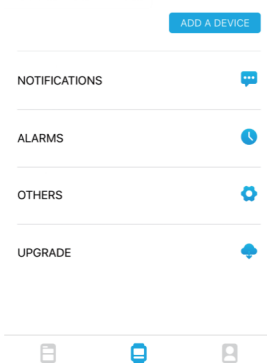
Download the app by scanning the QR code or search for the name **ZEB- FIT 20 SERIES** in the play store / app store. Once installed, follow the steps directed by the app interface.

***Note:** your mobile phone must support Android 5.0 or iOS 10.0 or above, and Bluetooth 4.0 or above.*

2. Connecting ZEB-FIT280CH smart fitness watch to the app

1. Click on 'ADD A DEVICE' option in the **ZEB-FIT20 SERIES** app home page.
2. Select the device name **ZEB-FIT280CH** from the scanned name list.

You have not linked a device.



Add device

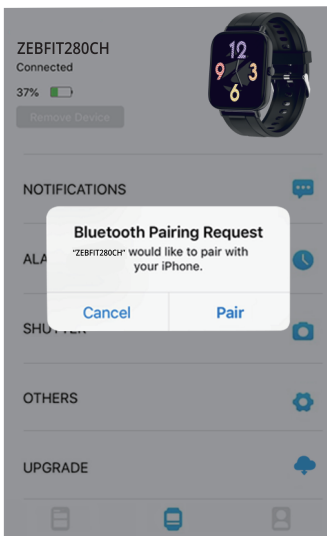


ZEBFIT280CH
E9:38:E6:D7:D4:3C

Please select your bracelet in the petition list

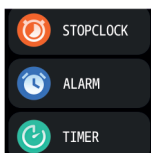
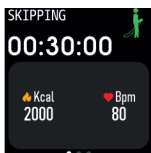
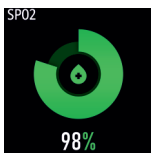
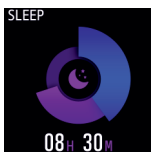
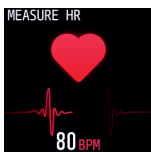
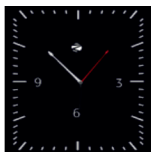
Searching for bracelet...

While pairing, iOS devices display a BT pairing requested which must be given “Pair” to confirm and proceed. Android devices get connected automatically.



3. Display & Interface of ZEB-FIT280CH Smart Fitness Watch

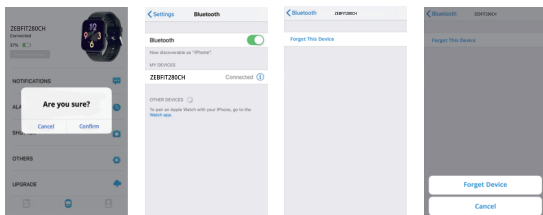
Once the device is powered ON and connected to the smartphone, the following display interface images which can be seen in **ZEB-FIT280CH** Smart fitness watch.



4. Disconnecting process

For Android based smart phones, the smart fitness watch can be disconnected directly from the **ZEB - FIT 20 SERIES** app interface by simply clicking on the option as shown in the below image.

For iOS devices, once the above step is done, kindly ensure the smart fitness watch name is disconnected from the BT menu of the iOS device, as shown below.



Note: Do not use the smart fitness watch in the water with temperatures above 42°C. For any repairs please take the smart fitness watch to the authorised service centre.

<https://zebronics.com/pages/service-centres>

ISO 9001:2015 Certified Company
www.zebronics.com