



**ZEBRONICS**  
ALWAYS AHEAD

Smart Watch  
**ZEB FIT 3220 CH**



**User Manual**

[www.zebronics.com](http://www.zebronics.com)

## **Dear Customer,**

Thank you for purchasing **ZEB-FIT3220CH** Fitness Band. Please read this user manual carefully before usage & save this user manual for further reference.

## **Features**

Heart Rate monitor

Pedometer

Color display

Customizable Watch face

Call, SMS and third party app message notification

Wrist sense

Brightness Adjustment

8 Sports mode

Weather forecast

Stop watch

IP68 WaterProof

SpO2

Blood pressure

Call Reject

## **Specification**

Support	: iOS 8.0 & Above / Android 4.4 & Above*
Vibration	: Yes
Water Resistant	: IP68
Screen Size & Type	: 3.3cm,TFT color display
Bluetooth	: v5.0
Control	: Capacitive touch screen & 1 button on the Right side
Data Storage	: 7 Days
Battery	: 200mAh, Built-in rechargeable
Standby Time	: 30 days
Charge Time	: 1.5-2 H
Product Dimension	
Core (Dia x H)	: 42.9 x 9.5 mm
Net Weight	: 36g

## **Package Contents**

Fitness band	: 1 Unit
Charging Cable	: 1 Unit

## Product Representation



## Charging process

Use a 5V DC power adapter / charger to charge the **ZEB-FIT3220CH** fitness watch with the charging cable provided inside the package. Kindly ensure to charge the device fully before using it for the first time. The fitness watch powers ON once plugged to the charger or it can be manually powered ON by pressing the button for few seconds.

## Usage instructions:

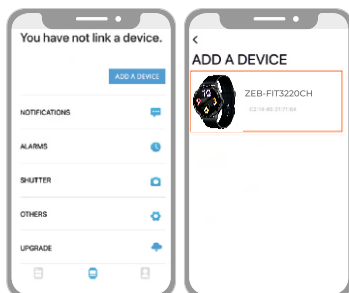
### 1. Installing **ZEB-FIT 20 SERIES** app:

Download the app by scanning the QR code or search for the name **ZEB-FIT 20 SERIES** in the play store / app store. Once installed, follow the steps directed by the app interface.

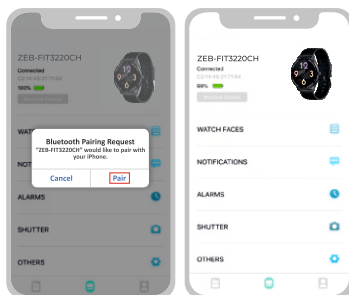
*Note: Your device must support Android 4.4 / iOS 8.0 (or above) and BT version 4.0 (or above).*

## 2. Connecting ZEB-FIT3220CH fitness watch to the app:

- Click on 'Add device' option in the **ZEB-FIT 20 SERIES** app home page.

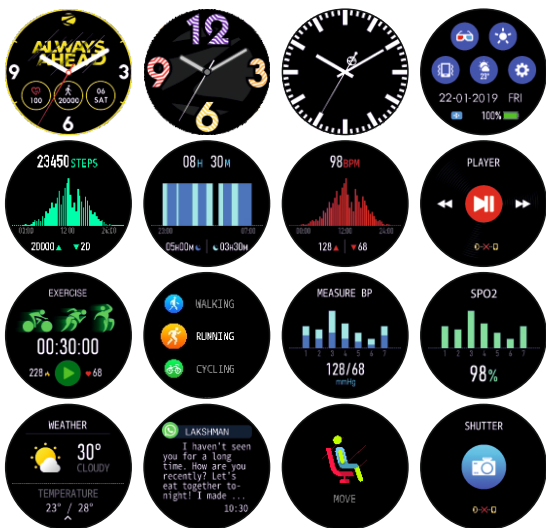


- Select the device name **ZEB-FIT3220CH** from the scanned name list. While pairing, iOS devices display a BT pairing request which must be given 'Pair' to confirm and proceed. Android devices get connected directly.
- Connection successful.



### 3. Display and interface of ZEB-FIT3220CH fitness watch:

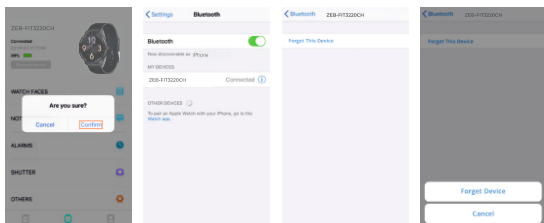
- Once the device is powered ON and connected to the smart phone, the following are the display interface images which can be seen in **ZEB-FIT3220CH** fitness watch.



### 4. Disconnecting process:

- For Android based smart phones, the fitness watch can be disconnected directly from the **ZEB-FIT 20 SERIES** app interface by simply clicking on the option as shown in the below image.

- For iOS devices, once the above step is done, kindly ensure the fitness watch name is disconnected from the BT menu of the iOS device, as shown below.



**Note:** Do not use the fitness watch in the water with temperatures above 42°C. For any repairs please take the fitness watch to the authorised service center

<https://zebronics.com/pages/service-centres>

**ISO 9001:2015 Certified Company**  
**www.zebronics.com**