



ZEBRONICS
ALWAYS AHEAD

Smart Fitness Band
ZEB FIT4220CH



User Manual

www.zebronics.com

Dear Customer,

Thank you for purchasing **ZEB-FIT4220CH** Fitness Band. Please read this user manual carefully before usage & save this user manual for further reference.

Features

Heart Rate monitor

Pedometer

Color display

Customizable Watch face

Call, SMS and third party app message notification

Wrist sense

Brightness Adjustment

7 Sports mode

Weather forecast

Stop watch

IP67 Waterproof

SpO2

Blood pressure

Call Reject

Water reminder

Call Function

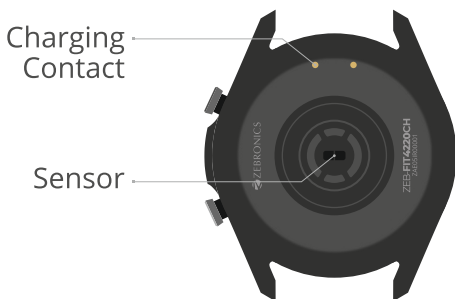
Specification

Support	: iOS 9.0 & Above / Android 4.4 & Above*
Vibration	: Yes
Water Resistant	: IP67
Screen Size & Type	: 3.3cm,TFT color display
Bluetooth	: v5.0
Control	: Capacitive touch screen & 2 buttons on the Right side
Data Storage	: 5 Days
Battery	: 220mAh, Built-in rechargeable
Standby Time	: 30 days
Charge Time	: 1.5-2 H
Strap	: Silicone
Product Dimension	
Core	: 47 x 12 mm (Dia x H)
Strap	
Long strap	: 122 x 20 mm (L x B)
Short strap	: 90 x 20 mm (L x B)
Net Weight	: 60g

Package Contents

Fitness band	: 1 Unit
Charging Cable	: 1 Unit

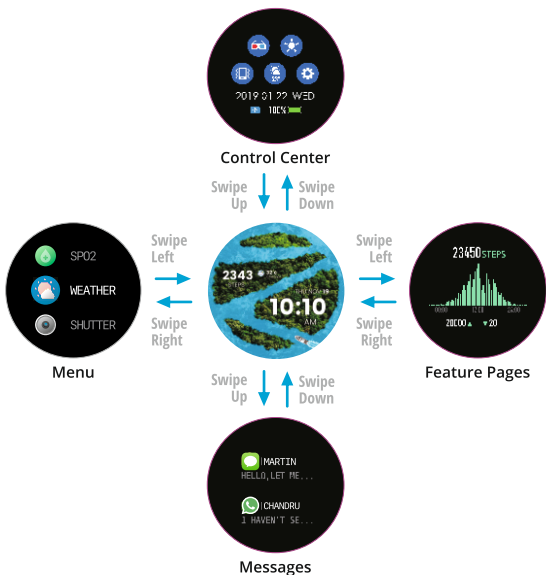
Product Representation



Power On

Press and hold the power button to ON/OFF the fitness band. Kindly charge the fitness band before usage.

Touch Screen Control



Usage Instructions

1. Download and Install the APP

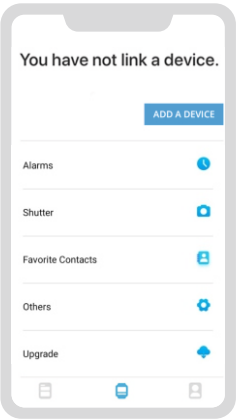
For iOS devices, open the APP store and search for **ZEB-FIT20 SERIES** app.

For Android devices, open Play store to download and install **ZEB-FIT20 SERIES** app.

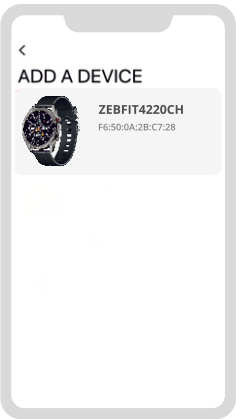
Note: Your mobile phone must support Android 4.4 or iOS 9.0 or above.

2. Connecting with the APP

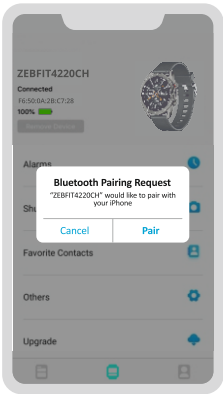
I) Click on “Add A Device”



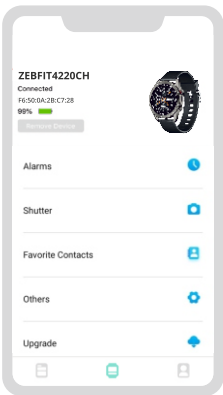
ii) Select the device name **ZEBFIT4220CH** on the scanned device list



iii) The iOS devices will show a Bluetooth pairing request and you can click on Bluetooth "Pair" to confirm. Android devices will connect automatically.



iv) Successfully Connected



3. Call Function - connection and usage



Open the smart phone bluetooth menu and scan for nearby devices. Connect to the device name ZEBFIT4220CH_XXX. These steps apply for both Android and iOS smart phones.

This helps to use the call function of **ZEB-FIT4220CH** fitness band. Once connected the fitness band will show the phone dialer options.

4. Power-on status

The following are the various interfaces which can be seen once the band is powered ON.

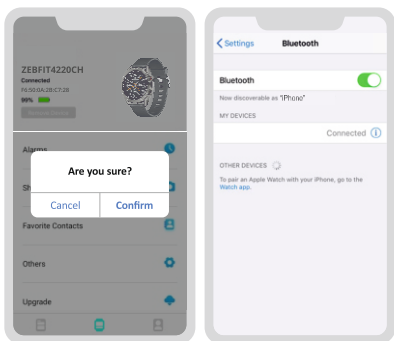


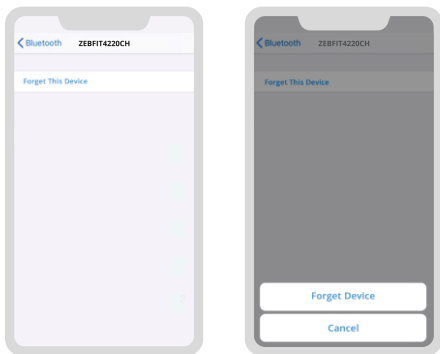


5. Disconnecting from the smartphone

For the Android devices, the device can be disconnected from your mobile phone by simply clicking on Remove device.

For iOS devices, after removing, the fitness band from the app, kindly disconnect/forget the bluetooth device name from the smart phone bluetooth menu.





NOTE: It is not recommended to use the band at water temperature higher than 42° C

Disclaimer:

**This product should not be used for medical purpose, though it may monitor the BP, SpO2, Heart rate.*

ISO 9001:2015 Certified Company
www.zebronics.com