



ZEBRONICS
ALWAYS AHEAD

Smart Fitness Watch
ZEB FIT920CH



User Manual

www.zebronics.com

Dear Customer,

Thank you for purchasing **ZEB-FIT920CH** Smart Fitness Watch. Please read this user manual carefully before operation & save this user manual for further reference.

Features

Heart Rate monitor

Pedometer

Color display

Customizable Watch face

Call, SMS and third party app message notification

Wrist sense

Brightness Adjustment

Multi Sports mode

Weather forecast

Stop watch

Ip67 Water Proof

Specification

Support	: iOS 8.0 & Above / Android 4.4 & Above*
Vibration	: Yes
Water Resistant	: IP67
Screen Size & Type	: 3.5cm,TFT color display
Bluetooth	: 5.0
Control	: Capacitive touch screen and 1 button on the Right side
Data Storage	: 5 days

Battery	: 180mAh, Built-in rechargeable
Standby Time	: 30 days
Charge Time	: 1.5-2 H
Strap	: Silicone
Product Dimension	
Core (W x D x H)	: 38.7 x 49 x 10.7 mm
Strap (L x B)	
Long strap	: 122 x 20 mm
Short strap	: 95 x 20 mm
Net Weight	: 46g

Package Contents

Fitness band	: 1 Unit
Charging Cable	: 1 Unit

Product Representation



Power-on

Long press the side button for 3 seconds or plug in the charger to power on the Smart Fitness Watch.

Usage Instructions

1.Download and install the APP

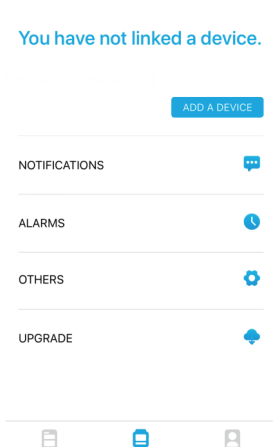
For iOS devices, open the APP store and search for **ZEB-FIT 20 SERIES** app.

For Android devices, open Play store to download and install **ZEB-FIT 20 SERIES** app.

***Note:** your mobile phone must support Android 4.4 or iOS 8.0 or above, and Bluetooth 4.0 or above.*

2. Connecting with the App

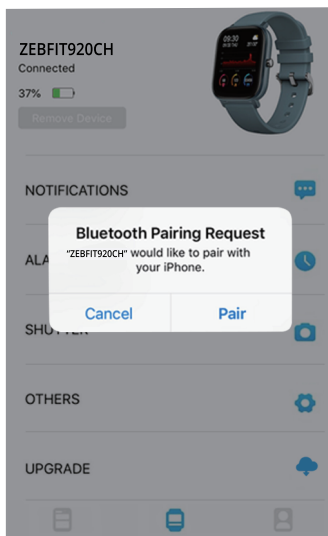
1. Click on “Add a Device”.



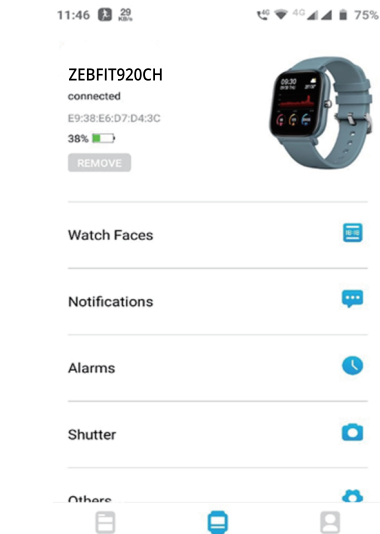
2. Select your device in the device list scanned.



3. The iOS devices will show a Bluetooth pairing request and you can click on “Pair” to confirm. Android devices will connect directly.

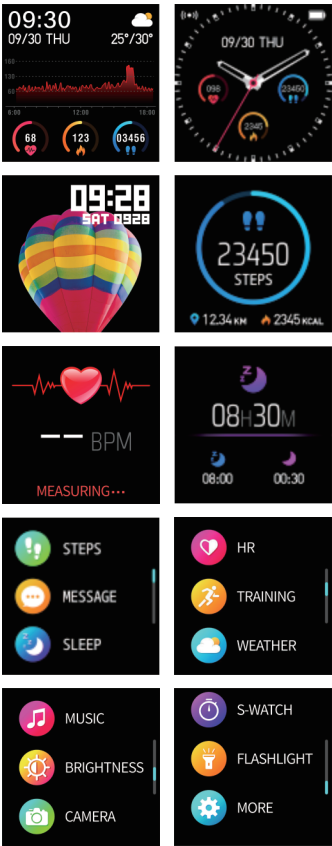


4. Succesfully Connected



3. Display & Interface of ZEB-FIT920CH Smart Fitness Watch

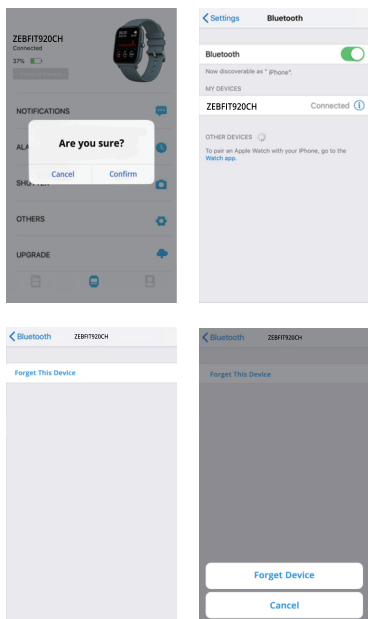
Once the device is powered ON and connected to the smartphone, the following display interface images which can be seen in **ZEB-FIT920CH** Smart fitness watch.



4. Remove Device

For the Android devices, the devices can be disconnected from your mobile phone by simply clicking on Remove device.

For iOS devices, after removing, you need to click on the symbol on the right in bluetooth setting, and choose "Forget This device".



ISO 9001:2015 Certified Company
www.zebronics.com