

# ZEBRONICS

Smart watch with Call Function

## DRIP

### User Manual

[www.zebronics.com](http://www.zebronics.com)



Dear Customer,

Thank you for purchasing **DRIP** Smart Watch. Please read this user manual carefully before operation & save this user manual for further reference.

## **Disclaimer**

This product should not be used for medical purpose, though it may monitor the BP, SpO2, Heart rate.

## **Features**

- Heart Rate , SpO2 & BP monitor
- Step/Calorie/Distance
- Sleep Monitor
- Color Display
- Customizable Watch Face
- Calling Function (Via BT)
- Call, SMS and Third party App Message Notification
- Wrist Sense
- 100+ Sport Modes
- Weather Forecast
- Stopwatch / Countdown
- IP67 Water Proof
- Camera & Music Control
- Call Reject
- Brightness Adjustment
- Water Reminder
- Quick Access
- Menstrual Tracker

- 8 Menu UI
- Meditative Breathing
- 5 days data storage

## Specification

Support	: iOS 9.0 & Above / Android 5.0 & Above*
Vibration	: Yes
Water Resistant	: Ip67
Screen Size & Type	: 4.29cm, TFT Color display
Bluetooth	: v5.1 + v3.0
Control	: Capacitive touch screen and 1 button on the Right side
Data Storage	: 5 Days
Battery	: 250mAh, Built-in rechargeable
Standby Time	: 30 days
Charge Time	: 1.5-2.5 h
Product Dimension	
Core (W x D x H)	: 44 x 36 x 11 mm
Net Weight	: 45g

## Package Contents

Smart Watch	: 1 U
Charging Cable	: 1 U
QR Code Guide	: 1 U

## Product Representation



## Charging process

Use a 5V DC power adapter to charge the **DRIP (ZEB-FIT9220CH)** smart watch with the charging cable provided inside the package. Kindly ensure to charge the device fully before using it for the first time. The smart fitness watch powers ON once plugged to the charger or it can be manually powered ON by pressing the button for few seconds.

## Power-on

Press and hold the power button to ON/OFF the smart watch.

## Usage instructions:

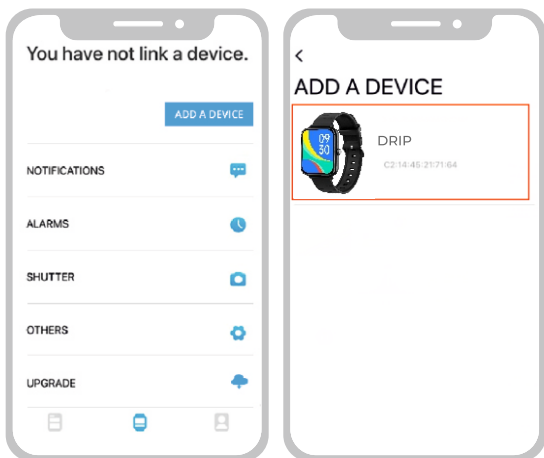
### 1. Installing ZEB-FIT 20 SERIES app:

Download the app by scanning the QR code or search for the name **ZEB- FIT 20 SERIES** in the play store / app store. Once installed, follow the steps directed by the app interface.

***Note:** Your device must support Android 5.0 / iOS 9.0 (or above)\* and BT version 4.0 (or above).*

## 2. Connecting DRIP (ZEB-FIT9220CH) smart watch to the app:

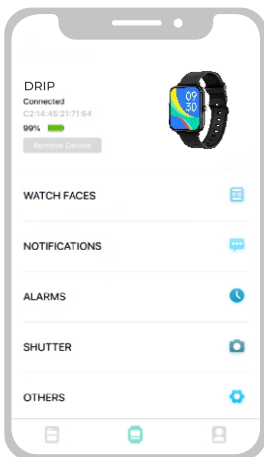
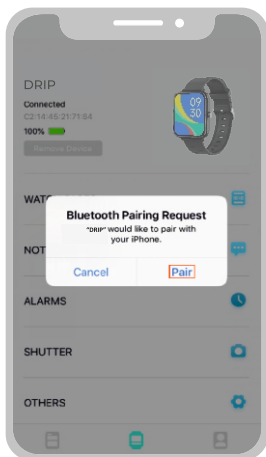
Click on 'Add device' option in the **ZEB-FIT 20 SERIES** app home page.



Select the device name **DRIP** from the scanned name list.

While pairing, iOS devices display a BT pairing requested which must be given 'Pair' to confirm and proceed. Android devices get connected directly.

Connection successful.



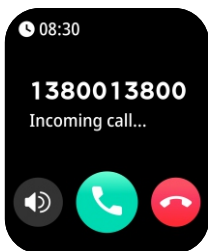
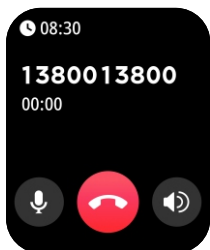
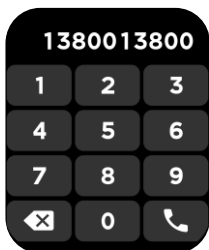
### 3. Call function (via BT) – connection and usage:

Enable the secondary BT from the watch settings BT: OFF > BT: ON

Now open your smart phone's BT menu and scan for nearby devices.

Connect to the device name **DRIP** (these steps apply for both Android and iOS smart phones)

Once connected, you can now use the watch dialer option and voice call function (via BT)



#### 4. Display and interface of DRIP (ZEB-FIT9220CH) smart watch:

Once the device is powered ON and connected to the smart phone, the following are the display interface images which can be seen in **DRIP (ZEB-FIT9220CH)** smart watch.

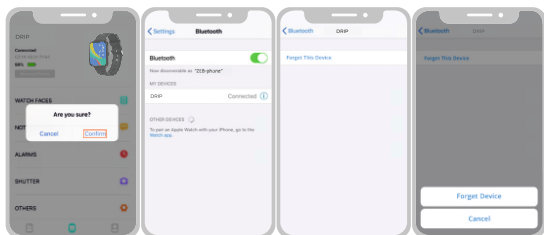




## 5. Disconnecting process:

For Android based smart phones, the fitness watch can be disconnected directly from the **ZEB – FIT 20 SERIES** app interface by simply clicking on the option as shown in the below image.

For iOS devices, once the above step is done, kindly ensure the fitness watch name is disconnected from the BT menu of the iOS device, as shown below.



**Note:** Do not use the fitness watch in the water with temperatures above 42°C. For any repairs please take the fitness watch to the authorised service center.

<https://zebronics.com/pages/service-centres>

**ISO 9001:2015 Certified Company**  
**www.zebronics.com**