

 ZEBRONICS

Smart Watch with BT Calling

CIRCLE



User Manual

www.zebronics.com

Dear Customer,

Thank you for purchasing **ZEBRONICS CIRCLE** Smart Watch. Please read this user manual carefully before operation & save this user manual for further reference.

Disclaimer

This product should not be used for medical purpose, though it may monitor the BP, SpO2, Heart rate.

Features

- Heart Rate, SpO2 & BP monitor
- Step/Calorie/Distance
- Circular Full Touch Color Display
- Customizable Watch face
- Call, SMS and third party app message notification
- Wrist sense
- Brightness Adjustment
- 100+ Sports mode
- Weather forecast
- Stop Watch
- IP67 WaterProof
- Call Function (via BT)
- Water / Sedentary reminder
- Menstrual Tracking
- Dual Menu UI
- Meditative Breathing
- Alarm Clock
- Weather forecast

Specification

Support	: iOS 9.0 & Above / Android 5.0 & Above*
Vibration	: Yes
Water Resistant	: IP67
Screen Size & Type	: 3.5cm (1.39 In), TFT Color Display
Bluetooth	: v5.1 + v3.0
Control	: Capacitive touch screen and a button on the Right side
Data Storage	: 5 Days
Battery	: 250mAh, Built-in rechargeable
Standby Time	: 30 days
Charge Time	: 1.5-2 h
Strap	: Silicone
Product Dimension	
Core (Dia x H)	: 4.6 x 1 cm
Strap (L x B)	
Long strap	: 12 x 2.2 cm
Short strap	: 9.5 x 2.2 cm
Net Weight	: 45g

Package Contents

Smart Watch	: 1 U
Charging Cable	: 1 U
QR Code Guide	: 1 U

Product Representation



Charging Process

Use a 5V 2A (Max.) DC power adapter to charge the **CIRCLE (ZEB-FIT 2)** smart watch with the charging cable provided inside the package. Kindly ensure to charge the device fully before using it for the first time. The smart fitness watch powers ON once plugged to the charger or it can be manually powered ON by pressing the button for few seconds.

Power-On

Press and hold the power button to ON/OFF the smart watch.

Usage instructions:

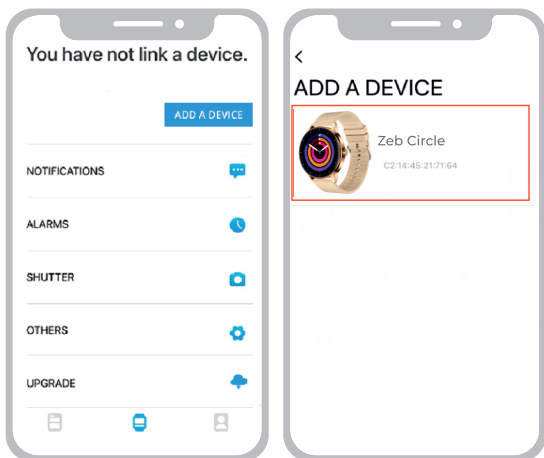
1. Installing ZEB-FIT 20 SERIES app:

Download the app by scanning the QR code or search for the name **ZEB-FIT 20 SERIES** in the play store / app store. Once installed, follow the steps directed by the app interface.

Note: Your device must support Android 5.0 / iOS 9.0 (or above)

2. Connecting CIRCLE (ZEB-FIT 2) smart watch to the app:

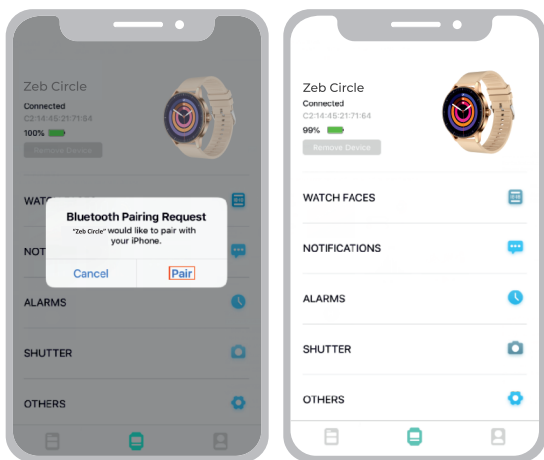
Click on 'Add device' option in the **ZEB-FIT 20 SERIES** app home page.



Select the device name **Zeb Circle** from the scanned name list.

While pairing, iOS devices display a BT pairing requested which must be given 'Pair' to confirm and proceed. Android devices get connected directly.

Connection successful.



3. Call function (via BT) - connection and usage:

Enable the secondary BT from the watch settings BT: OFF > BT: ON

Now open your smart phone's BT menu and scan for nearby devices.

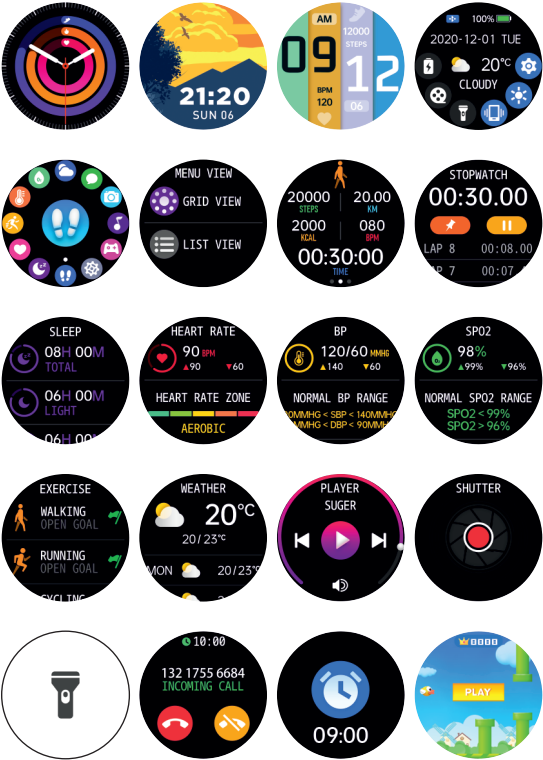
Connect to the device name **Zeb Circle** (these steps apply for both Android and iOS smart phones)

Once connected, you can now use the watch dialer option and voice call function (via BT)



4. Display and interface of CIRCLE (ZEB-FIT 2) smart watch:

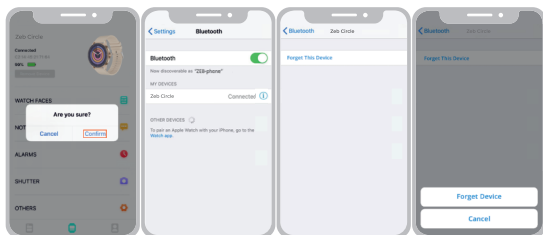
Once the device is powered ON and connected to the smart phone, the following are the display interface images which can be seen in **CIRCLE (ZEB-FIT 2)** smart watch.



5. Disconnecting process:

For Android based smart phones, the fitness watch can be disconnected directly from the **ZEB – FIT 20 SERIES** app interface by simply clicking on the option as shown in the below image.

For iOS devices, once the above step is done, kindly ensure the fitness watch name is disconnected from the BT menu of the iOS device, as shown below.



Note: Do not use the fitness watch in the water with temperatures above 42°C. For any repairs please take the fitness watch to the authorised service center.

<https://zebronics.com/pages/service-centres>

ISO 9001:2015 Certified Company
www.zebronics.com