

 ZEBRONICS

ZEB AMOLED Smart Watch
GEMINI



User Manual

www.zebronics.com

Dear Customer,

Thank you for purchasing **ZEB-GEMINI** Watch. Please read this user manual carefully before operation & save this user manual for further reference.

Disclaimer

- This product should not be used for medical purpose, though it may monitor the BP, SpO2, Heart rate.
- Use 5VDC 2A adapters only.
- Kindly approach Zebronics service centers for service or warranty. Please refer to the following link for service center details:

<https://zebronics.com/pages/warranty-policy>

Features

Unisex

Heart Rate, SpO2 & BP monitor

Steps / Calories / Distance

Sleep Monitor

Large Vibrant Colour Display

9 Built in Watch Faces

Call, SMS and third party app message notification

100+ Static Sport Modes

Weather Forecast

Brightness Adjustment

Ip67

Metal body

Call Function (via BT)

Supports Voice Assistant
2.5D Laminated Glass
Always On Display
Raise to Wake
Quick Access
Menstrual Tracking
Camera & Music Control
8 Menu UI
7 Days Data Storage
Always On Display
Low Power Mode
DND Mode
Notification Function
Find Device
Inbuilt Game

Specification

Support : iOS 9 & Above /
Android 5.0 & Above*

Vibration : Yes

Water Resistant : Ip67

Screen Size & Type : 3.6cm (1.43)
AMOLED Display

Bluetooth : v5.0 + v3.0

Control : Capacitive Touch
Screen, 2 buttons

Data Storage : 7 Days

Battery : 250mAh, Built-in
rechargeable

Standby Time : 25 days

Charge Time : 2 h

Strap : Silicone

Product Dimension

Core (W x D x H) : 4.6 x 1.2 cm

Strap (L x B)

Long strap : 12.2 x 2.2 cm

Short strap : 9.5 x 2.2 cm

Net Weight : 57g

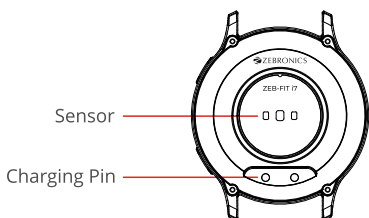
Package Contents

Smart Watch : 1 U

Charging Cable : 1 U

QR Code Guide : 1 U

Product Representation



Charging process

Use a 5V DC power adapter / charger to charge the **ZEB-GEMINI** (ZEB-FIT i7) smart watch with the charging cable provided inside the package. Kindly ensure to charge the device fully before using it for the first time. The fitness watch powers ON once plugged to the charger or it can be manually powered ON by pressing the button for few seconds.

Usage instructions:

1. Installing ZEB-FIT 20 SERIES app:

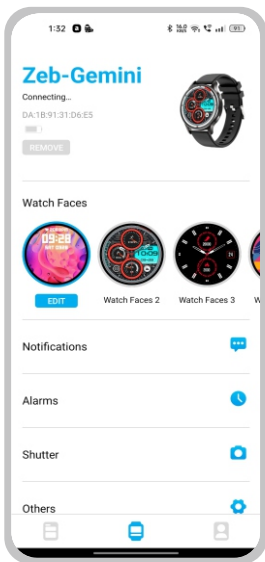
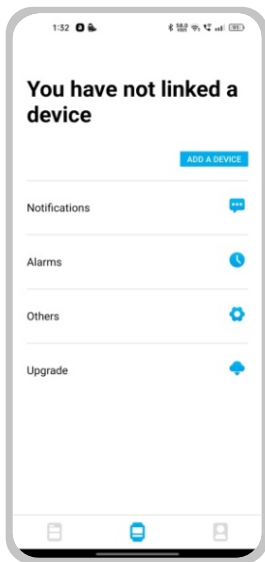
Download the app by scanning the QR code or search for the name ZEB-FIT 20 SERIES in the play store / app store. Once installed, follow the steps directed by the app interface.

Note: Your device must support Android 5.0 / iOS 9.0 (or above)

2. Connecting ZEB-GEMINI (ZEB-FIT i7) smart watch to the app:

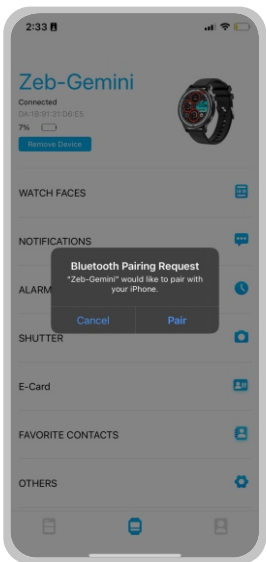
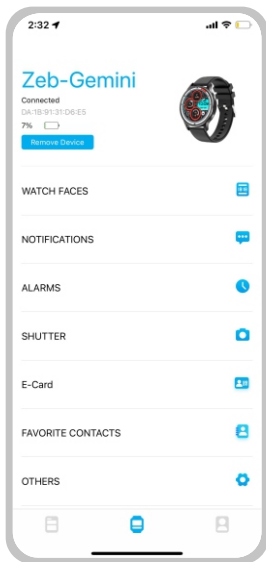
Click on 'Add device' option in the ZEB-FIT 20 SERIES app home page.

Use a 5V DC power adapter / charger to charge the Zeb-Gemini (ZEB-FIT i7) smart watch with the charging cable provided inside the package. Kindly ensure to charge the device fully before using it for the first time. The fitness watch powers ON once plugged to the charger or it can be manually powered ON by pressing the button for few seconds



Select the device name **ZEB-GEMINI** from the scanned name list.

While pairing, iOS devices display a BT pairing requested which must be given 'Pair' to confirm and proceed. Android devices get connected directly.



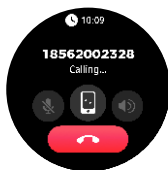
3. Call function (via BT) – connection and usage:

Enable the secondary BT from the watch settings BT: OFF > BT: ON

Now open your smart phone's BT menu and scan for nearby devices.

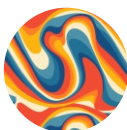
Connect to the device name **ZEB-GEMINI** (these steps apply for both Android and iOS smart phones)

Once connected, you can now use the watch dialler option and voice call function (via BT)



4. Display and interface of ZEB-GEMINI smart watch:

Once the device is powered ON and connected to the smart phone, the following are the display interface images which can be seen in **ZEB-GEMINI** smart watch.

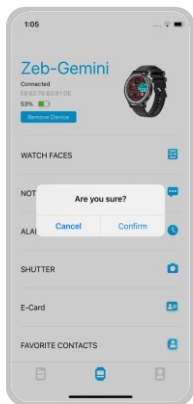


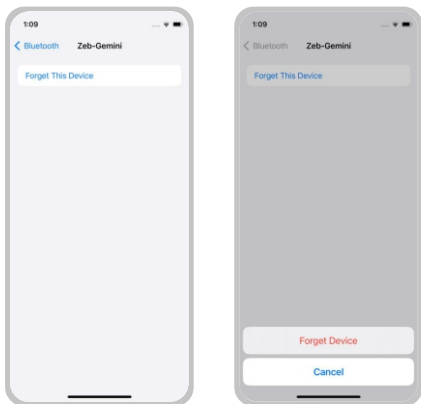


5. Disconnecting process:

For Android based smart phones, the fitness watch can be disconnected directly from the **ZEB-FIT 20 SERIES** app interface by simply clicking on the option as shown in the below image.

For iOS devices, once the above step is done, kindly ensure the fitness watch name is disconnected from the BT menu of the iOS device, as shown below.





Note: Do not use the fitness watch in the water with temperatures above 42°C. For any repairs please take the fitness watch to the authorised service center.

<https://zebronics.com/pages/service-centres>

ISO 9001:2015 Certified Company
www.zebronics.com