



Smart Watch With BT Calling

ZEB HYDRA



User Manual

www.zebronics.com

Dear Customer,

Thank you for purchasing **ZEB-HYDRA** Smart Watch. Please read this user manual carefully before operation & save this user manual for further reference.

Disclaimer

- This product should not be used for medical purpose, though it may monitor the BP, SpO2, Heart rate.
- Use 5VDC 2A adapters only.
- Kindly approach Zebronics service centers for service or warranty. Please refer to the following link for warranty policy details.

<https://zebronics.com/pages/warranty-policy>

***Note:** Do not use the fitness watch in the water with temperatures above 42°C. For any repairs please take the fitness watch to the authorised service center.*

<https://zebronics.com/pages/service-centres>

Features

Heart Rate, SpO2 & BP monitor

Step/Calorie/Distance

Sleep Monitor

3.6 cm Full Touch Display

10 Built-in watch face

Call, SMS and third party app message notification

Wrist sense

100+ Sport Modes

Weather forecast

Brightness Adjustment

Splash Proof

Menstrual Tracking
Call Function (via BT)
Supports Voice Assistant
7 Days Data Storage
Calculator
Quick Access
Meditative Breathing
Camera & Music Control
5 Menu UI

Specification

Support : iOS 10 & Above /
Android 5.0 & Above

Vibration : Yes

Water Resistant : Splash Proof

Screen Size & Type : 3.6cm (1.45)

Bluetooth : v5.3 + v3.0

Control : Capacitive Touch
Screen, Rotate Button
& 1 Button

Working Time : 5 Days

Battery : 300mAh, Built-in
rechargeable

Standby Time : 20 days

Charge Time : 3 h

Strap : Silicone

Product Dimension

Core (W x D x H) : 5 x 1.3 cm

Strap (L x B)

 Long strap : 12.2 x 2.2 cm

 Short strap : 9.1 x 2.2 cm

Net Weight : 63g

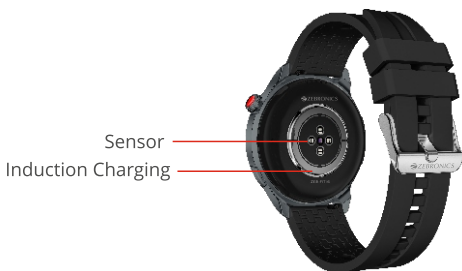
Package Contents

Smart Watch : 1 U

Charging Cable : 1 U

QR Code Guide : 1 U

Product Representation



Charging process

Use a 5V DC power adapter / charger to charge the **ZEB-HYDRA** smart watch with the charging cable provided inside the package. Kindly ensure to charge the device fully before using it for the first time. The fitness watch powers ON once placed on the charger or it can be manually powered ON by pressing the crown button for few seconds

Usage instructions:

1. Installing ZEB-FIT PLUS app:

Download the app by scanning the QR code found in the watch settings or search for the name **ZEB-FIT PLUS** in the play store / app store. Once installed, follow the steps directed by the app interface.

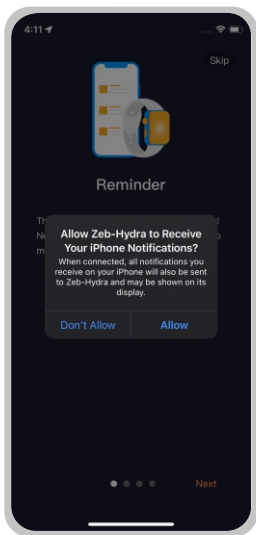
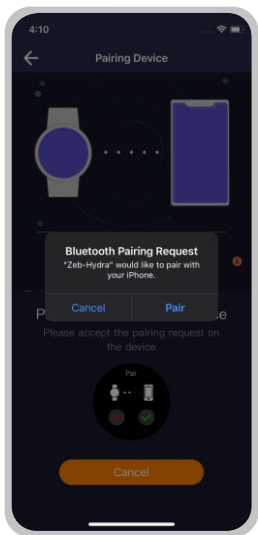
***Note:** Your device must support Android 5.0 / iOS 9.0 (or above)*

2. Connecting ZEB-HYDRA smart watch with the app:

- Click on 'Add device' option in the **ZEB-FIT PLUS** app home page



- Select the device name **ZEB-HYDRA** from the scanned name list.
- While pairing, an android devices, you need to confirm the pairing request shown in the watch .
- While pairing, iOS devices display a BT pairing requested and notification permission which must be given 'Pair/Allow' to confirm and proceed.



3. Call function (via BT) – connection and us

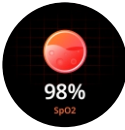
- The secondary BT request will be shown automatically as soon as the initial pairing is done on your mobile device.
- If the secondary BT is not connected automatically on your smart phone, then you can open your smart phone's BT menu and scan for nearby devices.
- Connect to the device name **ZEB-HYDRA** (these steps apply for both Android and iOS smart phones)
- Once connected, you can now use the watch dialer option and voice call function (via BT)

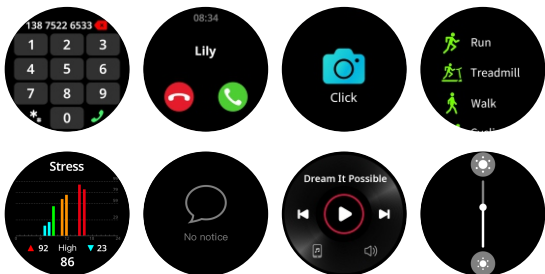
- You can also manually add contacts from your Smartphone by going to the “Phonebook” option on the **ZEB-FIT PLUS** app.



4. Display and interface of ZEB-HYDRA smart watch:

Once the device is powered ON and connected to the smart phone, the following are the display interface images which can be seen in **ZEB-HYDRA**





5. Disconnecting process:

- For Android based smart phones, the fitness watch can be disconnected directly from the ZEB-FIT PLUS app interface by simply clicking on Device Symbol > scroll to bottom > Click Unpair > confirm.

- For iOS devices, once the above step is done, kindly ensure the fitness watch name is disconnected from the BT menu of the iOS device.