

ZEBRONICS

Smart LED Projector
PixaPlay[®] 34



User Manual

www.zebronics.com

Dear Customer,

Thank you for purchasing the **ZEB-Pixaplay 34** Smart LED Projector. Please read the user manual carefully before usage & save it for future reference.

Note:

- *To provide a stable power supply, kindly use the cable provided with the product and connect to a AC 100-240V, 50/60Hz power source.*
- *Avoid the self-disassembly of the product as it results in voiding of the product's warranty.*
- *Avoid looking directly at the projector lens while it is active.*
- *Make sure that the projector's air vents are not blocked while in use. The device must be kept in a well ventilated surrounding for proper functioning.*
- *It is recommended to power OFF the projector after a continuous usage of 6 hours maximum.*
- *Place the projector away from water or other liquids. Avoid water accumulation and ensure good ventilation.*
- *In case of enquiry regarding the projector, email us at enquiry@zebronics.com or contact us at 044 4000 0004.*

Features :

- Home Theater Projectors for Movies, TV & Gaming etc..
- Projector comes with AUX OUT, USB & HDMI IN
- Built in Speaker
- Wide Compatibility
- Remote Control
- Miracast
- APP Support
- Quad Core Processor
- IOS Screen mirroring
- Advanced Sensor Tech (Auto Obstacle detection/ Auto Screen Fit / Auto Focus Technology /Auto Keystone Adaptation)
- Upto 508cm Screen Size
- Dual band Connectivity (2.4GHz & 5GHz)
- 30,000h lifelong LED lamp
- Smart Projector

Specification:

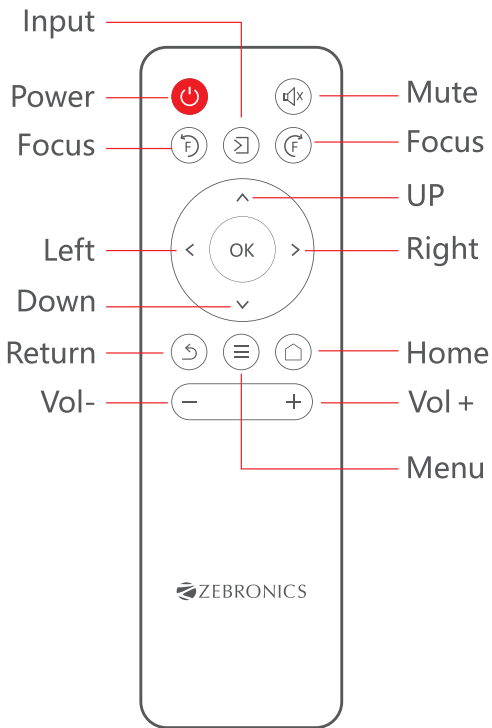
Model	: ZEB-SLP 5
Screen size	: 121.9-508 cm
Native Resolution	: 1280 x 720 HD
Max. Supported Resolution	: 1920 x 1080P (Max.)
RAM	: 1 GB
Core Processor	: Quad Core Processor
Storage (ROM)	: 8 GB
Android Version	: v12
Display Technology	: LCD with LED lamp

Wi-Fi Connectivity	: Dual band Connectivity (2.4GHz & 5GHz)
Bluetooth Version	: v5.1
Lifespan	: 30,000h
Brightness	: 5200 Lumens
Contrast ratio	: 1000:1
Projection Distance	: 1.2m - 5.7m
Port Interface	: USB x 1, HDMI x 1, AUX OUT
Video file format	: AVI, MP4, MKV, FLV, MOV, 3G2, MPG, VOB, SWF, TS
Input Voltage	: AC 100-240V, 50/60Hz
Product Dimension (W x D x H)	: 19 x 16 x 17.2 cm
Net. weight	: 1.1Kg

Package Contents:

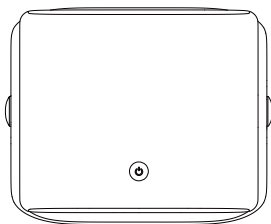
Projector	: 1 U
Remote Control	: 1 U
Power Cord	: 1 U
Cotton Swab Pack	: 1 U
HDMI Cable	: 1 U
QR Code Guide	: 1 U

Remote Control

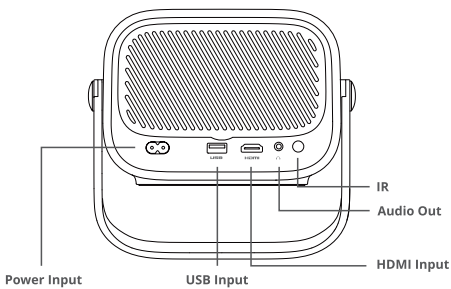


Note : To avoid the battery leakage and corrosion, if the remote will not be in use for a long time, kindly remove the batteries.

Remote Control :

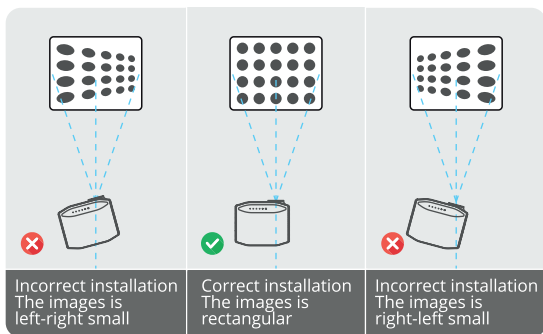


 **Power Button**



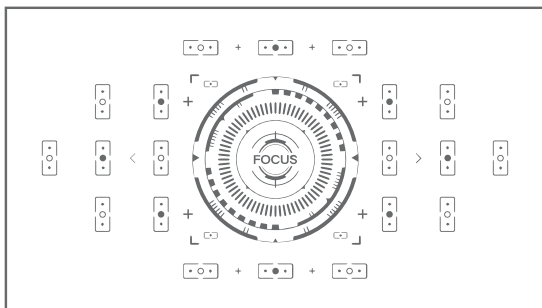
Setting Up the Projector :

1. Connect the power cord to the socket of the projector and turn it ON.
2. Before turning ON, make sure to place it in a flat surface for a proper projection then Press the power button / turn it on by using the remote.
3. Align the projector as shown in the image below to ensure proper projection.



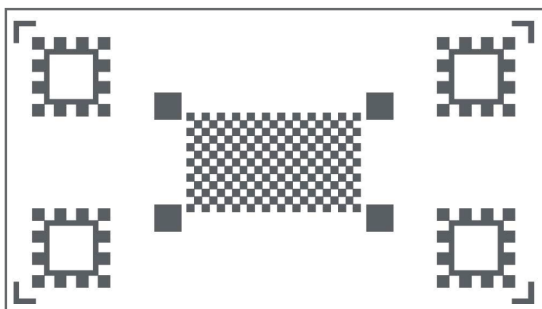
Auto Focus:

Auto focus feature allows the device to automatically adjust the lens to ensure a sharp image on the screen. This is particularly useful in settings where the projector might be moved or where the distance to the screen can vary.



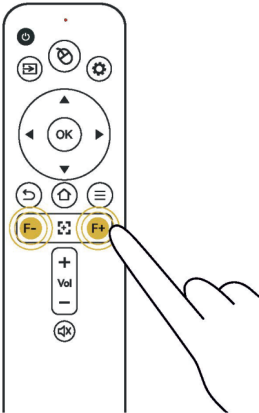
Auto Keystone:

Auto keystone correction feature automatically adjusts the image to ensure it appears rectangular, even if the projector is angled or not positioned directly in front of the screen. This is particularly helpful when the projector is set up on a table or mounted at an angle.

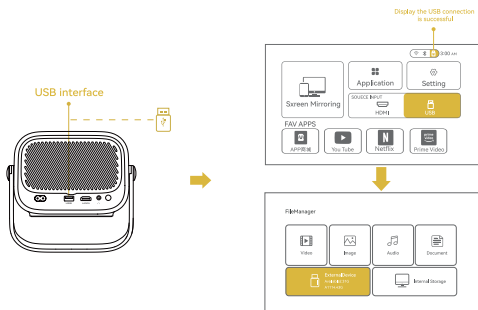


Electronic Focus:

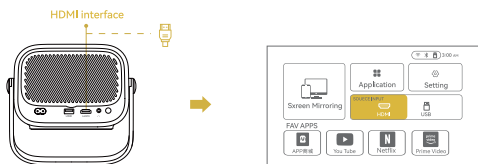
Press the " F- " " F+ " to adjust the Focus manually



USB Interface :



HDMI Interface :



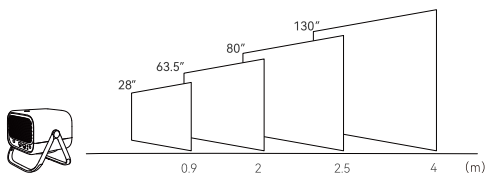
Settings

Open the homepage, select settings.

This settings houses the following submenus:
WiFi Setting, Bluetooth Setting, Projection Setting, System Update, Other Settings and About.



Projection Distance and Size:



Note: Due to optical device error of about 3%, the above data is for reference only, Please use actual measurement when installing the device.

ISO 9001:2015 Certified Company
www.zebronics.com