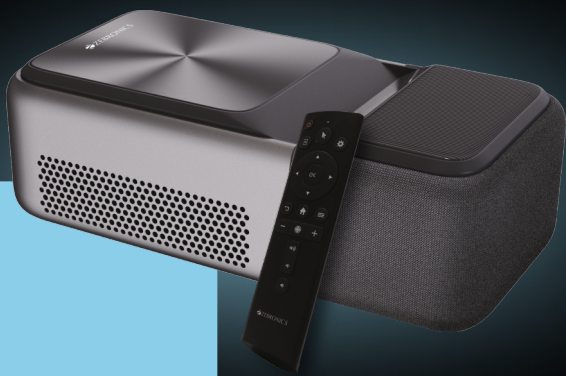




Ultra Short Throw Projector  
**PixaPlay<sup>®</sup> Pro 500**



**User Manual**

[www.zebronics.com](http://www.zebronics.com)

Dear Customer,

Thank you for purchasing the **ZEB-PixaPlay Pro 500 Ultra Short Throw Projector**. Please read the user manual carefully before usage & save it for future reference.

**Note:**

- *To provide a stable power supply, kindly use the adaptor provided with the product and connect to a AC 100-240V, 50/60Hz power source.*
- *Avoid the self-disassembly of the product as it results in voiding of the product's warranty.*
- *Avoid looking directly at the projector lens while it is active.*
- *Make sure that the projector's air vents are not blocked while in use. The device must be kept in a well ventilated surrounding for proper functioning.*
- *It is recommended to power OFF the projector after a continuous usage of 6 hours maximum.*
- *Place the projector away from water or other liquids. Avoid water accumulation and ensure good ventilation.*
- *In case of enquiry regarding the projector, email us at [enquiry@zebronics.com](mailto:enquiry@zebronics.com) or contact us at 044 4000 0004.*

## Features :

- Ultra Short Throw Projector
- Home Theatre Projectors for Movies, TV & Gaming etc..
- Built in Speaker
- Wide Compatibility
- Electronic Focus (via remote)
- Air Mouse
- Remote Control (BT + IR)
- Miracast
- IOS Screen Casting
- Dual Band Connectivity (2.4GHz & 5GHz)
- FHD 1080p (Native)
- APP Support

## Specification:

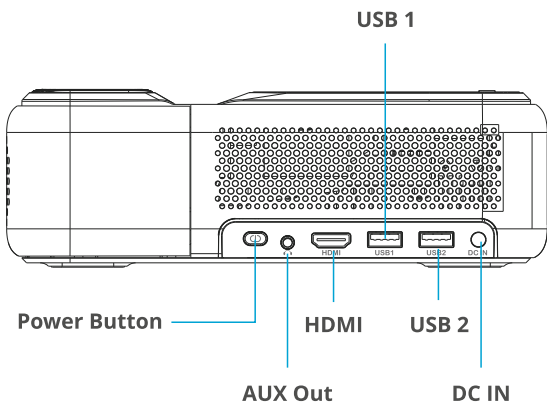
Screen size	: 76.2 - 228 cm
Native Resolution	: 1920 x 1080 FHD
Max. Supported Resolution	: 1080P (Max.)
Android Version	: 9
RAM	: 2 GB
Core Processor	: Quad Core Processors
Storage (ROM)	: 16 GB
Wi-Fi Connectivity	: Dual Band Connectivity (2.4 GHz & 5 GHz)
BT Version	: v5.0
Display Technology	: DLP
Lifespan	: 20,000h
Brightness	: 12500 lumens
Contrast Ratio	: 500:1

Projection Distance	: 0-40 cm
Port Interface	: USB x 2 / HDMI x 1 AUX OUT x 1
Video File Format	: H264, H265, MPEG2, MPEG4, VC1, VP6, VP8, VP9, MJPEG, AVS, AVS+, REAL8
Input Voltage	: DC 19V 3.7A
Product Dimension (W x D x H)	: 10.4 x 21 x 6.9 cm
Net. Weight	: 756 g

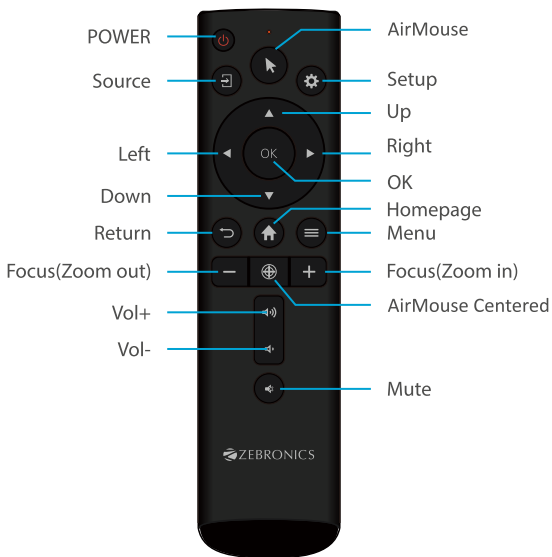
### **Package Contents:**

Projector	: 1 U
Remote Control	: 1 U
Adapter	: 1 U
HDMI Cable	: 1 U
Cleaning Cloth	: 1 U
QR Code Guide	: 1 U

# Product Description



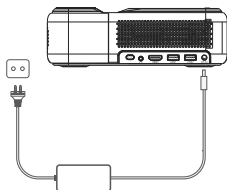
## Remote Control



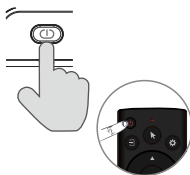
**Note :** To avoid the battery leakage and corrosion, if the remote will not be in use for a long time, kindly remove the batteries.

## Setting Up the Projector

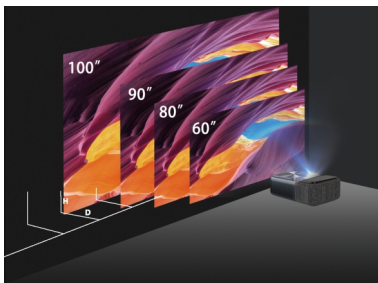
1. Connect the DC power adapter to the DC port of the projector and turn it ON.



2. Before turning ON, make sure to place it in a flat surface for a proper projection then press the power button / turn it on by using the remote.



## Projection Distance & Size:



Projection Size	30inch	60inch	80inch	90inch	100inch
Projection Distance	0cm	23cm	35cm	40cm	45cm

## Projection Settings :

There is no manual focus; the projector has only Electronic Focus & Keystone adjustment. If the projectors Auto focus still doesn't feel clear use the below options to set a desired Projection.

## Projection Modes :



1) Wall Projection

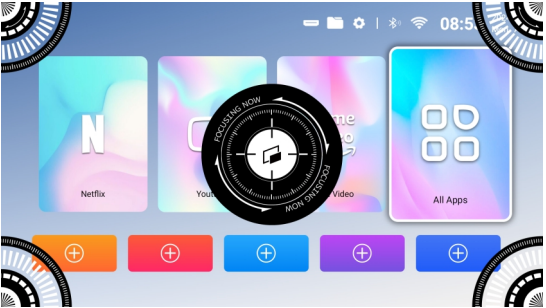


2) Table Projection



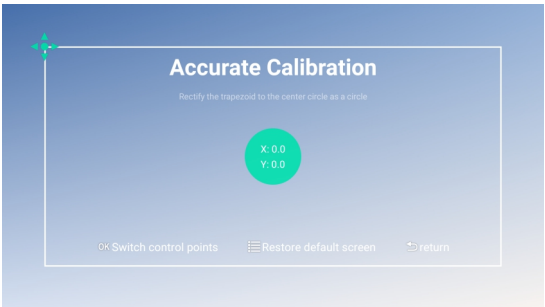
## Electronic Focus :

Press the +/- buttons on the remote control to adjust the picture clarity.



## Keystone Adjustment :

1. Go to Settings > Image Settings
2. Choose Keystone Correction
3. Press Direction Buttons to adjust the position, Press "OK" button to jump to the next corner adjustment.



## Digital Zoom :

1. Go to Settings > Image Settings
2. Choose Digital Zoom
3. Press Left button < to Zoom out (100%-50%) and Right button > to Zoom in (100%-50%)



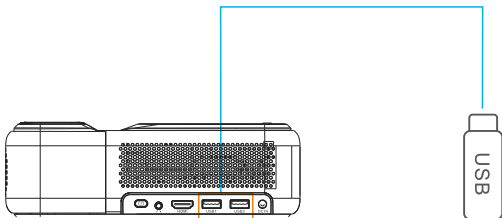
## BT Remote Pairing :

1. Go to Settings > BT > BT (ON) > Scan for device.
2. Hold the remote control near the projector, then press and hold the left and right arrow buttons until the indicator light flashes quickly. Screen shows 'BT\_Remote', choose this and press OK Button.
3. After being connected, the operation of the remote control will be more sensitive and the coverage will be wider



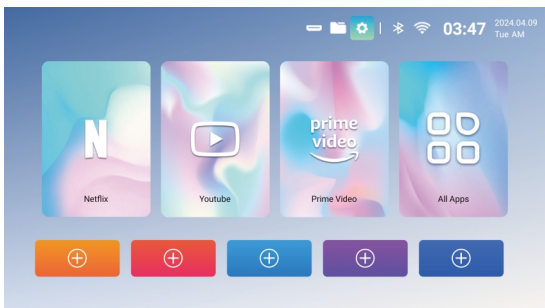
## USB Connection :

1. Connect a USB memory device to the USB port on the projector.



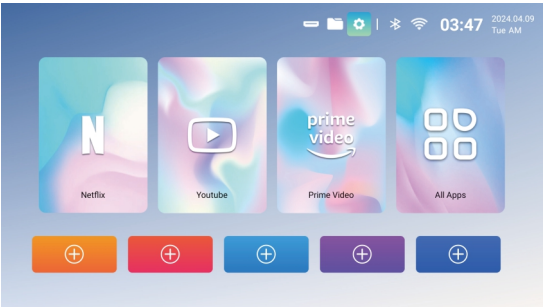
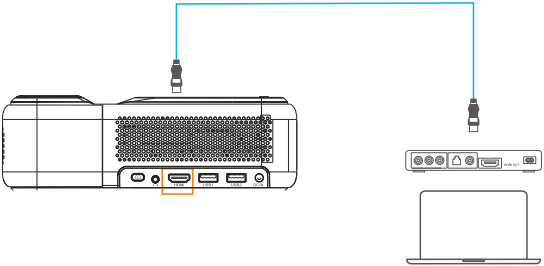
2. Choose the File icon in the top right corner to open the files in the USB device.

3. Select the file and play.



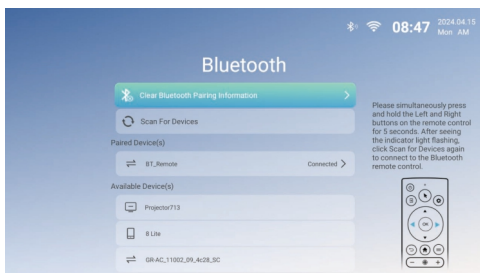
## HDMI Connection :

Connect the HDMI OUT on external devices like a DVD player or laptop to the HDMI IN port on the projector.



## BT Setting:

1. Go to Settings > BT
2. Turn the BT connection on and search for nearby BT devices
3. Choose correct BT device to connect.





## WIFI Setting:

1. Go to Settings > WIFI
2. Turn the WIFI ON and search the WIFI list by "Add WIFI"
3. Select your WIFI, then enter password to connect.



## Mouse Mode :

1. Press the  Button to enable the mouse mode.
2. Once enable you can move around the remote and make it work it as mouse
3. Press **OK** button to select the desired folder / application
4. Press  button to exit the folder / application
5. Press the below button to make the mouse appear at the center of the screen.

