



Smart Wi-Fi Plug  
ZEB **SP110**



**User Manual**

[www.zebronics.com](http://www.zebronics.com)

Thank you for purchasing **ZEB-SP110** smart plug. Please read this user manual carefully before operation & save this user manual for future reference.

## Specification

Input Voltage	: 100-240VAC
Frequency	: 50/60Hz
Output Voltage	: 100-240VAC
Maximum Output Current	: 10A
Maximum Power	: 2500W (Resistive)
Output Socket Type	: 3 pin Universal Socket 10A
Wireless Standard	: Wifi 2.4GHz 802.11b/g/n
Transmit Power	: 16dBm
Operating Temperature	: -20~50°C
Humidity	: ≤80%RH
Product Weight	: 70g
Product Dimension (D x H)	: 5.7 x 5.7 cm

## Product Overview



# Connectivity Instructions

Press and Hold the power button 5 sec to enter pairing mode

The Power button LED would start blinking in pairing mode



Smart Plug  
Connect power



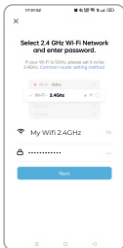
Phone connect  
toWiFi



Open APP



# Control

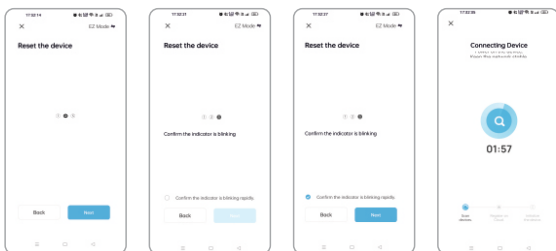


Step 1: Tap on Add Device.

Step 2: Tap on Socket (Wi-Fi).

Step 3: Choose your 2.4GHz Wi-Fi Network and enter the password.

Step 4: Make sure the smart plug is plugged into the wall socket and hold the power button until the indicator blinks fast.



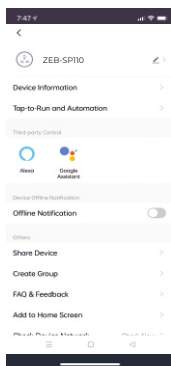
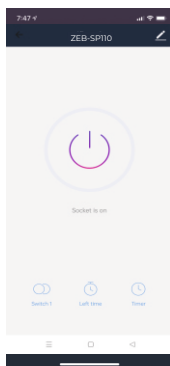
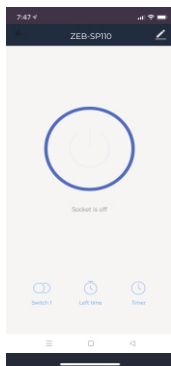
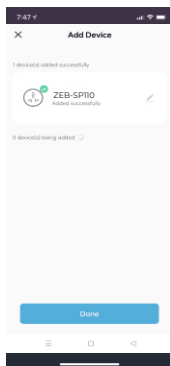
Step 5: Now tap on “confirm the indicator blinking rapidly” check box and click next

Step 6: Now wait for few moments and stay on the same screen for until the setup completes successfully.

Step 7: Tap on done and now you will be presented to the home screen of your smart plug.

Step 8: More settings and customization can be accessed at the top right pen icon.

## App Interface



To know more about Terms and conditions for warranty policy, please visit <https://zebronics.com/pages/warranty-policy>

ISO 9001:2015 Certified Company  
[www.zebronics.com](http://www.zebronics.com)