



Smart Wi-Fi Plug
ZEB **SPT116**



User Manual

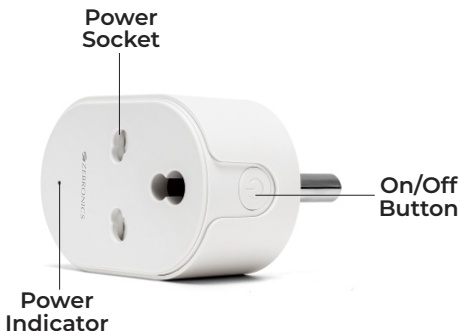
www.zebronics.com

Thank you for purchasing **ZEB-SP116** smart plug. Please read this user manual carefully before operation & save this user manual for future reference.

Specification

| | |
|----------------------------------|---------------------------|
| Input Voltage | : 100-240VAC |
| Frequency | : 50/60Hz |
| Output Voltage | : 100-240VAC |
| Maximum Output Current | : 16A |
| Maximum Power | : 4000W (Resistive) |
| Output Socket Type | : Universal 3 pin 16A |
| Wireless Standard | : Wifi 2.4GHz 802.11b/g/n |
| Transmit Power | : 16dBm |
| Operating Temperature | : -20~50 |
| Humidity | : ≤80%RH |
| Product Weight | : 120g |
| Product Dimension (W x D x H) | : 8.3 x 5.2 x 6.4 cm |

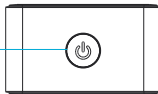
Product Overview



Connectivity Instructions

Press and Hold the power button 5 sec to enter paring mode

The Power button LED would start blinking in paring mode



Smart Plug
Connect power



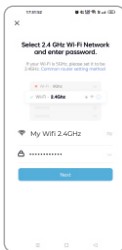
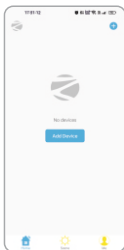
Phone connect
toWiFi



Open APP



Control

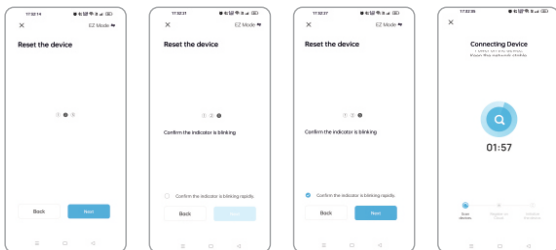


Step 1: Tap on Add Device.

Step 2: Tap on Socket (Wi-Fi).

Step 3: Choose your 2.4GHz Wi-Fi Network and enter the password.

Step 4: Make sure the smart plug is plugged into the wall socket and hold the power button until the indicator blinks fast.



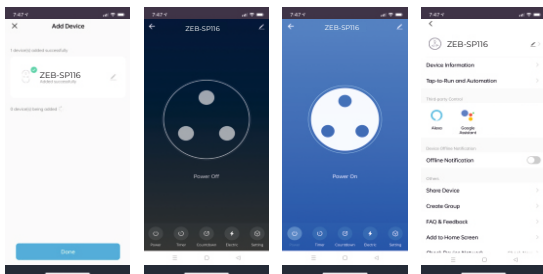
Step 5: Now tap on “confirm the indicator blinking rapidly” check box and click next

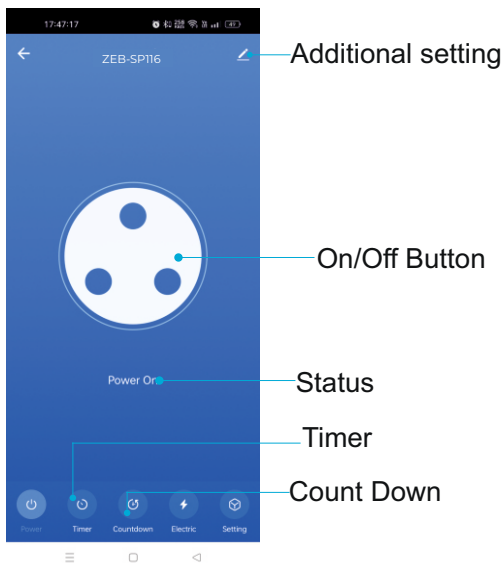
Step 6: Now wait for few moments and stay on the same screen for until the setup completes successfully.

Step 7: Tap on done and now you will be presented to the home screen of your smart plug.

Step 8: More settings and customization can be accessed at the top right pen icon.

App Interface





To know more about Terms and conditions for warranty policy, please visit <https://zebronics.com/pages/warranty-policy>

ISO 9001:2015 Certified Company
www.zebronics.com