



— Tire Inflator —  
ZEB **17TI4**



# User Manual

[www.zebronics.com](http://www.zebronics.com)

## **Dear Customer,**

Thank you for purchasing the **ZEB-17TI4** Tire inflator. Please read this user manual carefully before operation and save this user manual for further reference.

### **Note:**

- For better performance of the tire inflator, it is recommended to allow the tire inflator to cool down after continuous usage of every 8 to 10 mins.
- The preset tire pressure is based on the average tire pressure of cars world wide - However the tire pressure requirement for your car may vary from the tire pressure preset - so it is recommended to change the value of the tire pressure for inflation based on your car tire.
- Always ensure the inflator is connected properly to the power source, and please use the accessories provided with the tire inflator for better performance. In case of any cable damage, please visit the service center.
- Ensure the inflator is placed on a stable, dry, and non-combustible surface while operating. Avoid placing the inflator in areas with high moisture or near flammable materials
- Check the tire inflator and all connections for damage or wear before use. Do not operate if damaged.

- The tire inflator may become hot during use. Avoid touching the nozzle or any part of the device that may have heated up.
- The inflator has ventilation openings for effective heat management. Ensure these vents are not obstructed by any objects, fabric, or debris while in use.
- Please charge the tire inflator until full and remove the charging source as soon as the battery indication is full. Prolonged time charging can damage the battery and shorten its lifespan.

### **Features:**

- Cord-Free Functionality
- Powerful Motor
- Multiple Nozzles
- Type-C Charging
- 4 Preset Pressure Modes
- Flashlight with SOS Mode
- Power Bank Function
- Individual Set Pressure and Current Pressure Indicator

### **Specifications:**

Motor Input Voltage	: DC 7.4V
Motor RPM	: 18500 RPM
No of Preset Pressure Modes	
Modes	: Bike/ Car/ Bicycle/ Sports ball

No of Pressure

Measurement Units : Psi/ KPa/ Bar/ kg/cm<sup>2</sup>

Charging Time : 3-4 Hours

Charging Cable Length : 0.3 Mtr

Product dimension : 6.6 x 5.0 x 13.4 cm  
(W x D x H)

Net Weight : 0.42 kg

Country of origin : PRC

**Package Contents :**

Air Inflator : 1U

Air Hose : 1U

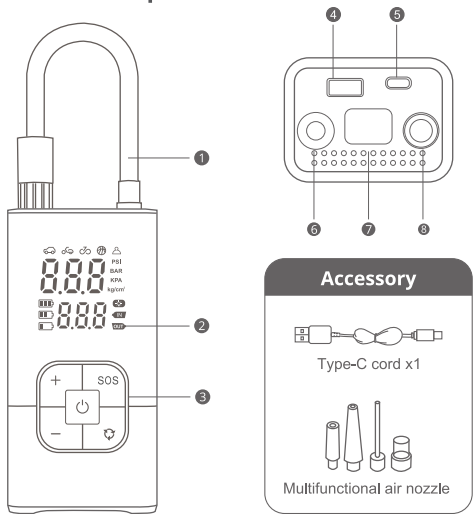
Air Pump Nozzle attachments : 1 Set

Charging Cable : 1U

QR Code Guide : 1U



## Product Description:



1. Air hose
2. Digital display
3. Operation buttons
4. USB Output
5. Type-C input
6. Air hose storage port
7. LED light
8. Air hose port

## Tire Inflator Instructions:

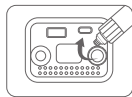
1. **Prepare the Tire Inflator:**
  - **Charge of the Inflator:** Before starting, make sure the tire inflator is fully charged or

charged or has sufficient charge for the usage.

## 2. Attach the Inflation Hose:

- **Hose Connection:**

The air hose provided with the tire inflator has male screw mount at one end and female screw nozzle at the other end. Connect the Air hose (Male screw) to the tire inflator by screwing the air hose.



- **Connect the Hose to the Tire Valve:**

Now screw the female screw nozzle to the tire by placing the tire nozzle and ensure there are no air leakages.



## 3. Set the Desired Pressure:

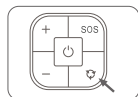
- **Turn On the Tire Inflator:**

Press the Power Button to power On the tire inflator.



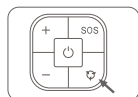
- **Select Preset Mode:**

Single press the Mode selection button to choose the suitable preset mode



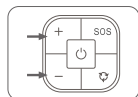
- **Selecting the Unit of Pressure:**

Press the Mode selection button for 2 to 3 sec to switch the pressure unit from bar, psi, kpa, kg/cm<sup>2</sup>.



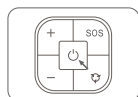
- **Adjust Tire Pressure:**

After selecting the desired mode, the tire pressure can be increased or reduced by pressing the "+" or "-" respectively.



- **Inflating the tire:**

Single press the Power button to run the tire inflator - after reaching the desired pressure, the tire inflator will automatically stop the tire Inflation.



#### 4. **Disconnect the Inflation Hose:**

- **Turn Off the Inflator:**

Once the tire has been inflated to the correct pressure, long press the Power Button again to turn off the tire inflator.

- **Release the Hose from the Valve:**

Carefully disconnect the hose from the tire valve.

#### **Note:**

- Before inflating the tire, please make sure the nozzle of the tire is closer to the ground so that the tire inflator is not hanging from the tire while inflating.
- For better performance of the tire inflator, it is recommended to allow the tire inflator to cool down after continuous usage of every 8 to 10 mins.

## **Power bank Mode:**

### **1. Locate the USB Output Port:**

On your tire inflator, the USB Output Port is located at the bottom side of the unit.

### **2. Connect Your Device:**

Use the appropriate USB cable for your device (such as Lightning for Apple devices or micro-USB/USB-C for Android devices). Plug the USB end of the cable into the USB Output Port on the tire inflator and the other end into your device.

### **3. Device Charging:**

Your device should begin charging right away.

## **Note:**

- Kindly note the charging feature of this tire inflator is for the emergency charging for smart phones. Please ensure the tire inflator has sufficient power for inflating tires in time of need.
- Please ensure to not charge the mobiles when the tire inflation is in progress.

## **Charging Instructions:**

- Please connect the type-C connector of the accessory charging cable to the tire inflator and the USB end of the charging cable to the DC 5V adapter.

## **Flash Light / SOS Mode:**

1. To power On the flashlight, first turn on the Tire inflator, single press the SOS Button on the tire inflator. The light will turn on, providing illumination for your work area.
2. On the next single short press, the Slow Blinker function - RED LED Light Blinking will function.
3. On the third single short press, the Fast Blinker function - RED LED Light Fast Blinking will function.
4. To turn off the flashlight, press the SOS Button again.

## **Note:**

- The Flash light function control will work in series - Flash light - Slow blinker - Fast blinker - Flashlight off.

## **Storing the Tire Inflator After Usage:**

- **Store the Hose Properly:** Coil the inflation hose neatly to avoid tangling or damaging the hose. Ensure that there are no sharp bends.
- **Store in a Cool, Dry Place:** Store the tire inflator in a dry, cool location. Avoid leaving it in extreme temperatures (like inside a car on hot days).
- **Charge the Inflator:** If you used the battery-powered mode, recharge the unit after use to ensure it's ready for the next time.

ISO 9001:2015 Certified Company  
[www.zebronics.com](http://www.zebronics.com)

