

 ZEBRONICS

Beard Shaver
ZEB **SHAVERS**



User Manual

www.zebronics.com

Thank you for purchasing **ZEB-SHAVER S** Beard Shaver. Please read the user manual carefully before usage & save it for future reference.

Note:

- ◆ Use this product only for its intended use.
- ◆ Do not dismantle the trimmer in order to avoid electrical shock & other accidents and this may lead to void of warranty.
- ◆ Keep the product and cords away from high temperature and high humidity places.
- ◆ Avoid using and charging the product with wet hands.
- ◆ Do not throw the product into fire.

Features:

- ◆ Upto 140 mins Cordless use
- ◆ Rounded tip blade
- ◆ Stainless steel blades
- ◆ 4 Guides combs (1 to 6 mm)
- ◆ Ergonomic design
- ◆ Built in Rechargeable battery
- ◆ 90 mins USB Fast Charge
- ◆ Contour Glide

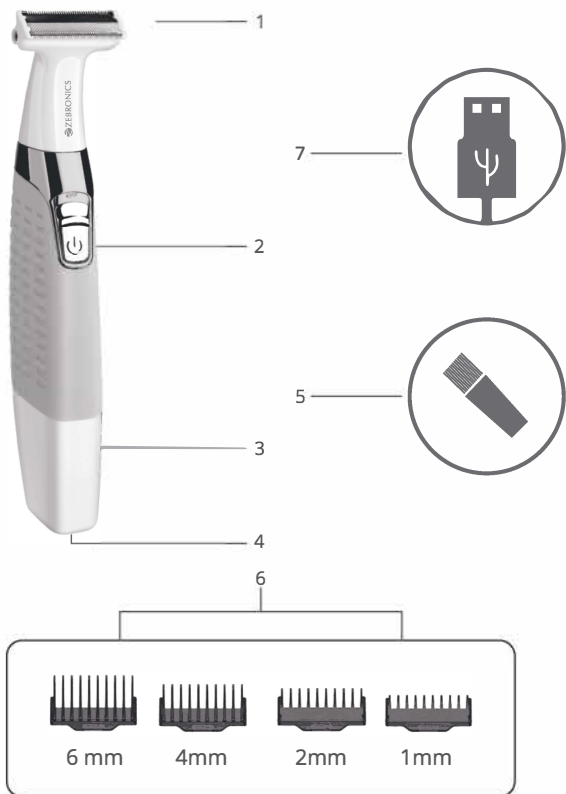
Specification :

Input Voltage	: DC 5V
Usage Type	: Corded & Cordless
Trimmer	
Body Material	: ABS
Trimming Range	: 0.5mm - 6mm
No of Clips	
Attachments	: 4nos (1mm, 2mm, 4mm, 6 mm)
Blade Material	: Stainless steel
Charging Time	: Upto 90mins
Run Time	: Upto 140mins
Power Consumption	: 5W
Product Dimension (W x D x H)	: 3.7 x 4 x 16.3 in cm
Net Weight	: 104 g

Package content :

shaver	: 1 U
Charging cable	: 1 U
Cleaning Brush	: 1 U
Clip(1 mm, 2 mm, 4mm, 6mm)	:4U
QR Code Guide	:1 U

Product Description :

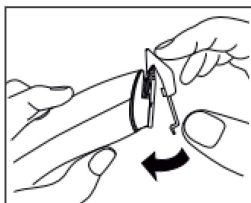


- 1.Shaver Head
- 2.Power Button
- 3.LED Indicator
- 4.Charging Port

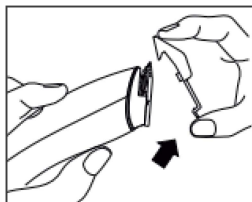
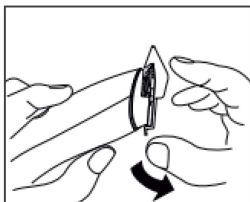
- 5.Cleaning Brush
- 6.Guide Combs (1mm, 2mm, 4mm, 6 mm)
- 7.Charging Cable

Usage Instructions:

1. Fully charge the Shaver before every usage for better performance.
2. Please Add or remove the guide combs as per the levels of trimming needed.
3. Press the power button to switch the Shaver On/Off.



Attaching The Clips



Removing The Clips

Cleaning the Trimmer After Usage:

1. Use the brush to clean the hair from the Shaver head.
2. Avoid the usage of water and other cleaning liquid or solvents for cleaning the Shaver.

Charging Instruction:

- The shaver can be charged with the charging cable that is provided with the product.
- Connect the USB connector of the charging cable to the USB port of the DC 5V charging adapter
- Connect the Type-C end of the charging cable should be connected to the Type-C charging port of the shaver.
- The LED indicator blinking indicated the charging of the product.
- Upon full charge, the LED indicator glows constantly.

ISO 9001:2015 Certified Company
www.zebtronics.com

