

 ZEBRONICS

9 In 1 Multi Grooming Kit

ZEB **HT205**

**UNLEASH
THE
BOLD**



User Manual

www.zebronics.com

Dear Customer,

Thank you for purchasing the **ZEB-HT205 Trimmer**. Please read the user manual carefully before usage & save it for future reference.

Note:

- *Use this product only for its intended use.*
- *Do not dismantle the trimmer in order to avoid electrical shock & other accidents and this may lead to devoid of warranty.*
- *Keep the product and cords away from high temperature and high humidity places.*
- *Avoid using and charging the product with wet hands.*
- *Do not throw the product into fire.*

Features:

- Upto 120 mins Cordless use
- Corded & Cordless usage
- 6 Guides combs (1-12mm)
- Washable Blades & Attachments
- Self Sharpening Stainless steelblades
- LED Indicator
- Easy to hold design
- Type-C Charging
- Built in Rechargeable battery
- Sleek design

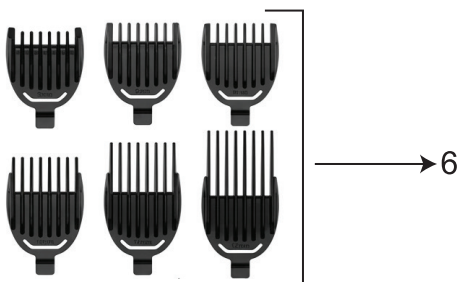
Specifications:

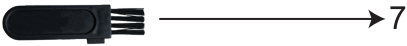
Input Voltage	: DC 5V
Usage type	: Corded & Cordless
Trimmer Body Material	: ABS Plastic
Trimming Range	: 1mm - 12mm
No of Clips Attachments	: 6nos.(1mm,2mm, 3mm, 6mm,9mm & 12mm)
Styling tools	: Precise Trimmer, Nose Trimmer, Body Trimmer
Blade material	: Stainless Steel
Charging time	: Upto 180mins
Run time	: Upto 120mins
Power consumption	: 5W
Product Dimension (W x D x H)	: 15.3 x 4 x 3.5 cm
Net Weight	: 120g

Package Content:

- Trimmer : 1 U
- Charging Cable : 1 U
- Cleaning Brush : 1 U
- Additional heads : 2 U
- 6 Guides combs (1mm,
2mm, 3mm, 6mm,
9mm & 12mm) : 6 U
- Oil : 1 U
- Qr code guide : 1 U

Product Representation :



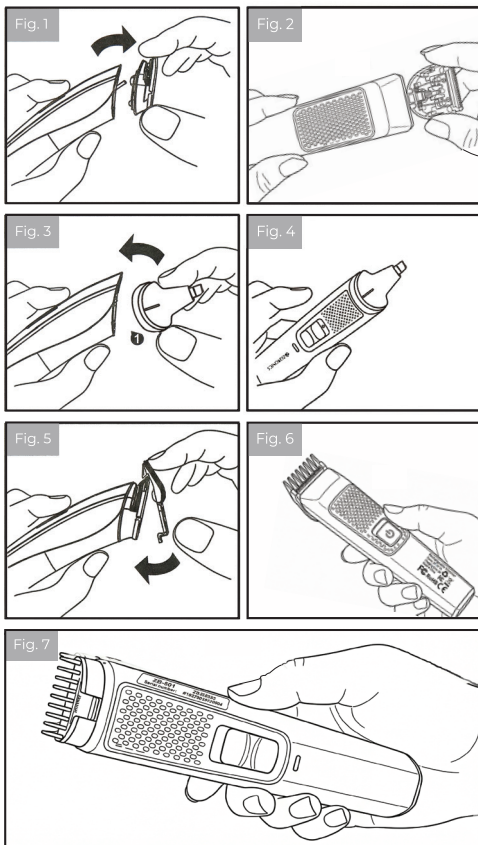


1. Trimmer Head
2. Power On/Off Slide Switch
3. LED Indicator
4. Precision Trimmer Head
5. Nose Trimmer Head
6. Guide Combs
7. Cleaning Brush
8. Charging cable
9. Oil

Changing the Trimmer heads:

1. To change the trimmer head, first switch the trimmer off and Place the thumb finger at the base of the head and use your index finger to pull out the head from the socket. (Refer Fig1, Fig2)

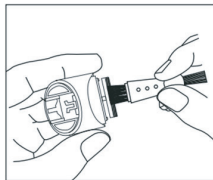
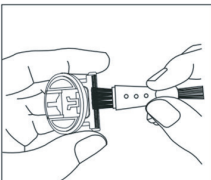
2. Now place the trimmer head that you want to use on the trimmer base and gently press on the head to fix it perfectly. (Refer Fig3, Fig4)



3. To add the trimmer clip, place the trimmer clip on the trimmer head and gently press the base of the clip to the base of the trimmer head. (Refer Fig 5)
4. Now switch On the trimmer by pressing the On/ Off switch of the trimmer.
5. This is common for all the trimmer heads
Refer the above figures.

Cleaning the Trimmer after Usage:

1. Kindly remove the trimmer head from the socket.
2. Use the brush to remove the hairs from the blades of the trimmer head.
3. Also, clean the head socket of the base with the brush to clean the hair particles.
4. Avoid the usage of the water or other cleaning liquid / solvents for cleaning the trimmer.



Charging Instruction:

The trimmer can be charged with the charging cable that comes with the product. Connect the USB connector of the charging cable to the USB port of a DC5V charger and the other end to the trimmer. The red light below the On/Off switch indicated that the trimmer is charging and once fully charged the colour turns green.

