



4.1 Speaker  
**JELLYFISH***Pro*



## User Manual

[www.zebronics.com](http://www.zebronics.com)

Dear Customer,

Thank you for purchasing the **ZEB-JELLYFISH PRO** 4.1 Speaker. Please read the user manual carefully before usage & save it for future reference.

### **Note:**

- Avoid the usage of this speaker at the high temperature and high humidity environment.
- Avoid the self-disassembly of the product as it results in voiding the Product's Warranty.
- Please turn off the power and pull out the plug, when the speaker is not in use.

### **Features**

4.1 channel speaker

BT v 5.0 / USB / SD / AUX / FM

LED Display

LED lights With RGB Illumination

13.33 cm subwoofer

Remote control

Glossy Finish

### **Specifications**

Output power (RMS)

Subwoofer : 36W

Satellite : 16W x 4

Total : 100W

Driver size

Subwoofer : 13.33 cm

Satellite : 7.62 cm x 4

## Impedance

Subwoofer : 4Ω

Satellite : 4Ω

Frequency response : 40Hz - 20kHz

S/N Ratio : ≥72dB

Separation : ≥45dB

## File format

support (USB/SD) : MP3

Line input : 2ch RCA

## Max supported

memory size (USB/SD) : 32GB

FM frequency range : 87 MHz-108 Mhz

BT name : ZEB-JELLYFISH PRO

BT version : 5.0

## Product dimension (W x D x H)

Subwoofer : 17.5 x 30.1 x 27.5 cm

Satellite : 11.6 x 10.5 x 16.8 cm

## Net. weight

Subwoofer : 3.32 Kg

Satellite : 470 g x 4

Total : 5.2 Kg

## Package Content

Subwoofer : 1 U

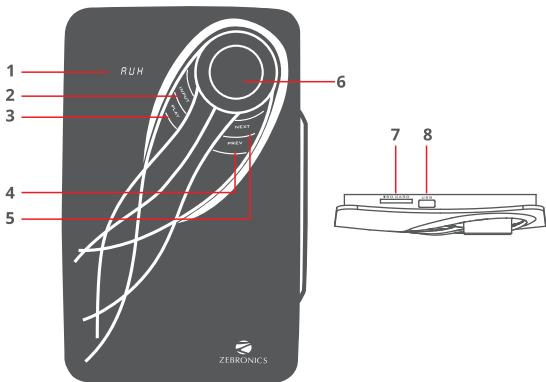
Satellite : 4 U

Remote : 1 U

Input cable : 1 U

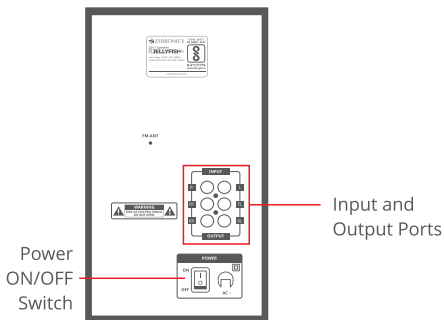
QR Code Guide : 1 U

## Control Description

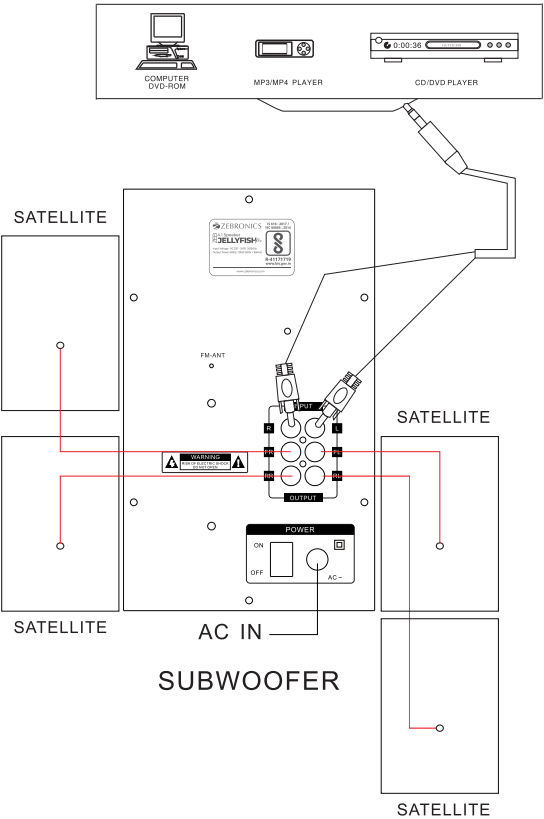


1. LED DISPLAY
2. INPUT MODE
3. PLAY / PAUSE / SCAN
4. PREV / VOLUME- / FM CHANNEL-
5. NEXT / VOLUME+ / FM CHANNEL+
6. VOLUME CONTROL
7. SD CARD SLOT
8. USB PORT

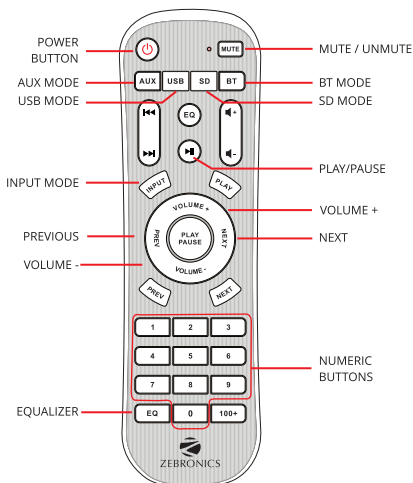
## Back Panel



# Satellite / Input and Output Connection



## Remote Control



**Power** : standby ON/OFF

**Numeric Pad( 0-9)** : To select direct tracks from SD Card / USB drive and to select two digits and above, by consecutively pressing

**Vol+** : To increase the volume

**Prev** : To select the previous tracks in BT/USB/SD or channels in FM mode

**Vol-** : To decrease the volume

**100+** : To select tracks when more than 100 tracks present in USB / SD Card

**Scan** : To scan all FM channels available

**Input Mode** : Mode Selection (BT/AUX/USB/SD/FM)

**EQ** : Equalizer

**Play/Pause** To Play / Pause for current track

**Next** : To select the next tracks in BT/USB/SD or channels in FM mode

**Mute** : To Mute / Unmute for currently playing track

**AUX/USB/SD/BT** : Dedicated Hotkeys for directly switching to AUX Mode / USB Mode / SD Mode / BT Mode

## Instructions for Use:

### Button functions

1. Press the **"Input"** button to change the input mode (BT/USB/SD/FM/AUX) of the speaker.
2. Short press the **"Next/Prev"** button to change the Prev/ Next track or channel when in BT/USB/SD mode or FM mode respectively.
3. Long press the **"Next/Prev"** button to increase/decrease the speaker volume.
4. Short press the **"PLAY"** button to Play/Pause the track being played or Mute/Unmute when in BT/USB/SD mode or FM/AUX mode respectively.
5. Press and Hold the **"PLAY"** button to Scan for the available FM channels.

## General Instructions

### BT Mode:

Power ON the speaker, press **"Mode"** button to switch to BT Mode. Switch ON BT on your phone or tablet and search for nearby BT devices, Search for the BT name **"ZEB-JELLYFISH PRO"** and tap to connect it.

### USB/SD Mode:

The speaker automatically switches to USB/SD input mode with the LED display when a USB flash drive/SD Card is inserted (this mode isn't selectable on the speaker or remote control unless a USB/SD flash drive is connected).

### **FM radio:**

Switch the speaker to FM mode. In FM mode, long press the **PLAY** button in the subwoofer control panel or remote to scan for the available FM channels. Once the scanning is done, the scanned channels will begin to play.

### **AUX-IN:**

Switch the speaker to AUX mode. The speaker can be connected to an audio device using an RCA to 3.5mm. Connect the one end of the cable to the speaker and the other end to an audio source. The songs from the audio source can be heard through the speaker.

