



ZEBRONICS
ALWAYS AHEAD

5.1 Speaker

ZEB **SPARK100**



User Manual

www.zebronics.com

Dear Customer,

Thank you for purchasing ZEB-SPARK 100 5.1 Speaker. Please read the user manual carefully before usage & save it for future reference.

Note:

- Avoid the usage of this product at the high temperature and high humidity environment.
- Avoid the self-disassembly of the products or it results in the voiding the product's Warranty.
- Turn off the speaker when the speaker is not in use.
- To know more about Terms and conditions for warranty policy, please visit:

<https://zebronics.com/pages/warranty-policy>

Features

5.1 Channel speaker

Wireless BT/USB/FM/AUX

LED display

Remote control

13.33cm Subwoofer

RGB Lights

Specification

Output Power (RMS)

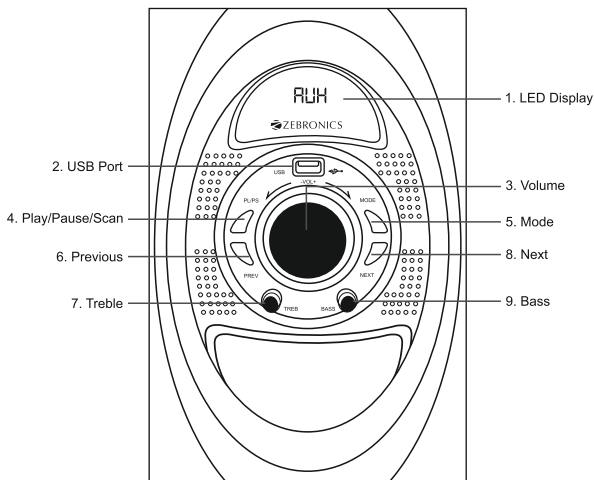
Subwoofer	: 50 Watts
Satellite	: 10 Watts x 5
Total	: 100 Watts

Driver size		
Subwoofer	:	13.33cm x 1
Satellite	:	7.62cm x 5
Impedance		
Subwoofer	:	4Ω
Satellite	:	8Ω
Frequency response	:	20Hz - 20kHz
S/N Ratio	:	≥72dB
Separation	:	≥45dB
File format support (USB):		Mp3
Line input	:	2ch RCA
Max. supported USB memory size	:	64GB
FM frequency range	:	87.5 MHz - 108 MHz
BT name	:	ZEB-SPARK 100 5.1
BT version	:	v5.1
Product dimension (W x D x H)		
Subwoofer	:	18 x 33.4 x 26.5 cm
Satellite	:	10.5 x 8.5 x 18 cm
Net. weight		
Subwoofer	:	4.25kg
Satellites	:	335g x 5
Total	:	5.92kg

Package contents

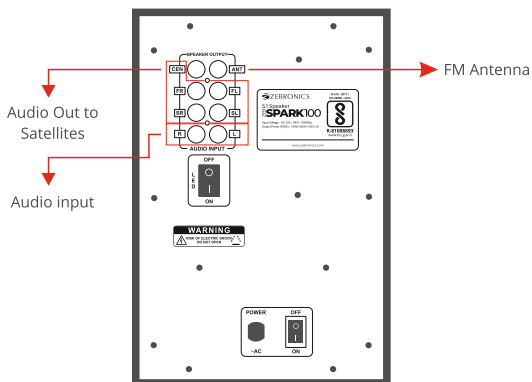
Subwoofer	:	1 U
Satellite	:	5 U
Remote control	:	1 U
FM Cable	:	1 U
Input cable	:	1 U
QR Code guide	:	1 U

Description of the Subwoofer front control panel:

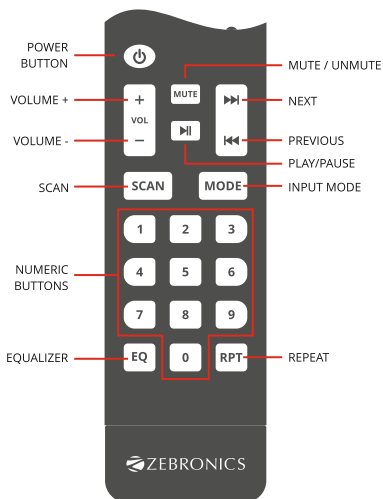


1. LED Display, 2. USB Port, 3. Volume control
4. Play/Pause/Scan, 5. Mode, 6. Previous
7. Treble control, 8. Next, 9. Bass control

Description of the Subwoofer back control panel:



Remote Control



Power : standby ON/OFF

Numeric Pad (0-9) : To select particular track from USB drive directly or to enter FM Channel frequency directly

Vol+ : To increase the volume

Prev : To select the previous tracks in BT/USB or to Tune in FM mode

Vol- : To decrease the volume

RPT : To Switch between available repeat modes

Scan : To scan all FM channels available

Mode : Mode Selection (BT/AUX/USB/FM)

EQ : Short press to use Equalizer (Nor, roc, pop, Jaz, CLA, Cut)

Play/Pause To Play / Pause the current track. To switch next channel in FM mode

Next : To select the next tracks in BT/USB or to Tune in FM mode

Mute To Mute / Unmute

General instruction

BT Mode:

Switch the speaker to BT mode, Scan for nearby BT devices in your device. Tap on ZEB-SPARK 100 5.1 to connect.

USB Mode:

Insert the USB drive to the speaker. The speaker will detect the USB and the audio files from drive will be played automatically.

FM radio:

Switch the speaker to FM mode. In FM mode, long press the play button to scan for the available FM channels. Once the scanning is done, the first scanned channels will begin to play. The next button or previous button can be used to change the FM channels

AUX-IN:

The speaker can be connected to an audio device using an RCA to 3.5mm cable. Connect the one end of the cable to the speaker and the other end to an audio source. The songs from the audio source can be heard through the speaker

ISO 9001:2015 Certified Company

www.zebronics.com

