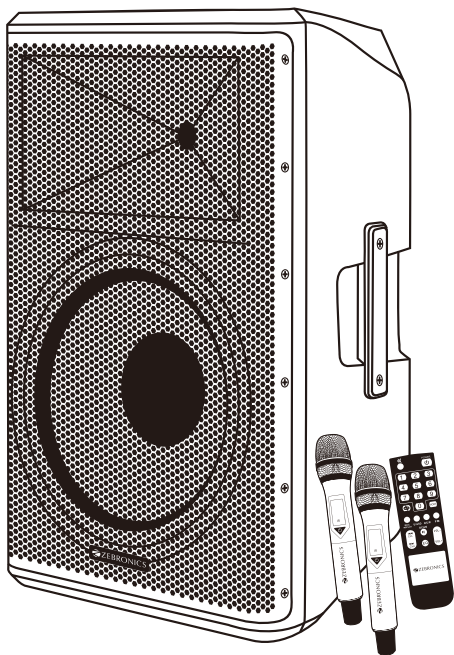


ZEBRONICS

DJ Speaker
NEB EPIC



User Manual

www.zebronic.com

Thank you for purchasing **ZEB-EPIC** DJ Speaker. Please read this user manual carefully before operation & save it for future reference.

Note:

- *Avoid the usage of this product at the high temperature and high humidity environment.*
- *Avoid the self-disassembly of the products or it results in the voiding the product's Warranty.*
- *Turn off the speaker when the speaker is not in use.*
- *To know more about Terms and conditions for warranty policy, please visit*

<https://zebronics.com/pages/warranty-policy>

Features:

- Wireless BT / USB / AUX / mSD / FM / MIC Input x 2 / Guitar IN x 2
- Recording Function
- LED Display
- 30.48cm Full Range Speaker
- 2 Way Speaker
- Remote Control
- Dual UHF Wireless MIC
- Volume, Bass & Treble Controls
- Karaoke
- Dedicated MIC Controls

Specification:

Output Power (RMS) : 300W

Driver Size

Full Range : 30.48cm

Tweeter : 7.62cm

Impedance

Full Range : 4Ω

Tweeter : 6Ω

Frequency Response : 80Hz-18kHz

S/N Ratio : ≥81dB

File Format Support : MP3, WMA, WAV
(USB/mSD)

Line Input : RCA, XLR

Max. Supported USB/mSD

Memory Size : 32GB

FM Frequency Range : 87.5 MHz - 108 MHz

BT Name : ZEB-EPIC

BT Version : v5.2

Product Dimension : 36.5 x 37 x 62 cm
(W x D x H)

Net. Weight : 16.35 Kg

Package Contents:

DJ Speaker : 1 U

Remote : 1 U

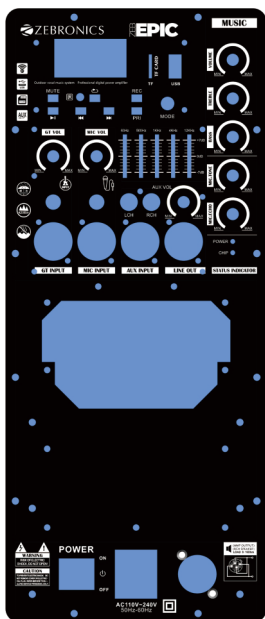
Wireless MIC : 2 U

QR Code Guide : 1 U

Input Cable : 1 U

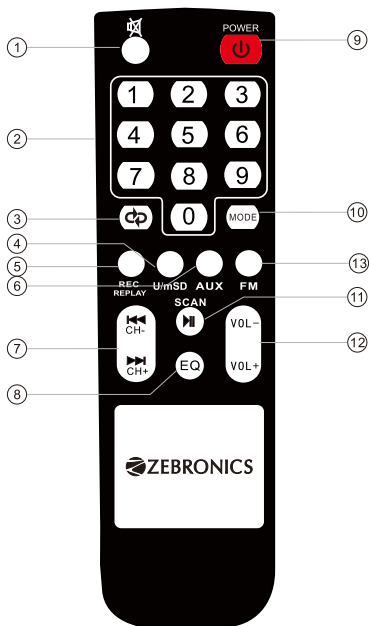
Power Cord : 1 U

Control Description



1. Mute Button
2. To Play/Pause a Track or Single Press to Scan in FM
3. IR Receiver
4. ⏮ Previous Track or Channel
5. Repeat Button
6. ⏭ Next Track or Channel
7. REC
8. Microphone Priority
9. mSD Card Slot
10. Mode (BT, AUX, FM, USB, mSD)
11. USB Port
12. Master Volume Control
13. Treble Control
14. Bass Control
15. 5 Band Equalizer
16. Microphone Tone Control
17. Microphone Echo Control
18. Guitar Volume Control
19. Microphone Volume Control
20. Guitar Input
21. Microphone Input
22. XLR Guitar Input
23. XLR Microphone Input
24. RCA AUX Input
25. AUX Volume Control
26. XLR AUX Input
27. XLR AUX Output
28. Power On/Off
29. AC INPUT
30. SPEAKON OUT for External Speaker Connection

Remote Control



1. Mute Control Button
2. 0-9 Number Control Button to Selecting MP3 Song
3. Repeat Control Button
4. Recording & Replay Button
5. USB/mSD Control Button
6. AUX Control Button
7. Previous Channel (-) & Next Channel (+)
8. EQ Control Button
9. Power Switch Button
10. Mode Control Button
11. Pause / Play & Channel Scan Button
12. Volume- & Volume+ Button
13. FM Control Button

General Instructions

BT Connectivity

Turn ON the speaker, press **Mode** button to switch to BT Mode. Switch ON BT on your phone or tablet and search for nearby BT devices, Search for the BT name **ZEB-EPIC** and tap to connect it.

USB/mSD Mode

The speaker automatically switches to USB/mSD input mode when a USB flash drive/mSD Card is inserted. The songs from the audio source can be heard through the speaker (this mode isn't selectable on the speaker unless a USB/mSD is connected to the speaker). Single Press the **⏮** to switch to previous audio track and Single Press the **⏭** button to switch to next audio track.

FM Radio

Press the **Mode** button to select **FM** mode. single press Play pause button to initiate FM Scanning process. Once the scanning process is done, the Speaker automatically plays the First channel of the FM. Press **⏮** to switch to previous FM channel and Press **⏭** to switch to next FM channel.

AUX-IN

Switch the speaker to AUX mode. The speaker can be connected to an audio source

using the provided aux cable. Connect the one end of the cable to the speaker and the other end to an audio source. The songs from the audio source can be heard through the speaker.

Recording Function

- First plug-in a USB/mSD flash card which will act as a storage device into the slot provided on the speaker.
- Press the **REC.Replay** button on the remote to start the recording.
- Press the **REC.Replay** button again to stop the recording.
- Press the **REC.Replay** button to play the recorded file.

