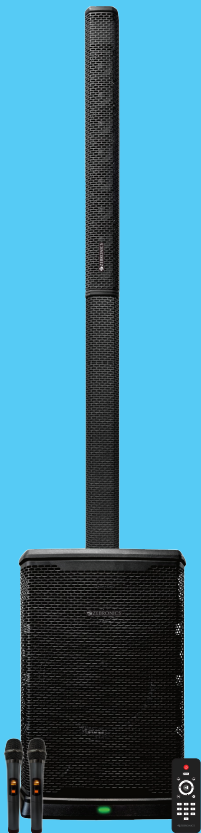




Column PA Speaker  
**SOUND BEAM 100**



# User Manual

[www.zebronic.com](http://www.zebronic.com)

## **Dear Customer,**

Thank you for purchasing **ZEB-XSPK 107, ZEB-SOUND BEAM 100** Column PA Speaker. Please read the user manual carefully before usage & save it for future reference.

### **Note:**

- Avoid the usage of this product at the high temperature and high humidity environment.
- Avoid the self-disassembly of the products or it results in the voiding the product's Warranty.
- Turn off the speaker when the speaker is not in use.
- To know more about Terms and conditions for warranty policy, please visit

<https://zebronics.com/pages/warranty-policy>

### **Features:**

- 800W RMS Output
- 30.48cm Subwoofer Driver
- 8 x Neodymium Full Range Column Drives
- 4 DSP EQ Presets
- Powerful Bass
- TWS Function
- Dual UHF Wireless Mic
- Karaoke Function
- Multi Connectivity (BT v5.0 | USB | AUX | RCA)

- 6.3mm & XLR Mic Inputs
- 6.3mm & XLR Guitar Inputs
- XLR Line Input
- Volume, Bass & Treble Controls
- Mic Volume & Echo Controls
- LCD Display
- Remote Control

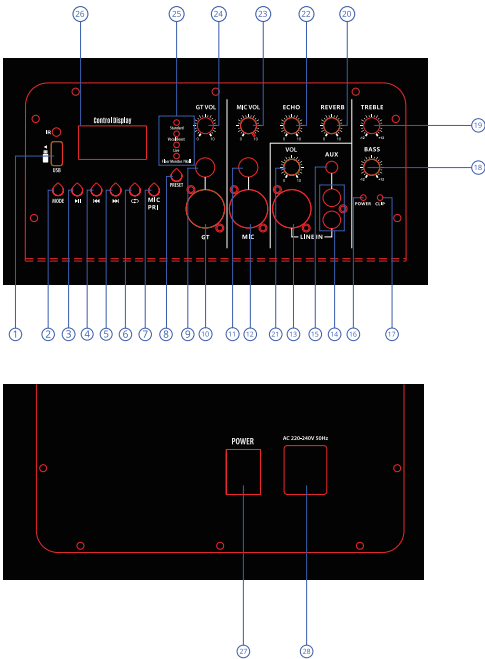
### **Specification:**

Model No.	: ZEB-XSPK 107
Output Power	: 800W (RMS)
BT version	: v5.0
Driver Size	
Subwoofer	: 30.48cm
Full Range	: 6.98cm x 8
Impedance	
Subwoofer	: 4Ω
Full Range	: 8Ω (Column)
Frequency response	: 40Hz-20KHz
S/N Ratio	: ≥82dB
File format	
support USB	: MP3
Line input	: AUX, RCA & XLR
Max. Supported	
Memory Size	: 32GB(USB)
BT name	: ZEB-Sound Beam 100
Product Dimension (W x D x H)	
Column (Single)	: 9 x 8 x 77cm
Subwoofer	: 37 x 43 x 54cm
Net.Weight	
Columns	: 3.7kg
Subwoofer	: 19.1kg
Total	: 22.8kg

**Package Contents:**

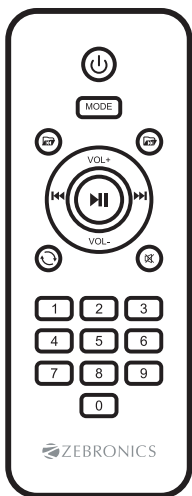
Subwoofer	: 1 U
Column Speaker	: 1 U
Bottom Spacer Column	: 1 U
Input cable	: 1 U
Power Cord	: 1 U
Remote	: 1 U
Wireless Mic	: 2 U
QR Code Guide	: 1 U

**Product Description :**  
**Contol Panel :**



1. USB
2. Mode
3. Play/Pause
4. Previous
5. Next
6. Repeat
7. Mic Priority
8. DSP EQ Presets
9. 6.35mm Guitar input
10. XLR Guitar input
11. 6.35mm Mic Input
12. XLR Mic input
13. XLR Line Input
14. 2CH-RCA input
15. AUX input
16. Power Indicator
17. Clip Indicator
18. Bass Control Knob
19. Treble Control Knob
20. Reverb Control Knob
21. Volume Control Knob
22. Echo Control Knob
23. Mic Volume Control Knob
24. Guitar Volume Control knob
25. Preset DSP EQ Indicators
26. LCD Display.
27. Power On/Off Switch
28. AC Power IN

## Remote Control:



	Standby
	USB/BLUETOOTH (Audio input)
	Prev
	Next
	Play/pause/FM tuner
	Volume up
	Volume down
	Next Folder
	Prev Folder
	Repeat
	Mute
	Number

## Instruction for Use:

### Button Function:

- Turn the speaker ON/OFF using the power switch.
- Press MODE / TWS button to change it to BT mode.
- Use Master volume control knob to increase / decrease the volume.
- Use MIC volume control buttons to increase / decrease the MIC volume.
- Press Prev/Next button to control the media.
- Press Play-Pause button to play track or pause track being played.

### **Pairing with the Bluetooth speaker:**

- Power ON the Speaker and you will hear the indication tone for the BT mode.
- Turn ON BT on your phone or tablet and search for the nearby BT compatible devices.
- Search for the BT name "ZEB-Sound Beam 100" and tap to connect it.

### **USB Mode:**

Once the speaker is ON, insert the USB drive to the respective ports of the **"ZEB-SOUND BEAM 100"** and the speaker will automatically detect the track from the USB drive/Micro SD card and play.

- Press Prev/Next button to control the media.
- Use the Master volume knob to control the volume of the speaker.

### **Connecting Audio Inputs :**

- Connect the speaker to an audio source using one of the following methods, depending on your setup:
- **3.5 mm AUX** – Use a standard stereo mini-jack cable.
- **2-Channel RCA** – Connect via left/right RCA cables. (Cable Not Included)
- **XLR** – Use a balanced XLR cable (Cable Not Included)

Choose the connection type that matches your source equipment, plug it into the speaker's corresponding input, and adjust volume levels as needed.

### **TWS Function:**

Switch ON two **"ZEB-SOUND BEAM 100"** speakers you want to pair.

- Press & hold the MODE / TWS button for 5–10 seconds in any one speaker to activate TWS mode.
- After few seconds, both the speakers will be connected successfully.
- Now, search for nearby BT device in your mobile and Tap on the BT name **"ZEB-SOUND BEAM 100"** to connect.
- To exit TWS mode, Press & hold mode button for 5–10 seconds in any one speaker to exit from TWS mode.

### **Power Source**

- The Speaker is designed to operate in AC 220 - 240V 50Hz.