



ZEBRONICS
ALWAYS AHEAD

NEB Portable BT Speaker
BARREL 90



User Manual

www.zebronics.com

Thank you for purchasing **ZEB-BARREL 90** Portable BT Speaker. Please read the user manual carefully before usage & save it for future reference.

Note:

- Avoid the usage of this product at the high temperature and high humidity environment.
- Avoid the self-disassembly of the products or it results in the voiding the product's Warranty.
- Turn off the speaker when the speaker is not in use.

To know more about Terms and conditions for warranty policy, please visit

<https://zebronics.com/pages/warranty-policy>

Features:

Wireless BT v5.0

Supports USB & mSD

Built-in FM Radio

AUX Input

TWS Function

6.3mm Microphone input

Media / Volume control

Built-in Rechargeable battery

Specifications:

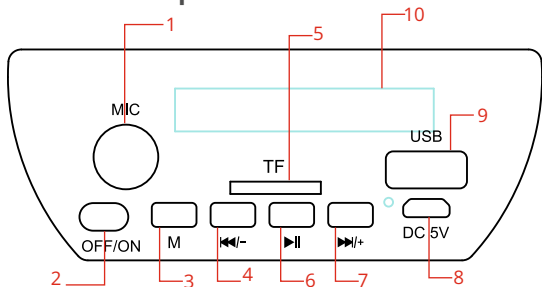
Output Power (RMS)	: 15W
BT Version	: v5.0
Driver Size	: 7.62cm
Speaker Impedance	: 4Ω
Frequency Response	: 150-18kHz
S/N Ratio	: ≥80dB
Max Supported USB/ mSD memory size	: 32GB
Supported Audio formats	: MP3
Charging time	: 3.5h
Playback time	: 4h*
Product Dimension (Dia x H)	: 13 x 29.7 cm
Net. Weight	: 858g

Package Contents

Speaker	: 1 U
Micro USB Charging/3.5mm aux cable	: 1 U
QR Code Guide	: 1 U

at 50% Volume (LED Off)

Button Description:



1. Microphone Input
2. Power On/Off switch
3. Mode button / TWS button
4. Previous / volume - button
5. mSD port
6. Play/Pause / LED control button
7. Next / volume + button
8. Charging port
9. USB port
10. LED display

General instructions:

Charging Instructions

Connect the one end of the power cable to speaker and connect the other end to a rated DC 5V adapter. The Speaker has constant Red led indication when the speaker is charging. The Indicator turns off when the speaker is completely charged.

BT Mode

Turn ON the speaker, press **M** button to switch to BT Mode. Switch ON BT on your phone or tablet and search for nearby BT devices, Search for the BT name "**ZEB-BARREL 90**" and tap to connect it.

TWS Function

- Turn on two **ZEB-BARREL 90** speakers.
- Press and hold the M button for few seconds on any one speaker to activate TWS function.
- After Few seconds, you'll hear TWS connected notification from the speakers when they are connected successfully.
- Now, search for nearby BT device in your mobile and Tap on the BT name **ZEB-BARREL 90** to pair the speaker.

Note: Requires two **ZEB- BARREL 90** speakers for TWS feature.

AUX-IN

Switch the speaker to AUX mode. The speaker can be connected to an audio source using the provided charging/aux cable. Connect the charging end of the cable to the speaker and the other end to an audio source. The songs from the audio source can be heard through the speaker.

USB/mSD Mode

The speaker automatically switches to USB/mSD input mode when a USB flash drive/mSD card is inserted. The songs from the audio source can be heard through the speaker (this mode isn't selectable on the speaker unless a USB/mSD flash drive is connected). Single Press The **⏮** to switch to previous audio track and Single Press the **⏭** button to switch to next audio track.

FM Mode

Press the **M** button to select FM mode. Long press **⏭** button to initiate FM Scanning process. Once the scanning process is done, the Speaker automatically plays the First channel of the FM. Press **⏮** to switch to previous FM channel and Press **⏭** to switch to next FM channel.

LED Light control

Press and hold the **⏭** button to Turn ON/OFF the LED Lights.

