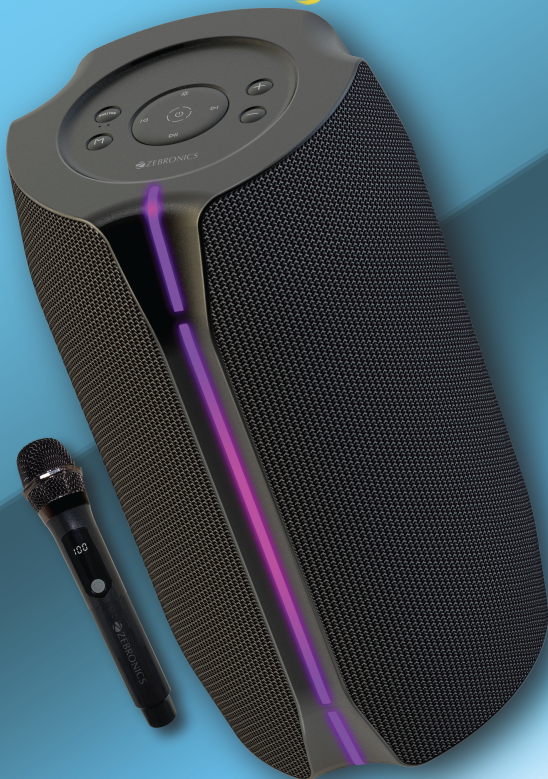




Portable BT Speaker

# ZEB **PARTY** *Fyre* 300



## User Manual

[www.zebronics.com](http://www.zebronics.com)

Thank you for purchasing the **ZEB-Party Fyre 300** Portable BT Speaker. Please read the user manual carefully before usage & save it for future reference.

### **Note:**

- *Avoid the usage of this product at high-temperature environments and high-humidity*
- *Avoid the self-disassembling of the product or it will result in voiding the Product's warranty.*

### **Caution:**

- *There is a risk of explosion if the product is disposed in the fire*
- *To know more about Terms and conditions for warranty policy, please visit*

<https://zebronics.com/pages/warranty-policy>

### **Features**

- 140W RMS Output
- Upto 9h\* Backup
- Speaker with 6 Drives
- TWS Function
- Karaoke Function
- Built-in 8000mAh Rechargeable Battery
- Wireless Rechargeable Mic with Display
- RGB LED Lights
- BT v5.3 | USB | AUX
- 6.3mm Microphone Input

\* at 70% Volume (LED Off)

- Volume, Bass & Treble Controls
- Type C charging
- Carry Handle

## Specifications

Model No : ZEB-USPK 103

Output Power (RMS) : 140W

BT Version : v5.3

Driver Size

Full Range : 10.2cm x 2

Mid Range : 9.3cm x 2

Tweeter : 4cm x 2

Speaker Impedance

Full Range :  $4\Omega$  x 2

Mid Range :  $6\Omega$  x 2

Tweeter :  $8\Omega$  x 2

Frequency Response : 65Hz-20KHz

S/N Ratio :  $\geq 65\text{dB}$

Max Supported USB

memory size : 32GB

Supported Audio formats : Mp3

Charging time : 6h

Playback time : 9h\*

Product Dimension : 26.4 x 26.3 x 48 cm  
(W x D x H)

Net. Weight : 6.4kg

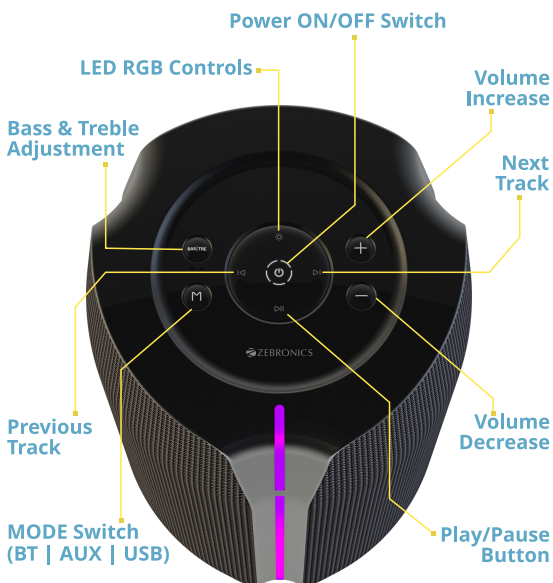
Country of Origin : PRC

*\* at 70% Volume (LED Off)*

## Package Contents

Speaker	: 1 U
Charging Cable	: 1 U
Wireless Microphone	: 1 U
Input cable	: 1 U
QR Code Guide	: 1 U

## Top Panel Description





# Port Description

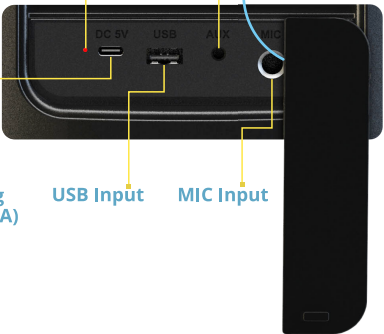
LED Charging Indicator

AUX Input

Type-C Charging (DC 5V/2A)

USB Input

MIC Input



# Mic Description



Display

Power Button

## General Instructions

### BUTTON FUNCTIONS:

1. Turn the speaker ON/OFF using the **Power** Button.
2. Use **Volume (+)** button to increase and **Volume (-)** button to decrease the volume of the speaker.
3. Press the **Prev/Next** button to control the media.
4. Press **Play/Pause** button to play track or pause track being played.
5. Press **Mode** Button to switch between BT | USB | AUX mode.
6. Press **Bass | Treble** button to adjust Bass or Treble of the speakers.
7. Press the **RGB LED** button to change the modes of the RGB lighting of the speaker.

### BT Mode

- Switch the speaker to BT mode
- Turn on BT on your mobile and scan for nearby BT devices.
- Tap on "**ZEB-PARTY FYRE 300**" to connect.

### USB Mode

- Insert the USB Drive into the slot provided on the speaker.
- The speaker will automatically detect the

USB drive and the supported audio connect will be played from it.

**Note:** *This mode isn't selectable on the speaker or remote control unless a USB drive and a supported audio content will be played from it.*

## AUX-Input

- The speaker can be connected to an audio source using a 3.5mm cable.
- Connect the one end of the cable to the AUX port on the speaker and the other end an audio source.
- The audio from the source can be played through the speaker.

## TWS Function

- Turn on both **"ZEB-PARTY FYRE 300"** speakers in BT (wireless) mode. Press and hold the Play/Pause button for 2 seconds in any one of the speaker to initiate TWS pairing.
- After few seconds both speakers will get connected successfully.
- Now search for nearby BT device in your mobile phone or other source device and tap on BT name **"ZEB-PARY FYRE 300"** to connect. To exit TWS mode, press and hold the Play/Pause button for 2 seconds.

## Bass & Treble Adjustment

- Press "BAS|TRE" to switch sound effect "TREBLE/BASS".
- BASS: The left light under the button is on.
- TREBLE: The right light under the button is on.
- When the corresponding sound effect light is on, press "+" / "-" to adjust the corresponding volume (range 0-10 levels).
- There will be a prompt sound when it reaches the maximum or minimum.

## LED Mode control

- Hold the LED button for more than 2 seconds to turn off the light.
- Press to turn on/ and switch between LED modes.

## Charging Instruction

- Using a DC 5V/2A power adapter connected with the Type-C charging cable provided.
- When charging, the LED indicator glows RED.
- When the speaker is fully charged, the RED light stops glowing.

**ISO 9001:2015 Certified Company**

**[www.zebronics.com](http://www.zebronics.com)**

