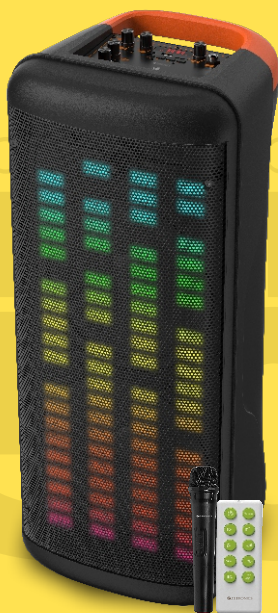




Portable BT Speaker

NEB THUMP 501



User Manual

www.zebronics.com

Dear Customer,

Thank you for purchasing **ZEB-THUMP 501** Portable BT Speaker. Please read the user manual carefully before usage & save it for future reference.

Note:

- Avoid the usage of this product at the high temperature and high humidity environment.
- Avoid the self-disassembly of the products or it results in voiding the product's Warranty.
- Turn off the speaker when it is not in use.
- To know more about Terms and conditions for warranty policy, please visit

<https://zebronics.com/pages/warranty-policy>

Features

BT v5.0 / USB / mSD / AUX / FM / Mic In

LED Display

TWS Function

6.3mm Microphone Input

Media/Volume Control

Volume, Bass & Treble Control

Mic Volume / Echo Control Knob

20.32cm Dual Full Range Drivers

7 RGB LED Modes + 1 Off Mode

Wireless Microphone

Built-In Rechargeable Battery

Karaoke Function

Specifications

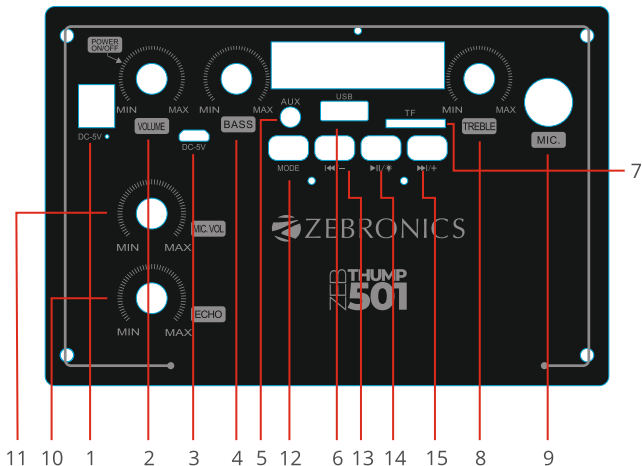
Output Power (RMS)	: 40W
BT Version	: v5.0
Driver Size	: 20.32 cm x 2
Speaker Impedance	: Mid Range - 4Ω x 2 Tweeter - 10Ω
Frequency Response	: 100Hz to 20kHz
S/N Ratio	: ≥ 80dB
Max Supported USB/mSD memory size	: 32GB
FM Frequency range	: 87.5 to 108MHz
Supported Audio formats	: MP3
Charging time	: 5H
Playback time	: 6H*
Product Dimension (W x D x H)	: 28 x 26 x 65 cm
Net. Weight	: 4.8kg

Package Contents

Speaker	: 1 U
Aux Cable	: 1 U
Charging Cable	: 1 U
QR Code Guide	: 1 U
Remote Control	: 1 U
Wireless Microphone	: 1 U

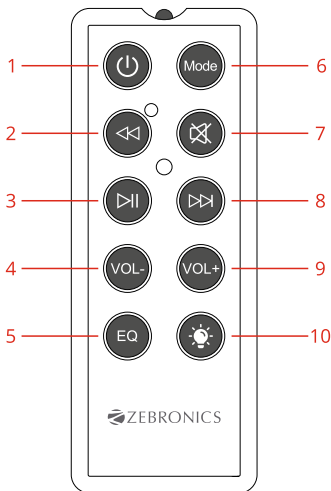
* at 50% volume (with LED off)

Buttons Description



- | | |
|-----------------------------------|--------------------------------------|
| 1.DC 5V | 10.Echo control |
| 2.Master Volume /
Power ON/OFF | 11.Mic. Volume Control |
| 3.mUSB DC 5V | 12.Mode Selection |
| 4.Bass Control | 13.Prev. / Vol - |
| 5.AUX | 14.Play/Pause /
RGB Light Control |
| 6.USB port | 15.Next / Vol + |
| 7.mSD Port | |
| 8.Treble Control | |
| 9.Mic. input | |

Remote Control :



1 .Power ON/OFF

2 .Previous

3 .Play/Pause

4 .Volume-

5 .EQ

6 .Mode

7 .Mute

8 .Next

9 .Volume+

10.LED Light Control

Instruction for Use:

Button Function:

1. Rotate the Volume knob clock wise to turn the speaker ON/OFF.
2. Press MODE button to change the speaker's input/source mode.
3. Use Master Volume control knob to increase / decrease the volume.

4. Use MIC volume control knob to increase / decrease the MIC's volume.
5. Press Prev./Next button to control the media.
6. Press Play/Pause button to play or pause media. Long press to change LED modes or On/Off LED lights.
7. There are 6 EQ presets in the speaker. Press the EQ button on the provided remote controller to select your preferred EQ mode.

Bluetooth Mode:

1. Power ON the speaker and you will hear the indication tone for the BT mode.
2. Turn ON BT on your phone, tablet or laptop and search for the nearby BT compatible devices.
3. Search for the BT name "**ZEB-THUMP 501**" and tap on it to connect.

Micro SD / USB Mode:

Once the speaker is ON, insert the micro SD card / USB drive into the respective ports of the "**ZEB-THUMP 501**" and the speaker will automatically detect the tracks from the USB drive/Micro SD card and plays MP3 files automatically.

Press Prev./Next button to control the media.

FM Radio:

Once the speaker is turned ON, press the MODE button and select FM mode.

Press Play/Pause button to auto scan the available FM channels.

Use Prev./Next button to change the FM channels.

***Note:** For better FM reception, Please use the provided AUX Cable.*

TWS Function:

- Switch ON two "**ZEB-THUMP 501**" speakers you want to pair and make sure the both speaker is in BT discovery mode.
- Press & hold the Mode button for 5 seconds in any one speaker to activate TWS mode.
- After few seconds, both the speakers will be connected successfully.
- Now, search for nearby BT device in your mobile and Tap on the BT name "ZEB-THUMP 501" to connect.

Wireless Microphone:

- Use two AA size batteries for powering the provided wireless microphone.
- The wireless MIC connects to the speaker automatically once it's turned on.
- You can use the ECHO and MIC. Vol knob to control individual levels accordingly.

AUX Mode:

- Use the provided 3.5mm aux cable and plug it in the speaker's aux port.
- Now connect the other end of the aux cable to any aux output audio source.
- After the speaker is turned ON, press the MODE button twice for AUX mode.

Note: *Kindly follow the above steps before increasing the volume to avoid pops and cracks or sudden loud volume which might damage the speaker.*

Charging the Speaker:

1. Connect the charging cable to DC 5V port of the speaker and insert the other end into a DC 5V charging power source/adaptor.
2. Red LED blinks indicating that the battery is being charged.
3. Red LED goes OFF after speaker gets fully charged.

ISO 9001:2015 Certified Company

www.zebronics.com

