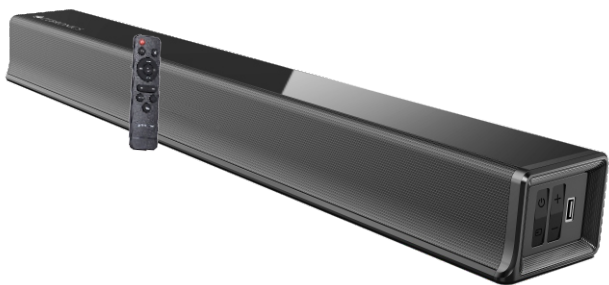


 ZEBRONICS

sound bar
ZEB **Juke Bar**
NEB **2510**



User Manual

www.zebronics.com

Important Safety Instruction

Thank you for purchasing the **ZEB-JUKE BAR 2510** Soundbar. Please read this user manual carefully and keep for future reference.

Warning



Caution:

- To reduce the risk of electric shock, do not dismantle the product and do not expose the apparatus to rain or moisture. No user-serviceable parts inside.
- Refer servicing to qualified personnel only.



The lightning flash within an equilateral triangle is intended to alert you to the presence of uninsulated dangerous voltage within the product's enclosure that may be of sufficient magnitude to constitute an electric shock to a person or persons.



Important! This symbol alerts you to read and observe important warnings and instructions on the unit or in this manual.

Notice:

Children should be supervised to ensure that they do not play with the appliance.

1. To prevent possible hearing damage, do not listen at high volume levels for long time periods or a sudden high volume level.

2. Never use the device unsupervised!

Switch off the device whenever you are not using it, even if not using it only for a short while.



3. The appliance is not intended to be operated by means of an external timer or separate remote control system.
4. If the power adapter cord is damaged, it must be replaced by the manufacturer, its service agent or similarly qualified persons in order to avoid a hazard.
5. Before operating this system, check the voltage of this system to see if it is identical to the voltage of your local power supply.
6. The unit should not be impeded by covering the ventilation opening with items such as newspaper, table-cloths, curtains etc. Make sure that there are at least 20 cm of space above and at least 5 cm of space on each side of the unit.
7. The apparatus must not be exposed to dripping or splashing liquid, no objects filled with liquids such as vases, should be placed on the apparatus.
8. To prevent fire or shock hazard, do not expose this equipment to direct heat, rain, moisture or dust.
9. Do not position this unit near any water sources e.g. taps, bathtubs, washing machines or swimming pools. Ensure that you place the unit on a dry, stable surface.
10. Do not place this unit close to a strong magnetic field.

11. Do not place the unit on a amplifier or receiver.

12. Do not place this unit in a damp area as the moisture will affect the life of electric components.

13. Do not attempt to clean the unit with chemical solvents as this might damage the finish. Wipe with a clean, dry or slightly damp cloth.

14. When removing the power adaptor cord from the wall outlet, always pull directly on the plug, never pull on the cord.

15. Depending on the electromagnetic waves used by a television broadcast, if a TV is turned on near this unit while it is also on, lines might appear on the LED TV. Neither this unit nor the TV is malfunctioning. If you see such lines, keep this unit well away from the TV set.

Important Safety Instructions

1. Read these instructions. Keep these instructions. Follow all instructions. Heed all warnings.

2. Do not use this apparatus near water.

3. Clean only with dry cloth.

4. Do not block any ventilation openings. Install in accordance with the manufacturer's instructions.

5. Do not install near any heat sources such as radiators, heaters, stoves, or other apparatus (including amplifiers) that produce heat.

6. Protect the power adaptor cord from being walked on or pinched particularly at plugs, convenience receptacles or at the point where they exit from the apparatus.

7. Only use attachments/accessories specified by the manufacturer.

8. Unplug this apparatus during lightning storms or when unused for long periods of time.

9. Refer all servicing to qualified service personnel. Servicing is required when the apparatus has been damaged in any way, for example, when the power adaptor cord or plug is damaged, liquid has been spilled or objects have fallen into the apparatus, the apparatus has been exposed to rain or moisture, does not operate normally, or has been dropped.

Power Source:

This soundbar is designed to operate in DC 15V \approx 1.6A.

Important Notes

- Safety and operating instruction manual should be retained for future reference.
- The apparatus should not be exposed to dripping, splashing or placed in a humid atmosphere such as a bathroom.
- Do not install the product in the following areas

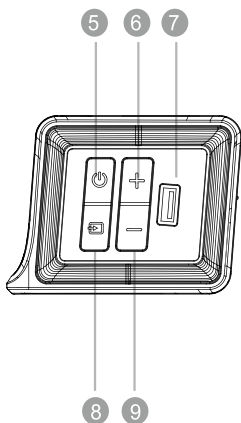
- Places exposed to direct sunlight or close to radiators.
- On top of other stereo equipment that radiate too much heat -Blocking ventilation or in a dusty area.
- Areas where there is constant vibration.
- Humid or moist places.
- Do not place near candles or other flames.
- Operate the product only as instructed in this manual.
- Before turning on the power for the first time, make sure the sound bar is plugged to power outlet.
- For safety reasons, do not remove any covers or attempt to gain access to the inside of the product. Refer any servicing to qualified personnel.
- Do not attempt to remove any screws, or open the casing of the unit; there are no user serviceable parts inside. Refer all servicing to qualified service personnel.

Product Representation

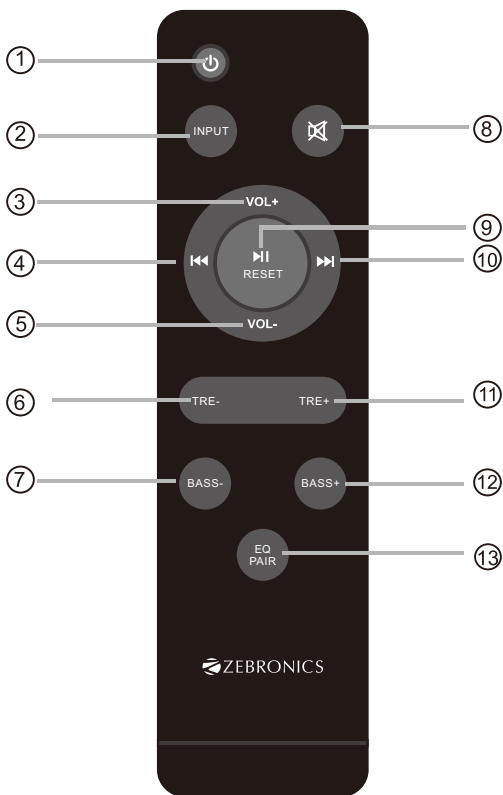
Sound Bar






1. LED Indicator
2. AUX
3. HDMI(ARC)
4. DC IN
5. Power /Source
6. Volume +
7. USB
8. INPUT
9. Volume -




Remote Control



1.  : Standby mode for power on/off.
2. INPUT : Input mode Selection.
3. Vol+ : Volume Increase.
4.  : Previous Track (Only work under USB & BT Mode).
5. Vol- : Volume Decrease.
6. TRE- : Treble Decrease.
7. Bass- : Bass Decrease.
8. Mute : Mute Mode.
9.  / RESET

Play/Pause : Play / Pause for Current Track (Only work under USB and BT mode).

Reset : Press and hold the button more than 2 sec. to Set all functions to manufacturer defaults.

10.  : Next Track (Only work under USB & BT mode).
11. TRE+ : Treble Increase.
12. BASS+ : Bass Increase.
13. EQ/PAIR

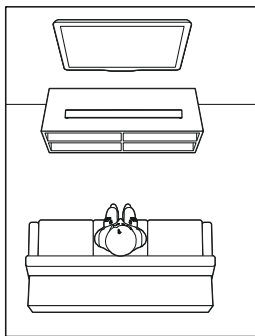
EQ : Press in one time for one mode of EQ. Music/Movie/News/Sport total four modes when circulate press the button in short time.

Pair : Press and hold more than 2 sec. to disconnect paired BT device. Press and hold more than 2 sec. to connect back last disconnect BT device.

Positioning the Sound Bar

Place on a flat Surface

Place the sound bar horizontally on a flat surface such as a TV unit or shelves and align it centrally with the TV screen. Allow some space between the speaker and the wall. Don't place inside a cabinet or an a walled shelf. Follow this guidance for best sound output and good airflow around the sound bar.



Mount on the wall

WARNING : If you don't feel confident to correctly and securely wall-mount the sound bar, Seek the assistance of an experienced person of professional.

Install the speaker on a vertical, fast, reinforced area of wall. For plaster walls, it is recommended to screw into wall studs for greater security. For optimum performance, allow at least 25mm/1" distance between the sound bar and the TV.

Follow below steps to mount the sound bar on the wall

1. Make 2 holes on the wall with distance same as the wall bracket on the soundbar
2. Put the plastic anchors onto the wall and secure the screws to the plastic clip, do not tighten the screws all the way make sure leave some space
3. Attached the 2 EVA pads onto the wall mount bracket. This will make sure that there is enough room between the wall and the soundbar outlet, minimum 15mm
4. Once the screws securely fastened, hang the sound bar over by inserting the screws onto the wall mount bracket

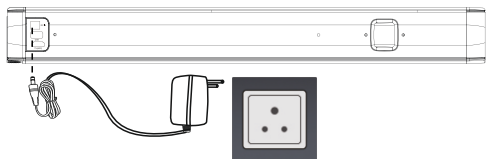
OPERATE INSTRUCTIONS

Setting the Soundbar

1. Plug the adapter power cord in and the LED will light up.
2. Press the PUSH button on the soundbar to power on. Press again this button to switch the input mode.
3. The indicator can change into to different colors, representing different states:
Red : Standby
Blue : BT Mode
Pink : USB Mode
Green : AUX

Powering On/Off

1. Plug the adapter power cord of the sound bar into the wall socket. The sound bar will automatically enter standby mode.
2. Press the PUSH button on the sound bar to power on. Press again this button to switch the input mode.
3. To turn it off, press and hold the PUSH button on the sound bar for about 2 seconds to enter standby mode, and then unplug it from the wall socket.



Playing Audio via BT Connection

- 1.. Use either the buttons on the Sound Bar or the **"Input"** button on the remote to activate BT mode. A Blue LED indicator will indicate that BT mode has been selected.
2. Activate the pairing function on your phone or other compatible device and select **"ZEB-JUKE BAR 2510"**
3. When successfully paired, you will hear a tone and the LED will stay on
4. The remote control includes BT mode playback controls

Notes:

- If your Pairing device Switched off or Manual disconnected, the sound bar will automatically enter pairing mode
- If the connected device is switched off or manual disconnected, the sound bar will automatically enter pairing successfully connected device will be re-established once you re-enter wireless range(10meters) to connect to other devices repeat the above pairing steps.
- There is no automatic shutdown in pairing mode. The sound bar will remain in pairing mode even if no device is paired, so switch off if not in use.



Playing Audio via USB Port

When the USB flash drive is plugged in, the sound bar automatically switches to USB input mode. A Pink LED indicator will indicate that USB mode has been selected. This mode cannot be selected on the sound bar or remote control unless it is connected to a USB flash drive.

1. Ensure that your USB flash drive contains MP3 audio files (other file types not supported)
2. Connect the USB flash drive to the USB port on the sound bar (or your own USB extension cable connected to the USB port); music will automatically play.

HDMI (ARC) Mode

1. The sound bar supports HDMI(ARC) with audio return channel (ARC). You can hear the TV audio through your Sound bar by using a single HDMI(ARC) cable. But on condition that your TV is ARC compliant.
2. Using a high speed HDMI(ARC) cable, connect the HDMI(ARC) connector on the sound bar to the HDMI(ARC) connector on the TV. The HDMI(ARC) connector on the TV might be labeled differently.

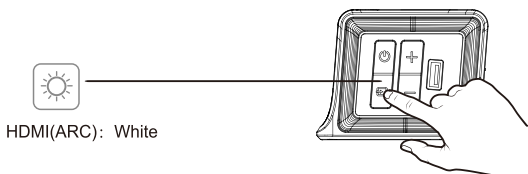
For details, see the user manual of your TV.

3. When HDMI(ARC) is connected, TV sound setting in "sound output" mode should be set as <external PCM Stereo>, in addition, digital audio output mode should be set as <automatic> or <decoded output as PCM state>. When the HDMI(ARC) cable is connected, the TV digital audio output is set as PCM format. Then start playing music on the TV.

4 Press input button on the remote control or push button on sound bar to select HDMI (ARC) mode. After connection, the source LED light is indicating while color. Different TV might be different setting, please refer to your TV User Manual.

Note:

1. When connecting a device such as a TV/Set-top box/DVD/ game console with HDMI(ARC) cable, set the audio output mode of the device to PCM mode <digital HDMI (ARC) output>.
2. The TV is connected to a HDMI(ARC) port with sound bar. Different TV's might have different setup menus. but the operation approach is the same.
3. If needs to connect set-up box meanwhile, please firstly connect the HDMI(ARC) connector and paired to the soundbar. Then connect the set-top box.



TROUBLESHOOTING

PROBLE/TROUBLE	POSSIBLE CAUSE	SOLUTION
There is no sound output from sound bar.	Another input source is selected.	Select an appropriate input source.
	The mute function is activated.	Cancel the mute function.
	The volume of sound bar or TV/other device is adjusted too low.	Increase the volume level on sound bar or by remote control or on TV.
	The power cable of the unit is not connected properly.	Make sure that the power adaptor cable of the unit is connected to an AC wall outlet securely.
	Input jacks on a playback device are connected.	Connect the input jack on the sound bar and the output jack on the playback device.
	Signals that the sound bar cannot playback when being input.	When sound bar and TV or other devices are connected by an audio cable through TV (ARC) port output. Select the correct audio input and output. Make sure the digital audio output setting on the playback device to PCM format. Since the output format of our sound bar is PCM, if it is used, the decoding format of TV or other devices will be adjusted to PCM state.
The sound is distorted or echoed.	TV volume is not muted.	If you play audio from TV through the sound bar, make sure that the TV is muted.
The volume decreases when the unit is turned on.	The automatic volume adjustment function is activated. To prevent excessive loudness, the unit automatically controls its volume within a certain level when the unit is turned on.	Turn up the volume as required.
Noise is heard.	The sound bar is too close to another digital or high-frequency device.	Move those devices away from the sound bar.
A device cannot connect the sound bar or the unit cannot be connected to a Bluetooth device.	Bluetooth function of the device is not activated, not paired or connected correctly.	Restart the sound bar and try pairing again. You have not enabled the Bluetooth function of the device; see the user manual of the device on how to enable the function and correctly connected the device. The sound bar is already connected with another Bluetooth device. Disconnect the connected device, and then try again.
	Bluetooth is not selected as the input source.	Select Bluetooth as the input source.
	The unit is connected to a different Bluetooth device.	Un-pair the Bluetooth device that is currently connected and pair with the desired Bluetooth device.
	The unit is too far away from the Bluetooth device.	Move the Bluetooth device closer to this unit.
	A device emitting electromagnetic waves (such as a microwave oven, a wireless device and so on) may be placed nearby.	Do not use this unit near devices that emit electromagnetic waves.
	The Bluetooth device that you are using may not support the protocol.	Use a Bluetooth device that supports the protocol.
	The connection profile registered in the Bluetooth device may not be functioning correctly for some reason.	Delete the connection profile in the Bluetooth device and then connect the Bluetooth device to this unit.
PROBLE/TROUBLE	POSSIBLE CAUSE	SOLUTION
Sound quality of audio play from a connected Bluetooth device is poor and connection is not stable.	The Bluetooth reception is poor.	Move the device closer to the sound bar, or remove any obstacle between the device and the sound bar.
No sound can be heard or sound breaks (Bluetooth mode)	The volume on the Bluetooth device may be too low.	Raise the volume on the Bluetooth device.
	Bluetooth is not selected as the input source.	Select the Bluetooth as the input source.
	Playback on the device has not been performed.	Perform playback on the device.
	The sound output on the Bluetooth device may not be set to this unit.	Select this unit as the output device on the Bluetooth device.
	The connection to the Bluetooth device was cut off.	Connect with the Bluetooth device one more time.
	The unit may be too far away from the Bluetooth device.	Move the Bluetooth device near this unit.
	A device emitting electromagnetic waves (such as a microwave oven, a wireless device and so on) may be placed nearby.	Do not use this unit near device that emit electromagnetic waves.
There is no sound from sound bar - HDMI TV (ARC) Mode	No qualified HDMI TV (ARC) cable is used & No signal is input on sound bar & connection and operation method is not correct.	<ol style="list-style-type: none"> 1. Make sure that the user connected TV and sound bar by a 19-core HD ARC cable. 2. The sound bar and TV are connected through TV (ARC) port output; make sure that the TV is ARC compliant. 3. Set the TV to HDMI ARC (CEC). Set the audio output mode of TV to PCM format. (Or refer to your TV user manual)

Features:

Multi Connectivity (BT v5.0 | HDMI (ARC) | USB | AUX)

LED indicator

Powerful Dual Drivers

External Power Adapter

Glossy Finish

Remote Control

Specifications

Output Power (RMS)	: 40W (20W +20W)
Driver Size	:(5.4 x 9.5cm) x 2
Impedance	: 4Ω x 2
Frequency response	: 20Hz-20kHz
S/N Ratio	: ≥65dB
Separation	: ≥40dB
File format support (USB)	: Mp3
Line input	: 3.5mm, HDMI (ARC)
Max supported memory size (USB)	: 32GB
BT name	: ZEB-JUKE BAR 2510
BT version	: v5.0
Product Dimension (W x D x H)	: 70 x 8.5 x 6.5 cm
Net.Weight	: 1.5Kg

Package Contents:

Sound Bar	: 1 U
QR Code Guide	: 1 U
Power Adapter	: 1 U
Remote control	: 1 U

ISO 9001:2015 Certified Company

www.zebronics.com

