

 ZEBRONICS

Soundbar
B J U K E B A R
N 9300C



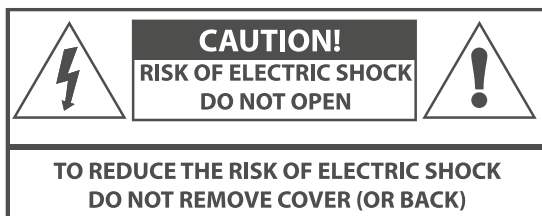
User Manual

www.zebronics.com

Important Safety Instruction

Thank you for purchasing the **ZEB-JUKE BAR 9300C** Soundbar. Please read this user manual carefully and keep for future reference.

Warning



Caution:

- To reduce the risk of electric shock, do not dismantle the product and do not expose the apparatus to rain or moisture. No user-serviceable parts inside.
- Refer servicing to qualified personnel only.



The lightning flash within an equilateral triangle is intended to alert you to the presence of uninsulated dangerous voltage within the product's enclosure that may be of sufficient magnitude to constitute an electric shock to a person or persons.



Important! This symbol alerts you to read and observe important warnings and instructions on the unit or in this manual.

Notice:

This appliance is not intended for use by persons (including children) with reduced physical sensory or mental capabilities, or lack of experience and knowledge, unless they have been given supervision or instruction concerning use of the appliance by a person responsible for their safety.

Children should be supervised to ensure that they do not play with the appliance.

1. To prevent possible hearing damage, do not listen at high volume levels for long time periods or a sudden high volume level.



2. Never use the device unsupervised! Switch off the device whenever you are not using it, even if not using it only for a short while.
3. The appliance is not intended to be operated by means of an external timer or separate remote control system.
4. If the supply cord is damaged, it must be replaced by the manufacturer, its service agent or similarly qualified persons in order to avoid a hazard.
5. Before operating this system, check the voltage of this system to see if it is identical to the voltage of your local power supply.
6. The unit should not be impeded by covering the ventilation opening with items such as newspaper, table-cloths, curtains etc. Make sure that there are at least 20 cm of space above and at least 5 cm of space on each side of the unit.
7. The apparatus must not be exposed to dripping or splashing liquid, no objects filled with liquids such as vases, should be placed on the apparatus.
8. To prevent fire or shock hazard, do not expose this equipment to direct heat, rain, moisture or dust.
9. Do not position this unit near any water sources e.g. taps, bathtubs, washing machines or swimming pools. Ensure that you place the unit on a dry, stable surface.

10. Do not place this unit close to a strong magnetic field.
11. Do not place the unit on a amplifier or receiver.
12. Do not place this unit in a damp area as the moisture will affect the life of electric components.
13. Do not attempt to clean the unit with chemical solvents as this might damage the finish. Wipe with a clean, dry or slightly damp cloth.
14. When removing the power plug from the wall outlet, always pull directly on the plug, never pull on the cord.
15. Depending on the electromagnetic waves used by a television broadcast, if a TV is turned on near this unit while it is also on, lines might appear on the LED TV. Neither this unit nor the TV is malfunctioning. If you see such lines, keep this unit well away from the TV set.
16. The mains plug is used to disconnect the device, the disconnected device should remain readily operable.

Important Safety Instructions

1. Read these instructions. Keep these instructions. Follow all instructions. Heed all warnings.
2. Do not use this apparatus near water.
3. Clean only with dry cloth.

4. Do not block any ventilation openings. Install in accordance with the manufacturer's instructions.
5. Do not install near any heat sources such as radiators, heaters, stoves, or other apparatus (including amplifiers) that produce heat.
6. Protect the power cord from being walked on or pinched particularly at plugs, convenience receptacles or at the point where they exit from the apparatus.
7. Only use attachments/accessories specified by the manufacturer.
8. Unplug this apparatus during lightning storms or when unused for long periods of time.
9. Refer all servicing to qualified service personnel. Servicing is required when the apparatus has been damaged in any way, for example, when the power-supply cord or plug is damaged, liquid has been spilled or objects have fallen into the apparatus, the apparatus has been exposed to rain or moisture, does not operate normally, or has been dropped.
10. The AC plug is used to disconnect the device, the disconnected device should remain readily operable. In order to disconnect the apparatus from the AC power completely, the AC plug must be removed from the AC outlet completely.

Preparation for Use

Unpacking and Set Up

- Remove the Sound bar from the carton and remove all packing material from the Sound bar. Save the packing material, if possible, in case the Sound bar ever needs to be serviced or transported.
- The original carton and packing material is the only safe way to pack your Sound bar to protect it from damage in transit.
- Remove any descriptive labels or stickers on the front or top of the cabinet. Do not remove any labels or stickers from the back or bottom of the cabinet.
- Place your Sound bar on a level surface such as a table, desk or shelf, convenient to an AC outlet, out of direct sunlight, and away from sources of excess heat, dirt, dust, moisture, humidity, or vibration.
- Unwind the Line cord connecting the AC adapter and extend it to its full length.

Protect Your Furniture

This model is equipped with non-skid rubber 'feet' to prevent the product from moving when you operate the controls. These 'feet' are made from non-migrating rubber material specially formulated to avoid leaving any marks or stains on your furniture. However certain types of oil based furniture

polishes, wood preservatives, or cleaning sprays may cause the rubber 'feet' to soften, and leave marks or a rubber residue on the furniture. To prevent any damage to your furniture we strongly recommend that you purchase small self-adhesive felt pads, available at hardware stores and home improvement center everywhere, and apply these pads to the bottom of the rubber 'feet' before you place the unit.

Important Notes

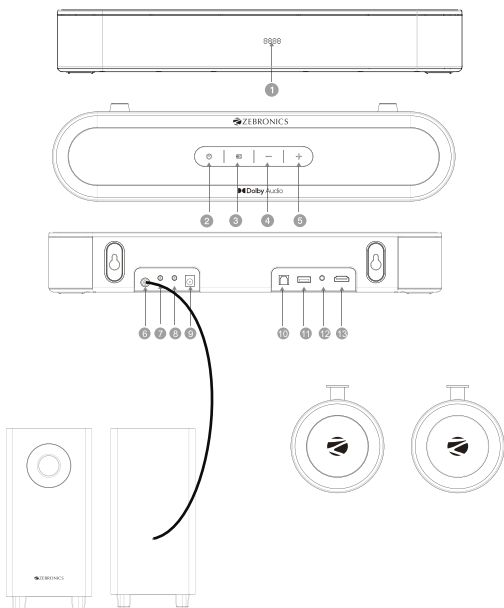
- This soundbar was especially developed for LED/LCD/Plasma TVs: It should not be used in combination with CRT TV's (Cathode Ray Tube TV's) in order to avoid image interference.
- Safety and operating instruction manual should be retained for future reference.
- The apparatus should not be exposed to dripping, splashing or placed in a humid atmosphere such as a bathroom.
- Do not install the product in the following areas:
 - Places exposed to direct sunlight or close to radiators.
 - On top of other stereo equipment that radiate too much heat -Blocking ventilation or in a dusty area.
 - Areas where there is constant vibration.

- Humid or moist places.
- Do not place near candles or other flames.
- Operate the product only as instructed in this manual.
- Before turning on the power for the first time, make sure the sound bar is plugged to power outlet.
- For safety reasons, do not remove any covers or attempt to gain access to the inside of the product. Refer any servicing to qualified personnel.
- Do not attempt to remove any screws, or open the casing of the unit; there are no user serviceable parts inside. Refer all servicing to qualified service personnel.

Power Source:

This soundbar is designed to operate in DC 20V = 2A.

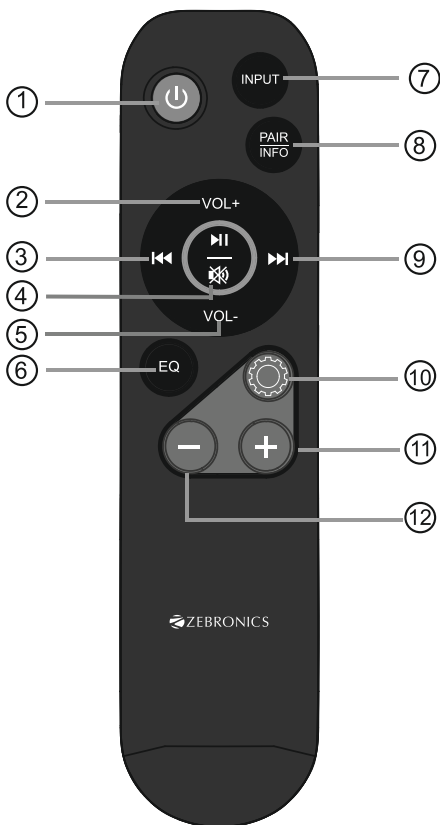
Product Diagram









1. LED Display
2. Power/Standby
3. Input
4. VOL -
5. VOL +
6. SUB OUT
7. SR

8. SL
9. DC IN
10. OPTICAL
11. USB
12. LINE IN (AUX)
13. TV(ARC)

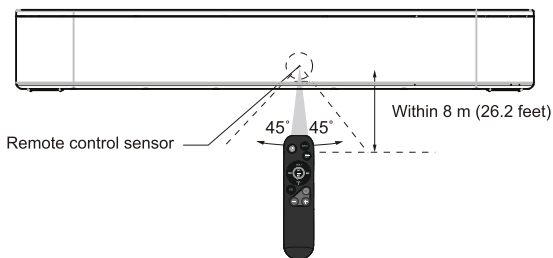
Remote Control



1. : Standby / Awake.
2. Volume+: Master volume Increase.
3.  Pre button: Previous track (Only work under USB & BT mode)
4. : Play/Pause (Only work under USB & BT mode)
5. : Press button for Mute or unmute on other modes.
6. Volume -: Master volume Decrease.
7. EQ: Press button from Music Mode Switch to Movie, Voice, Live, Sports EQ modes; press button more than 2 seconds for manufacturer defaults.
8. INPUT: Input mode (AUX/USB/TV (ARC)/OPT/BT). Press the button more than 2 seconds for checking software version.
9. PAIR: Press the button more than 2 seconds for pair or reconnect last paired device.
INFO: In short time press button for checking signals format on TV ARC/OPT mode base on device with Dolby decoder.
10.  Next button: Next track. (Only work under USB & BT mode of smartphone)
11.  : Setup. Press this button in a short time for setup to increasing / decreasing of bass / mid / treble / surround.
12. + : Under setup button to adjust increasing of bass / mid / treble / surround.
13. - : Under setup button to adjust decreasing of bass / mid / treble / surround

Operating range of the remote control

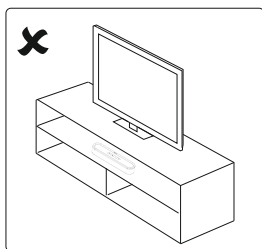
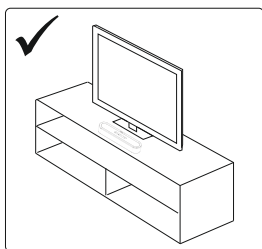
- When the unit is mounted on a wall, point the remote control at the remote control sensor on the bellowed panel. The provided Remote Control allows the unit to be operated from a distance.
- Even if the Remote Control is operated within the effective range 26.2 feet (8m), remote control operation may be impossible if there are any obstacles between the unit and the remote control.
- If the Remote Control is operated near other products which generate infrared rays, or if other remote control device using infra-red rays are used near the unit, it may operate incorrectly. Conversely, the other products may operate incorrectly.



Positioning the SoundBar

Place on a flat Surface

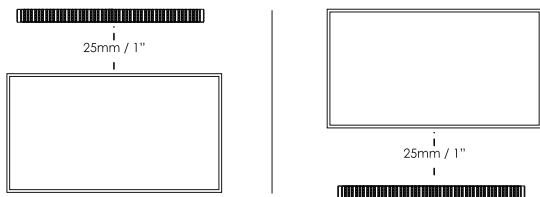
Place the soundbar horizontally on a flat surface such as a TV unit or shelves and align it centrally with the TV screen. Allow some space between the speaker and the wall. Don't place inside a cabinet or an a walled shelf. Follow this guidance for best sound output and good airflow around the soundbar.



Mount on the wall

WARNING : If you don't feel confident to correctly and securely wall-mount the sound bar, Seek the assistance of an experienced person of professional.

Install the speaker on a vertical, fast, reinforced area of wall. For plaster walls, it is recommended to screw into wall studs for greater security. For optimum performance, allow at least 25mm/1" distance between the sound bar and the TV.

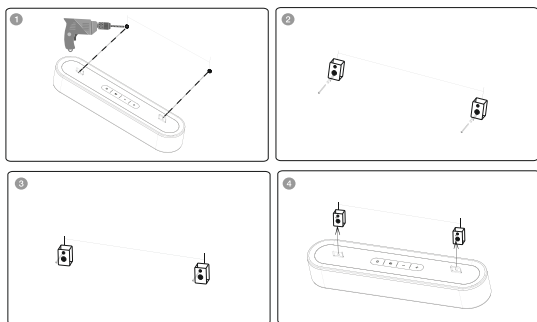


Follow below steps to mount the sound bar on the wall

1. Make 2 holes on the wall with distance the same as the wall bracket on the soundbar.
2. Put the plastic anchors onto the wall and secure the screws to the plastic clip, do not tighten the screws all the way, make sure to leave some space.

3. Attached the 2 EVA pads onto the wall mount bracket. This will make sure that there is enough room between the wall and the soundbar outlet, minimum 15mm.

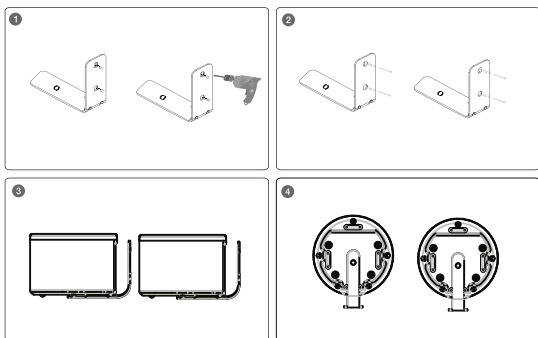
4. Once the screws securely fastened, hand the sound bar over by inserting the screws onto the wall mount bracket.



Follow below steps to mount the surround speaker on the wall

1. Open 4 holes on the wall. For the distance between the 2 holes, pls refer to the soundbar bracket wall mounting.
2. Fasten the plastic anchors in the 4 holes of the wall mount bracket.
3. Then attach the provided screws to the plastic anchors and tighten the screws to ensure that the wall mount bracket does not shaking.

4. Place the surround speakers on bracket with the corresponding holes at the bottom, then fix the provided screws in the bottom of the bracket and the holes of the surround speakers, then tighten the screws.



Using the Soundbar

- Before connecting the DC power cord, ensure you have completed all other connections.
- Risk of product damage! Ensure that the power supply voltage corresponds to the voltage printed on the back or the underside of the unit.
- Connect the mains cable to the DC IN of the unit and then into a mains socket.
- Power cord quantity and plug type vary by regions.

Basic Operation



1. Press the power button on either the remote control or the soundbar to turn on the soundbar.
2. Switch on the connected device (such as TV, playback devices, game console etc).
3. Press the input button on either the remote control or the soundbar to select your desired input source.

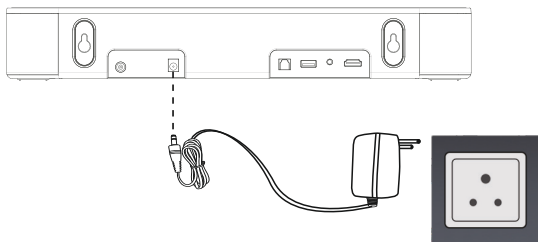
Input Source	Description
TV(ARC)	Audio from TV (via TV ARC port or OPTICAL jack)
Optical AUX	Sound from a connected device (via AUX port)
BLUETOOTH	Sound from a Bluetooth connected device
USB	Sound from a USB storage device

Note:

- *Keep the soundbar display mode to be the same as your selected input source. For example, if your selected input source is Bluetooth, you should see BT displayed on soundbar in the meanwhile.*

Power ON and OFF


1. Plug in the power cord with one side to DC IN on soundbar and the other side to an AC wall outlet (see the following diagram). When you connect the soundbar to the main socket, the unit will be in STANDBY mode, firstly it will display "--"
2. Switch on the soundbar by short-pressing  button on soundbar or on remote controller, the default input mode will automatically appear on display screen.
3. Press the  button on soundbar or on the remote controller to switch it off, and then disconnect the main plug from the main socket if you want to switch the unit off completely.



Auto Standby

1. The unit will automatically turn to standby mode when no audio input is received for 20 minutes.
2. If the TV or the external unit is disconnected, switch it off
 - To switch the unit off completely, remove the mains plug from the mains socket.
 - Please turn the unit off completely to save energy when not in use.
3. The screen will be turned off for around 10 seconds without any operation, when pressing the power buttons on the soundbar or on remote control or the using phone's volume increase or decrease, the display will be waken up again.

Select Modes

1. Press the  button repeatedly on the soundbar or press the INPUT button on the remote control to select the BT, AUX, OPTICAL, TV(ARC), USB mode. The selected mode will show on the display.
2. Below are input mode names appearing in the soundbar display:
 - BT - Bluetooth Pairing mode,
 - AUX - AUX mode,
 - OPT - Optical mode,
 - ARC - TV (ARC) mode,
 - USB - USB mode.


Playing Audio via BT Connection



Through Bluetooth, connect the Soundbar with your Bluetooth device (such as an iPad, iPhone, iPod touch, Android phone, or laptop), and then you can listen to the audio files stored on the device through your Soundbar

What you need

- A Bluetooth device which supports Bluetooth profile A2DP, AVRCP and with Bluetooth version as 5.4.
- The maximum operational range between the Soundbar and a Bluetooth device is approximately 8 meters (26.2 feet).

1. Turn on the soundbar system and short-press  button repeatedly on the unit or **INPUT** button on the remote control to switch the soundbar system to Bluetooth mode and LED display **BT** on the main soundbar will flicker in the Bluetooth pairing mode.

2. On the Bluetooth device, switch on Bluetooth, search for and select **ZEB-JukeBar 9300C** on your Bluetooth list to start connection (see the user manual of the Bluetooth device on how to enable Bluetooth).
3. Wait until you hear the voice prompt from the Soundbar. If the successfully connected, **BT** stops flickering and is displayed on the display panel.
4. Select and play audio files or music on your Bluetooth device.
 - During play, if a call is coming, music play is paused. Play resumes when the call ends.
 - If your Bluetooth device supports AVRCP profile, on the remote control you can press «/» to skip to a track, Press and hold PAIR button on the remote control for more than 2 seconds to disconnect paired bluetooth device or reconnect last disconnected bluetooth device.
5. You can use the volume buttons on the soundbar or on the remote controller to adjust the volume to your requirements
6. To exit Bluetooth, select other relevant input source.
 - When your switch back to Bluetooth mode, Bluetooth connection remains active.
7. Press the **VOL +/-** buttons to adjust the volume to your desired level.


Notes:

- *Having connection problems? Remove **ZEB-Juke bar 9300C** from your device's Bluetooth history and ensure it's less than 10 meters away. Then try pairing again. To get the best sound quality, make sure there is a clear line of sight between the connected device and your soundbar.*
- *If your pairing device or connected device is switched off or manual disconnected, the soundbar will automatically enter pairing mode.*
- *The music streaming may be interrupted by obstacles between the device and Soundbar, such as wall, metallic casing that covers the device, or other devices nearby that operate in the same frequency.*
- *If you want to connect your Soundbar with another Bluetooth device, press and hold Pair on the remote control to disconnect the currently connected Bluetooth device.*

Playing Audio via USB Port

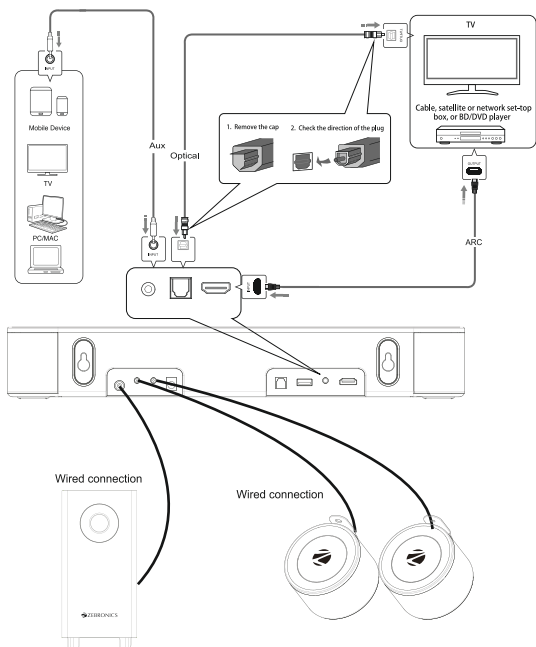
The soundbar automatically switches to USB input mode with the LED display **USB** when a USB flash drive is inserted.

1. Ensure that your USB flash drive contains Mp3, WAV or FLAC audio files (other file types not supported)
2. Connect the USB flash drive to the USB port on the main soundbar (or your own USB extension cable connected to the USB port); music will automatically play with LED display "00:00", when music is played on, the play time will be automatically displayed on the screen.
3. Press the **VOL +/-** buttons to adjust the volume to your desired level.
4. During playback:

 Start, pause or resume play.


 Skip to the previous or next track.

Connections



Playing Audio via Audio input(Aux)Connection

- Use a 3.5mm to 3.5mm audio cable to connect the PC, tablet, smartphone, TV's headphone socket to the AUX socket on the soundbar.
- Use a RCA to 3.5mm audio cable to connect the Blue Ray DVD Player / TV's audio output sockets to the AUX socket on the soundbar.

- Then short-press the  button on the soundbar or on the remote controller to switch to audio input mode with LED display lighting up **AUX**.
- In this mode, playback can only be controlled on your connected device

Note:

•For some computer, you may need to access the audio control panel to manually set the soundbar as above picture.

Optical Mode

Using an optical cable, connect the OPTICAL connector on your Soundbar (Optical digital input) to the OPTICAL OUT connector on the TV or other device. The TV or other device must have an optical digital output.

Proceed as follows:

- Connect the optical cable to the OPTICAL jack on the rear of the soundbar.
- Connect the other end of the optical cable to audio output jack on TV or other device.
- Start playing on the TV
- Press the source input button on the soundbar or remote control to activate the corresponding mode (the OPTICAL mode) to open optical digital input of your soundbar. After successfully connected, the LED display will show **OPT**. Operate your audio device directly for playback features.
- Press the **VOL +/-** buttons to adjust the volume to your desired level.

Note:

- *When connecting a device such as a TV/Set-top box/ DVD/ game console with optical cable, set the audio output mode of the device to Dolby or Auto mode (digital optical output).*
- *Do not bend the optical cable, otherwise the cable inside will be damaged.*

TV(ARC) Mode

- The soundbar supports TV(ARC) with audio return channel (ARC). You can hear the TV audio through your soundbar by using a single TV(ARC) cable. But on condition that your TV is ARC compliant.
- Using a high speed (ARC) cable, connect the TV(ARC) connector on the soundbar to the TV(ARC) connector on the TV. The TV(ARC) connector on the TV might be labeled differently. For details, see the user manual of your TV.

- When TV(ARC) is connected, TV sound setting in “sound output” mode should be set as <external Dolby or Auto mode>, in addition, digital audio output mode should be set as <automatic> or <decoded output as Dolby>. When the TV(ARC) cable is connected, the TV digital audio output is set as Dolby or Auto mode. Then start playing music on the TV.

- Press “INPUT” button on the remote control or “STANDBY” button on soundbar to select **ARC**-TV(ARC) mode. Different TV might be different setting, please refer to your TV User Manual.

- Use the volume buttons to adjust the volume to your requirements.

- You can also change the audio settings by using the relevant buttons on the remote control.

Note:

- *When connecting a device such as a TV/Set-top box/DVD/ game console with TV(ARC) cable, set the audio output mode of the device to Dolby or Auto mode <digital TV(ARC) output>.*
- *The TV is connected to a TV(ARC) port with sound bar. Different TVs might have different setup menus, but the operation approach is the same.*
- *If you need to connect set-up box meanwhile, please firstly connect the TV(ARC) connector and paired to the soundbar. Then connect the set-top box.*

Features:

Dolby Audio

Compact Soundbar with Triple drivers

5.1 CH surround sound

13.3 cm Subwoofer

Multi Connectivity (BT v5.3 | TV (ARC) | AUX | OPTICAL | USB)

Dual Rear Satellites

LED Display

Matte Finish

Wall Mountable

Remote control

Specifications

Driver Size

Subwoofer	: 13.33 cm
Soundbar	: (7.5 x 5.2)cm x 3
Satellites	: 5.08cm

Impedance

Subwoofer	: 4Ω
Soundbar	: 8Ω x 2
Satellites	: 8Ω

Frequency response : 50Hz-20KHz

S/N Ratio : ≥78dB

Separation : ≥48dB

File format support : Mp3

Line input : TV (ARC) | AUX |
Optical

Max supported
memory size (USB) : 32 GB

BT name : ZEB-JukeBar 9300C

BT version : v5.4

Product Dimension

Subwoofer	: 29.5 x 15x 18.5 cm (W x D x H)
Soundbar	: 40.5 x 9 x 6.2 cm (W x D x H)
Satellites	: 9 x 6 cm (Dia x H)

Net. Weight

Subwoofer	: 2.68 kg
Soundbar	: 1 kg
Satellites	: 320 g x 2
Total	: 4.3 kg

Package Content

Sound Bar	: 1 U
Subwoofer	: 1 U
Satellites	: 2 U
Input cable	: 1 U
Power Adapter	: 1 U
Remote Control	: 1 U
QR Code Guide	: 1 U
Wall Mount Fasteners	: 1 U

Troubleshooting

PROBLEM/TROUBLE	POSSIBLE CAUSE	SOLUTION
There is no sound output from sound bar.	Another input source is selected.	Select an appropriate input source.
	The mute function is activated.	Cancel the mute function.
	The volume of sound bar or TV/other device is adjusted too low.	Increase the volume level on sound bar or by remote control or on TV.
	The power cable of the unit is not connected properly.	Make sure that the power cable of the unit is connected to an AC wall outlet securely.
	Input jacks on a playback device are connected.	Connect the input jack on the sound bar and the output jack on the playback device.
	Signals that the sound bar cannot playback when being input.	When sound bar and TV or other devices are connected by an audio cable through TV (ARC) port output, Select the correct audio input and output. Make sure the digital audio output setting on the playback device to PCM format. Since the output format of our sound bar is PCM, if it is used, the decoding format of TV or other devices will be adjusted to PCM state.
The sound is distorted or echoed.	TV volume is not muted.	If you play audio from TV through the sound bar, make sure that the TV is muted.
The volume decreases when the unit is turned on.	The automatic volume adjustment function is activated. To prevent excessive loudness, the unit automatically controls its volume within a certain level when the unit is turned on.	Turn up the volume as required.
Noise is heard.	The sound bar is too close to another digital or high-frequency device.	Move those devices away from the sound bar.
The unit cannot be operated by using the remote control.	The unit is out of the operating range.	Use the remote control within the operating range.
	The batteries are weak.	Replace with new batteries.
	The remote control sensor of the sound bar is exposed to direct sunlight or strong lighting.	Adjust the lighting angle or reposition the sound bar. Make sure our product cannot be used in sunlight.
The TV cannot be operated by using the TV's remote control.	The unit is blocking the TV's remote control sensor.	Position the unit so that it does not obstruct the TV's remote control sensor.
A device cannot connect the sound bar or the unit cannot be connected to a BT device.	BT function of the device is not activated, not paired or connected correctly.	Restart the sound bar and try pairing again. You have not enabled the BT function of the device; see the user manual of the device on how to enable the function and correctly connected the device. The sound bar is already connected with another BT device. Disconnect the connected device, and then try again.
	BT is not selected as the input source.	Select BT as the input source.
	The unit is connected to a different BT device.	Un-pair the BT device that is currently connected and pair with the desired BT device.
	The unit is too far away from the BT device.	Move the BT device closer to this unit.
	A device emitting electromagnetic waves (such as a microwave oven, a wireless device and so on) may be placed nearby.	Do not use this unit near devices that emit electromagnetic waves.

PROBLEM/TROUBLE	POSSIBLE CAUSE	SOLUTION
A device cannot connect the sound bar or the unit cannot be connected to a BT device.	The BT device that you are using may not support the protocol.	Use a BT device that supports the protocol.
	The connection profile registered in the BT device may not be functioning correctly for some reason.	Delete the connection profile in the BT device and then connect the BT device to this unit.
Sound quality of audio play from a connected BT device is poor and connection is not stable.	The BT reception is poor.	Move the device closer to the sound bar, or remove any obstacle between the device and the sound bar.
No sound can be heard or sound breaks (BT mode)	The volume on the BT device may be too low.	Raise the volume on the BT device.
	BT is not selected as the input source.	Select the BT as the input source.
	Playback on the device has not been performed.	Perform playback on the device.
	The sound output on the BT device may not be set to this unit.	Select this unit as the output device on the BT device.
	The connection to the BT device was cut off.	Connect with the BT device one more time.
	The unit may be too far away from the BT device.	Move the BT device near this unit.
	A device emitting electromagnetic waves (such as a microwave oven, a wireless device and so on) may be placed nearby.	Do not use this unit near device that emit electromagnetic waves.
There is no sound from sound bar - TV (ARC) Mode	Incorrect HDMI cable is used causing no signal to be sent to soundbar. Incorrect input mode is selected.	1. Make sure that the user connected TV and sound bar by a 19-core HD ARC cable. 2. The sound bar and TV are connected through TV (ARC) port output; make sure that the TV is ARC compliant. 3. Set the TV to ARC (CEC). Set the audio output mode of TV to PCM format. (Or refer to your TV user manual)
There is no sound from sound bar (OPTICAL Mode)	OPTICAL cable might be damaged and no signal is received by the soundbar due to a failed connection and incorrect operation mode selected.	1. Replace the OPTICAL cable with a new one to connect. 2. Set your TV audio output to PCM format. (Pls refer to your TV user manual)
There is no sound from sound bar (USB mode)	USB file type is not support & Sound bar doesn't switch to USB input mode automatically when USB is inserted.	Make sure that USB flash drive contains MP3 files because other file types are not supported. Switch the input mode once again, then playback again.
Disconnected between subwoofer and sound bar	Connection is not correct between subwoofer and sound bar.	1. Turn off sound bar and subwoofer by removing the AC plug from the socket. 2. Make sure that sound bar and subwoofer are connected to the electricity power at the same time, and switch on sound bar and subwoofer again. 3. Press and hold the subwoofer's rear plate WPS button to reset the connection, so that the sound bar and subwoofer can be reconnected again.

ISO 9001:2015 Certified Company
www.zebronics.com