



Soundbar
NEB JUKE BAR
9551



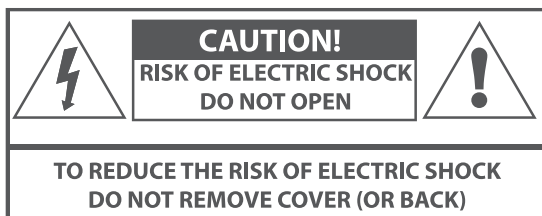
User Manual

www.zebronics.com

Important Safety Instruction

Thank you for purchasing the **ZEB-JUKE BAR 9551** Soundbar. Please read this user manual carefully and keep for future reference.

Warning



Caution:

- To reduce the risk of electric shock, do not dismantle the product and do not expose the unit to rain or moisture. No user-serviceable parts inside.
- Refer servicing to qualified personnel only.



The lightning flash within an equilateral triangle is intended to alert you to the presence of uninsulated dangerous voltage within the product's enclosure that may be of sufficient magnitude to constitute an electric shock to a person or persons.



Important! This symbol alerts you to read and observe important warnings and instructions on the unit or in this manual.

Notice:

1. To prevent possible hearing damage, do not listen at high volume levels for long time periods or a sudden high volume level.
2. Never use the device unsupervised! Switch off the device whenever you are not using it, even if not using it only for a short while.
3. The device is not intended to be operated by means of an external timer or separate remote control system.
4. If the supply cord is damaged, it must be replaced by the manufacturer, its service agent or similarly qualified persons in order to avoid a hazard.



5. Before operating this system, check the voltage of this system to see if it is identical to the voltage of your local power supply.
6. The unit should not be impeded by covering the ventilation opening with items such as newspaper, table-cloths, curtains etc. Make sure that there are at least 20 cm of space above and at least 5 cm of space on each side of the unit.
7. The unit must not be exposed to dripping or splashing liquid, no objects filled with liquids such as vases, should be placed on the unit.
8. To prevent fire or shock hazard, do not expose this equipment to direct heat, rain, moisture or dust.
9. Do not position this unit near any water sources e.g. taps, bathtubs, washing machines or swimming pools. Ensure that you place the unit on a dry, stable surface.
10. Do not place this soundbar close to a strong magnetic field.
11. Do not place the soundbar on a amplifier or receiver.
12. Do not place this soundbar in a damp area as the moisture will affect the life of electric components.
13. Do not attempt to clean the soundbar with chemical solvents as this might damage the finish. Wipe with a clean, dry or slightly damp cloth.
14. When removing the power plug from the

power socket, always pull directly on the plug, never pull on the cord.

15. Depending on the electromagnetic waves used by a television broadcast, if a TV is turned on near this unit while it is also on, lines might appear on the LED TV. Neither this unit nor the TV is malfunctioning. If you see such lines, keep this unit well away from the TV set.

16. The mains plug is used to disconnect the device, the disconnected device should remain readily operable.

Preparation for Use

Unpacking and Set Up

- Remove the Sound bar from the carton and remove all packing material from the Sound bar. Save the packing material, if possible, in case the Sound bar ever needs to be serviced or transported.
- The original carton and packing material is the only safe way to pack your Sound bar to protect it from damage in transit.
- Remove any descriptive labels or stickers on the front or top of the cabinet. Do not remove any labels or stickers from the back or bottom of the cabinet.
- Place your Sound bar on a level surface such as a table, desk or shelf, convenient to an AC power socket, out of direct sunlight, and away from sources of excess heat, dirt, dust, moisture, humidity, or vibration.
- Unwind the Line cord connecting the AC adapter and extend it to its full length.

Protect Your Furniture

This model is equipped with non-skid rubber 'feet' to prevent the product from moving when you operate the controls. These 'feet' are made from non-migrating rubber material specially formulated to avoid leaving any marks or stains on your furniture. However certain types of oil based furniture

polishes, wood preservatives, or cleaning sprays may cause the rubber 'feet' to soften, and leave marks or a rubber residue on the furniture. To prevent any damage to your furniture we strongly recommend that you purchase small self-adhesive felt pads, available at hardware stores and home improvement center everywhere, and apply these pads to the bottom of the rubber 'feet' before you place the unit.

Important Notes

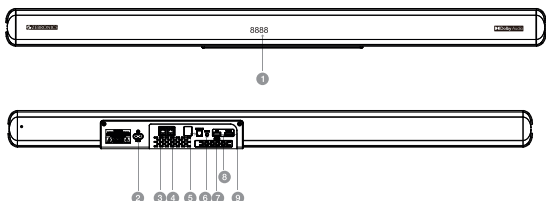
- Safety and operating instruction manual should be retained for future reference.
- Before turning on the power for the first time, make sure the sound bar is plugged to power socket.
- For safety reasons, do not remove any covers or attempt to gain access to the inside of the product. Refer any servicing to qualified personnel.
- Do not attempt to remove any screws, or open the casing of the unit; there are no user serviceable parts inside. Refer all servicing to qualified service personnel.

Power Source:

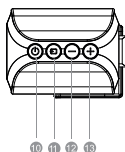
This soundbar is designed to operate in AC 220-240V 50/60Hz.

Product Representation

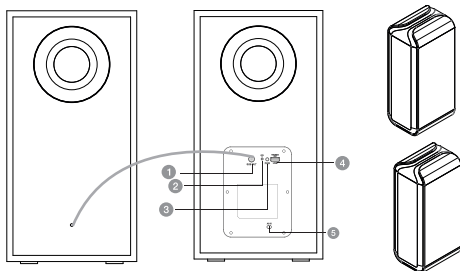
Sound Bar



- | | |
|-------------------|----------|
| 1. LED DISPLAY | 11.INPUT |
| 2. AC IN | 12.VOL - |
| 3. SR | 13.VOL + |
| 4. SL | |
| 5. OPTICAL | |
| 6. LINE IN (AUX) | |
| 7. FOR UPDATE | |
| 8. USB | |
| 9. TV ARC | |
| 10. POWER/STANDBY | |

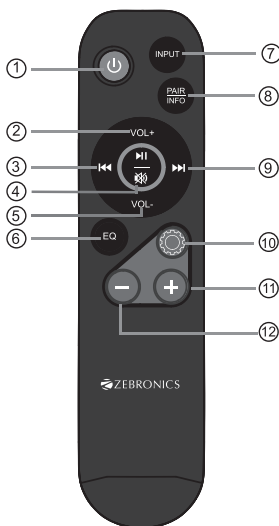


Sub-Woofer



1. SUBOUT
2. LED indicator: It indicates pairing between the soundbar and the subwoofer.
3. PAIR: It automatically pairs the soundbar with subwoofer.
4. USB Port (CAN'T PLAY MP3 MUSIC, FOR SOFTWARE UPGRADE ONLY)
5. AC IN


Remote Control



1. : Standby mode for power on/off.
2. Volume+ : Master Volume Increase
3. Pre button : Previous Track (Only work under USB & BT Mode).
4. : Play/Pause (Only work under USB and BT mode)
 : Press to Mute or unmute on other modes.
5. Volume- : Master Volume Decrease.
6. EQ : Press to select Music, Movie, News and Sport EQ modes; Press and hold button for manufacturer defaults.
7. INPUT : Press to select AUX / USB / TV (ARC) / Optical IN / BT input mode.
8. PAIR/INFO: On BT mode, press and hold button more than 2 seconds for BT device pairing or reconnect last paired BT device; On TV(ARC) and Optical mode,

press to check signal format bases on device with Dolby decoder.

9. Next button : Next track. (Only work under USB & BT mode of smartphone)

10.  : Setup, press the button to switch to adjust increasing/decreasing of Bass, Treble, Center, Surround level.

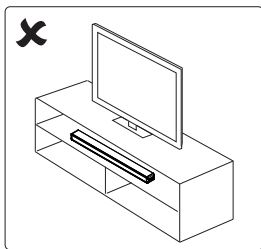
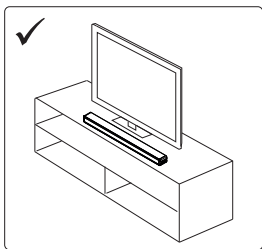
11. + : Under setup button to adjust increasing of Bass, Treble, Center, Surround level.

12. - : Under setup button to adjust decreasing of Bass, Treble, Center, Surround level.

Positioning the Sound Bar

Place on a flat Surface

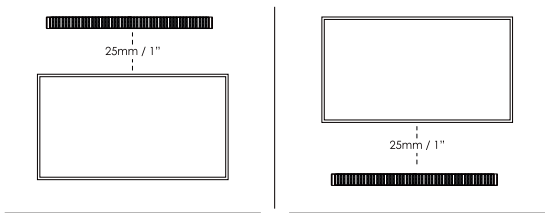
Place the sound bar horizontally on a flat surface such as a TV unit or shelves and align it centrally with the TV screen. Allow some space between the speaker and the wall. Don't place inside a cabinet or on a walled shelf. Follow this steps for best sound output and good airflow around the sound bar.



Mount on the wall

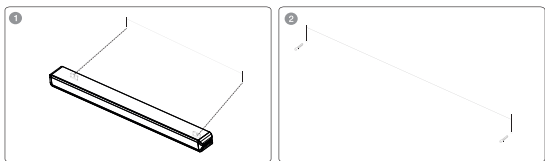
WARNING : If you don't feel confident to correctly and securely wall-mount the sound bar, Seek the assistance of an experienced person or professional.

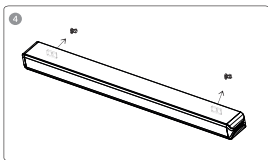
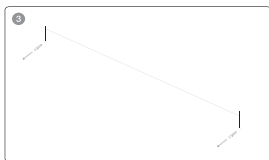
Install the speaker on a vertical, fast, reinforced area of wall. For plaster walls, it is recommended to screw into wall studs for greater security. For optimum performance, allow at least 25mm/1" distance between the sound bar and the TV.



Follow below steps to mount the sound bar on the wall

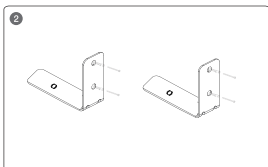
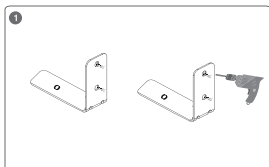
1. Make 2 holes on the wall with distance same as the wall bracket on the soundbar.
2. Put the plastic anchors onto the wall and secure the screws to the plastic clip, do not tighten the screws all the way make sure leave some space.
3. Attached the 2 EVA pads onto the wall mount bracket. This will make sure that there is enough room between the wall and the soundbar outlet, minimum 15mm.
4. Once the screws securely fastened, hang the sound bar over by inserting the screws onto the wall mount bracket.

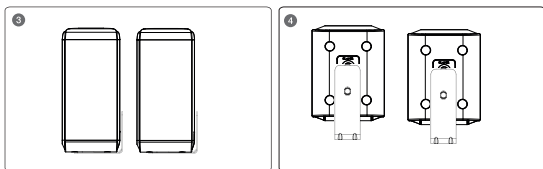




Follow below steps to mount the surround speaker on the wall

1. Make 4 holes on the wall. For the distance between the 2 holes, please refer to the soundbar bracket wall mounting.
2. Fasten the plastic anchors in the 4 holes of the wall mount bracket.
3. Then attach the provided screws to the plastic anchors and tighten the screws to ensure that the wall mount bracket does not shaking.
4. Place the surround speakers on bracket with the corresponding holes at the bottom, then fix the provided screws in the bottom of the bracket and the holes of the surround speakers, then tighten the screws.





Pair up with the subwoofer

Plug the soundbar and the subwoofer into the mains sockets at the same time

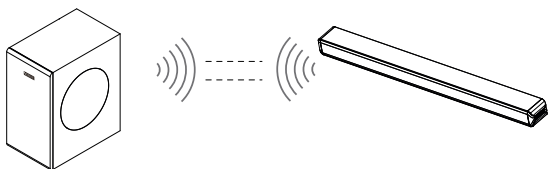
1. Press "STAND BY", to turn the soundbar on after it has been connected to the AC. Then press "INPUT" to select Bluetooth (BT) as the input mode. This will cause the soundbar to enter into pairing mode with the wireless subwoofer.

2. Switch the subwoofer on. The blue LED will blink slowly indicating the unit has power but needs to be paired with the soundbar. Press and hold the PAIR (AUTO PAIR BUTTON), the blue LED will flash quickly indicating they are now in pairing mode.

3. After about 20-30 seconds, the blue LED of the subwoofer will stop flashing and remain blue to confirm a successful pairing with the soundbar.

4. The units will now be able to pair automatically after this initial successful pair, even if they are switched off and on.

5. If you want to pair your ZEB-JUKE BAR 9551 wireless subwoofer with another ZEB-JUKE BAR 9551 soundbar, please repeat step 1 to step 4 above. Ensure the soundbar you want to pair the subwoofer with is turned on and in range and any other pairing devices are switched off or on standby.



USAGE INSTRUCTIONS

Setting the Soundbar

1. Plug in the power cord and the display will light up (Standby mode)
2. Switch on the sound bar by pressing **"STANDBY"** button on sound bar or on remote controller. After switching on, the default input mode will appear on display.
3. Input modes can be changed by pressing the **"INPUT"** button on sound bar or on remote controller.
4. Below are input mode names appearing in the soundbar display:

bt - BT Pairing mode

AUX - AUX mode

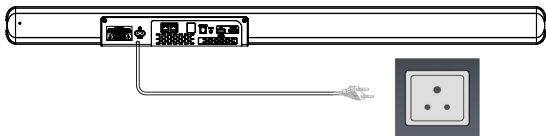
OPT - Optical mode

Hd - ARC mode

USB - USB mode

Powering On/Off

1. Plug the power cord of sound bar into a power socket, it will automatically enter standby mode.
2. Short-press the **"STANDBY"** button on sound bar or on remote controller to turn on the sound bar.
3. To turn off, press and hold the **"STANDBY"** button for 2 seconds, then unplug from power socket.



Playing Audio via BT Connection

- 1 Turn on the sound bar and then short-press the **"INPUT"** button on sound bar or remote controller to switch it to BT mode and LED display on the sound bar will flicker in the BT pairing mode.
2. Activate the pairing function on your phone or other compatible device and select **"JUKE BAR 9551"** by BT connection.
3. When successfully paired, you will hear a tone and LED display will turn on "bt" and stop flickering. Then music that you selected can be played on the sound bar.
4. The remote controller includes BT mode playback controls.



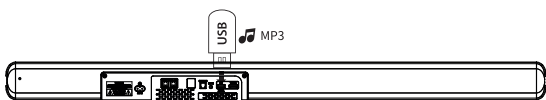
Notes:

- If your pairing device switched off or manual disconnected, the sound bar will automatically enter pairing mode.
- If the connected device is switched off or manual disconnected, the sound bar will automatically pair to last connected device once you re-enter wireless range (10 meters).

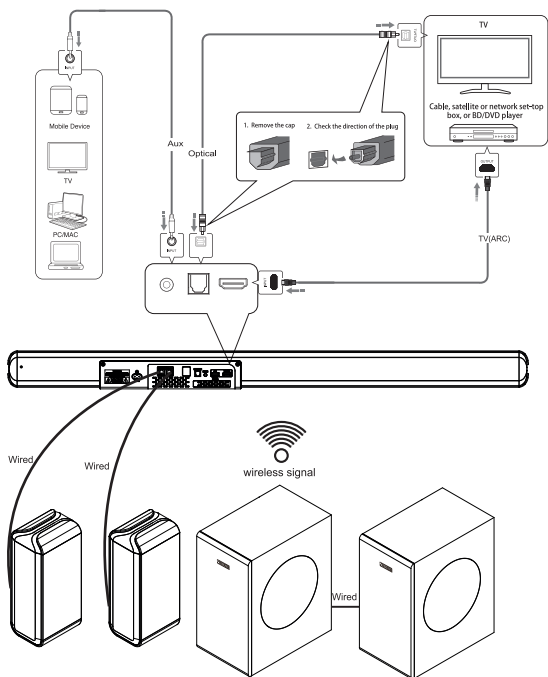
Playing Audio via USB Port

The sound bar automatically switches to USB input mode with the LED display “USB” when a USB flash drive is inserted (this mode isn't selectable on the sound bar or remote control unless a USB flash drive is connected).

1. Ensure that your USB flash drive contains MP3 audio files (other file types not supported)
2. Connect the USB flash drive to the USB port on the sound bar (or your own USB extension cable connected to the USB port); music will automatically play
3. The remote control includes USB input mode playback controls



Using the Soundbar



Audio Input (AUX) Connection

1. Firstly connect the soundbar to your PC, laptop, smart-phone, TV, or other audio devices by using an AUX cable provided. Make sure that these devices have both AUX IN and AUX OUT terminals.
2. Then press the STANDBY button or INPUT button on remote control to switch the soundbar to Aux mode, once the soundbar is connected in Aux mode, the screen will display "AU". And the music on your connected device will play. Playback can only be controlled on your connected device.

TV (ARC) Mode

1. The soundbar supports TV (ARC) with audio return channel (ARC). You can hear the TV audio through your soundbar by using a single TV (ARC) cable. But on condition that your TV is ARC compliant.
2. Using a high speed TV (ARC) cable, connect the TV (ARC) connector on the soundbar to the TV (ARC) connector on the TV. The TV (ARC) connector on the TV might be labeled differently. For details, see the user manual of your TV.
3. When TV (ARC) is connected, TV sound setting in "sound output" mode should be set as <external Dolby or Auto mode>, in addition, digital audio output mode should be set as <automatic> or <decoded output as Dolby>.

When the TV (ARC) cable is connected, the TV digital audio output is set as Dolby or Auto mode. Then start playing music on the TV.

4. Press "INPUT" button on the remote control or "STANDBY" button on soundbar to select Hd - TV (ARC) mode. Different TV might be different setting, please refer to your TV User Manual.

5. Use the volume buttons to adjust the volume to your requirements.

6. You can also change the audio settings by using the relevant buttons on the remote control.

Note:

1. When connecting a device such as a TV/Set-top box/DVD/game console with TV (ARC) cable, set the audio output mode of the device to Dolby or Auto mode <digital TV (ARC) output>.

2. The TV is connected to a TV (ARC) port with sound bar. Different TVs might have different setup menus, but the operation approach is the same.

3. If needs to connect set-up box meanwhile, please firstly connect the TV (ARC) connector and paired to the soundbar. Then connect the set-top box.

Optical Mode

Remove the cap of optical cable (keep the cap for the future use); check the direction of the plug. Connect the soundbar and TV with the optical cable.

Use this mode to play music from a TV with optical digital output on the sound bar. In TV sound settings, select the soundbar optical connection (output for audio). When the optical cable is connected, the TV audio output is set to Dolby or Auto mode.

The TV must have an optical digital output. Use the optical cable to make the connection as follows:

1. Connect the optical cable to the optical digital output of your TV.
2. Connect the optical cable to the optical digital input of your soundbar.
3. Switch on the TV set and the soundbar. Set the connected TV to "Passthrough or Auto mode".
4. Start playing on the TV.
5. Press "INPUT" button on the remote control or "STANDBY" button on the soundbar to select OPT- OPTICAL mode.
6. Use the volume buttons to adjust the volume to your requirements.
7. You can also change the audio settings by using the relevant buttons on the remote control.

Note: 1. When connecting a device such as a TV/Set-top box/ DVD/ game console with optical cable, set the audio output mode of the device to Passthrough or Auto mode (digital optical output). 2. Do not bend the optical cable, otherwise the cable inside will be damaged.

Features:

- BTv5.3 | TV (ARC) | Optical IN | USB | AUX
- Dolby Audio
- Dual Wireless Subwoofer
- 5.2 CH Surround Sound
- Dual Rear Satellites
- Soundbar with 3 Drivers
- Wall Mountable
- LED Display
- Remote Control

Specifications

Output Power

| | |
|------------|------------|
| Subwoofer | : 125W x 2 |
| Sound Bar | : 75W x 3 |
| Satellites | : 75W x 2 |
| Total | : 625W |

Driver Size

| | |
|------------|---------------------|
| Subwoofers | : 16.51 cm x 2 |
| Sound Bar | : (9cm x 5.8cm) x 3 |
| Satellites | : (5.8cm x 9cm) x 2 |

Impedance

| | |
|------------|----------|
| Subwoofer | : 3Ω x 2 |
| Sound Bar | : 6Ω x 3 |
| Satellites | : 6Ω x 2 |

Frequency Response : 35Hz-20kHz

| | |
|---------------------------------|----------------------------------|
| S/N Ratio | : $\geq 75\text{dB}$ |
| Separation | : $\geq 45\text{dB}$ |
| File Format Support | : Mp3 |
| Line Input | : 3.5mm, Optical IN & HDMI (ARC) |
| Max Supported Memory Size (USB) | : 32 GB |
| BT Name | : JUKE BAR 9551 |
| BT Version | : 5.3 |
| Product Dimension (W x D x H) | |
| Subwoofer | : 19 x 30.6 x 36.7 cm |
| Sound Bar | : 96 x 8.8 x 6.7 cm |
| Satellite | : 6.7 x 8.8 x 19 cm |
| Net. Weight | |
| Subwoofer | : 4.4 kg x 2 |
| Sound Bar | : 2.4 kg |
| Satellite | : 545g x 2 |
| Total | : 12.4 kg |

Troubleshooting

| PROBLEM/TROUBLE | POSSIBLE CAUSE | SOLUTION |
|--|---|--|
| There is no sound output from sound bar. | Another input source is selected. | Select an appropriate input source. |
| | The mute function is activated. | Cancel the mute function. |
| | The volume of sound bar or TV/other device is adjusted too low. | Increase the volume level on sound bar or by remote control or on TV. |
| | The power cable of the unit is not connected properly. | Make sure that the power cable of the unit is connected to an AC wall outlet securely. |
| | Input jacks on a playback device are connected. | Connect the input jack on the sound bar and the output jack on the playback device. |
| | Signals that the sound bar cannot playback when being input. | When sound bar and TV or other devices are connected by an audio cable through TV (ARC) port output, Select the correct audio input and output. Make sure the digital audio output setting on the playback device to PCM format. Since the output format of our sound bar is PCM, if it is used, the decoding format of TV or other devices will be adjusted to PCM state. |
| The sound is distorted or echoed. | TV volume is not muted. | If you play audio from TV through the sound bar, make sure that the TV is muted. |
| The volume decreases when the unit is turned on. | The automatic volume adjustment function is activated. To prevent excessive loudness, the unit automatically controls its volume within a certain level when the unit is turned on. | Turn up the volume as required. |
| Noise is heard. | The sound bar is too close to another digital or high-frequency device. | Move those devices away from the sound bar. |
| The unit cannot be operated by using the remote control. | The unit is out of the operating range. | Use the remote control within the operating range. |
| | The batteries are weak. | Replace with new batteries. |
| | The remote control sensor of the sound bar is exposed to direct sunlight or strong lighting. | Adjust the lighting angle or reposition the sound bar. Make sure our product cannot be used in sunlight. |
| The TV cannot be operated by using the TV's remote control. | The unit is blocking the TV's remote control sensor. | Position the unit so that it does not obstruct the TV's remote control sensor. |
| A device cannot connect the sound bar or the unit cannot be connected to a BT device. | BT function of the device is not activated, not paired or connected correctly. | Restart the sound bar and try pairing again. You have not enabled the BT function of the device; see the user manual of the device on how to enable the function and correctly connected the device. The sound bar is already connected with another BT device. Disconnect the connected device, and then try again. |
| | BT is not selected as the input source. | Select BT as the input source. |
| | The unit is connected to a different BT device. | Un-pair the BT device that is currently connected and pair with the desired BT device. |
| | The unit is too far away from the BT device. | Move the BT device closer to this unit. |
| | A device emitting electromagnetic waves (such as a microwave oven, a wireless device and so on) may be placed nearby. | Do not use this unit near devices that emit electromagnetic waves. |
| | The BT device that you are using may not support the protocol. | Use a BT device that supports the protocol. |
| | The connection profile registered in the BT device may not be functioning correctly for some reason. | Delete the connection profile in the BT device and then connect the BT device to this unit. |
| Sound quality of audio play from a connected BT device is poor and connection is not stable. | The BT reception is poor. | Move the device closer to the sound bar, or remove any obstacle between the device and the sound bar. |
| No sound can be heard or sound breaks (BT mode) | The volume on the BT device may be too low. | Raise the volume on the BT device. |
| | BT is not selected as the input source. | Select the BT as the input source. |
| | Playback on the device has not been performed. | Perform playback on the device. |
| | The sound output on the BT device may not be set to this unit. | Select this unit as the output device on the BT device. |
| | The connection to the BT device was cut off. | Connect with the BT device one more time. |
| | The unit may be too far away from the BT device. | Move the BT device near this unit. |

| PROBLEM/TROUBLE | POSSIBLE CAUSE | SOLUTION |
|--|--|---|
| | A device emitting electromagnetic waves (such as a microwave oven, a wireless device and so on) may be placed nearby. | Do not use this unit near device that emit electromagnetic waves. |
| There is no sound from sound bar - TV (ARC) Mode | Incorrect HDMI cable is used causing no signal to be sent to soundbar. Incorrect input mode is selected. | 1. Make sure that the user connected TV and sound bar by a 19-core HD ARC cable. 2. The sound bar and TV are connected through TV (ARC) port output; make sure that the TV is ARC compliant. 3. Set the TV to ARC (CEC). Set the audio output mode of TV to PCM format. (Or refer to your TV user manual) |
| There is no sound from sound bar (OPTICAL Mode) | OPTICAL cable might be damaged and no signal is received by the soundbar due to a failed connection and incorrect operation mode selected. | 1. Replace the OPTICAL cable with a new one to connect. 2. Set your TV audio output to PCM format. (Pls refer to your TV user manual) |
| There is no sound from sound bar (USB mode) | USB file type is not support & Sound bar doesn't switch to USB input mode automatically when USB is inserted. | Make sure that USB flash drive contains MP3 files because other file types are not supported. Switch the input mode once again, then playback again. |
| Disconnected between subwoofer and sound bar | Connection is not correct between subwoofer and sound bar. | 1. Turn off sound bar and subwoofer by removing the AC plug from the socket. 2. Make sure that sound bar and subwoofer are connected to the electricity power at the same time, and switch on sound bar and subwoofer again. 3. Press and hold the subwoofer's rear plate WPS button to reset the connection, so that the sound bar and subwoofer can be reconnected again. |

ISO 9001:2015 Certified Company
www.zebronics.com

