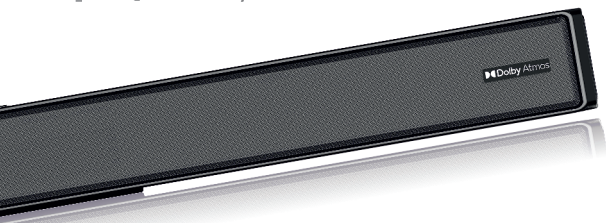




sound bar

**Juke Bar**  
**9750**  
Pro Dolby Atmos



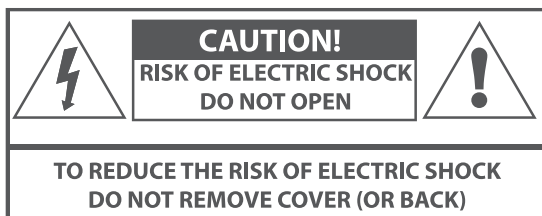
**User Manual**

[www.zebronics.com](http://www.zebronics.com)

## Important Safety Instruction

Thank you for purchasing the **ZEB-JUKE BAR 9750 PRO DOLBY ATMOS** Soundbar. Please read this user manual carefully and keep for future reference.

### Warning



### Caution:

- To reduce the risk of electric shock, do not dismantle the product and do not expose the apparatus to rain or moisture. No user-serviceable parts inside.
- Refer servicing to qualified personnel only.



The lightning flash within an equilateral triangle is intended to alert you to the presence of uninsulated dangerous voltage within the product's enclosure that may be of sufficient magnitude to constitute an electric shock to a person or persons.



Important! This symbol alerts you to read and observe important warnings and instructions on the unit or in this manual.

### **Notice:**

This appliance is not intended for use by persons (including children) with reduced physical sensory or mental capabilities, or lack of experience and knowledge, unless they have been given supervision or instruction concerning use of the appliance by a person responsible for their safety.

Children should be supervised to ensure that they do not play with the appliance.

1. To prevent possible hearing damage, do not listen at high volume levels for long time periods or a sudden high volume level.



2. Never use the device unsupervised! Switch off the device whenever you are not using it, even if not using it only for a short while.
3. The appliance is not intended to be operated by means of an external timer or separate remote control system.
4. If the supply cord is damaged, it must be replaced by the manufacturer, its service agent or similarly qualified persons in order to avoid a hazard.
5. Before operating this system, check the voltage of this system to see if it is identical to the voltage of your local power supply.
6. The unit should not be impeded by covering the ventilation opening with items such as newspaper, table-cloths, curtains etc. Make sure that there are at least 20 cm of space above and at least 5 cm of space on each side of the unit.
7. The apparatus must not be exposed to dripping or splashing liquid, no objects filled with liquids such as vases, should be placed on the apparatus.
8. To prevent fire or shock hazard, do not expose this equipment to direct heat, rain, moisture or dust.
9. Do not position this unit near any water sources e.g. taps, bathtubs, washing machines or swimming pools. Ensure that you place the unit on a dry, stable surface.



10. Do not place this unit close to a strong magnetic field.
11. Do not place the unit on a amplifier or receiver.
12. Do not place this unit in a damp area as the moisture will affect the life of electric components.
13. Do not attempt to clean the unit with chemical solvents as this might damage the finish. Wipe with a clean, dry or slightly damp cloth.
14. When removing the power plug from the wall outlet, always pull directly on the plug, never pull on the cord.
15. Depending on the electromagnetic waves used by a television broadcast, if a TV is turned on near this unit while it is also on, lines might appear on the LED TV. Neither this unit nor the TV is malfunctioning. If you see such lines, keep this unit well away from the TV set.
16. The mains plug is used to disconnect the device, the disconnected device should remain readily operable.

### **Important Safety Instructions**

1. Read, keep and follow all instructions. Heed all warnings.
2. Avoid dropping. Do not disassemble.
3. Do not use any corrosive cleaner/oil to clean. Clean only with dry cloth.

4. Do not submerge in water; do not use this apparatus near water. The product should not be exposed to dripping or splashing water.
5. Do not block any ventilation openings. Install it in accordance with the manufacturer's instructions.
6. Avoid extreme temperatures. Do not install near any heat sources such as radiators, heaters, stoves, or other apparatus (including amplifiers) that produce heat.
7. Protect the power cord from being walked on or pinched particularly at plugs, convenience receptacles or at the point where they exit from the apparatus.
8. Only use original or certified cables or attachments/accessories specified by manufacturer
9. Do not use the device outdoors during thunderstorms, Unplug this apparatus during lightning storms or when unused for long periods of time.
10. Refer all servicing to qualified service personal. Servicing is required when the apparatus has been damaged in any way, for example, when the power-supply cord or plug is damaged, liquid has been spilled or objects have fallen into the apparatus, the apparatus has been exposed to rain or moisture, does not operate normally, or has been dropped.
11. The AC plug is used to disconnect the device; the disconnected device should remain

readily operable. In order to disconnect the apparatus from the AC power completely, the AC plug must be removed from the AC outlet completely.

## **Preparation for Use**

### **Unpacking and Set Up**

- Remove the Sound bar from the carton and remove all packing material from the Sound bar. Save the packing material, if possible, in case the Sound bar ever needs to be serviced or transported. The original carton and packing material is the only safe way to pack your Sound bar to protect it from damage in transit.
- Remove any descriptive labels or stickers on the front or top of the cabinet. Do not remove any labels or stickers from the back or bottom of the cabinet.
- Place your Sound bar on a level surface such as a table, desk or shelf, convenient to an AC outlet, out of direct sunlight, and away from sources of excess heat, dirt, dust, moisture, humidity, or vibration.
- Unwind the Line cord connecting the AC adapter and extend it to its full length.

### **Protect Your Furniture**

This model is equipped with non-skid rubber 'feet' to prevent the product from

moving when you operate the controls. These 'feet' are made from non-migrating rubber material specially formulated to avoid leaving any marks or stains on your furniture. However certain types of oil based furniture polishes, wood preservatives, or cleaning sprays may cause the rubber 'feet' to soften, and leave marks or a rubber residue on the furniture. To prevent any damage to your furniture we strongly recommend that you purchase small self-adhesive felt pads, available at hardware stores and home improvement center everywhere, and apply these pads to the bottom of the rubber 'feet' before you place the unit.

### **Important Notes**

- Safety and operating instruction manual should be retained for future reference.
- The apparatus should not be exposed to dripping, splashing or placed in a humid atmosphere such as a bathroom.
- Do not install the product in the following areas:
  - Places exposed to direct sunlight or close to radiators.
  - On top of other stereo equipment that radiate too much heat -Blocking ventilation or in a dusty area.
  - Areas where there is constant vibration.

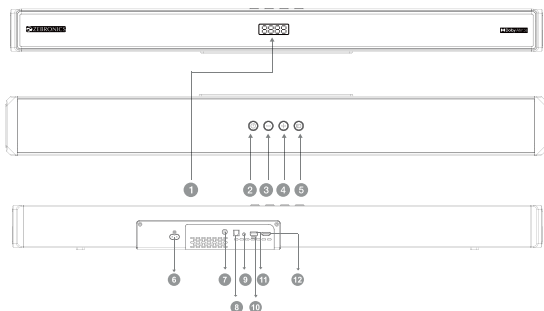
- Humid or moist places.
- Do not place near candles or other flames.
- Operate the product only as instructed in this manual.
- Before turning on the power for the first time, make sure the sound bar is plugged to power outlet.
- For safety reasons, do not remove any covers or attempt to gain access to the inside of the product. Refer any servicing to qualified personnel.
- Do not attempt to remove any screws, or open the casing of the unit; there are no user serviceable parts inside. Refer all servicing to qualified service personnel.

**Power Source:**

This soundbar is designed to operate in AC 220-240V ~ 50/60Hz.

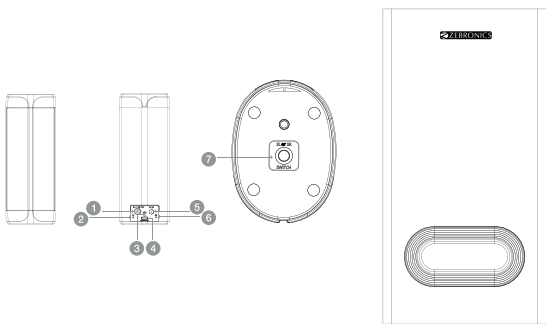
# Product Representation

## Sound Bar



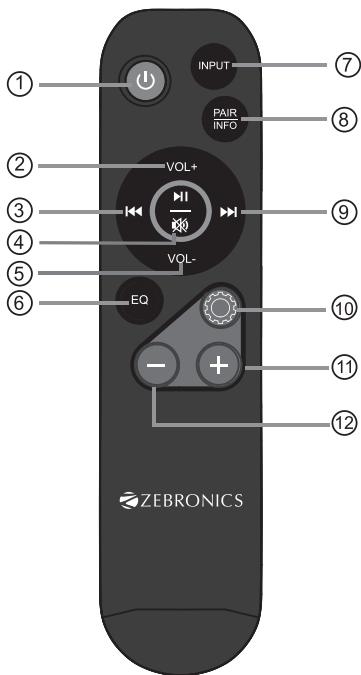
- 1 DISPLAY PANEL.
- 2 Standby: standby mode to power on/off.
- 3 Volume: Decrease the volume.
- 4 Volume: Increase the volume.
- 5 INPUT: Select an input source for the Soundbar.
- 6 AC IN: Connect to power supply.
- 7 WOOFER PORT: Connect to the wired subwoofer.
- 8 OPTICAL: Connect to an optical audio output on TV or digital devices.
- 9 AUX: Auxiliary Audio input from Mp3/Phone/set-top box devices.
- 10 FOR UPDATE: Upgrade software of this product.
- 11 USB: Connect the USB flash drive to the USB port on the sound bar.
- 12 HDMI(e-ARC): Connect to HDMI (e-ARC)

## Sub-Woofer and Rear Satellite














1. Wireless Surround SL or SR out (wireless surround Channel is fixed, when end user's power socket position isn't matched, please press switch button from bottom of surround speaker to exchange channel position.)
2. Wireless surround SL channel LED light
3. LED indicator: Indicates the pairing between soundbar and wireless surround speaker
4. FOR UPDATE ONLY (FOR SOFTWARE UPGRADE ONLY)
5. DC IN
6. Wireless surround SR channel LED light
7. Surround channel (SL OR SR) switch button (wireless surround Channel is fixed, when end user's power socket position isn't matched, pls press switch button from bottom of surround speaker to exchange channel position.)

# Remote Control

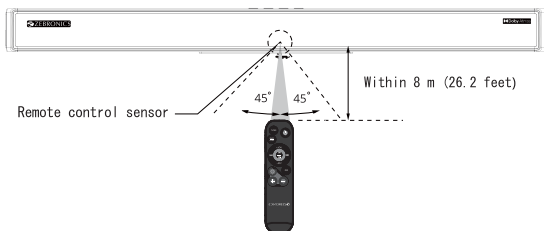




1.  : Standby mode for power on/off.
2. Volume+: Master volume up.
3.  Pre button: Previous track (Only work under USB & BT mode of smartphone)
4. : Long press  button Play/Pause (Only work under USB & BT mode of smartphone);
5.  :Short Press  button for Mute or unmute on other modes.
6. Volume - : Master volume Down
7. EQ, short press button from Movie / Music / News / Sports mode.  
long press button more than 4 seconds for reset to manufacturer defaults.
8. INPUT: Input mode(USB/AUX/TV(eARC)/OP/BT);  
long press the button more than 2 seconds for checking software version.
9. PAIR: Long press  button more than 2 seconds for pair or reconnect last paired device.  
INFO: short press  button for checking signals format on TV eARC/OPT mode base on device with Dolby decoder.
10. Next button: Next track. (Only work under USB & BT mode of smartphone)
11.  : Setup,press the button to switch to adjust increasing/decreasing of bass/mid/treble/surround.
12.  :under setup button to adjust increasing of bass/mid/treble/surround.
13.  : under setup button to adjust decreasing of bass/mid/treble/surround.

## Operating range of the remote control

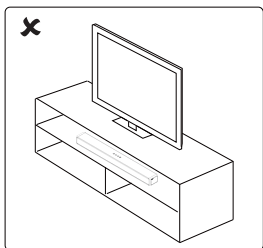
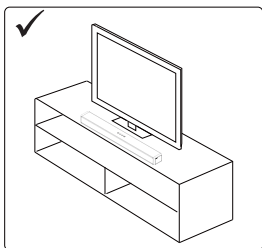
- When the unit is mounted on a wall, point the remote control at the remote control sensor on the bellowed panel. The provided Remote Control allows the unit to be operated from a distance.
- Even if the Remote Control is operated within the effective range 26.2 feet (8m), remote control operation may be impossible if there are any obstacles between the unit and the remote control.
- If the Remote Control is operated near other products which generate infrared rays, or if other remote control device using infrared rays are used near the unit, it may operate incorrectly. Conversely, the other products may operate incorrectly.



## Positioning the Sound Bar

### Place on a flat Surface

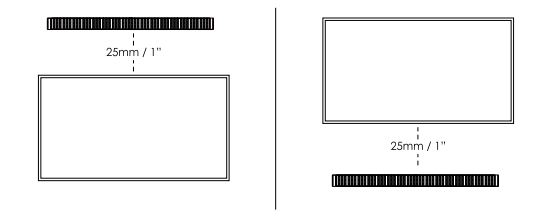
Place the sound bar horizontally on a flat surface such as a TV unit or shelves and align it centrally with the TV screen. Allow some space between the speaker and the wall. Don't place inside a cabinet or an a walled shelf. Follow this guidance for best sound output and good airflow around the sound bar.



### Mount on the wall

**WARNING :** If you don't feel confident to correctly and securely wall-mount the sound bar, Seek the assistance of an experienced person of professional.

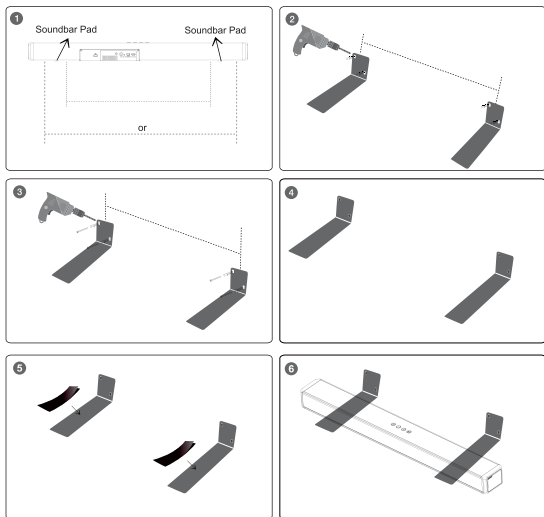
Install the speaker on a vertical, fast, reinforced area of wall. For plaster walls, it is recommended to screw into wall studs for greater security. For optimum performance, allow at least 25mm/1" distance between the sound bar and the TV.



## Wall Mount Installation

- 1, Open 4 holes in the wall referring to iron bracket for wall mounting, the spacing distance of the holes in the wall is corresponding to the symmetrical position on sound bar (When measuring the position of wall mounting, avoid the sound bar pads to put on the iron bracket, because pad is not flat, will not be sticky well on the double-side tape on the bracket.)
2. Fix the plastic anchor in the 4 holes of the wall mounting bracket.
3. Then fix the supplied screws on the plastic anchor and tighten the screws to ensure that the wall mounting bracket will not shake.
4. After fastening the screws, tear off one side of the two double-sided tapes in the supplied packaging, and paste them on the right and left into the extension of the wall brackets according to the suitable position where the Sound Bar on the iron bracket. (Not foot position of the sound bar)

5. Then tear off the other side of the double-sided tape attached to the iron bracket, place the Sound Bar on the double-sided tape on the metal fittings, press it firmly and release it until it is completely stuck.

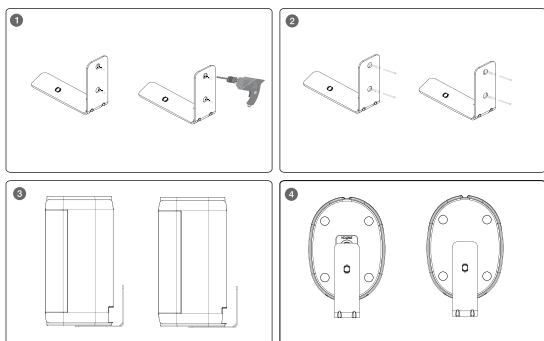


### **Follow below steps to mount the surround speaker on the wall**

1. Open 4 holes on the wall. For the distance between the 2 holes, please refer to the soundbar bracket wall mounting.
2. Fasten the plastic anchors in the 4 holes of the wall mount bracket.
3. Then attach the provided screws to the

plastic anchors and tighten the screws to ensure that the wall mount bracket does not shaking.

4. Place the surround speakers on bracket with the corresponding holes at the bottom, then fix the provided screws in the bottom of the bracket and the holes of the surround speakers, then tighten the screws.

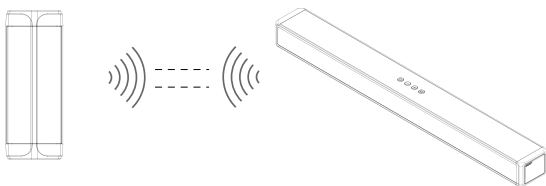


## **Pair up with the surround**

1. Plug the soundbar into the main socket and press "POWER/STANDBY" to turn on the soundbar, then press "INPUT" on the soundbar to switch to the bluetooth (BT) mode.

2. Power on rear surround speakers. The blue LED indicator on the surround will blink slowly which indicates entering into pairing mode between soundbar and the wireless surround.

3. Then long press the “switch button” on the bottom of the rear surround for around 2.5 seconds. The blue indicator blinks quickly for waiting for the soundbar and rear surround to automatically pair.
4. After about 20-30 seconds, the blue indicator of the rear surrounds changes to steady on. The soundbar and rear surround are matched successfully automatically.
5. The devices will be able to pair automatically after the initial successful pair, even if they are switched off and on.
6. If you want to pair your wireless surround with another soundbar, please repeat step 1 to step 4 above. Ensure that the soundbar you want to pair with the surround are within range turned on and any other pairing devices are switched off or on standby.



**Remark:**

1. If the wireless surround speaker is turned on, but the sound bar is in standby mode or turned off (no power), the flashing blue indicator light of the wireless surround

speaker will become red and stay on after about 5 minutes, which means that wireless surround speaker enter into the standby state.

2. In order to avoid receiving wireless signal interference, when you are playing this wireless sound bar system, please keep this wireless sound bar system from your other wireless devices and 2.4G devices at a proper distance.

3. The maximum connection distance between wireless surround and Sound bar: within 10 meters in the open space.

## **Using the Soundbar**

- Before connecting the AC power cord, ensure you have completed all other connections.
- Risk of product damage! Ensure that the power supply voltage corresponds to the voltage printed on the back or the underside of the unit.
- Connect the mains cable to the AC IN of the unit and then into a mains socket.
- Power cord quantity and plug type vary by regions.

## **Basic Operation**

1. Press the power button on either the remote control or the sound bar to turn on the




sound bar.


- 2. Switch on the connected device (such as TV, playback devices, game console etc).
- 3. Press the input button on either the remote control or the sound bar to select your desired input source.

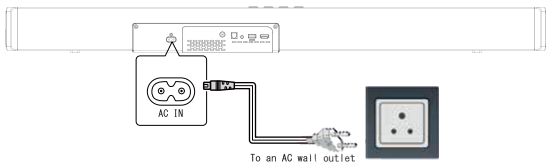
Input Source	Description
HDMI e-ARC/ OPTICAL	Audio from TV (via HDMI e-ARC port or OPTICAL jack)
AUX	Sound from a connected device (via AUX port)
BLUETOOTH	Sound from a Bluetooth connected device
USB	Sound from a USB storage device

***Note:** Keep the sound bar display mode the same as input source. For example, if input source is HDMI e-ARC, Meanwhile the display will be switched to ARC on the screen of sound bar.*

**Power On/Off**

- 1. Plug in the power cord with one side to AC IN on sound bar and the other side to an AC wall outlet (see the following diagram). When you connect the soundbar to the main socket, the unit will be in STANDBY mode, firstly it will display " --- ".
- 2. Switch on the sound bar by short-pressing  button on sound bar or on remote controller, then it will flow display " WELCOME " from right to left. After 12s, the default input mode will automatically appear on display screen.

3. Press and hold the  button on sound bar or on the remote controller for 2 seconds to switch it off, and then disconnect the main plug from the main socket if you want to switch the unit off completely.



## Auto Standby

1. The unit will automatically turns to standby mode when no audio input is received for 20 minutes. The sound bar will wake up from standby mode when any button is pressed or source input is received.

2. If the TV or the external unit is disconnected, switched it off

- To switch the unit off completely, remove the mains plug from the mains socket.

- Please turn the unit off completely to save energy when not in use.

3. The screen will be turned off for around 20 seconds without any operation, when pressing the power buttons on the sound bar or on remote control or the using phone's volume increase or decrease, the display will be waken up again.

## Select Modes

1. Press the button repeatedly on the soundbar or press the INPUT button on the remote control to select the BT, AUX, OPTICAL, HDMI e-ARC, USB mode. The selected mode will show on the display.

2. Below are input mode names appearing in the sound bar display:

BT - Bluetooth Pairing mode, AUX - AUX mode,  
OPT - Optical mode, ARC - HDMI e-ARC mode,  
USB - USB mode

*The port of HDMI in and HDMI e-ARC are support Video & Audio*

**Audio:** maximum supported audio content is Dolby Atmos, Dolby Digital, Dolby Digital Plus, Dolby TrueHD, Dolby Surround.

**HDMI:** HDMI version 2.1


## Playing Audio via BT Connection



Through Bluetooth, connect the Soundbar with your Bluetooth device (such as an iPad, iPhone, iPod touch, Android phone, or laptop), and then you can listen to the audio files stored on the device through your Soundbar speakers.

## What you need

- A Bluetooth device which supports Bluetooth profile A2DP, AVRCP and with Bluetooth version as 5.0.
- The maximum operational range between the Soundbar and a Bluetooth device is approximately 8 meters (26.2 feet).



1. Turn on the sound bar and short-press  button repeatedly on the unit or INPUT button on the remote control to switch the sound bar to Bluetooth model and LED display BT on the sound bar will flicker in the Bluetooth pairing mode.

2. On the Bluetooth device, switch on Bluetooth, search for and select ZEB-JUKE BAR 9750 PRO DOLBY ATMOS on your Bluetooth list to start connection (see the user manual of the Bluetooth device on how to enable Bluetooth) if prompted for a password, please use "0000".

3. Wait until you hear the voice prompt from the Soundbar. If the successfully connected, BT stops flickering and is displayed on the display panel.

4. Select and play audio files or music on your Bluetooth device.

- During play, if a call is coming, music play is paused. Play resumes when the call ends

- If your Bluetooth device supports AVRCP profile, on the remote control you can press  to skip to a track, or short-press  to pause/resume play; Press and hold the **RESET**

button more than 2 seconds to restore factory default settings; Hold **Pair** button on the remote control for more than 2 seconds to disconnect paired BT device or connect back last disconnect BT device.

5. You can use the volume buttons on the sound bar or on the remote controller to adjust the volume to your requirements

6. To exit Bluetooth, select other relevant input source.

- When your switch back to Bluetooth mode, Bluetooth connection remains active.

7. Press the **VOL +/-** buttons to adjust the volume to your desired level.

#### **Notes:**

- *Having connection problems? Remove **ZEB-JUKE BAR 9750 PRO DOLBY ATMOS** from your device's Bluetooth history and ensure it's less than 8 meters away. Then try pairing again. To get the best sound quality, make sure there is a clear line of sight between the connected device and your sound bar.*

- *If your pairing device or connected device is switched off or manual disconnected, the sound bar will automatically enter pairing mode.*

- *The music streaming may be interrupted by obstacles between the device and Soundbar, such as wall, metallic casing that covers the device, or other devices nearby that operate in the same frequency.*

- *If you want to connect your Soundbar with another Bluetooth device, press and hold Pair on the remote control to disconnect the currently connected Bluetooth device.*

## Playing Audio via USB Port

The sound bar automatically switches to USB input mode with the LED display USB when a USB flash drive is inserted (this mode isn't selectable on the sound bar or remote control unless a USB flash drive is connected).

1. Ensure that your USB flash drive contains MP3 audio files (other file types not supported)

2. Connect the USB flash drive to the USB port on the sound bar (or your own USB extension cable connected to the USB port); music will automatically play with LED display "00:00", when music is played on, the play time will be automatically displayed on the screen.

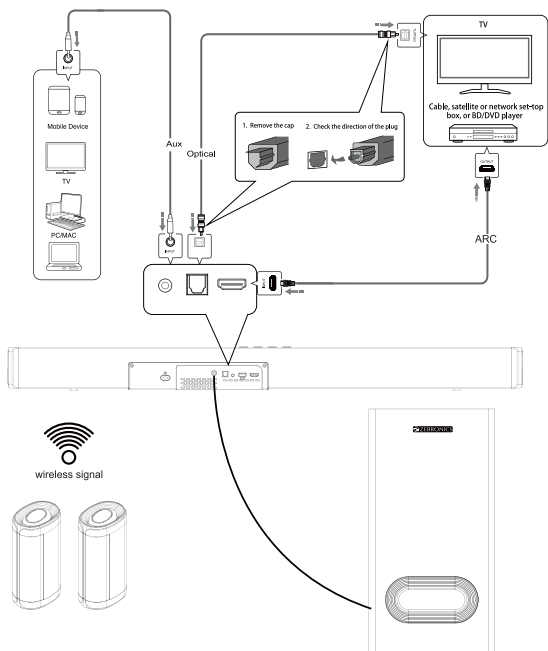
3. Press the **VOL +/-** buttons to adjust the volume to your desired level.

4. During playback:

⏮ Start, pause or resume play.
⏮/⏭ Skip to the previous or next track.




## Using the Soundbar



### Audio input (Aux) Connection

- Use a 3.5mm to 3.5mm audio cable to connect the PC, tablet, smartphone, TV's headphone socket to the AUX socket on the soundbar.
- Use a RCA to 3.5mm audio cable to connect the Blue Ray DVD Player / TV's audio output sockets to the AUX socket on the soundbar.

- Then short-press the  button on the sound bar or on the remote controller to switch to audio input mode with LED display lighting up **FLUX**.
- In this mode, playback can only be controlled on your connected device

***Note:** For some computers, you may need to access the audio control panel to manually set the soundbar as shown steps on above.*


## **HDMI (ARC) Mode**

### **Connect to HDMI (e-ARC) Socket**

Some 4K HDR TVs require the HDMI input or picture settings to be set for HDR content reception. For further setup details on HDR display, please refer to the instruction manual of your TV.

#### **Option 1: e-ARC (enhanced Audio Return Channel)**

Your Soundbar supports HDMI with enhanced Audio Return Channel (e-ARC). If your TV is HDMI e-ARC compliant, you can hear the TV audio through your Soundbar by using a single HDMI cable.

1. Use a High Speed HDMI cable, connect HDMI (e-ARC) on the soundbar to HDMI (e-ARC) connector on your TV.
2. Then short-press  button on the sound bar or INPUT button on the remote controller to switch to HDMI (e-ARC) mode. After successfully connected, the LED display will



show ARC. (If TV support e-ARC, LED display will show eARC)

3. Press the **VOL +/-** buttons to adjust the volume to your desired level.

4. If you wish, you can change the audio settings by using the relevant buttons on the remote controller.

**Note:**

- Your TV must support the HDMI-CEC and e-ARC function. HDMI-CEC and e-ARC must be set to be on.

- The setting method of HDMI-CEC and e-ARC may differ depending on the TV. For details about e-ARC function, please refer to your TV owner's manual.

- Only HDMI 1.4 compatible cables can support the e-ARC function.

- The Audio Return Channel (e-ARC) function enables an HDMI compatible TV to send the audio stream to HDMI OUT of the unit.

## **Optical Mode**

Using an optical cable, connect the OPTICAL connector on your Soundbar (Optical digital input) to the OPTICAL OUT connector on the TV or other device. The TV or other device must have an optical digital output. Proceed as follows:

- Connect the optical cable to the OPTICAL jack on the rear of the sound bar.
- Connect the other end of the optical cable to audio output jack on TV or other device.
- Set TV to PCM Stereo or Stereo 2.0.
- Start playing on the TV

- Press the source input button on the sound bar or remote control to activate the corresponding mode (the OPTICAL mode) to open optical digital input of your sound bar. After successfully connected, the LED display will show OPT. Operate your audio device directly for playback features.
- Press the **VOL +/-** buttons to adjust the volume to your desired level. buttons on the remote control.

## **DOLBY ATMOS®**

Manufactured under license from Dolby Laboratories. Dolby, Dolby Audio, Dolby Vision, Dolby Atmos and the double -D symbol are trademarks of Dolby Laboratories.

### **What is DOLBY ATMOS® ?**

Dolby Atmos® transports you from the ordinary into the extraordinary with breathtaking, moving audio that fills your room and flows above and around you.

Dolby Atmos® gives you amazing experience you have never heard before by overhead sound, and all the richness, clarity, and power of Dolby sound.

### **Using DOLBY ATMOS® :**

DOLBY ATMOS® is only available in HDMI IN and HDMI OUT (ARC) mode. For the details of the connection, please refer to "HDMI Connection".

1. To use Dolby Atmos® in HDMI 1 /HDMI 2 / HDMI ARC mode, your TV has to support Dolby Atmos®.
2. Make sure that "No Encoding" is selected for bitstream in the digital audio output of the connected external device (e.g. Blu-ray DVD player, TV etc.).
3. While entering Dolby Atmos / Dolby Digital Plus format, the soundbar will show DOLBY ATMOS / DOLBY SURROUND.

4. Set the audio output sampling rate to 192 kHz if you can adjust it. This sound bar supports 4K Pass through and DOLBY VISION. When you play a disc which supports 4K video signal, the signal can be delivered to your TV.

**Note:**

- The full Dolby Atmos experience is only available when the Soundbar is connected to the source via a HDMI 2.0 cable.
- The Soundbar will still function when connected via other methods (such as a Digital Optical cable) but these are unable to support all of the Dolby features. Given this, our recommendation is to connect via HDMI, in order to ensure full Dolby support.

**Select Equalizer (EQ) Effect**

**Select predefined sound modes to suit your video or music**

Press the EQ button on the remote control to select your desired preset equalizer effects:

Music mode	Enhances the treble and adds greater depth to the music.
Movie mode	Intensifies the bass and enhances the clarity of dialogue.
News mode	Enhances the clarity of voices. Suitable for watching TV shows and news.
3D mode	Enhances background music and full range to be sports effect.

## Adjust the Volume

Press Vol+ / Vol- (Volume) to increase or decrease a volume level.

- To mute sound, press Mute.
- To restore the sound, press Mute again or press Vol+ / Vol- (Volume).

## Adjust the Bass/Treble Level

### Adjust the Bass Level

- Press the **BASS+ / BASS-** button on the remote control to activate bass level setting.

The display will show **b +5 / b -5**.

### Adjust the Treble Level

- Press the **TREB+ / TREB-** button on the remote control to activate treble level setting.

The display will show **T +5 / T -5**.

## Wireless Satellite Pairing Guide

ZEB-JUKE BAR 9750 PRO DOLBY ATMOS should be paired manually for the first time, once done it'll connect automatically from the next time when it is Powered ON.

### Setup Procedure:

1. Plug the **ZEB-JUKE BAR 9750 PRO DOLBY ATMOS** to the power socket and press **"POWER"** button to turn it ON.
2. Press the **"INPUT"** to change it to the BT mode.
3. Once done with the above two process, Turn ON the rear satellite.
4. Now press & hold the switch button on the satellite for 2.5 Seconds, Blue indicator blinks rapidly.
5. After 20 to 30 Seconds of this process the Blue LED on the satellite glow constantly indicates that the satellite is successfully connected.

### Note:

- Only master satellite can be connected wirelessly, the other satellite can be connected straight to the master satellite through wire.
- If the Sound Bar is turned OFF, the satellites goes to stand-by mode after 5 Minutes (RED LED).
- To avoid the interference make sure the sound bar is placed away from any other wireless devices or 2.4GHz enabled devices.
- Do not place the satellites more than 10 meters away from the sound bar.

## Features:

Wireless BT/USB/AUX/Optical IN/HDMI(e-ARC)

Remote control

Wall Mountable

LED Display

Volume/Media Control

16.51cm Subwoofer

5.1.2 Channel Surround Soundbar

Dolby Audio/ Dolby Atmos

Dual Wireless Rear Satellites

## Specifications

### Output Power

Subwoofer : 150 watts

Soundbar : 225 watts

Satellites : 75 watts x 2

Total : 525 watts

### Driver Size

Subwoofer : 16.51 cm x 1

Soundbar : (6.35cm x 3) + (5.08 x 2)

Satellites : (5.2cm x 7.5cm) x 2

### Impedance

Subwoofer : 4Ω

Soundbar : 8Ω x 5

Satellites : 8Ω x 2

Frequency response : 45Hz-20KHz

S/N Ratio : ≥72dB

Separation : ≥42dB

File format support : MP3 (USB)

Line input : 3.5mm, Optical IN,  
HDMI (e-ARC)

Max supported memory size (USB)	: 32 GB
BT name	: ZEB-JUKE BAR 9750 PRO DOLBY ATMOS
BT version	: 5.0
Product Dimension (W x D x H)	
Subwoofer	: 19 x 30.6 x 36.7 cm
Soundbar	: 96 x 10.9 x 8 cm
Satellites	: 7.3 x 10 x 19 cm
Net. Weight	
Subwoofer	: 4.3 kg
Soundbar	: 3.35 kg
Satellites	: 500g x 2
Total	: 8.65 kg



# Troubleshooting

PROBLEM/TROUBLE	POSSIBLE CAUSE	SOLUTION
There is no sound output from sound bar.	Another input source is selected.	Select an appropriate input source.
	The mute function is activated.	Cancel the mute function.
	The volume of sound bar or TV/other device is adjusted too low.	Increase the volume level on sound bar or by remote control or on TV.
	The power cable of the unit is not connected properly.	Make sure that the power cable of the unit is connected to an AC wall outlet securely.
	Input jacks on a playback device are connected.	Connect the input jack on the sound bar and the output jack on the playback device.
	Signals that the sound bar cannot playback when being input.	When sound bar and TV or other devices are connected by an audio cable through TV (ARC) port output, Select the correct audio input and output. Make sure the digital audio output setting on the playback device to PCM format. Since the output format of our sound bar is PCM, if it is used, the decoding format of TV or other devices will be adjusted to PCM state.
The sound is distorted or echoed.	TV volume is not muted.	If you play audio from TV through the sound bar, make sure that the TV is muted.
The volume decreases when the unit is turned on.	The automatic volume adjustment function is activated. To prevent excessive loudness, the unit automatically controls its volume within a certain level when the unit is turned on.	Turn up the volume as required.
Noise is heard.	The sound bar is too close to another digital or high-frequency device.	Move those devices away from the sound bar.
The unit cannot be operated by using the remote control.	The unit is out of the operating range.	Use the remote control within the operating range.
	The batteries are weak.	Replace with new batteries.
	The remote control sensor of the sound bar is exposed to direct sunlight or strong lighting.	Adjust the lighting angle or reposition the sound bar. Make sure our product cannot be used in sunlight.
The TV cannot be operated by using the TV's remote control.	The unit is blocking the TV's remote control sensor.	Position the unit so that it does not obstruct the TV's remote control sensor.
A device cannot connect the sound bar or the unit cannot be connected to a Bluetooth device.	Bluetooth function of the device is not activated, not paired or connected correctly.	Restart the sound bar and try pairing again. You have not enabled the Bluetooth function of the device; see the user manual of the device on how to enable the function and correctly connected the device. The sound bar is already connected with another Bluetooth device. Disconnect the connected device, and then try again.
	Bluetooth is not selected as the input source.	Select Bluetooth as the input source.
	The unit is connected to a different Bluetooth device.	Un-pair the Bluetooth device that is currently connected and pair with the desired Bluetooth device.
	The unit is too far away from the Bluetooth device.	Move the Bluetooth device closer to this unit.
	A device emitting electromagnetic waves (such as a microwave oven, a wireless device and so on) may be placed nearby.	Do not use this unit near devices that emit electromagnetic waves.
	The Bluetooth device that you are using may not support the protocol.	Use a Bluetooth device that supports the protocol.
	The connection profile registered in the Bluetooth device may not be functioning correctly for some reason.	Delete the connection profile in the Bluetooth device and then connect the Bluetooth device to this unit.
Sound quality of audio play from a connected Bluetooth device is poor and connection is not stable.	The Bluetooth reception is poor.	Move the device closer to the sound bar, or remove any obstacle between the device and the sound bar.
No sound can be heard or sound breaks (Bluetooth mode)	The volume on the Bluetooth device may be too low.	Raise the volume on the Bluetooth device.
	Bluetooth is not selected as the input source.	Select the Bluetooth as the input source.
	Playback on the device has not been performed.	Perform playback on the device.
	The sound output on the Bluetooth device may not be set to this unit.	Select this unit as the output device on the Bluetooth device.
	The connection to the Bluetooth device was cut off.	Connect with the Bluetooth device one more time.
	The unit may be too far away from the Bluetooth device.	Move the Bluetooth device near this unit.

PROBLEM/TROUBLE	POSSIBLE CAUSE	SOLUTION
	A device emitting electromagnetic waves (such as a microwave oven, a wireless device and so on) may be placed nearby.	Do not use this unit near device that emit electromagnetic waves.
There is no sound from sound bar - HDMI TV (ARC) Mode	Incorrect HDMI cable is used causing no signal to be sent to soundbar. Incorrect input mode is selected.	1. Make sure that the user connected TV and sound bar by a 19-core HD ARC cable. 2. The sound bar and TV are connected through TV (ARC) port output; make sure that the TV is ARC compliant. 3. Set the TV to HDMI ARC (CEC). Set the audio output mode of TV to PCM format. (Or refer to your TV user manual)
There is no sound from sound bar (OPTICAL Mode)	OPTICAL cable might be damaged and no signal is received by the soundbar due to a failed connection and incorrect operation mode selected.	1. Replace the OPTICAL cable with a new one to connect. 2. Set your TV audio output to PCM format. (Pls refer to your TV user manual)
There is no sound from sound bar (USB mode)	USB file type is not support & Sound bar doesn't switch to USB input mode automatically when USB is inserted.	Make sure that USB flash drive contains MP3 files because other file types are not supported. Switch the input mode once again, then playback again.
Disconnected between subwoofer and sound bar	Connection is not correct between subwoofer and sound bar	1. Turn off sound bar and surround satellites by removing the AC plug from the socket. 2. Make sure that sound bar and surround satellites are connected to the electricity power at the same time and switch on sound bar and surround satellites again.
There is no sound output from rear active speaker	Power input or pair connecting issue.	1. Check the adaptor input 2. Pair again with soundbar
There is no sound output from rear passive speaker	Cable connecting issue.	Check again connected cable between active rear speaker
Inverse channel from R to L	Speaker position confusion.	Press R/L switch button from active rear speaker
Noise is happened from rear speakers	BT connecting or poor signal.	1. Disconnect & connect with soundbar again 2. Power off and on for soundbar and rear active speaker again.

**ISO 9001:2015 Certified Company**  
**www.zebronics.com**

