



Trolley DJ Speaker

450
MOVING
MONSTER
2X8L



User Manual

www.zebronics.com

Thank you for purchasing Zebronics Speaker. Please read this user manual carefully before operation & save it for future reference.

Note:

- Avoid the use of this speaker at the high-temperature and high humidity environment.
- Avoid self-disassemble of speaker, or it will result in the failure of warranty.

Features:

Trolley speaker

Wireless BT / USB / Micro SD / FM / AUX

Mic Input

Recording function

Karaoke function

LED display

LED lights with On/Off switch

20.32cm x 2 full range speaker

Remote control

Wireless Mic

Phone/Tablet holder

Built-in rechargeable battery

Supports external battery

Volume, bass & treble controls

Specification:

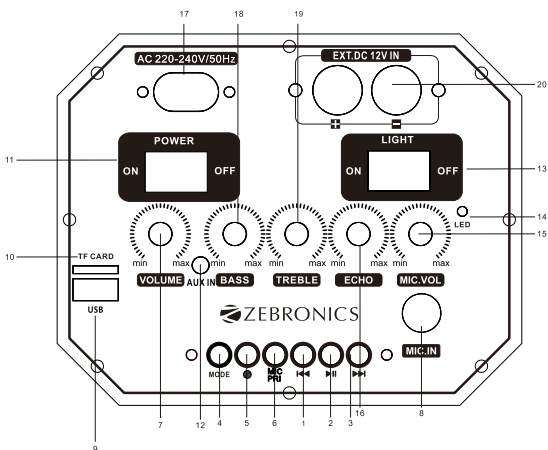
Output power (RMS)	: 48W
Driver size	
Full range	: 20.32cm x 2
Tweeter	: 2.54cm x 1
Impedance	
Full range	: 4Ω
Tweeter	: 8Ω
Frequency response	: 60Hz-18kHz
S/N Ratio	: ≥65dB
File format support	: MP3, WMA, WAV
Line input	: 3.5mm
Max. supported USB/mSD	
Memory size	: 32GB
FM frequency range	: 87.5 MHz-108 MHz
Charging time	: 7h
Playback time	: 10.5h*
BT name	: ZEB-450 MOVING MONSTER 2X8L
BT version	: v4.2
Product dimension (Dia x H)	: 28 x 80.5 cm
Net. weight	: 8.25kg

** at 50% volume (LED off)*

Package Contents:

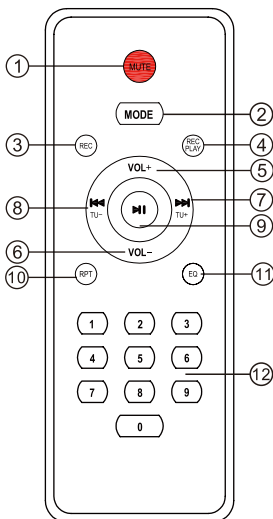
DJ Speaker	: 1 U
Remote control	: 1 U
Wireless MIC	: 1 U
QR Code Guide	: 1 U
Input cable	: 1 U
Power Cord	: 1 U
Microphone Clamp	: 1 U

Control Description



1. Previous Track/FM Channel Key
2. Play/Pause
3. Next Track/FM Channel Key
4. Mode Change Key
5. Start Recording Key
Long Press to Recording
Short Press to Play Recorded File.
6. Mic Priority On-Off Key
7. Master Volume Control
8. Microphone Input Jack
9. USB Port
10. Micro SD Card Port
11. Power Switch
12. AUX IN
13. Light Switch
14. LED Indicator
15. Mic Volume Control
16. Echo Control
17. AC Input
18. Bass Control
19. Treble Control
20. External 12V Battery Terminals

Remote Control



1. Mute/Unmute
2. Mode Change Key
3. Recording Key
4. Play Recorded File
5. Volume +
6. Volume -
7. Next Track/FM Channel Key
8. Previous Track/FM Channel Key
9. Play/Pause Key
10. Repeat Key
11. EQ Preset
12. Numeric Selection (0-9)

General Instructions

BT connectivity

Switch the speaker to BT mode, scan for nearby BT devices in your mobile. Tap on **ZEB-450 MOVING MONSTER 2X8L** to connect.

USB/Micro SD Mode

Insert the USB/Micro SD card to the speaker. The speaker will detect the USB/Micro SD card automatically & the songs from it will be played.

FM Radio

Switch the speaker to FM, In FM Mode, long Press the Play/Pause Key to scan the available FM channels. Once the scanning is done, The speaker will start playing the **f i r s t s c a n n e d c h a n n e l .**

AUX-In

The speaker can be connected to an audio device using a 3.5mm cable. Connect the one end of the cable to the speaker & connect the other end of the cable to an audio source. The songs from the audio source can be heard through the speaker.

Recording Function

To record a voice, first plug-in a

USB/Micro SD card into the speaker which will act as a storage device. Press the REC. key on the remote to start/stop recording. Once the song or voice is recorded through the mic, press the REC. PLAY key to play the recorded file.

Note: Speaker can record the Mic input

Charging Indication:

Low Charge : Red LED Flashing

Full Charge : Red LED Glows

ISO 9001:2015 Certified Company

www.zebronics.com

