

 ZEBRONICS

Trolley Speaker

ZEB **TRX211**
ZEB **MOVING**
ZEB **MONSTER**



User Manual

www.zebronics.com

Thank you for purchasing ZEB-TRX211 MOVING MONSTER. Please read this user manual carefully before operation & save this user manual for further reference.

Note:

- Avoid the use of this speaker at the high-temperature and high humidity environment.
- Avoid self-disassemble of speaker, or it will result in the failure of warranty.

Features:

Trolley speaker

Wireless BT / USB / Micro SD / FM / AUX /

Mic Input

Karaoke function

LED display

LED lights

30.48cm full range speaker

Remote control

Wireless mic

Built-in rechargeable battery

TWS Function

Specification:

Output power (RMS)	: 48W
Driver size	
Full range	: 30.48cm
Tweeter	: 6.3cm
Impedance	
Full range	: 3Ω
Tweeter	: 10Ω
Frequency response	: 100Hz-20kHz
S/N Ratio	: ≥80dB
File format support	: Mp3
Line input	: 3.5mm
Max. supported USB/mSD	
Memory size	: 32GB
FM frequency range	: 87.5 MHz-108 MHz
Charging time	: 8-10H
Playback time	: 5-7H*
BT name	: ZEB-TRX211 MOVING MONSTER
BT version	: 5.0
Product dimension (W x D x H)	: 380 x 285 x 520 mm
Net. weight	: 5.65kg

** at 50% volume (LED off)*

Package Contents:

DJ Speaker : 1 unit

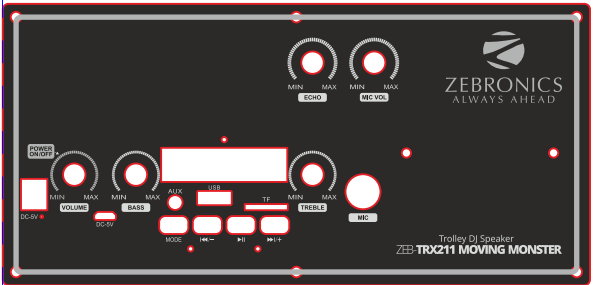
Remote : 1 unit

Wireless Mic : 1 unit

Charging Cable : 1 unit

Input cable : 1 unit

Button/Port Description



1. OFF/ON volume Knob: To turn ON/OFF the speaker and control the master volume.
2. MIC volume Knob
3. Echo knob
4. Bass knob
5. Treble knob
6. DC 5V: Plug the Micro USB cable to the speaker and connect other end USB port to the power source. (DC 5V)
7. USB slot
8. Micro SD slot
9. 3.5mm jack
10. MIC In
11. Play/Pause: Under USB/Micro SD/Bluetooth mode, short press for play and pause;

12. MODE: To change mode during USB/Micro SD, Bluetooth, FM and Aux-in mode.

13. PREV/-: USB/Micro SD/Bluetooth/FM mode: Press to move previous FM channel / track. long press to decrease the volume.

14. NEXT/+: USB/micro SD/Bluetooth/FM mode: Press to move next FM channel / track. long press to increase the volume.

Bluetooth:

Switch ON the speaker and goes to BT mode automatically. Open BT settings of your smart phone and search for the BT name "ZEB-TRX211 MOVING MONSTER" and tap to connect it. Short press the ▶|| button to Play/Pause the music, press the ◀◀ and ▶▶ for changing to Prev. and Next track.

TWS operation:

1. You will be needing 2 no's of ZEB-TRX211 MOVING MONSTER speaker for TWS operation.
2. Switch ON both the speaker and change them into BT mode.

3. Press and hold (5 -10s) the MODE button on any one of the speaker until a tone for TWS mode is heard. Both the speakers will connect with each other.

4. Now open BT settings of your smart phone and search for the BT name “ZEB-TRX211 MOVING MONSTER” and tap to connect it.

***Note:** TWS only work under Bluetooth mode and both the speakers should be of similar models.*

AUX-IN

Connect a 3.5mm AUX cable, one side to the speaker side and the other one to the source's side. Switch the speaker into AUX mode and thereafter audio can be played through the speaker.

USB/Micro SD Card

Plug in the USB/Micro SD card to their respective ports on the speaker and the speaker will automatically detect and start playing songs from it. Press the **▶||** to Play/Pause, and the **◀◀** and **▶▶** for changing between Prev. and Next tracks.

FM Radio

Press the Mode button to switch to FM Mode. Press the ►|| button to scan the FM channels and save them. Once complete, press the ◀◀ and ►► for Prev. and Next channel.

***Note:** Connect the charging cable for better signal reception in FM mode.*

Charging Procedure

Connect the one end of the charging cable to the charging port of the speaker and the other end to a DC 5V adapter. The speaker will show a RED LED indication while charging & RED LED will turn off, when fully charged.

***Note:** Can also use the Micro USB port on speaker for charging.*

