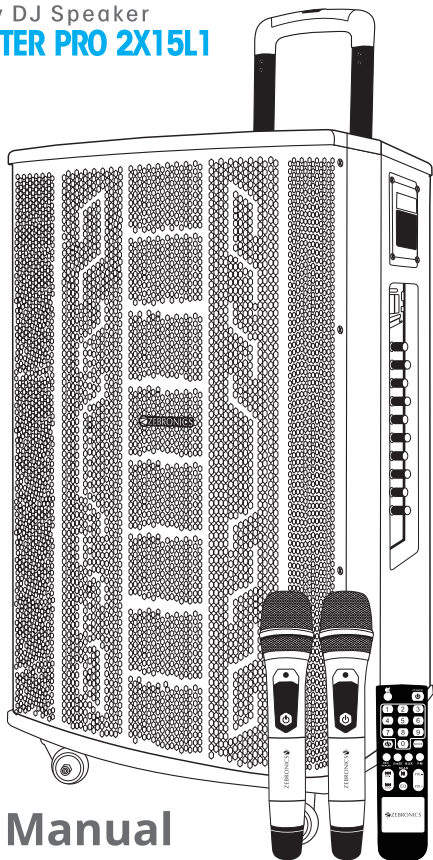


# ZEBRONICS

## *Metal Pro*

ZEB Trolley DJ Speaker  
**MONSTER PRO 2X15L1**



## User Manual

[www.zebronics.com](http://www.zebronics.com)

Thank you for purchasing Zebronics Speaker. Please read this user manual carefully before operation & save it for future reference.

**Note:**

- Avoid the use of this speaker at the high temperature and in high humid environment.
- Avoid self-dismantling of speaker. If you do so the warranty will be void.

**Features:**

- Wireless BT / USB x 2 / Micro SD / FM / AUX / Mic Input x 2 / Guitar IN x 2
- Recording function
- LED display
- 38.1cm full range speaker
- 2 way speaker
- Remote control
- Two Wireless mic
- Volume, bass & treble controls
- Karaoke
- Mic volume, Mic bass & Mic treble controls
- Echo / Delay / Reverb / Guitar volume controls
- Supports external battery
- Built in rechargeable battery
- 4 Castor wheels with retractable handle

## Specification:

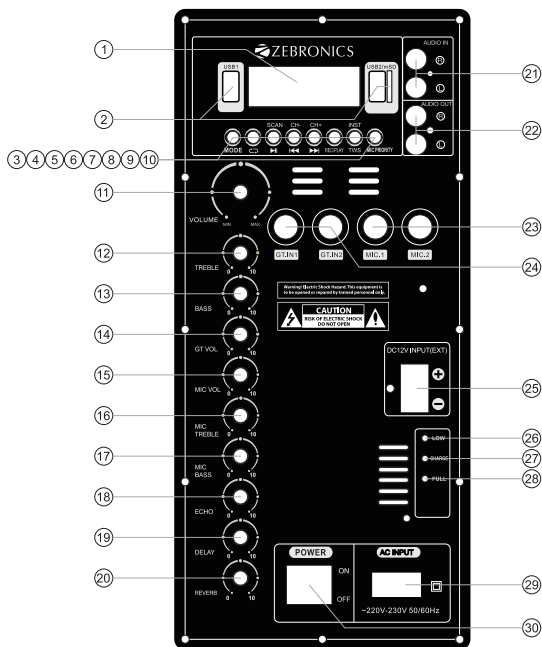
Output power (RMS)	: 150W
Driver size	
Full range	: 38.1cm
Tweeter	: 2.54cm
Impedance	
Full range	: 4 $\Omega$
Tweeter	: 6 $\Omega$
Frequency response	: 60Hz-19kHz
S/N Ratio	: $\geq$ 80dB
File format support	: MP3, WMA, WAV
Line input	: RCA to 3.5mm
Max. supported USB/mSD	
Memory size	: 64GB
FM frequency range	: 87.5 MHz-108 MHz
Charging time	: 6-8h
Playback time	: 4h*
BT name	: Zebronics Metal Pro
BT version	: 4.2
Product dimension (W x D x H)	: 440 x 430 x 760 mm
Net. Weight	: 29 kg

*\* at 50% volume*

## Package Contents:

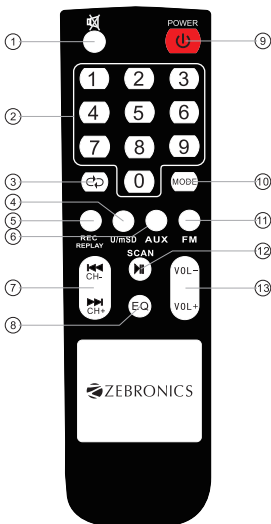
Trolley DJ Speaker	: 1 U
Remote	: 1 U
Wireless Mic	: 2 U
QR Code Guide	: 1 U
Input cable	: 1 U
DC cable	: 1 U
Power Cord	: 1 U

## Control Description



- 1.LED Display
- 2.mSD/USB 1 & 2 card
- 3.Mode
- 4.Repeat button
- 5.Play/Pause&FM Scan
- 6.Previous/Channel-
7. Next/Channel+
- 8.Mic Recording / play
- 9.TWS
- 10.Microphone Priority(Long pressing)
- 11.Master volume control
- 12.Treble volume control
- 13.Bass volume control
- 14.Guitar volume control
- 15.Microphone volume control
- 16.Microphone treble volume control
- 17.Microphone bass volume control
- 18.Echo volume control
- 19.Delay volume control
20. Reverb volume control
- 21.Audio in
- 22.Audio out
- 23.Microphone input port 1&2
- 24.Guitar input 1&2
- 25.DC 12V input(Ext)
- 26.Battery low light
27. Battery charging light
- 28.Battery full light
- 29.AC Input
- 30.Power Switch

## Remote Control



1. Mute control Button
2. 0-9 Number Control button to selecting Mp3 song
3. Repeat control button
4. USB/mSD Control button
5. Mic Recording & Replay Control button
6. Aux Control button
7. Previous (Channel -) & Next (Channel +)
8. EQ control Button
9. Power control button
10. Mode control Button
11. FM Control button
12. Play/Pause & FM Scan
13. Volume- & Volume+

## General Instructions

### BT connectivity

- Switch the source to BT mode
- Turn on BT on your mobile and scan for nearby BT devices.
- Tap on **“Zebronics Metal Pro”** to connect.

### USB/Micro SD Mode

- Insert the USB/Micro SD card into the slot provided on the speaker
- The speaker will automatically detect the USB/Micro SD card and the supported audio content will be played from it.

*Note: This mode isn't selectable on the speaker or remote control unless a USB/mSD flash card is connected*

### FM Radio

- Switch the speaker to FM mode
- Long press the Play/Pause button to scan the available FM channels.
- Once the scanning is done, the first scanned channel will start playing

### AUX-In

- The speaker can be connected to an audio source using a RCA to 3.5mm cable.
- Connect one end of the cable to the AUX-In port on the speaker and the other end an audio source.

- The audio from the source can be heard through the speaker.

### **AUX-Out**

- The speaker can be connected to another speaker using a RCA to 3.5mm cable.
- Connect one end of the cable to a speaker and the other end to another speaker.
- The audio can be heard through both the speaker.

### **Recording Function**

- First plug-in a USB/mSD flash card which will act as a storage device into the slot provided on the speaker.
- Press the **REC.** button on the remote to start the recording.
- Press the **REC.** button again to stop the recording.
- Press the **REC.PLAY** button to play the recorded file.

### **Charging indication:**

**Charging indication** : Red LED Glows

**Full Charge indication** : Green LED Glows

ISO 9001:2015 Certified Company

[www.zebronics.com](http://www.zebronics.com)

