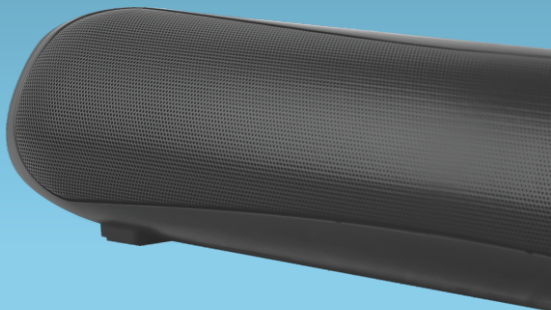
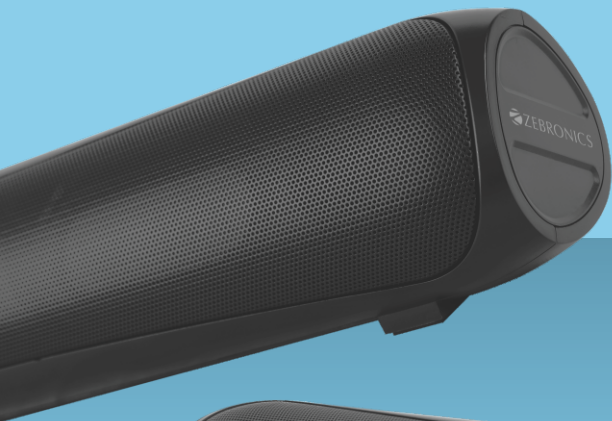




Mini Soundbar

VITA BAR
202



User Manual

www.zebronics.com

Dear Customer,

Thank you for purchasing “ZEB-VITA BAR 202” Mini Soundbar. Please read this user manual carefully before operation & save it for future reference.

Note:

- *Avoid the use of this product at the high-temperature and high humidity environment.*
- *Avoid self-disassemble of product, or it will result in the failure of warranty.*
- *Please charge the product with power adaptor output rated voltage of DC 5V.*
- *To know more about Terms and conditions for warranty policy, please visit*

<https://zebronics.com/pages/warranty-policy>

Features

18W RMS Output

Upto 12h Backup

Powerful Dual 52mm Drivers

BT v5.3 | USB | AUX

TWS Function

Dual Passive Radiators

LED Indicator

Compact Soundbar

Media / Volume Control

Type-C Charging

Built-in Rechargeable Battery

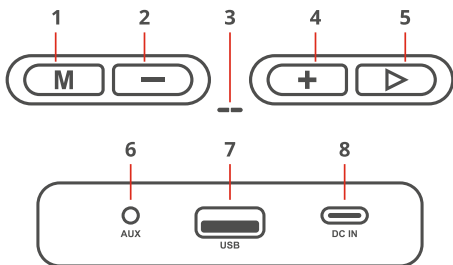
Specification

Output Power (RMS)	: 18W
Driver Size	: 5.2cm x 2
Impedance	: 4Ω x 2
Frequency Response	: 100Hz-18kHz
S/N Ratio	: ≥70dB
Separation	: ≥45dB
File Format Support	: MP3 (USB)
Line Input	: 3.5mm
Max. Supported Memory Size	: 32GB (USB)
BT Name	: ZEB-VITA BAR 202
BT Version	: v5.3
Charging Time	: 3h
Playback Time	: 12h
Product Dimension	: 37 x 6.7 x 6.5 cm (W x D x H)
Net. Weight	: 632g

Package Contents

Speaker	: 1 U
Input Cable	: 1 U
Charging Cable	: 1 U
QR Code Guide	: 1 U

Buttons & Ports Description:



1 Single-Press to switch between available Input Modes

2 Single-Press to Volume Down & Long-Press to Previous Track (BT & USB)

3 Charging Indicator

Charging : LED Stays Red

Full Charge : LED Goes OFF

4 Single-Press to Volume Up & Long-Press to Next Track (BT & USB)

5 Play/Pause

- ♦ Single-Press to Play/Pause Track in BT/USB & Mute/Unmute in AUX.

- ♦ Long-Press to get into TWS Mode.

6 AUX Input Port (Works only when AUX cable is Plugged In)

7 USB Input Port (Works only when USB is Plugged In)

8 Type-C Charging Port

BT Connection:

Use the “**M**” button to switch the input to BT mode, You will hear a notification voice indicating BT mode and Blue LED flashes. Now turn on BT in your source device settings and tap on **ZEB-VITA BAR 202** and click pair. You will hear a notification voice indicating the pairing was successful.

USB Input:

Plug a pen drive into the USB port, and the speaker will switch automatically to USB mode and start playing the supported audio files.

AUX Input:

Plug in the provided aux input cable to the speaker and plug the other end to any compatible audio output device.

***Note:** Media controls can be controlled only via audio source device*

Charging Instruction:

Use the provided Type C charging cable with a DC 5V/1A rated power adapter/charger.

ISO 9001:2015 Certified Company
www.zebronics.com

