



Surveillance 4G Dome Camera

WFPD 3M



User Manual

www.zebronics.com

Dear Customer,

Please refer to this user manual for optimum usage of **ZEB-WFPD3M** CCTV Surveillance 4G Dome Camera.

Features

3MP Camera

Full Duplex Audio Communication

2 Built-In LED (IR/White LED)

With Smart Night vision / IR night vision /

Colored Night Vision

Supports 4G Sim Card

Accessible Reset Switch

Dedicated mSD card slot for storage

10x Digital Zoom

Remote Alarm trigger

Motion Detection notification (via mobile app)

Advanced App for Smartphones

Specifications

Image Sensor : 1/2.8" CMOS Sensor

Resolution : 3MP (2304 x 1296)

Lens : 4mm

LED : 2 IR / White Array LED

IR Distance : 20 Meters

White LED Distance : 10 Meters

Min Illumination : Color: 0.01, Lux, Black &
White: 0.001 Lux

Day & Night : IR-cut Auto ICR

Light Mode	: Full Color / Infrared / Intelligent
Viewing Angle	: Horizontal: 75°, Vertical: 59°, Diagonal: 88°
Video Streaming :	
Main Stream	: 2304x1296@15fps
Sub Stream	: 800x448@15fps
Audio Input/Output :	Two way audio, Built in microphone and speakers
Audio Compression	
Standard	: AAC
Zoom	: 10x Digital
DNR	: 3D Digital Noise Reduction
White Balance	: Auto
WDR	: D-WDR
Electronic Shutter	: Auto
Features	: Motion Detection, Human Detection.
Monitoring	: Andriod, iOS, Windows
Slots	: 4G Sim Card / Micro SD Card
Storage	: Support Micro SD Card upto 256GB
Connection Mode	: 4G Sim Network
4G Frequency Band	: FDD-LTE: B1/B3/B5/B8; TDD-LTE: B34/B38/ B39/B40/B41

Note : *The values above are the max. frame rates of each stream; for multiple streams, the values will be subjected to the total encoding capacity.

Connectors	: RJ45 LAN Female Connector (100 Mbps) DC Power Input Female port Reset Button
Power Input	: DC12V/1A (DC 2.1mm Connector)
Working Temperature / Humidity	: 0-50° C RH Less than 95% (No Condensation)
Storage Temperature / Humidity	: -20° C to 60° C / 20% to 90% RH
Housing Type	: Plastic
Dimension (Dia x H)	: 10.5 x 9.4 cm
Net Weight	: 185 g

Configuration Procedure:

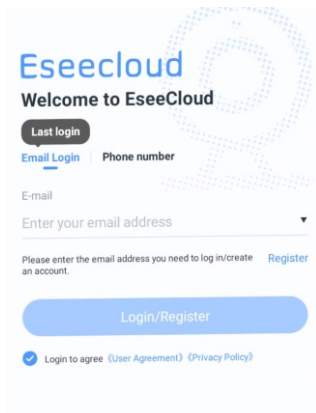
Step 1: Power ON the device

Step 2: Reset camera- Please press and hold the reset button for 5s until you hear a beep from the device.

Step 3: Scan QR code and download the latest app

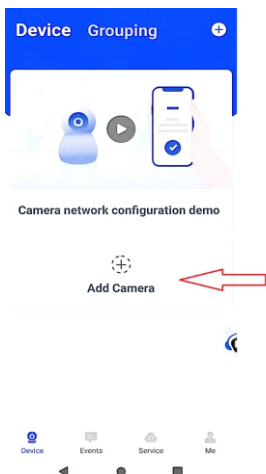


Step4: Open Esee cloud to Register and Login.



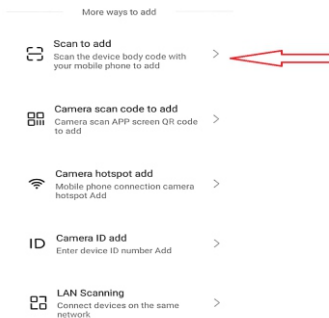
The image shows the Eseecloud login and registration interface. At the top, the 'Eseecloud' logo is displayed in blue, followed by the text 'Welcome to EseeCloud'. Below this, there is a 'Last login' button. The login options are 'Email Login' (which is underlined) and 'Phone number'. An 'E-mail' label is positioned above a text input field with the placeholder 'Enter your email address'. Below the input field, a message states: 'Please enter the email address you need to log in/create an account.' To the right of this message is a 'Register' link. A large blue button labeled 'Login/Register' is centered below the input field. At the bottom, there is a checked checkbox followed by the text 'Login to agree' and links to '《User Agreement》' and '《Privacy Policy》'.

Step5: Please select Add camera option



Step 6: Select Scan to add option

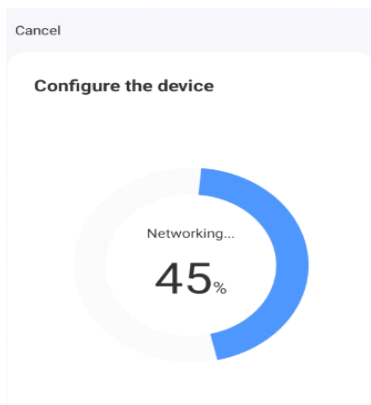
Discovery of nearby equipment



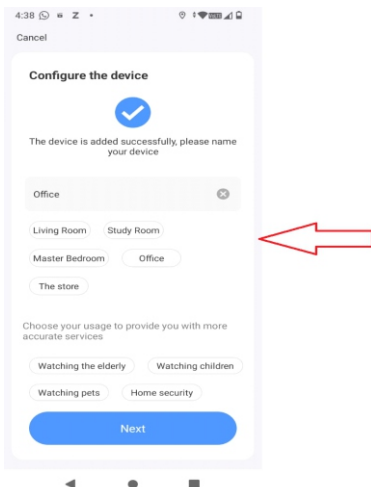
Step 7: Scan QR code on the body of the camera



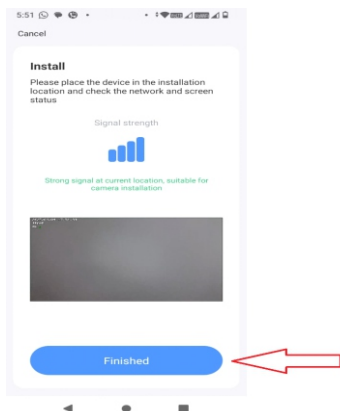
Step 8: Device will get configuring



Step9: After adding the device successfully, please name your Device



Step10: Please select Finished option



IMPORTANT:

Please save the QR code to the mobile Phone album for pairing the device in future