



8 Port POE Switch **ZEB 8PPM2UG**



User Manual

www.zebeye.com

Hello Zebee! Please read the following instructions carefully in order to use the product optimally.

Note:

- Do not expose the device to steam or dust.
- Do not install the device at position exposed to sunlight or in high temperature.
- Do not directly expose the device to humid environment.
- The device must be installed on solid and flat surface.
- Do not block air vent of the device or ventilation around the device.
- Do not place any object on the sides of the device to avoid ventilation issue.
- Do not disassemble the device.

Features

8 Self Adaptive PoE Ports

Dual Gigabit Uplink Ports

100m Extended Transmission (Max.)

120W Output (Max.)

Upto 30W Per Port

Full Duplex

High Data Rate

Wide Compatibility

Flexible Mounting

Dynamic Power Control

Short Circuit Protection

Voltage Protection

Anti Interference Capability
Lightning Protection

Specifications

Connector Type	: 8 Ports 10/100M PoE + 2 Ports 1000M Ethernet Uplink
Network Protocols	: IEEE802.3, IEEE802.3u, IEEE802.3x, IEEE802.3ab
PoE Parameters	
PoE Standard	: IEEE802.3af/at (15.4W) & IEEE802.3at (30W)
PoE Compatibility	: IEEE802.3af/at Self Adaptive
Power Pin Assignment	: MODE A [1/2(+), 3/6(-)]
Network Media	
10BASE-T	: Cat 3,4,5 UTP (<100 Meters)
10BASE-T	: Cat 6 UTP (=<250 Meters)
100BASE-TX	: Cat5 or more UTP (<100 Meters)
Power Supply	
Input	: AC110-240V, 50/60Hz
Output	: 30W Per Port
Power Budget	: 120W
Performance Specification	
Bandwidth	: 5.6Gbps

MAC	: 2K
Packet Buffer	
Memory	: 1Mbits
10M Packet	
Forwarding Rate	: 14880pps/port
100M Packet	
Forwarding Rate	: 148800pps/port
1000M Packet	
Forwarding Rate	: 148800pps/port
LED Indicator	
Power (Red)	: Lit - Powered, Unlit - No Power
Ethernet	: Flash - Data Transmit, Unlit - Disconnect
Working Environment	
Operating	
Temperature	: 25°C ~ 50°C
Storage	
Temperature	: 20°C ~ 70°C
Operating	: Max 15 ~ 90%,
Humidity	Non-Condensing
Storage Humidity	: Max 10 ~ 95%, Non-Condensing
Physical Parameter	
Product Dimension	
W x D x H	: 20.2 x 14 x 4.5 cm
Package Dimension	
W x D x H	: 20.5 x 19.5 x 4.8 cm
Net. Weight	: 1.05Kg

Transmission Distance

Data Transmission

Distance : 250 (Max.)

PoE distance upto
100meters with
10M via Cat.6

Switching Capacity : 2Gbps

Port Surge Protection : 6KV

Forwarding Mode : Store & Forward

Package Contents:

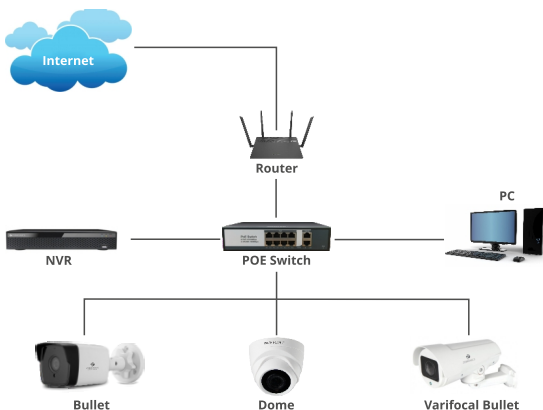
Ethernet Switch : 1U

Power Cord : 1U

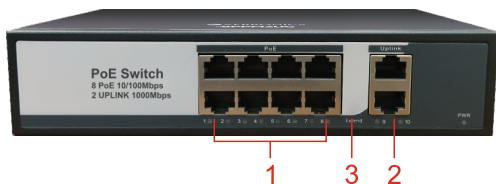
QR Code Guide : 1U

Typical Application & connection setup :

The typical application of the device is shown below.



Front Panel



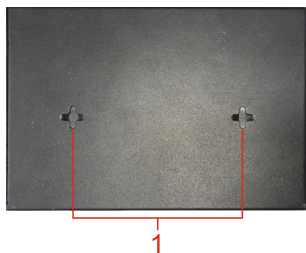
No.	Name	Description
1	8 Ports 10/100M PoE	8 x 10/100 Mbps self-adaptive RJ45 port
2	2 Ports 1000M Ethernet Uplink	2 x 1000 Mbps self-adaptive uplink port
3	Extend Switch	Transmission mode selection (100 meter POE, Extend 250 meter POE VLAN mode)

Back Panel



No.	Name	Description
1	Power port	Supports AC100-240V, 50/60Hz
2	Ground Terminal	Grounding terminal

Bottom Panel



No.	Name	Description
1	Wall mount hole	Supports the wall mount installation

ISO 9001:2015 Certified Company
www.zebeye.com

