



Hybrid Video Recorder (5 in 1)

ZEB **16CHV2S4TA5M**



User Manual

www.zebronics.com

Hello Zebee! Please read the following instructions carefully in order to use the product optimally.

Safety Instruction:

- Proper configuration of all passwords and other security settings is the responsibility of the installer and/or end-user.
- In the use of the product, you must be in strict compliance with the electrical safety regulations of the nation and region.
- Firmly connect the plug to the power socket. Do not connect several devices to one power adapter. Power off the device before connecting and disconnecting accessories and peripherals.
- Shock hazard! Disconnect all power sources before maintenance.
- The equipment must be connected to an earthed mains socket-outlet.
- The socket-outlet shall be installed near the equipment and shall be easily accessible.
- Indicates hazardous live and the external wiring connected to the terminals requires installation by an instructed person.
- Never place the equipment in an unstable location. The equipment may fall, causing serious personal injury or death.
- Input voltage should meet the SELV (Safety Extra Low Voltage) and the LPS (Limited Power Source) according to the IEC62368.

- High touch current! Connect to earth before connecting to the power supply.
- If smoke, odor or noise rise from the device, turn off the power at once and unplug the power cable, and then please contact the service center.
- Use the device in conjunction with an UPS, and use factory recommended HDD if possible.
- This product contains a coin/button cell battery. If the battery is swallowed, it can cause severe internal burns in just 2 hours and can lead to death.
- This equipment is not suitable for use in locations where children are likely to be present.
- CAUTION: Risk of explosion if the battery is replaced by an incorrect type.
- Improper replacement of the battery with an incorrect type may defeat a safeguard (for example, in the case of some lithium battery types).
- Do not dispose of the battery into fire or a hot oven, or mechanically crush or cut the battery, which may result in an explosion.
- Do not leave the battery in an extremely high temperature surrounding environment, which may result in an explosion or the leakage of flammable liquid or gas.

- Do not subject the battery to extremely low air pressure, which may result in an explosion or the leakage of flammable liquid or gas.
- Dispose of used batteries according to the instructions.
- Keep body parts away from fan blades and motors. Disconnect the power source during servicing
- Keep body parts away from motors. Disconnect the power source during servicing.

Preventive and Cautionary Tips Before connecting and operating your device, please be advised of the following tips:

- The device is designed for indoor use only. Install it in a well-ventilated, dust-free environment without liquids.
- Ensure recorder is properly secured to a rack or shelf. Major shocks or jolts to the recorder as a result of dropping it may cause damage to the sensitive electronics within the recorder.
- The equipment shall not be exposed to dripping or splashing and that no objects filled with liquids shall be placed on the equipment, such as vases.
- No naked flame sources, such as lighted candles, should be placed on the equipment.

- The ventilation should not be impeded by covering the ventilation openings with items, such as newspapers, table-cloths, curtains, etc. The openings shall never be blocked by placing the equipment on a bed, sofa, rug or other similar surface.
- For certain models, ensure correct wiring of the terminals for connection to an AC mains supply
- For certain models, the equipment has been designed, when required, modified for connection to an IT power distribution system.
- identifies the battery holder itself and identifies the positioning of the cell(s) inside the battery holder.
- + identifies the positive terminal(s) of equipment which is used with, or generates direct current. + identifies the negative terminal(s) of equipment which is used with, or generates direct current.
- Keep a minimum 200 mm (7.87 inch) distance around the equipment for sufficient ventilation.
- For certain models, ensure correct wiring of the terminals for connection to an AC mains supply.
- Use only power supplies listed in the user manual or user instruction.

- The USB port of the equipment is used for connecting to a mouse, keyboard, USB flash drive only
- Use only power supplies listed in the user manual or user instruction.
- Do not touch the sharp edges or corners.
- When the device is running above 45 °C (113 °F), or its HDD temperature in S.M.A.R.T. exceeds the stated value, please ensure the device is running in a cool environment, or replace HDD(s) to make the HDD temperature in S.M.A.R.T. below the stated value.

Specifications:

Operating System	: Embedded LINUX
Video Input	: 16 Channel IP / 8 IP + 8 Analog / 16 Channel Analog
Total Bandwidth	: 80 Mbps
Video Output	: 1x HDMI, 1x VGA, 1x Coaxial
Audio Input	: IP Camera Audio / Analog Camera Audio + RCA Audio Input
Audio Output	: Support HDMI Audio Output, Audio Output (3.5mm jack)
External Ports	: RJ45 - 10/100 port x 1 USB - 2 x USB 2.0 Ports
Display Resolution	: 1920×1080, 1440×900, 1280×1024.

Display Split	: Support Multi-screen split; 1/4/8/9/16 screen real-time preview
Video Compression	: H.265+/H.265/H.264 decoding format
Recording Resolution:	1080P
Record Mode	: Timing, Manual and Motion Detection
Storage	: 2 x SATA Storage devices with upto 6TB compatibility (6TB + 6 TB)
Network Protocols	: TCP/IP, DHCP, DDNS, NTP, SMTP
CMS Software	
Compatibility	: Yes
Win 10 and Higher	
Compatibility	: Yes
Multiple Browser	
Compatibility	: Yes
Motion Detection	
Notification	: Yes
Alerts via p2p	
Connected Devices	: Yes
Smart Phone	
Compatibility	: Yes using apps TS eye, XVR View
Power Input	: DC 12V, 2A (External Adapter)
Working	
Temperature	: -10°C to 55°C
Body Type	: Metal

Physical Parameter (W x D x H)

Product Dimension : 32 x 24.5 x 5 cm

Package Dimension : 44.3 x 8.3 x 20.9 cm

Net. Weight : 1.170 Kg

Package Contents:

Recorder : 1 U

Power Adapter : 1 U

Mouse : 1 U

Hard Disk

Mounting Kit : 1 Set

QR Code User Guide: 1 U

Setup Guide

*Basic Operation

Default User and IP Address

- Default administrator account: admin.
- Default password: (password column has to be empty)



- Default IPv4 address: 192.168.1.18

Warning

We highly recommend you to create a strong password of your own choosing (using a minimum of 8 characters, including at least three kinds of following categories: upper case letters, lower case letters, numbers, and special characters) in order to increase the security of your product. And we recommend you change your password regularly, especially in the high security system, changing the password monthly or weekly can better protect your product.

*HDD Installation

Steps:

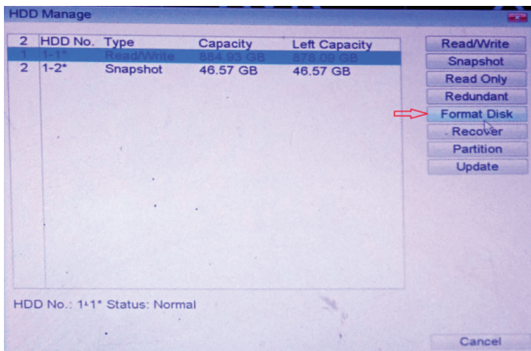
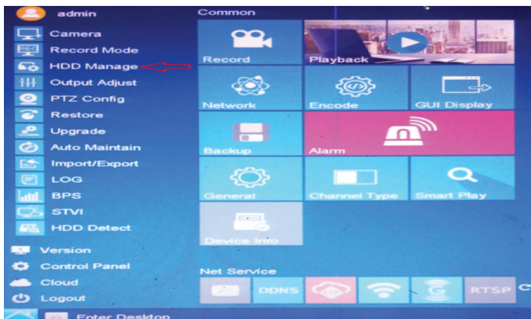
1. Open the chassis covered by unscrewing the screws on the side of the XVR case.
2. Connect HDD SATA cable and Power cable



3. Secure the hard disk to the hard disk screw holes on the baseplate.
4. Cover the XVR cover and fasten the cover with screws.

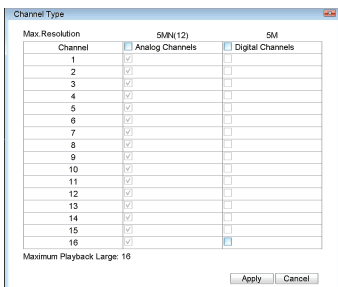
*HDD Configuration:

Ensure the video recorder storage media is well. You can install one HDD (supports upto 6TB) and need to format for the first time use of HDD,



*Signal Input Configuration:

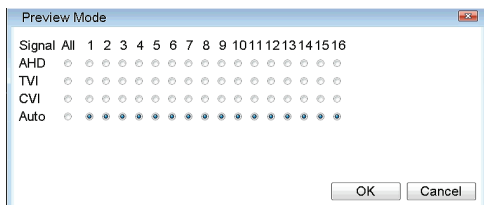
You can configure the analog and IP signal input types, disabling one analog channel can add one IP channel



*Analog Technologies:

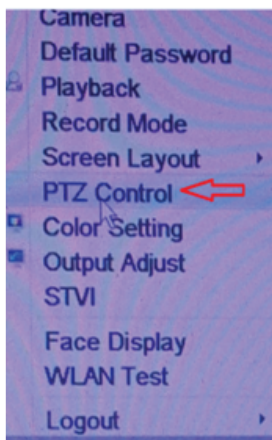
Four types of analog signal inputs including Turbo HD, AHD, HDCVI, and CVBS can be connected randomly for the channel.

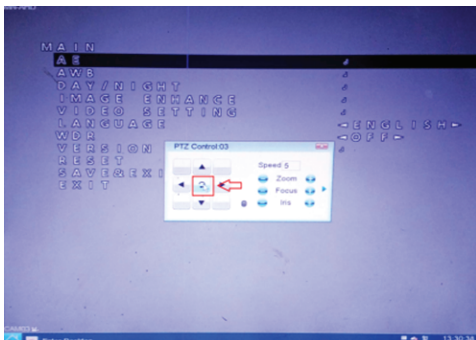
Option1:



Option2:

- Open the connected camera,
- Right click the Mouse and select the PTZ control option





*IP Technology:

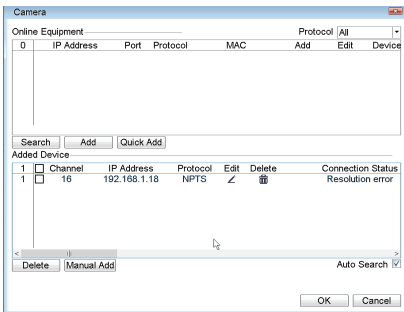
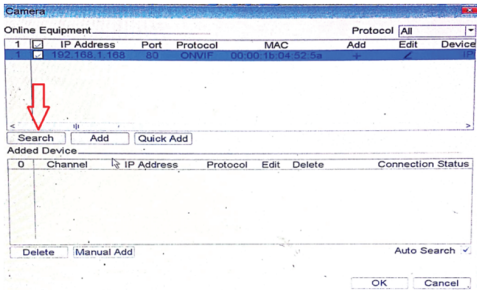
- A network camera can be connected for the channel.
- You can view the maximum network camera accessible number in Max. IP Camera Number.

Add IP cameras -

- Before you can get live video or record the video files, you must add the network cameras to the connection list of the device.
- Before You Start Ensure the network connection is valid and correct and the IP camera to add has been activated.

Add Automatically Searched Online Network Camera:

- Click Homepage and select camera option
- Next select the search option and you can find IP of the Camera. Then select the IP and click the Add option



- Ensure the username and password of the camera

*P2P CONFIGURATION:

1. Configure with APP TSEYE

TSEYE-provides mobile phone application and platform service to access and manage your video recorder, which enables you to get a convenient remote access to the surveillance system.



2. Please select cloud option in the Home page .



3. Find the app QR code for Android and ios



4. To check the connection status of network, select version option in the Homepage and find the status

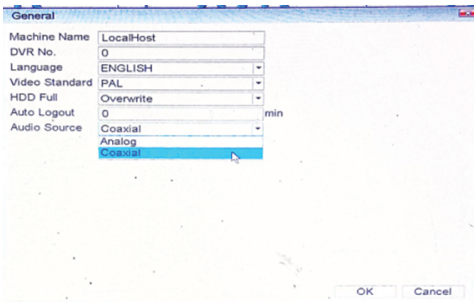


*Audio:

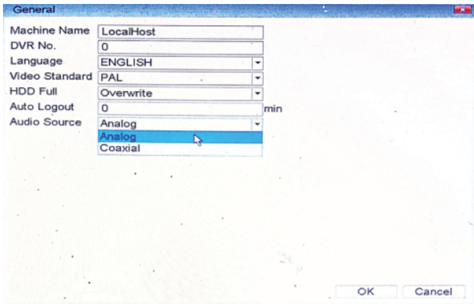
1. Select General option in the Home Page



2. For Inbuild mic select coaxial option



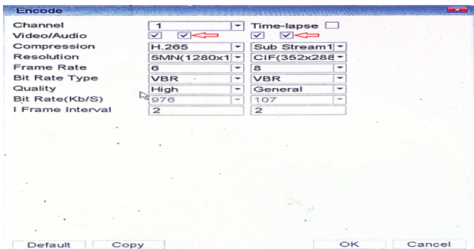
3. For External Mic select Analog option



4. Select Encode Option In the Home Page



5. Enable Audio Option

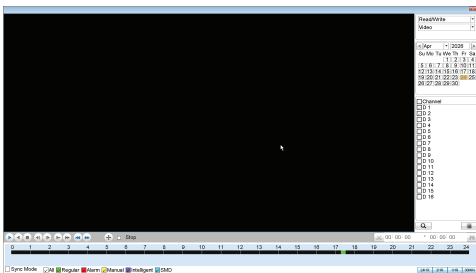


*Audio:

1. Please select playback option in the Home page.

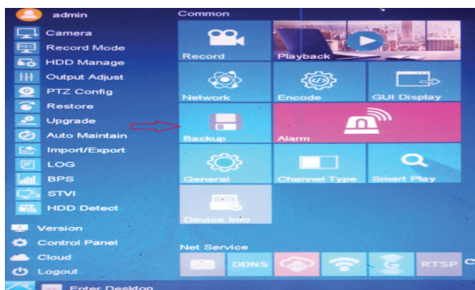


2. Select the date and channel which need to play back.
3. Next can search the time which is required at the bottom of the time segment.



*Backup:

1. Select Backup option in the Home page



2. Insert USB drive in XVR at the back side of the USB port and detect the usb drive.

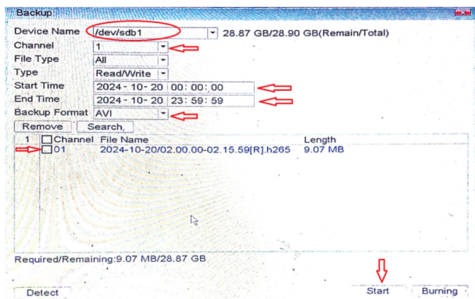
3. Select the channel number of which channel backup required.

4. Select Start time and End time of the backup required.

5. Select the backup Format as AVI.

6. Select the file which needs to backup.

7. Select Start option for Backup the data.



ISO 9001:2015 Certified Company
www.zebronics.com

