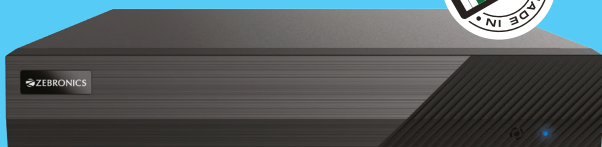




Hybrid Video Recorder (5 in 1)

ZEB HDXVR-5016



Hello Zebee!

Please read the following instructions carefully
in order to use the product optimally.

User Manual

www.zebronics.com

Safety Instruction:

- Proper configuration of all passwords and other security settings is the responsibility of the installer and/or end-user.
- In the use of the product, you must be in strict compliance with the electrical safety regulations of the nation and region.
- Firmly connect the plug to the power socket. Do not connect several devices to one power adapter. Power off the device before connecting and disconnecting accessories and peripherals.
- Shock hazard! Disconnect all power sources before maintenance.
- The equipment must be connected to an earthed mains socket-outlet.
- The socket-outlet shall be installed near the equipment and shall be easily accessible.
- Indicates hazardous life and the external wiring connected to the terminals requires installation by an instructed person.
- Never place the equipment in an unstable location. The equipment may fall, causing serious personal injury or death.
- Input voltage should meet the SELV (Safety Extra Low Voltage) and the LPS (Limited Power Source) according to the IEC62368.

- High touch current! Connect to earth before connecting to the power supply.
- If smoke, odor or noise rise from the device, turn off the power at once and unplug the power cable, and then please contact the service center.
- Use the device in conjunction with an UPS, and use factory recommended HDD, if possible.
- This product contains a coin/button cell battery. If the battery is swallowed, it can cause severe internal burns in just 2 hours and can lead to death.
- This equipment is not suitable for use in locations where children are likely to be present.
- CAUTION: Risk of explosion if the battery is replaced by an incorrect type.
- Improper replacement of the battery with an incorrect type may defeat a safeguard. (for example, in the case of some lithium battery types)
- Do not dispose of the battery into a fire or a hot oven, or mechanically crush or cut the battery, which may result in an explosion.
- Do not leave the battery in an extremely

high temperature surrounding environment, which may result in an explosion or the leakage of flammable liquid or gas.

- Do not subject the battery to extremely low air pressure, which may result in an explosion or the leakage of flammable liquid or gas.
- Dispose of used batteries according to the instructions.
- Keep body parts away from fan blades and motors.
- Disconnect the power source during servicing.
- Keep body parts away from motors. Disconnect the power source during servicing.

Preventive and Cautionary Tips Before connecting and operating your device, please be advised of the following tips:

- The device is designed for indoor use only. Install it in a well-ventilated, dust-free environment without liquids.
- Ensure the recorder is properly secured to

a rack or shelf. Major shocks or jolts to the recorder as a result of dropping it may cause damage to the sensitive electronics within the recorder.

- The equipment shall not be exposed to dripping or splashing and that no objects filled with liquids shall be placed on the equipment, such as vases.
- No naked flame sources, such as lighted candles should be placed on the equipment.
- The ventilation should not be impeded by covering the ventilation openings with items, such as newspapers, table-cloths, curtains, etc. The openings shall never be blocked by placing the equipment on a bed, sofa, rug or other similar surface.
- For certain models, ensure correct wiring of the terminals for connection to an AC mains supply.
- For certain models, the equipment has been designed, when required, modified for connection to an IT power distribution system.
- Identifies the battery holder itself and identifies the positioning of the cell(s)

inside the battery holder. + identifies the positive terminal(s) of equipment which is used with, or generates direct current. + identifies the negative terminal(s) of equipment which is used with, or generates direct current.

- Keep a minimum 200 mm (7.87 inch) distance around the equipment for sufficient ventilation.
- For certain models, ensure correct wiring of the terminals for connection to an AC mains supply.
- Use only power supplies listed in the user manual or user instruction.
- The USB port of the equipment is used for connecting to a mouse, keyboard, USB flash drive only.
- Use only power supplies listed in the user manual or user instruction.
- Do not touch the sharp edges or corners.
- When the device is running above 45 °C (113 °F), or its HDD temperature in S.M.A.R.T. exceeds the stated value, please ensure the device is running in a cool environment, or replace HDD(s) to make the HDD temperature in S.M.A.R.T. below the stated value.

Features :

- 16 Channel XVR Recorder
- Records with H.265 and H.264 Decoding Formats
- Supports Cameras up to 5 Megapixels
- ONVIF
- Smartphone P2P Connectivity
- SATA Storage Supporting up to 8TB
- Supports Simultaneous Real-Time Viewing on up to 25 Channels
- Video Output up to 1080P Resolution
- Compatible with CMS (Central Management Software)

Specification :

Operating System	: Embedded LINUX
Video Input	: 16 Channel Analog + 8 Channel IP 24 Channel IP
Total Bandwidth	: Incoming 16 Mbps (max.80) / Outgoing 80 Mbps
Video Output	: 1 x HDMI, 1 x VGA , 1 x BNC
Audio Input	: IP camera audio / Analog camera audio + RCA audio Input
Audio Output	: Support HDMI audio output, audio output (RCA)
External Ports	: RJ45 - 10/100 port x 1 USB - 2 x USB 2.0 Ports

Display Resolution	: 1920×1080, 1280×1024, 1024×768 , CVBS
Display Split	: Support multi-screen split; 1/4 screen real-time preview
Privacy Masking	: Yes
Video Compression	: H.264/H.265 decoding format
Recording Resolution	: 8MP Lite / 5MP Lite / 4MP Lite / 1080P / 1080P Lite / 720P / WD1
Record Mode	: Timing, Manual, Motion Detection & AI Recording
Storage	: 1 x SATA Storage devices with upto 10TB compatibility
Network Protocols	: TCP/IP, HTTP, HTTPS, 802.1x, DHCP, DDNS, RTP, RTSP, RTCP, NTP, UPnP, SMTP, Ipv6, UDP, WebSocket, PPPoE, SNMP, IGMP
CMS software Compatibility	: Yes
Win 10 and higher compatibility	: Yes
Multiple browser compatibility	: Yes
Motion Detection	

notification : Yes
Alerts via p2p
connected devices : Yes
Smart Phone
Compatibility : Yes
Power Input : DC 12V, 2A (External Adapter)
Working Temperature: -10°C to 50°C
Body Type : Metal
Physical Parameter
Product Dimension : 25.5 x 22.4 x 4.2 cm
(W x D x H)
Net. Weight : 946 g

Package Content:

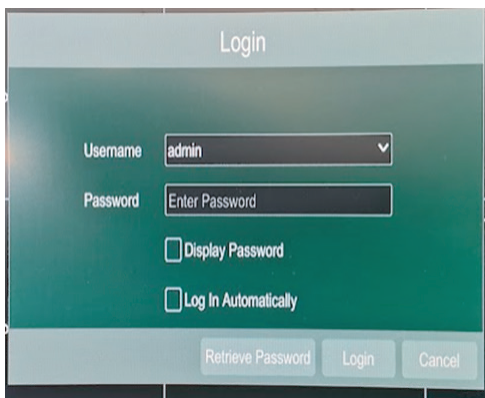
Recorder : 1 U
Power Adapter : 1 U
Mouse : 1 U
Hard Disk
Mounting Kit : 1 U
QR Code Guide : 1 U

Setup Guide

Basic Operation:

Default User and IP Address

- Default administrator account: admin
- Default password: admin

A login dialog box with a light blue header containing the word "Login". The main area has a green gradient background. It contains a "Username" label next to a dropdown menu showing "admin" with a downward arrow. Below that is a "Password" label next to a text input field containing "Enter Password". Under the password field are two checkboxes: "Display Password" and "Log In Automatically", both of which are currently unchecked. At the bottom, there is a light blue bar with three buttons: "Retrieve Password", "Login", and "Cancel".

Login

Username admin

Password Enter Password

☐ Display Password

☐ Log In Automatically

Retrieve Password Login Cancel

- Default IPv4 address: 192.168.1.200

Warning

We highly recommend you to create a strong password of your own choosing (using a minimum of 8 characters, including at least three kinds of following categories: upper case letters, lower case letters, numbers, and special characters) in order to increase the security of your product. And we recommend you change your password regularly, especially in the high security system, changing the password monthly or weekly can better protect your product.

HDD Installation

Steps:

1. Open the chassis covered by unscrewing the screws on the side of the XVR case.
2. Connect HDD SATA cable and Power cable.

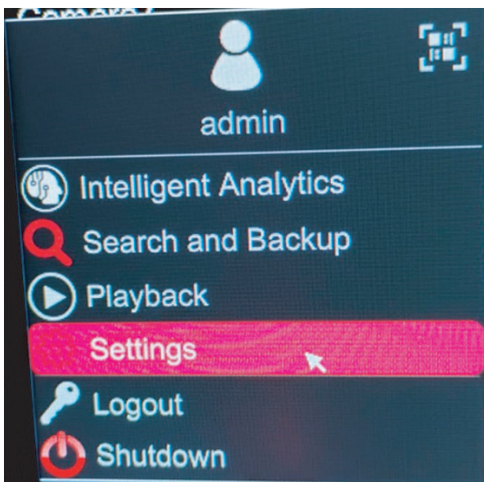


3. Secure the hard disk to the hard disk screw holes on the baseplate.
4. Cover the XVR cover and fasten the cover with screws.

HDD Configuration:

Ensure the video recorder storage media is well. You can install one HDD (supports up to 8TB) and need to format for the first time use of HDD,

1.First click on Settings Icon.

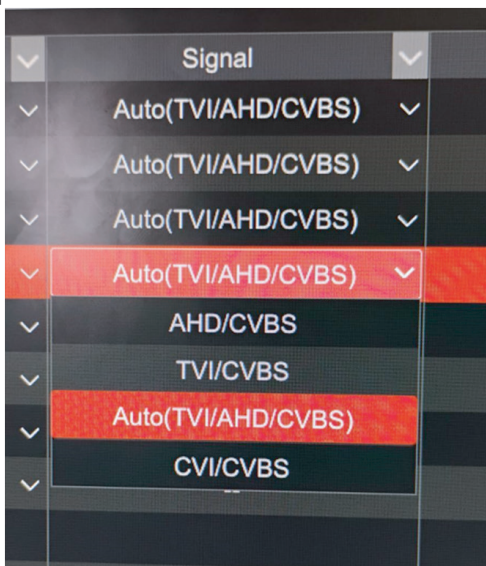


2.Then click once again on the Disk Management under Disk.



3.Then choose the Disk you have selected then click on Format

Option 1:



Option 2:

- Open the connected camera,
- Right click the mouse and select the



IP Technology:

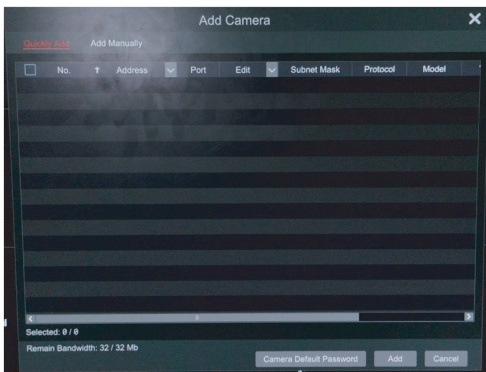
- A network camera can be connected for the channel.
- You can view the maximum network camera accessible number in Max. IP Camera Number.

Add IP cameras

- Before you can get live video or record the video files, you must add the network cameras to the connection list of the device.
- Before You Start Ensure the network connection is valid and correct and the IP camera to add has been activated.

Add Automatically Searched Online Network Camera:

- Click Settings and select camera option
- Then you can able to add the IP or digital cameras automatically from the below windows it will show the list of cameras available.



- Ensure the username and password of the camera.

P2P Configuration:

- Configure with ZEB-NexaShield App.
ZEB-NexaShield App - provides mobile phone application and platform service to access and manage your video recorder, which enables you to get a convenient remote access to the surveillance system.

 **ZEBRONICS**

Since 1997



 **NEXA
SHIELD**
Series



Share your devices

Your account allows you to share video channels with whoever you want, you can remove the share whenever you want

Local

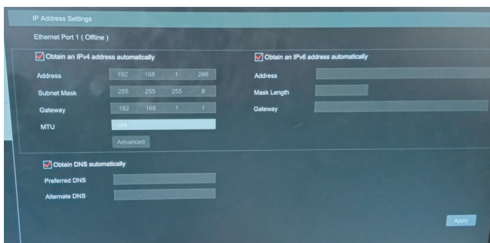
Start



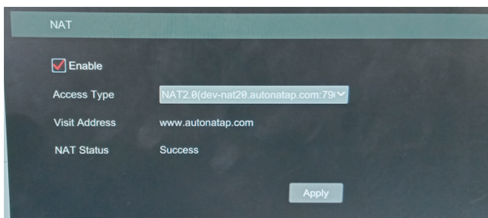
- Pop-Up and select the TCP/IP.



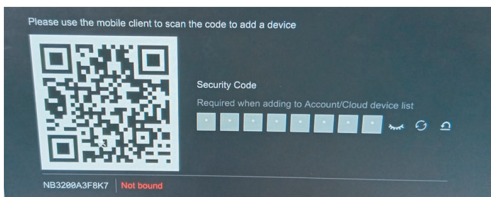
- And check the Ethernet Port IPv4 address & DNS.



- Enable the NAT click on the apply button and then check the NAT Status should be displaying success.

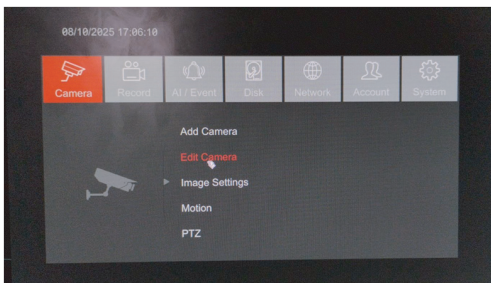


- Scan the below QR Code to connect with your mobile devices.

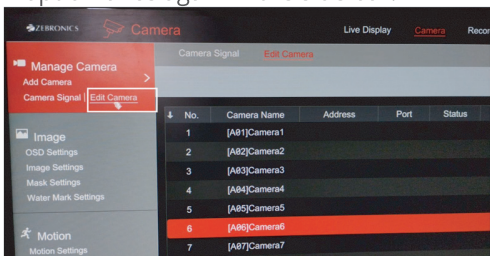


Audio

- Select the Settings and then click on the Edit camera option under camera.



- Then you can click on the Edit camera option once again in the side bar.



- Then you can view the Audio Over Coax either to Turn it On/Off.

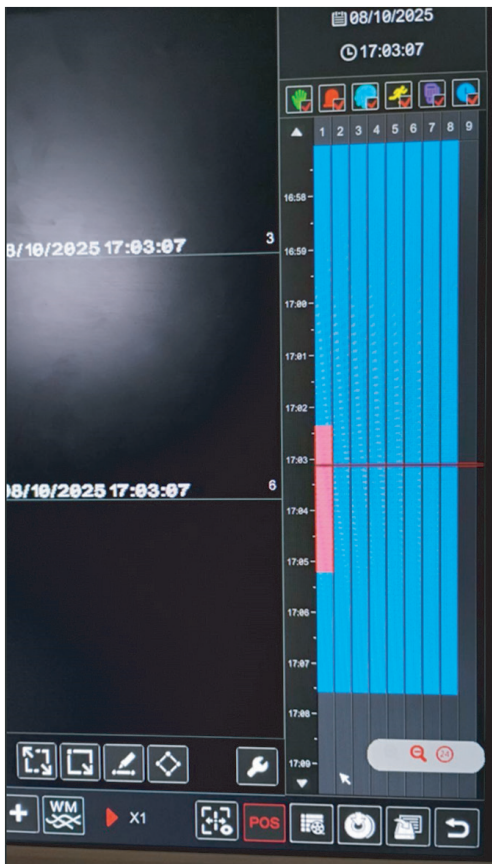
[illegible]

Note:

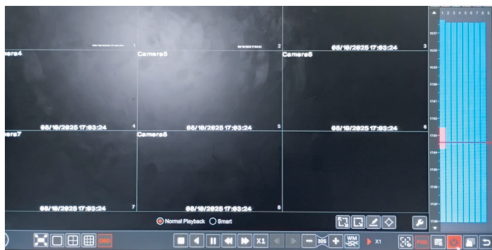
Only the TVI Mode will be able to use the audio function.

Playback:

1. Please select the playback option in the Home page.
2. Select the date and channel which need to be played back.

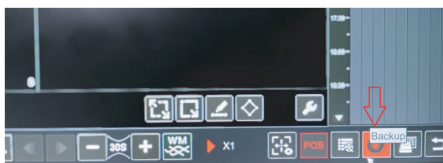
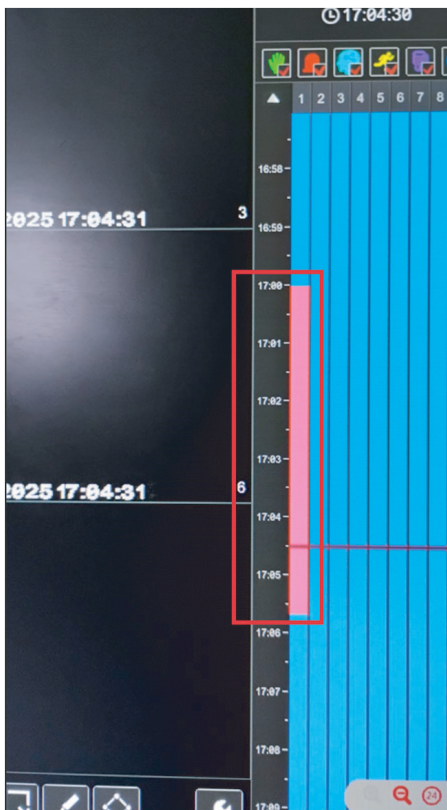


3. Next can search the time which is required at the bottom of the time segment.



Backup:

1. Select Playback option in the Home page. Then Drag the cursor in the channel from starting time to end time. Then click on the Backup option.



2. Insert USB drive in XVR at the back side of the USB port and detect the usb drive.
3. Select the channel number of which channel backup required.
4. Select Start time and End time of the backup Required.
5. Select the backup Format as AVI.
6. Select the file which needs to be backed up.
7. Select Backup option for Backup the data.

