



Smart Wireless Video Door Phone  
**VDB200**



## User Manual

[www.zebronics.com](http://www.zebronics.com)

## Dear Customer,

Thank you for buying Zebronics Smart Wireless Video Door Phone please go through the following instructions to install the App and for a smooth operation.

### Specifications

Image Sensor Config.	: 3MP 1/2.8" CMOS
Storage	: 16MB
SDRAM	: 64MB DDR2 (Built-in CPU)
Battery Type	: Lithium battery Power Supply
Wifi	: 2.4Ghz
Wifi Security	: WPA2 - PSK
Image Resolution	: 1920 x 1080
Frame	: 20 FPS
Input Voltage	: DC 5V, 2A max.
Effective Area	
Horizontal	: 115°,
Diagonal	: 140°,
Vertical	: 62°
Lens	: 3.2mm @F2.4
Lens Mount	: M12
PIR Working	: 6m in Distance
Distance (Max)	(Sensitivity High / Medium / Low Adjustable)
Night Vision	: up to 7m in distance
Power Consumption	: ≤ 1W
Operating Temperature	: 10 °C to +50 °C

Relative Humidity	: < 95%
Storage support mSD (Max)	: 128GB
Indoor Unit & Outdoor Unit Range	
With obstacles	: 10m
Without obstacles	: 40m
Indoor Unit Net.	
Weight	: 58g
Outdoor Unit Net.	
Weight	: 230g
Microphone	: -32±3db
Chimes	: 60 tones
Net dimension (W x D x H)	
Indoor Unit Dimension	: 6.4 x 6.8 x 9.4 cm
Outdoor Unit Dimension	: 5 x 3.4 x 14 cm

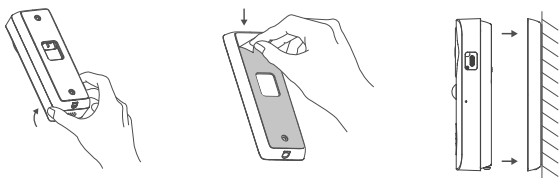
### **Package Contents:**

QR code Guide	: 1U
Indoor Unit	: 1U
Outdoor Unit	: 1U
Mounting Kit	: 1U
Reset Tool	: 1U
Type C Cable	: 1U

## Battery Powered :

### Installation method 1: glue on the wall and fix it

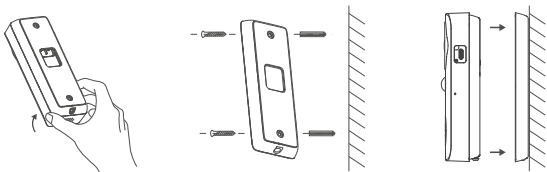
1. Open the doorbell and back cover.
2. Tear off the red adhesive sticker at the bottom of the back cover, and then stick the back cover to a smooth wall (such as glass, ceramic tile, latex wall paint, etc.)
3. Turn on the switch, align the doorbell with the back cover, then buckle the doorbell to complete the installation.



*Note: The adhesive can only play 100% viscosity after 24 hours after it is glued.*

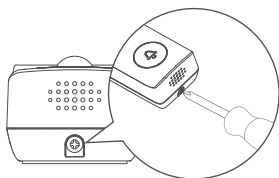
### Installation method 2: Fix on the wall with screws

1. Open the doorbell and back cover.
2. Drill two pilot holes on the wall plate, then insert plastic plugs into the holes, and fix the back cover with screws.
3. Turn on the switch, align the doorbell with the back cover, then buckle the doorbell to complete the installation.



### Installation anti-dismantling diagram:

Install screws to lock the doorbell and rear panel.



### How to pair and unpair the indoor ding-dong unit and the door-bell

**1. Pair:** Plug the indoor ding-dong unit into power and wait until blue LED is on, then press the doorbell button. When blue LED on indoor ding-dong unit flashes, the pairing is completed. (You can switch the ringtone by pressing music button on the indoor ding-dong unit)

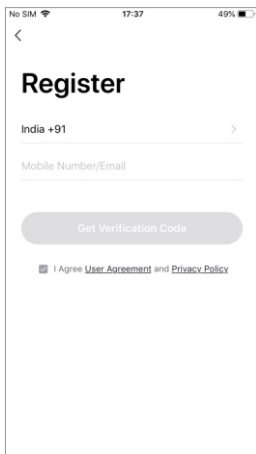
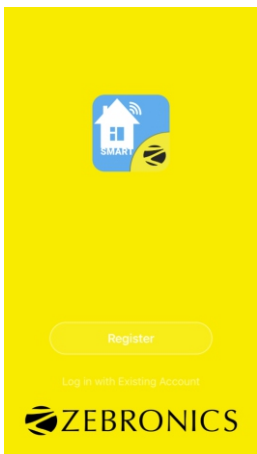
**2. Unpair:** Unplug the paired indoor ding-dong unit, and press the volume button, then plug into the power again, release until the blue LED is always on. The unpaired is completed.

## 1. Download the App

Scan QR code to download ZEB-HOME app



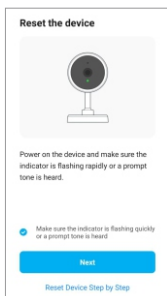
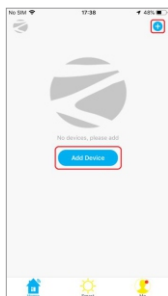
## 2. Register with your mobile number/ Email then login



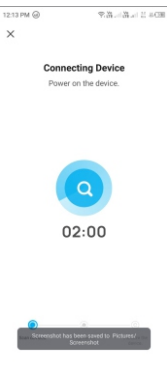
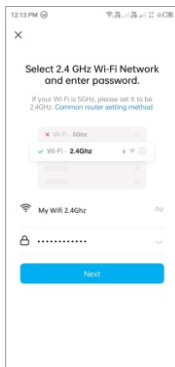
## 3. Configuration : QR code network configuration

Tap "Add Device" or the icon "+" in the top right corner Choose "Smart Doorbell" in the

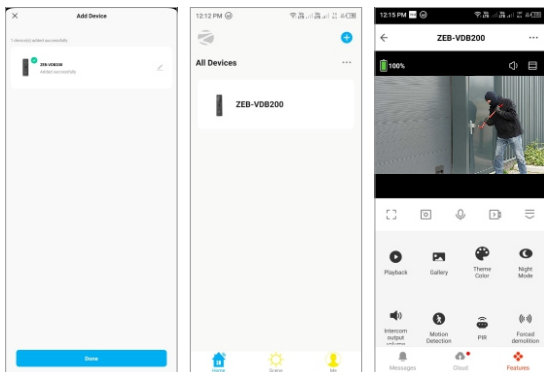
Device type Make sure the indication is flashing quickly, and click “next step”



Enter your WiFi password and click “+” when you tap Continue the mobile phone displays a QR code, hold the camera 15 to 20cm in front of the mobile phone for the camera to scan the QR code Please click “heard the beep” after hearing the beep tone



- Please wait for the reset process to complete and stay on the same screen for until the setup completes

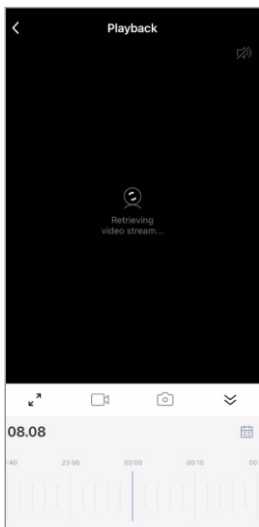
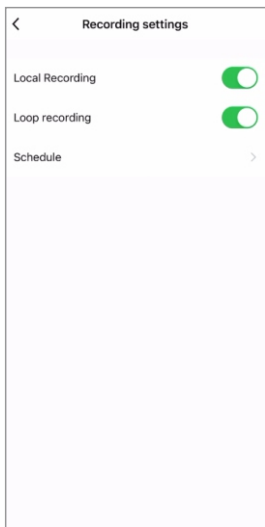


Once the device successfully added, you can tap on the device name to view more settings to personalise the doorbell.

### **External Memory recording Function:**

- Open the rear panel and on the side panel open the rubber protection to find the ON/OFF button and the slot for mSD memory card.
- After inserting the mSD, the storage device will be detected.
- In the app interface you can find the settings > record settings.
- To view the recordings you can tap the playback icon to view the recordings.





## Reset Procedure

Press and hold the button inside the RST pin hole next to the On/Off button, using a safety pin/sim eject tool for 3-5 secs until you hear the beep tone.

### Special Note:

1. Keep the doorbell, indoor ding-dong unit and router as close as possible (to avoid network failure due to too far).
2. The installation height of the doorbell is 1.2 - 1.5 meters .
3. It should be installed on non-metallic materials (to avoid signal shielding), and it is recommended to stick it on the side wall of the door.

## VII. Common Problem

### 1. Camera LED indicator and buzzer status:

Status	LED light	Buzzer
System startup	Red light flashes	None
Waiting for distribution network	Red light flashes	None
Scanning QR code	Red light flashes	None
Scanning the QR code successfully	LED light is off	Beep Sound
Connecting WiFi	LED light is off	None
Connect to WiFi successfully	LED light is off	None
Failed to connect WiFi	Red light flashes	None
Reset success	Red light flashes	Beep Sound
PIR wake up	Blue light flashes	None
Wake up by doorbell	Blue light flashes	None
Low battery reminder	Red light keep on 5s	None

### 2. Note: Make sure the camera is connected to WiFi in the 2.4GHz band.

5GHz WiFi is not supported. Please make sure that the WiFi signal of the wireless router connected to the camera is within the coverage.

### 3. Is the camera fever normal?

When the camera is charging, a certain degree of fever will occur, which is normal. Please rest assured. Applicable temperature range: -10°C to +50°C.

### 4. What are the things to be aware of when using the camera?

In order to obtain better night vision imaging effects, avoid using the camera with reflective objects such as glass and white walls on the front and side of the lens to avoid

causing the screen to be bright in the vicinity or white in the distance.

To know more about Terms and conditions for warranty policy, please visit

<https://zebronics.com/pages/warranty-policy>

**ISO 9001:2015 Certified Company**  
**www.zebronics.com**

