



Video Door Phone

**ZEB VDP7100**



# User Manual

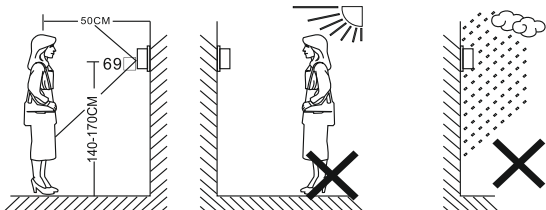
[www.zebronics.com](http://www.zebronics.com)

## **Dear Customer,**

Thank you for buying Zebronics Video Door Phone. Please go through the following instructions for a smooth operation.

### **Safety Instructions**

- ◆ Keep the indoor unit away from high temperature such as near an oven or in direct sunlight and high humidity areas such as a bathroom and greenhouse.
- ◆ Do not install the indoor unit close to a television or any item that could cause interference or jamming of signal to the intercom.
- ◆ Do not touch the unit with wet hands.
- ◆ Avoid throwing, dropping or hitting the units.
- ◆ Clean the camera or screen with a soft cloth.
- ◆ Do not use detergent, thinner, volatile or corrosive liquid.
- ◆ Do not expose the camera of the outdoor unit to direct sunlight.
- ◆ To use the product make sure it is barrier free and there is no interference.
- ◆ Avoid powering the unit off while recording otherwise the data can be lost easily.
- ◆ This Product can be connected to an external UPS for continuous operation during power outages.
- ◆ Fix the unit 1.4m - 1.7m high from the ground (according to the camera effect) so as to avoid direct sunshine.



## Features

7" Large Screen

IP65-Rated Waterproofing for Outdoor Unit

Door Lock Release

IR Night Vision

Do Not Disturb Mode

30 Melodic Tones

Enables Video Monitoring (for up to 1 minute)

Two-way Talkback

Connect Upto 2 Outdoor Unit

## Specifications

### Outdoor Unit

Image Sensor Config. : 2MP 1/3" CMOS

Image Resolution : 960 x 576

Frame Rate : 25 FPS

Lens : 1/3" @F2.94mm

Night Vision : up to 5m

Net. Weight : 105g

Product Dimension : 5 x 2.8 x 13.6 cm  
(W x D x H)

Motion Detection : No

Voice Messages : NA

Surface Mount : Yes

Adjustable Microphone and Speaker Volume	: Yes
LED for Night Vision	: IR LED
Angular Bracket	: Yes
Wifi Enabled	: No
Housing	: Plastic
IP level	: IP65
View Angle	: 120° Wide Angle

### **Indoor Unit**

Screen Size	: 17.78 cm
Screen Resolution	: 1024x600 pixel
Brightness Setting	: Adjustable
Contrast Setting	: Adjustable
Image Adjustment	: Yes
Colour Setting	: Adjustable
Volume Adjustment	: Yes
Night Vision	: IR Night Vision
Talkback Type	: Yes
Door Lock Release	: Yes
External SD Card Support	: No
Image Storage	: No
Image Storage Capacity	: NA
Video Storage	: No
Video Storage Capacity	: NA
Recorded Video Length	: NA
Indoor Monitors	: 1 Indoor Unit
Input Power	: DC 14.5V
Melody	: 30 Melody Options
Digital Photo Frame	: No
SDRAM (Built-in CPU)	: 4MB DDR2



Effective Area	: Horizontal 120°, Diagonal 145°, Vertical 65°
Microphone	: -42dB
Relative Humidity	: < 90%
Input Voltage	: DC 14.5V, 1A max.
Power Consumption	: Static State $\leq 3W$ , Working State $\leq 10W$
Operating Temperature	: -20 °C to 50 °C
Net. Weight	: 287g
Product Dimension	: 18.1 x 2.5 x 13.2 cm (W x D x H)

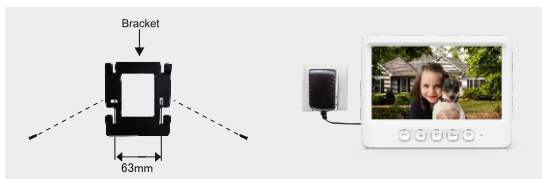
### **Package Contents:**

Indoor Unit	: 1U
Outdoor Unit	: 1U
Mounting Kit	: 1SET
Connectors Kit	: 1SET
Power Adaptor	: 1U
QR Code Guide	: 1U

## Installation

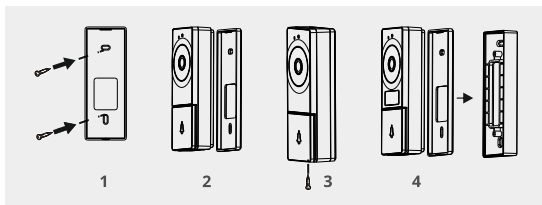
### Indoor Unit

1. Screw the bracket on the wall.
2. Hang the unit on the bracket after finishing the connection. Plug the two ends of the jack of the power adapter into the sockets of AC power and the unit separately.

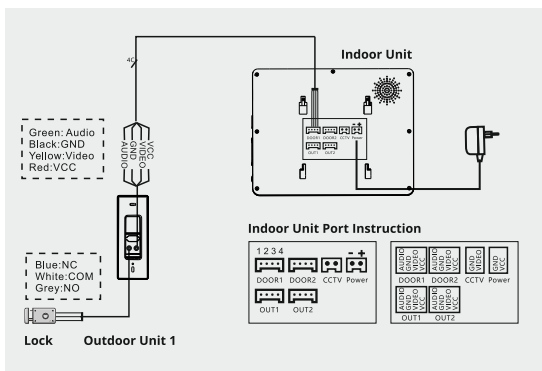


### Outdoor Unit

1. Drill proper holes in the wall, plug up the screw holes with silicone caps.
2. Refer to the wiring diagram to do the wire connection.
3. Hang the outdoor unit to the mounting bracket, then fix it with screws.
4. If you need install the outdoor unit on angular bracket, please fix the angular bracket to the wall first, then install the outdoor unit on the angular bracket.



## Wiring diagram:

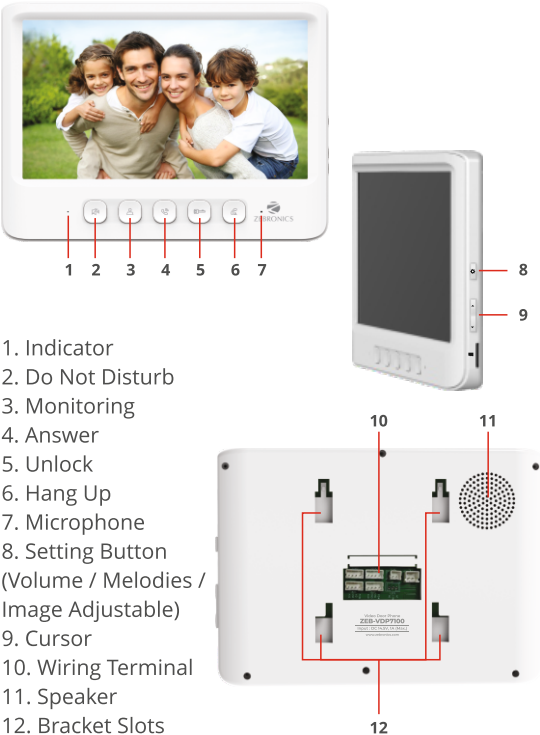


- ◆ When the distance is 10m, use RVV4 x 0.3mm<sup>2</sup>. If the user wants to lengthen the distance to 10m - 30m, use RVV4 x 0.5mm<sup>2</sup> cable. If the user wants to lengthen the distance to 30m - 50m, use RVV4 x 0.75mm<sup>2</sup> cable. Connect the wiring terminals 1, 2, 3, 4 of indoor unit with wiring terminals 1, 2, 3, 4 of outdoor unit separately.
- ◆ The wiring terminals of 5, 6 is used for connecting electronic-lock, the electronic lock-connection can be provided with RVV2 x 1.0mm<sup>2</sup>.
- ◆ In order to power the VDP (both Indoor / Outdoor) connect the Power adaptor to the Power port of the Indoor Unit.
- ◆ When we utilize the DOOR1 Port we connect the RVV4 cable with inside the cable we have inner cables and connect the

appropriate inner cables accordingly Green inner cable is for Audio, Black inner cable is for GND / Ground, Yellow inner cable is for Video & Red inner cable is for VCC/Power Same goes for DOOR 2 Port as well.

- ◆ In order to connect the CVBS cameras we can connect it through the CCTV port.

## Operation Buttons Indoor Unit






## Outdoor Unit



## Operation Instruction

- ◆ Press CALL button of outdoor unit to call. The doorbell will ring and the images of visitors will show on the indoor unit. Press TALK (📞) to activate the intercom.
- ◆ Press HANG UP (📞) to end the talking. Each talking lasts for about 120 seconds.
- ◆ Press UNLOCK (🔑) button to release the electronic-lock.
- ◆ Press DO NOT DISTURB (🔊) button to activate DO NOT DISTURB function, Under this state, no voice will be heard when someone press the doorbell.
- ◆ Press MONITOR (👤) button to turn on and it can last 60 seconds
- ◆ Press HANG UP (📞) button to end the talking.

- ◆ Use (  ) button to select the setting option of talking volume, contrast, chroma and brightness, then click the (   ) UP / DOWN button to adjusting a proper talking volume and image performance.

## Caution

1. To prevent damage, the adapter should be fastened on the wall according to instruction.
2. Keep the power plug in a convenient location for easy disconnection of the device.
3. When connecting AC power wire, please finish the connection before plugging in the power.

## Troubleshooting

PROBLEM	SOLUTIONS
No Video / Audio	<ul style="list-style-type: none"><li>• Make sure all the connections are secured and properly connected.</li><li>• Make sure there is nothing obstructing the view of the camera.</li></ul>
No Video, but Intercommunication is Normal	<ul style="list-style-type: none"><li>• Make sure all the connections are secured and properly connected.</li><li>• Make sure there is nothing obstructing the view of the camera.</li></ul>
No Audio when Calling	<ul style="list-style-type: none"><li>• Make sure the volume knob on the indoor unit is turned up.</li><li>• Make sure that there is nothing such as object with strong magnetism interfering with the speaker or microphone.</li><li>• Make sure all the connections are secured and properly connected.</li></ul>
The Outdoor Unit can not Call the Indoor Unit	<ul style="list-style-type: none"><li>• Make sure all the connections are secured and properly connected.</li></ul>
Door Unlock not Working	<ul style="list-style-type: none"><li>• Make sure the connections with the locks are secured and properly connected.</li><li>• Make sure you have the lock wired to a power source enough to make it operate.</li></ul>
It is not possible to Hear the External Sound but the Call Tone is Heard	<ul style="list-style-type: none"><li>• Press TALK button for 2-way intercom.</li><li>• Make sure all the connections are secured and properly connected</li></ul>
It is possible to See the Image from Outdoor Unit but not possible to Talk	<ul style="list-style-type: none"><li>• Press TALK button for 2-way intercom as only pressing MONITOR button will prevent sound from outdoor unit.</li><li>• Make sure all the connections are secured and properly connected</li></ul>

**ISO 9001:2015 Certified Company**  
**[www.zebronics.com](http://www.zebronics.com)**

