



4G WiFi Router

**ZEB** **WR3004G**



**User Manual**

[www.zebronics.com](http://www.zebronics.com)

Thank you for purchasing the **“ZEB-WR3004G”** 4G Wi-Fi Router. Please read this user manual carefully before usage & save it for future reference.

**Note:**

- *Avoid the use of this product at the high- temperature and high humidity environment.*
- *Avoid the self-disassembly of the product or it results in the failure of warranty.*
- *To know more about Terms and conditions for warranty policy, please visit*  
***<https://zebronics.com/pages/warranty-policy>***

**Features:**

- LAN / WAN Port - With Auto Switching
- Compatible with 4G/5G Sim Card (Nano)
- Built In High-Speed Antenna
- Covers Wider Area
- WiFi and LAN Connectivity
- Faster Connection
- Reduced Network Traffic Bottlenecks
- Compact Size
- Secure Network (WPA2-PSK)
- Low Latency
- Wi-Fi 6

**Specifications:**

Device Interface : RJ45 10/100M x 1, 4G Sim Slot x 1, Charging Port x 1

Antenna Type	: Wi-Fi x 1, LTE x 2
IEEE Standards	: IEEE 802.11ax
Signal Rate	
WiFi	: TX - 286Mbps, RX - 229Mbps
Frequency Support	: 2.4GHz
Security Protocols	: Open, WPA-PSK, WPA2-PSK
Buttons	: Reset Button
Network Type	
LTE	: 850MHz / 900MHz / 1800MHz / 2100MHz / 2400MHz
Security	: Port Mapping, Port Forwarding, Port Filtering, URL Filtering, UPNP, DMZ
Product Dimension (W x D x H)	: 15.1 x 5 x 22.1 cm (Antennas Up)
Net Weight	: 146 g

### **Package Contents:**

Router	: 1 U
Power Adaptor	: 1 U
LAN Cable	: 1 U
QR Code Guide	: 1 U

## Product Description:



1. Reset Switch
2. SIM Slot
3. Antennas
4. Power Input Port
5. WAN / LAN Port

## Product Setup:

- Please ensure that the Nano sim card has a data plan and supports LTE coverage in your area and insert the SIM card into the designated slot, ensuring it is oriented correctly.
- Extend/spread apart the antennas from its folded position.
- Please ensure the power adapter is properly connected to the router and Power ON.

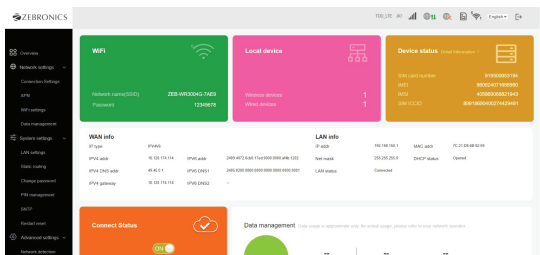


## Web Interface:

- Use a web browser to enter the router's default IP address (192.168.150.1) (present on the router sticker)



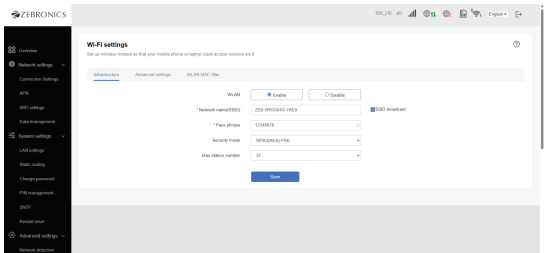
- Log in with the default username - **admin** and password - **admin** (present on the router sticker), the router's homepage will appear.



## WiFi SSID and Password Change:

To customize the WiFi network name (SSID) and password for secure wireless access,

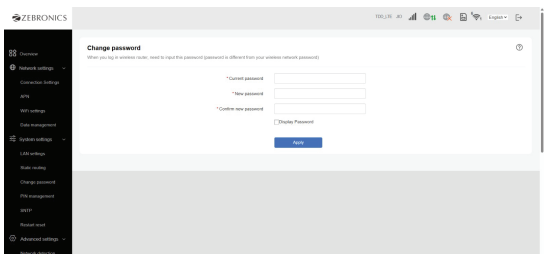
- Go to Network setting -> WiFi Settings -> Infrastructure
- Enable Wlan
- Now Enter your preferred SSID and Password
- Save and Exit.



## Change Router Web Page Password:

To change the router's web page,

- Go to System Setting -> Change Password

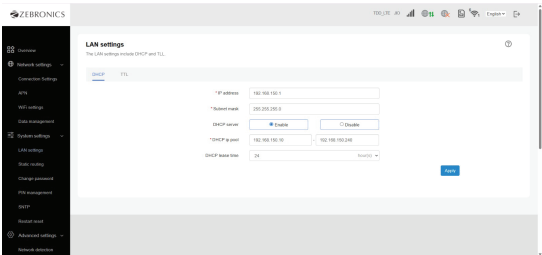


- Enter the current password, New password and Confirm the new password and click on apply.

## LAN Settings:

To change the router's output LAN port ID and the network series,

- Go to System Setting -> LAN Settings
- Enter the Network IP address and the range of IPs for the DHCP clients.
- Click on Apply.

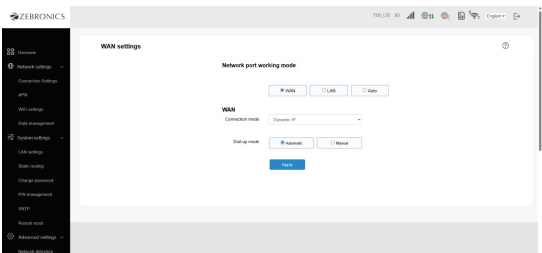


The screenshot shows the ZEBRONICS web interface for LAN settings. The left sidebar contains a menu with options: Overview, Network settings (selected), Connection Settings, ATN, WiFi settings, Data management, System settings, LAN settings (active), Static routing, Change password, PIN management, SNMP, Router test, and Advanced settings. The main content area is titled 'LAN settings' with a subtitle 'The LAN settings include DHCP and TTL'. It has two tabs: 'DHCP' (selected) and 'TTL'. The DHCP settings include: IP address (192.168.150.1), Subnet mask (255.255.255.0), DHCP server (Enable selected, Disable button), DHCP IP pool (192.168.150.10 to 192.168.150.248), and DHCP lease time (24 hours). An 'Apply' button is at the bottom right.

## WAN Settings:

To change the router's Input WAN,

- Go to Advanced Settings -> WAN Settings
- Choose the network port working mode as WAN.
- Select between the Dynamic IP or static IP and enter the required network information like ID, Subnetmask, etc
- Click on Apply.

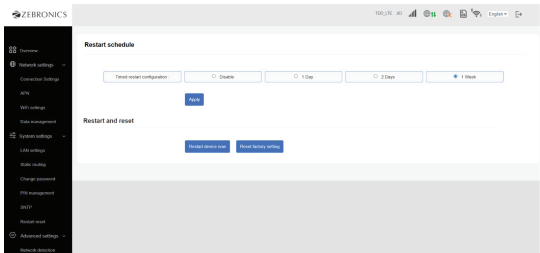


The screenshot shows the ZEBRONICS web interface for WAN settings. The left sidebar is the same as in the LAN settings page. The main content area is titled 'WAN settings'. It has a section 'Network port working mode' with three radio buttons: WAN (selected), LAN, and Auto. Below this is the 'WAN' section with 'Connection mode' set to 'Dynamic IP' and 'Dial-up mode' set to 'Automatic'. An 'Apply' button is at the bottom.

## Restart and Reset Settings:

To restart the Router or to reset the changes to defaults,

- Go to System Settings -> Restart Reset
- Click on Restart Now for restarting the Router
- Or Click on Reset Factory Settings - to reset the router to its factory settings.



ISO 9001:2015 Certified Company  
[www.zebronics.com](http://www.zebronics.com)