



WiFi & BT USB Adapter  
**ZEB USB150WFBT**



**User Manual**

[www.zebronics.com](http://www.zebronics.com)

Dear Customer,

Thank you for purchasing the **ZEB-USB150WFBT** Wireless BT& Wi-Fi Dongle. Please read the user manual carefully before usage & save it for future reference.

**Note:**

- Avoid the usage of this product at the high temperature and high humidity environment.
- Avoid the self-disassembly of the product as it results in the failure of Warranty.
- Please Use the product with the Laptop/PC USB Port.

**Caution:**

- Keep it away from the children.
- Do not use it with the external power adapter.

**Features:**

- BT + WI-FI
- Supports WI-FI 150Mbps & BT 3Mbps
- IEEE 802.11 a/b/g/n client
- Data Transfer & Audio Streaming
- High Speed Connectivity
- LED Indicator

**Specification:**

BT Version	: v4.0
Supported BT Profile	: A2DP / AVRCP / HFP / HSP
Interface	: USB
BT Range	: 10 (without obstacles)
Supported BT Speed	: 3 Mbps
Supported WI-FI Speed	: 150 Mbps
WI-FI Frequency Range	: 2.4GHz
Input Voltage	: DC 5V
Supported OS	: Windows XP & Above, Linux
Product Dimension	: 16 x 32.5 x 8 mm
Product Weight	: 3g

## Package Content:

Wifi + BT Adapter : 1 Unit

Driver CD : 1 Unit

## How to use: (BT Configuration)

- Plug-in ZEB-USB150WFBT to the PC/Laptop
- Insert the given Driver CD to the PC/Laptop
- Kindly follow the steps given below
- After Successful Installation do not restart, restart after

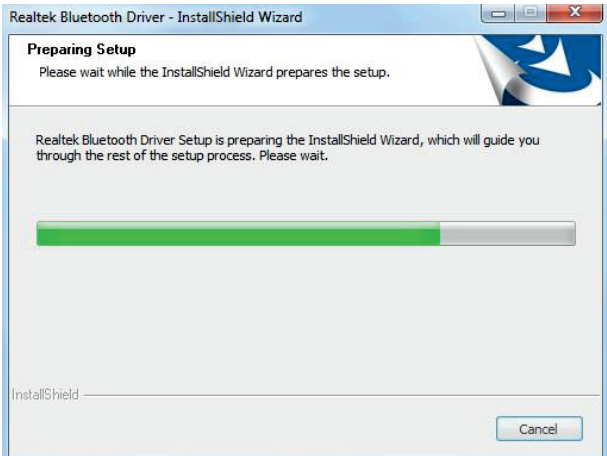
Wi-Fi drivers are also installed

### NOTE:

While installing the driver make sure the ZEB-USB150WFBT is plugged in.

## Windows Installation Procedure:

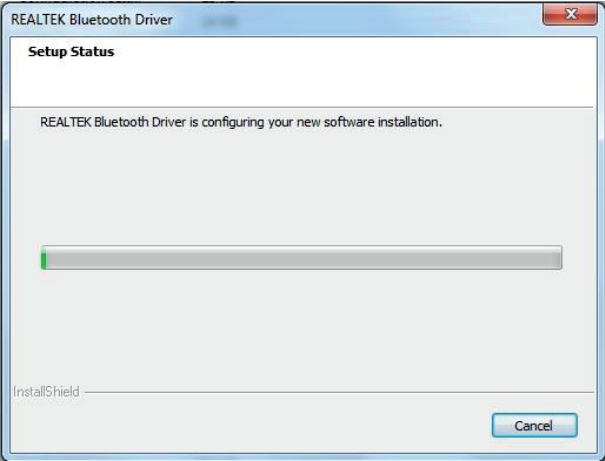
1. After inserting the given driver CD, click on setup.exe and this loading dialog box will appear.



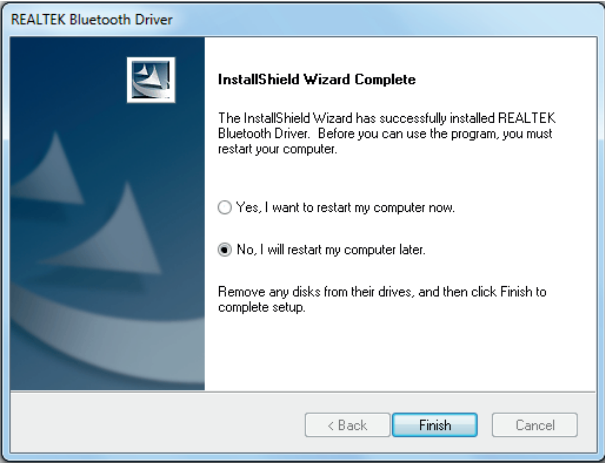
2. Click on NEXT for further installation



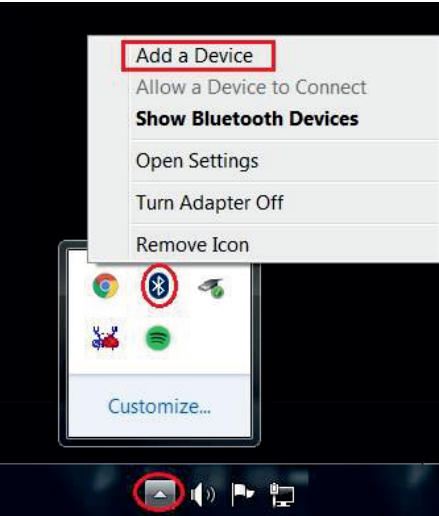
3. After clicking on NEXT this dialog box will appear, saying that drivers are installing.



4. Do not click on Restart, Press restart once the Wi-Fi drivers are also installed.



5. After the driver is installed, BT Setting can be accessed from the Taskbar as marked below.



## Wi-Fi Configuration:

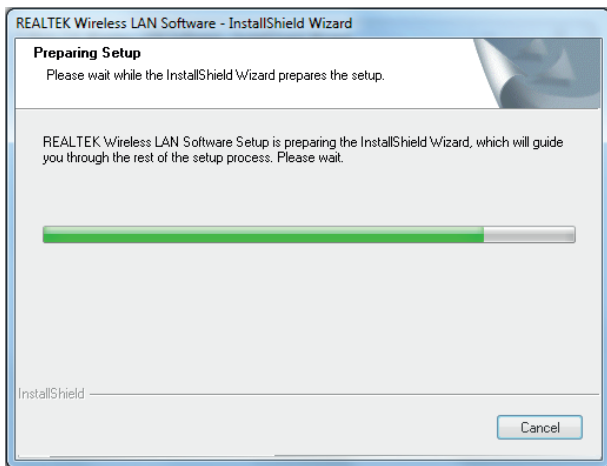
- Plug-in ZEB-USB150WFBT to the PC/Laptop.
- Insert the given Driver CD to the PC/Laptop.
- Kindly follow the steps given below.
- After Successful Installation, Click on restart.

### NOTE:

While installing the driver make sure the ZEB-USB150WFBT is plugged in.

## Windows Installation Procedure:

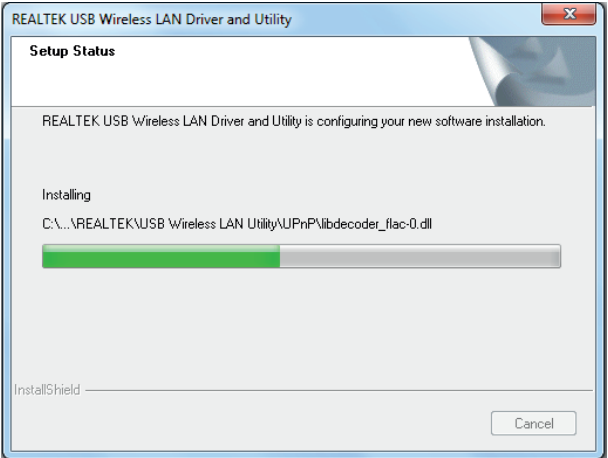
1. After inserting the given driver CD, click on setup.exe and this loading dialog box will appear.



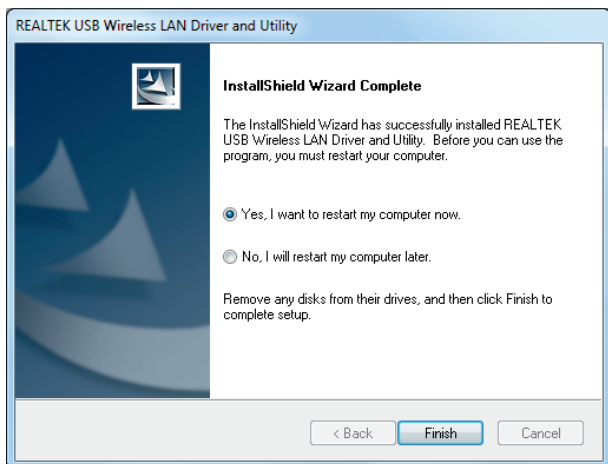
2. Click on NEXT for further installation.



3. After clicking on NEXT this dialog box will appear, saying that drivers are installing.



4. Finally Click Restart Now and finish the setup.

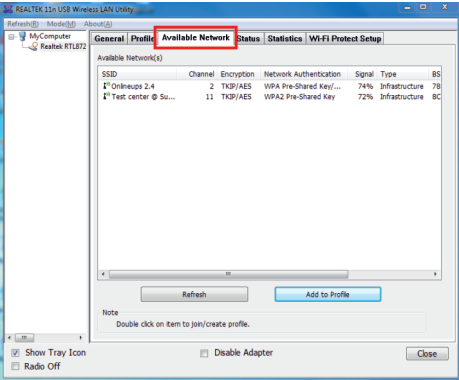


5. After the drivers are installed, Wi-Fi Setting can be accessed from the Taskbar as marked below.





6. After the icon is pressed, Utility dialog box will appear. From that - select Available Network & Scan for the nearby Wi-Fi. Tap on your network & press “Add to Profile”



7. After selecting the network, enter the credentials and click “Ok

