



Zero Client  
**ZC2000**



# User Manual

[www.zebronics.com](http://www.zebronics.com)

Thank you for purchasing **ZEB-ZC2000** Zero Client. Please read this user manual carefully before usage & save it for future reference.

### **Features :**

Monitor Mountable  
Easy Maintenance  
Enhanced Security  
Management Software  
Quad Core Processor

### **Specifications :**

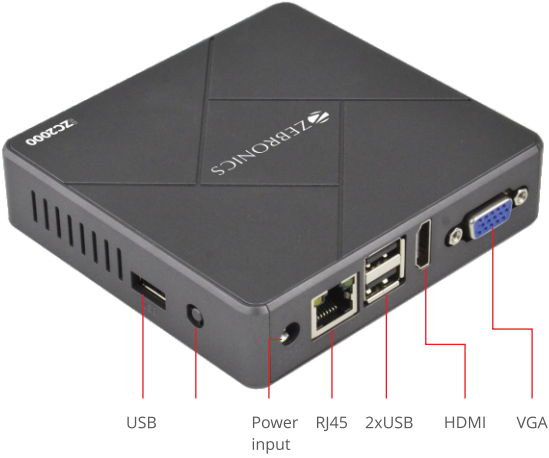
Processor	: Quad Core 1.5GHz
RAM	: 1 GB
Storage	: 8 GB
Resolution	: 1920x1080@60Hz
I/O Ports	: 1x DC IN Port, 1x VGA, 1x HDMI, 4x USB, 1x USB 3.0, 1x Rj45, 1x Speaker Port, 1x Microphone Port
Network	: 10/100/1000M Ethernet (Rj45)
Protocols	: RDP8.0/8.1/10.0-10.6
Supported Server	: Windows 7/8.1/10/11 Server 2008 R2/2012 R2/2016 R2
Anti Theft Feature	: Kensington lock
Product dimensions	: 11x10.5x3 cm (WxDxH)
Net. weight	: 145g
Country of Origin	: India

## Package contents :

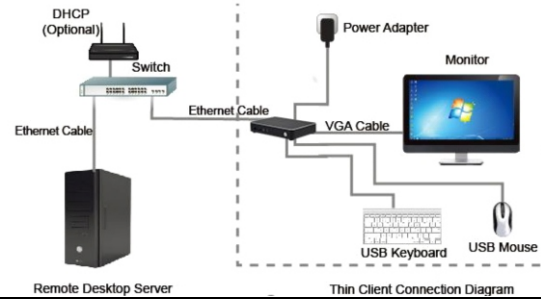
Zero Client	: 1 U
Power Adapter	: 1 U
QR code guide	: 1 U
Monitor Mount	: 1 U
Mounting Screws	: 1 U

## Product image :





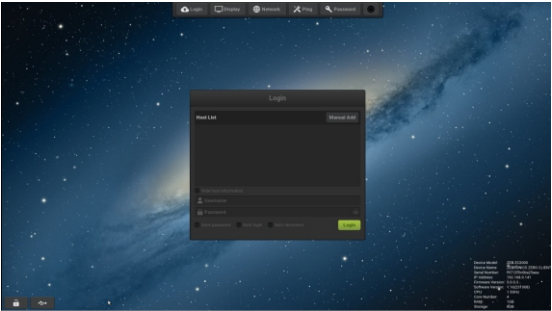
**Basic Networking:-**



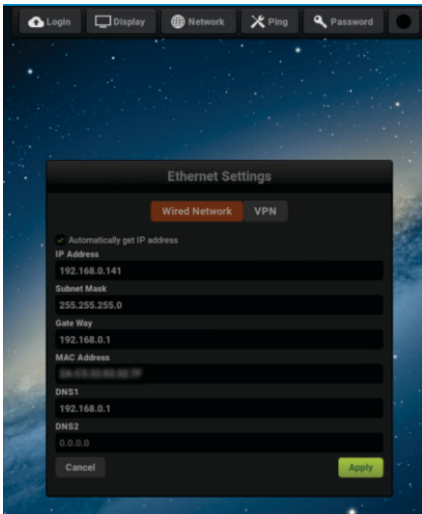
Kindly network the Zero client as per the above mentioned diagram

## Setting up the Zero Client:-

**Note:-** You need to configure the remote desktop setup on the operating system of your computer. Please refer to the official documentation of the operating system and configure the Remote desktop protocol.



## Configure your Ethernet Settings:



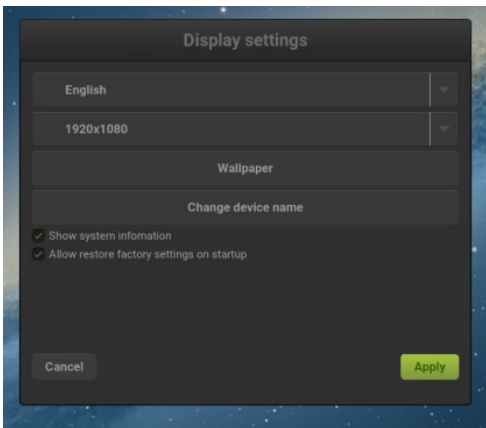
By default, the zero client is configured in DHCP mode. If you want to assign the static IP address, Please uncheck the **automatically get the IP address** option and follow the below steps.

**Step1:-** Select **Network** option on the Zero client UI interface and select wired network option.

**Step2:-** Now Enter the Network details such as IP address, Subnet Mask and the default gateway of the router / switch used.

***Note:-** Please assign the IP address which are freely available in the router. Assigning the same IP address will result in IP conflict.*

## Configure your Display Settings:



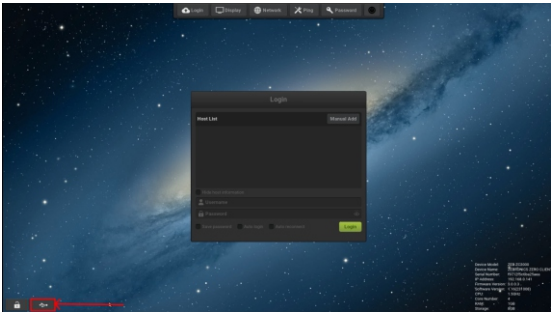
**Step1:-** Select **Display** option on the Zero client UI interface and resolution option Eg:- 1366 x 768

**Step2:-** Select a Suitable resolution which matches the Native resolution of the monitor

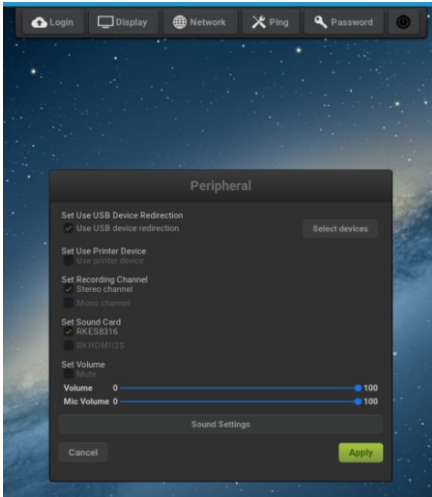
*Note:- The zero client supports up to 1920 x1080p video output.*

## **Configuring your peripheral setup:-**

**Step 1:-** On the Left bottom of the screen Select the USB symbol icon to open up the peripheral menu.

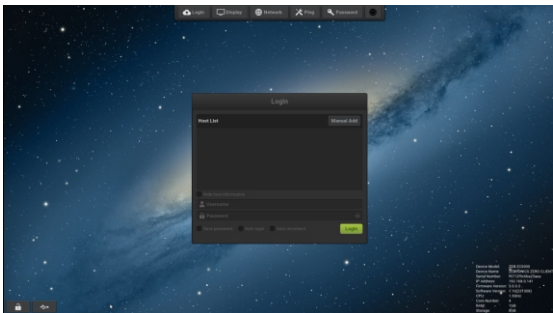


**Step 2:-** Now, adjust the settings according to your preference



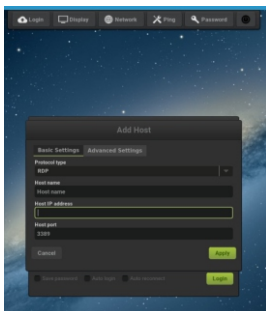
## Connecting the servers:-

**Step 1:-** Click on manual add option.



**Step 2:-** Enter the IP details, Hostname and Port of the server.

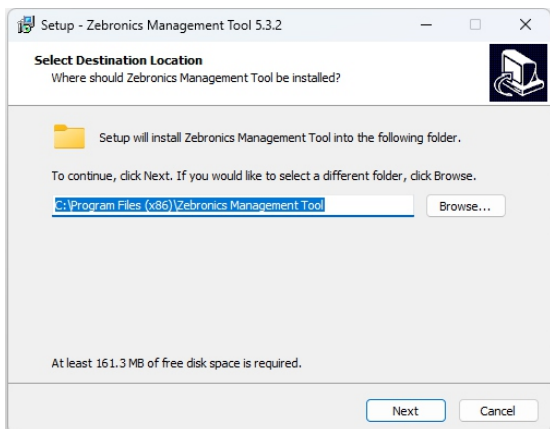




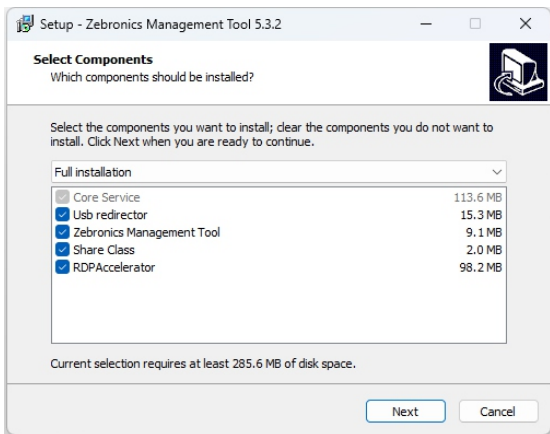
**Step3:-** Click on ok.

## Zebronics Management Tool Installation Setup :-

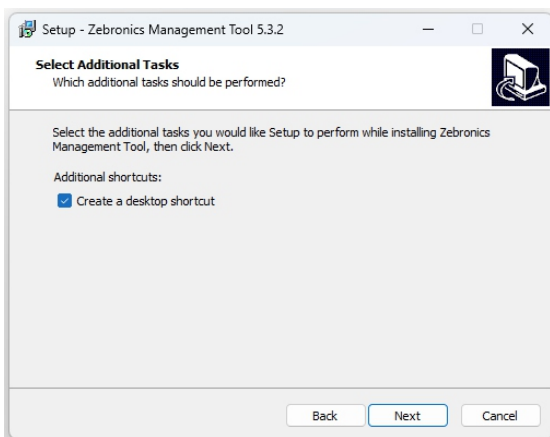
- Double click to open the installer



- Select the destination to be installed.

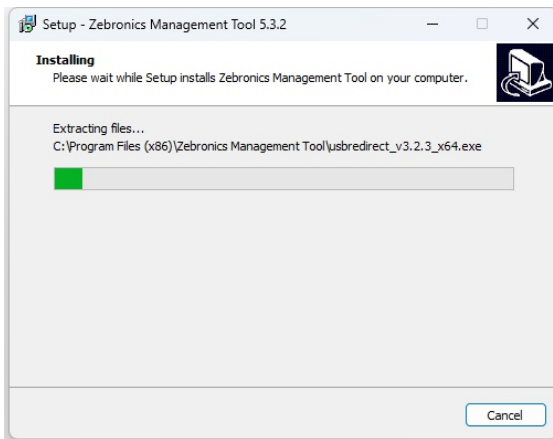


- Select the necessary components to be installed.



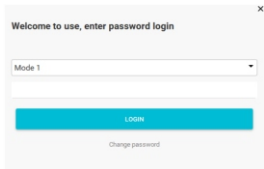
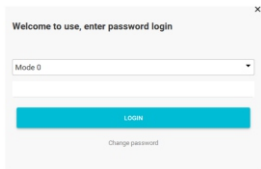
- Check the box if a Desktop shortcut is needed.

- Click install to initiate the installation.

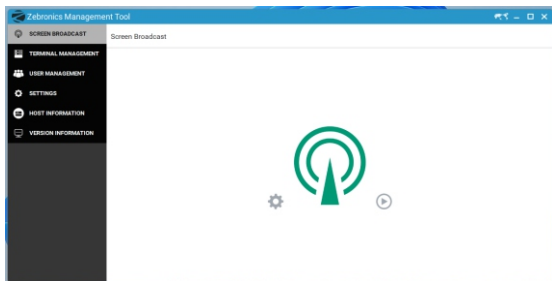


## Operation :-

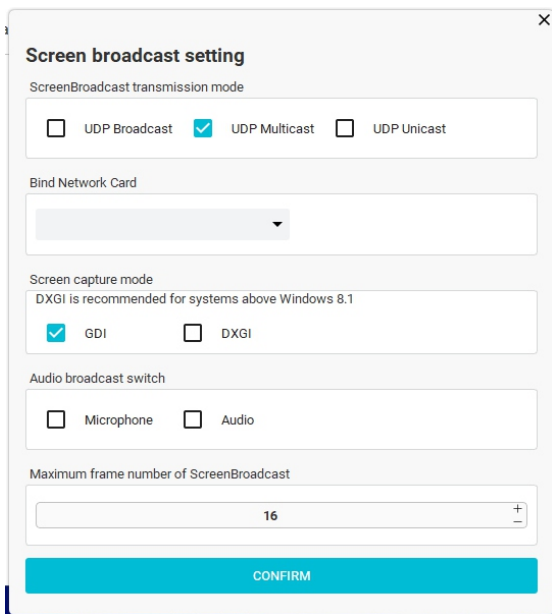
- Double click the Zebronic Management tool Icon to Open the Software
- There is no password by default.



## The Main Interface

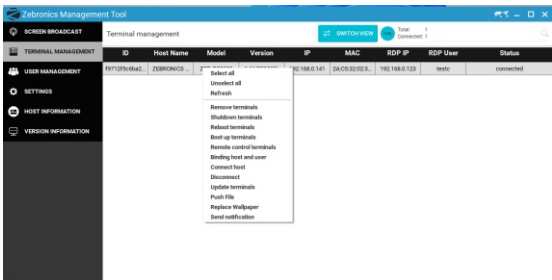


## Screen Broadcast Settings



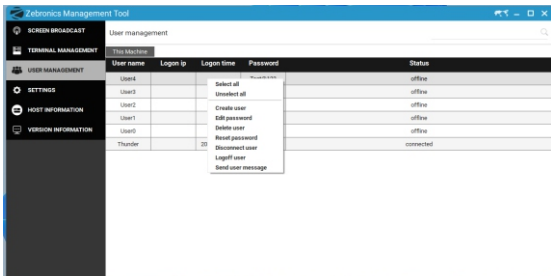
<b>Screen Broadcast Transmission Mode</b>	UDP broadcast, UDP multicast, UDP unicast and other modes can be selected
<b>Screen Display Mode</b>	You can choose the GDI and DXGI modes. If an exception is displayed, change the mode
<b>Audio Broadcast Switch</b>	Select whether or not to broadcast audio, the source of the audio that has been broadcast
<b>Screen Maximum Frame Rate</b>	Sets the maximum frame rate for broadcast

## Terminal Management



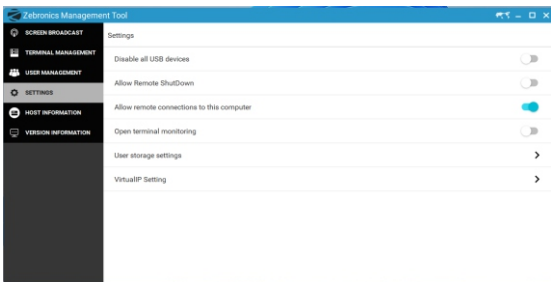
<b>Remove the terminal</b>	Delete the existing terminal. After deleting, the terminal will rescan to connect again
<b>Close the terminal</b>	Shut off terminal power
<b>Restart the terminal</b>	Restart the terminal
<b>Remote control terminal</b>	Wake up the terminal, use the management computer to turn on the closed terminal, Also called wake up.
<b>Bind the Host &amp; User</b>	Specify the connection information to the terminal (host and login account & password)
<b>Connection between a Host</b>	This is equivalent to clicking the "connect" button on the terminal
<b>Disconnect</b>	Disconnect the terminal from the host
<b>Update</b>	Patch terminal firmware updates
<b>File Push</b>	Push the PDF file for the terminal to display

# User management



<b>Create User</b>	Create a user for terminal login use
<b>Edit User</b>	Edit user, change password
<b>Delete User</b>	Delete corresponding user
<b>Reset User</b>	Reset user password
<b>Disconnect User</b>	Disconnect this user's terminal
<b>Logoff User</b>	Log out the corresponding user, log out, will save the corresponding user documents & Data
<b>Send User Message</b>	Send a message to the corresponding user

# System Settings



## Disable all USB devices

When Turned ON, all the USB devices on the terminal will be disabled. Use with caution.

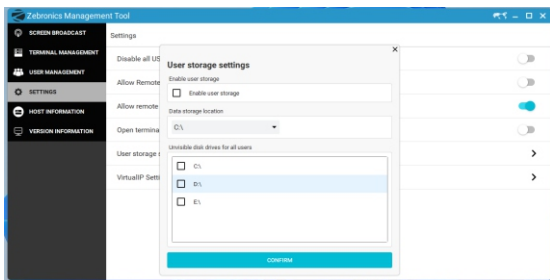
## Allows a remote connection to this computer

To connect the terminal to the host, you need to turn this option ON.

## Open terminal monitoring

When enabled, the terminal management interface (which may need to switch views) can dynamically display the terminal screen.

## User storage Settings

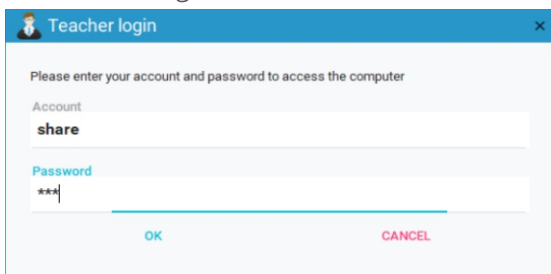


After selecting the corresponding disk as the user's storage space, in order to prevent other users from seeing it, please set the disk to be invisible to all users at the same time. Then restart the host to take effect.

## Share Class

The multimedia teaching system is used with a terminal for related teaching operations, including the following functions:

Screen broadcast, student demonstration, student desktop lock, remote control, remote open software, user management, terminal management, desktop management and other functions can greatly facilitate the use of school teaching.



Teacher login

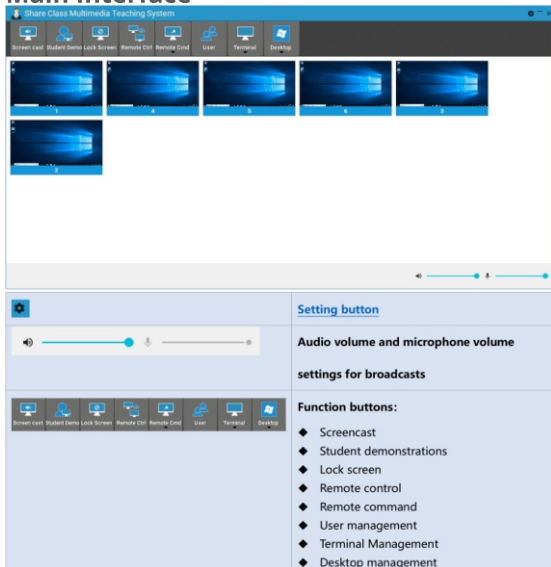
Please enter your account and password to access the computer

Account  
**share**

Password  
\*\*\*|

OK CANCEL

## Main Interface



Share Class Multimedia Teaching System

Screen cast Student Demo Lock Screen Remote Ctrl Remote Cmd User Terminal Desktop

Setting button

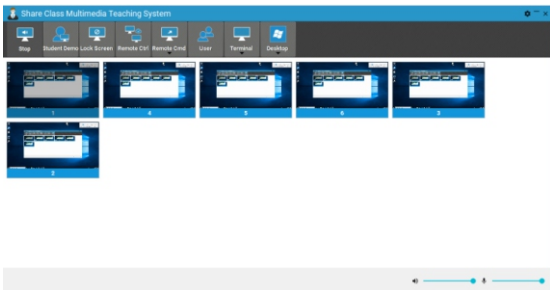
Audio volume and microphone volume settings for broadcasts

Function buttons:

- ◆ Screencast
- ◆ Student demonstrations
- ◆ Lock screen
- ◆ Remote control
- ◆ Remote command
- ◆ User management
- ◆ Terminal Management
- ◆ Desktop management



# Broadcasts

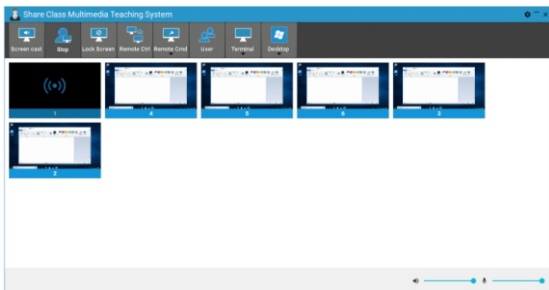


Broadcast function means broadcasting the teacher machine screen to all terminals. Supports broadcast audio  
Click the "Screen Broadcast" button to start broadcasting, and click the "Stop Broadcast" button to stop broadcasting

Please be patient as this operation takes a few seconds to complete.

When the broadcast is turned on, the terminal screen is the same as the teacher's screen, the parameters of the broadcast are configured in the settings interface.

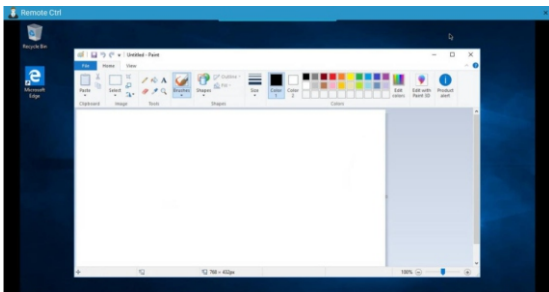
## Broadcasts



A student presentation feature is one that broadcasts a particular student's desktop for all terminals to view. Click the "Student Demo" button to start the demo and the "Stop Demo" button to stop it.

*Note: Before clicking on the "Student Demo" button, the student terminal for the demo needs to be selected.*

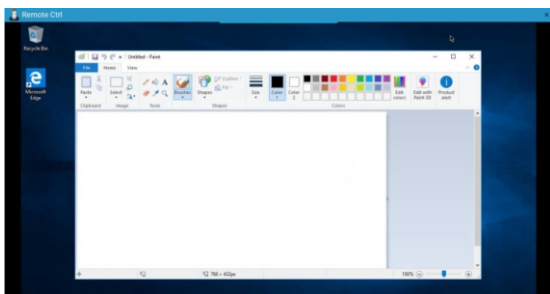
## Remote Control



Click the "Remote Control" button, the

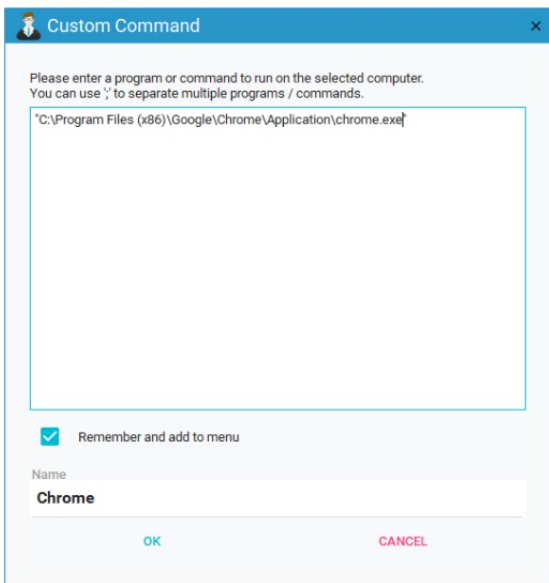
remote control window will pop up, the default support for the operation terminal interface if you just want to view, please check the only view option in the settings interface. Clicking the Close button on the remote control window to exit the remote control interface.

## Open Software in the terminal



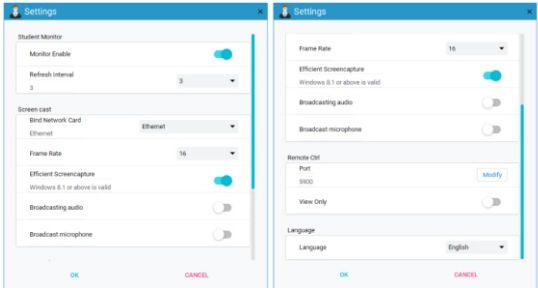
Please select the terminal to be operated before clicking. Support for quick opening of Notepad, screen, writing pad, command prompt, browser, explorer, default player settings, etc..

Custom commands can also be run.



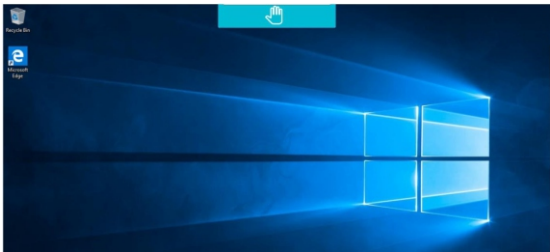
Running a custom command requires double quotation marks over the full path of the executed command, or the software will not open and supports adding this command to a drop-down menu.

# Settings Interface

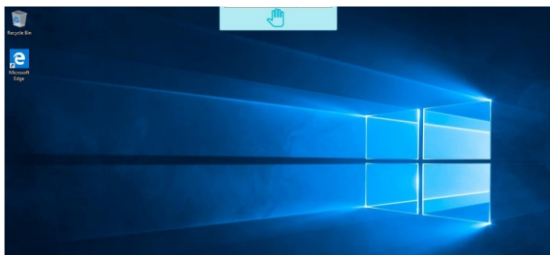


<b>Monitor Enable</b>	Select whether to display the terminal screen dynamically.
<b>Refresh Interval</b>	Dynamic display of the terminal screen refresh interval in case of terminal interface.
<b>Bind Network Card</b>	Network cards used for broadcasting.
<b>Frame Rate</b>	Broadcast frame rate settings.
<b>Efficient screenshot</b>	Efficient screenshot, Win10, Windows server 2016, 2019 systems recommend enabling this option.
<b>Broadcast audio</b>	Select whether to broadcast the host audio (the sound output from the host audio interface).
<b>Broadcast microphone</b>	Select whether or not to broadcast host microphone sound.
<b>Port</b>	Port number for remote control, typically 5900.
<b>View Only</b>	Whether the remote control is limited to a view-only state that is not enabled to operate the terminal desktop.
<b>Language</b>	Select the language in which the software will be displayed, supporting Chinese and English.

# Raise Hand



When you click on the “Raise hand” Icon, it appears darker.



After clicking on it, the icons turn lighter. To cancel the “Raise hand” action, Click the icon again.

