



MECHANICAL KEYBOARD

NITRO *Pro*



User Manual

www.zebronics.com

Thank you for purchasing **NITRO PRO (ZEB-K6000MW)** Wired Mechanical Keyboard. Please read this user manual carefully before usage & save it for future reference.

Note:

- Avoid self-disassembly of keyboard, kindly approach our service team with reference to the following link for service support:

<https://zebronics.com/pages/service-centres>

- Use the Type C cable provided inside the package for charging.

Features:

Comfortable silent tactile feeling

5 Levels of Brightness + 1 LED off mode

Detachable Braided Type-C cable

5 LED Speed Modes

Integrated Multimedia keys

All Keys Lock Function

Windows key Disable / Enable function

Heavy Duty

Gold Plated USB

Bottom Rubber Grip

2-Step Retractable stand

OUTEMU Red Switch

Advanced Windows Software

19 LED Modes + 1 LED OFF Mode

98 keys

Specification

Interface	: Type C
Keyboard Type	: Mechanical
Total No. of Keys	: 98 nos
Total No. of Hotkeys	: 11 nos (Integrated)
Keystroke	
Key pressure	: 60gf
Key Travel	: 4.0±0.5mm
Key life span	: 50,000,000 times
Key cap drawing force:	1.0 kgf
Polling Rate	: 1000Hz
Cable length	: 1.8m
Power Consumption	: DC 5V, ≤300mA (Max.)
Product Dimension (W x D x H)	: 38.1 x 13.3 x 4 cm
Net. Weight	: 860g

Instructions to use:

Wired mode connection with Type-C:

- Connect the USB A to Type-C cable from the PC/Laptop to the keyboard.
- Once connected, the keyboard will automatically start working in wired mode.

Other key functions:

- FN + Win : To lock/Unlock Windows key.
- FN + Home : Turn ON or OFF Backlight.
- FN + Esc (Hold 3s) : To reset the entire keyboard to default mode.

LED Functions:

- FN + Ins : To cycle LED lighting modes. (19 LED modes + 1 LED OFF mode).
- FN + ← / → : To modify the speed of light by 5 levels.
- FN + ↑ / ↓ : To adjust the brightness of the keys by 6 levels.

Note: The four LED indicators flash simultaneously thrice to indicate when the max and min limit values are reached.

FN key combination function:

- FN + F1 : Player
- FN + F2 : Volume-
- FN + F3 : Volume +
- FN + F4 : Mute
- FN + F5 : Stop
- FN + F6 : Previous Track
- FN + F7 : Next Track
- FN + F8 : Play / Pause
- FN + F9 : Open Browser
- FN + F10 : Calculator
- FN + F11 : Desktop
- FN + F12 : Lock all Keys
- FN + [{ : PrtSc
- FN +]} : ScrLk
- FN + \ | : Pause

Software features:

First, plug in the USB connector cable of the Keyboard, to the PC computer or Laptop's USB port, for connection.

NITRO PRO (ZEB-K6000MW) Software

Installation:

- Kindly download and install the NITRO PRO (ZEB-K6000MW) software from the following web link, in order to use the keyboard with all the settings and features

<https://zebronics.com/pages/drivers>

- Now open the software and you can notice the software interface as shown:

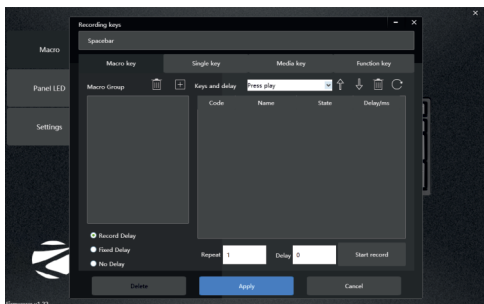
Macro



- Select the **“Macro”** menu on the left side of home screen.
- Press the desired key on the given Keyboard layout to assign macro function to it when pressed.

- When the key is pressed a new dialogue box appears with Macro key / Single key / Media key / Function key.

Macro Key Tab

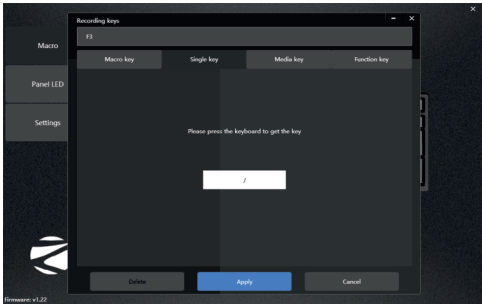


- Select the **Macro Key** Tab.
- Click the add button to create a new macro group.
- Then click on start record button to initiate record over keystrokes.
- After clicking the required keystrokes, Click on stop record button to stop the recording.
- Then click on apply to save that particular pattern of keystrokes to the desired group name.
- Before recording, users can experiment with the **Delay** functions and **Repeat** function.

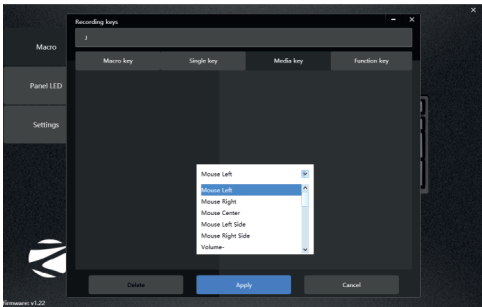
Single key Tab

- Click on the **Single key** tab.
- As the name suggests you can replicate a key function by assigning the required particular key

to any desired key.



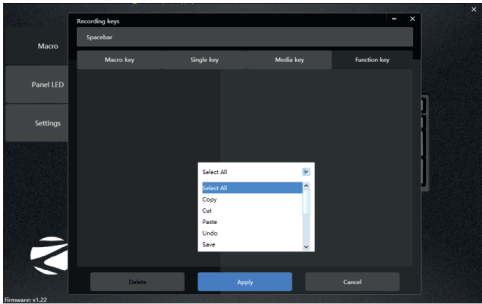
Media key Tab



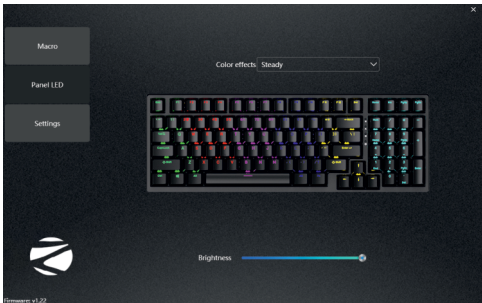
- Select **Media Key** tab, To Assign media functions like play, pause, calculator, volume etc.

Function key Tab

- Select **Function Key** tab.
- This allows users to replicate common functions like Ctrl+C, Ctrl+V, Ctrl+Z, etc. and helps to assign those functions to a particular key.



Panel LED

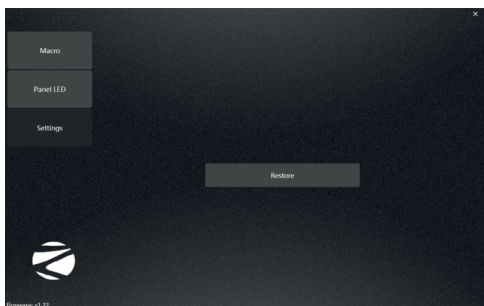


- Click on **“Panel LED”** to modify LED modes and other LED based settings.
- Choose the desired colour effect from the available 19 LED modes seen on the drop down box.
- Adjust the brightness and speed of the LED given below the drop down box.

***Note :** The speed interface appears for whenever applicable.*

Settings

- Select the **“Settings”**, To undo any mishaps use the restore function present.



ISO 9001:2015 Certified Company
www.zebronics.com