



Gamer's Dream



ZEB

Premium Gaming Chair

GC3000

User Manual



www.zebronics.com

Dear Consumer,

Thank you for purchasing **ZEB-CC3000** premium gaming chair. Please read this user manual carefully before operation & save it for future reference.

Specifications

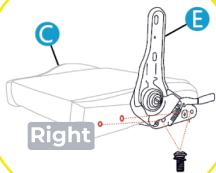
Chair Cover Material	: PVC Leather
Frame Type	: Metal Frame
Foam Density	: 20D
Leg Material	: Metal Base
Swivels angles	: 360°
Adjustable Tilt Angle	: 90°-180°
Armrest type	: 4D
Caster Wheels size	: 60mm
Gas Lift Class	: Class 4
Product Dimension	: 69 x 53 x 131 cm (W x D x H)
Net Weight	: 19kg

Note:

use Allen key tool (inside package) for removing or tightening the screws.

Installation Guide:



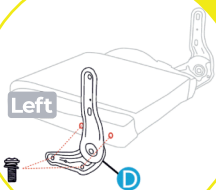
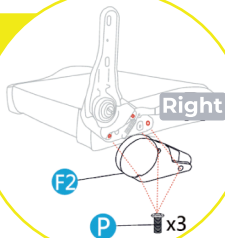


Step 1

Remove the pre-installed 2 no of screws. Align seat C and adjuster E with seat holes, and tighten the screws as shown in image.

Step 2

Align the cover F2 with seat and tighten 3 no of screws as shown in image.

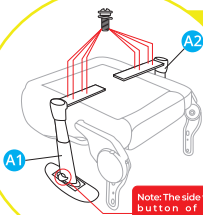
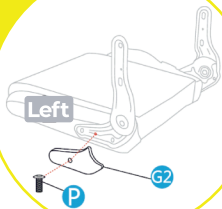


Step 3

Remove the pre-installed 2 no of screws. Align connector D & seat C with seat holes, tighten 2 no of screws as shown in the image.

Step 4

Remove the pre-installed 1 no of screw. Align the cover G2 with seat and tighten 1 no of screw as shown in image.



Note: The side with button of the armrest should be placed outwards

Step 5

Remove the pre-installed 12 no of screws underneath the seat. Install the armrest A1 & A2, align each armrest with the outermost 4 screw holes, and tighten 4 no of screws on each side as shown in the image.

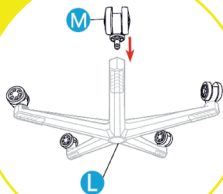
Step 6

Install mechanism K at the middle part of the seat's bottom. Align the screws of mechanism K accordingly and screw it tightly with the allen key tool.



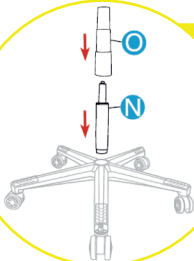
Step 7

Invert the base L and attach the casters M*5



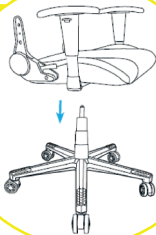
Step 8

Insert the Class 4 Gas lift N and the Gas lift cover O to the base L as shown in the image.



Step 9

Insert the bottom of the seat onto the gas lift as shown in the image.





Step 10

Remove the pre-installed 2 no of screws on the right side of the backrest B. Insert the backrest B with the seat C. Fix the 2 screws back to its place and tighten with allen key.

Step 11

Align the cover F1 with backrest, and then tighten the 1no of screw as shown in the image.



Step 12

Remove the pre-installed 2 no of screws on the left side of the backrest B and Insert the backrest B with the seat C as shown in the image. Fix the 2 screws back to its place and tighten with allen key.



Step 13

Align the cover G1 with backrest, and then tighten the 1 no of screw as shown in the image.



Step 14

Attach the head pillow I & lumbar support J as shown in the image.

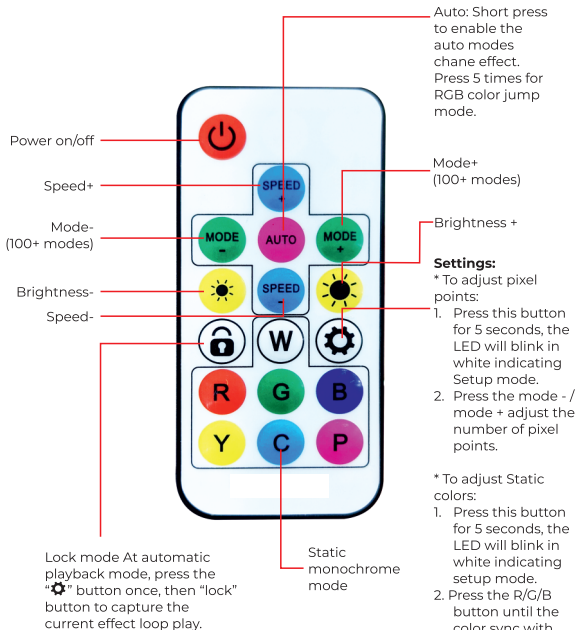


1. The 4D adjustable armrest can be adjusted to provide height adjustment, move it front and back, pull the armrest inwards or push it outwards and angular rotation.
2. Lift the handle to recline and release it to any desired position. Rest on the backrest when resetting back to its normal position, otherwise it may rebound rapidly.
3. • Pull upward on the lever to adjust the seat height.
• Push the lever inward to lock, pull out to unlock the chair.
4. Tilt tension knob underneath the seat can adjust the rocking angle. Turn it clockwise to decrease the angle, counter clock wise to increase the angle.



LED light connection

- Connect the Male and Female 3.5mm cables to each other.
- Provide 5V DC USB power input for the LED lights.
- Options such as brightness control, mode change, RGB color options and speed adjustments can be accessed with the remote.





ISO 9001:2015 Certified Company

www.zebronics.com