



Gamer's Dream



Wired Gamepad
ZEB **MAX**
FURY

User Manual

www.zebronics.com

Thank you for purchasing **ZEB-MAX FURY** wired gaming pad. Please read the user manual before usage and save this user manual for future reference.

Note

- *ZEB-MAX FURY is a plug and play device.*
- *Please unplug your Gamepad from your PC when it is not in use.*
- *Avoid Self Disassembly of the product or it results in voiding the Gamepad's Warranty.*
- *Please use our connector cable for connecting your gamepad to your PC.*

To know more about Terms and conditions for warranty policy, please visit

<https://zebronics.com/pages/warranty-policy>

Features

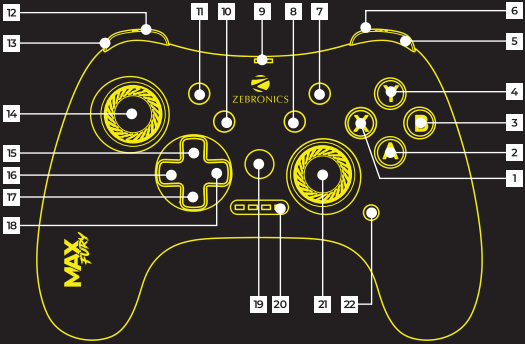
- Wired (Type-C Input)
- Ergonomic and Comfortable Design
- Dual Vibration Motors
- RGB LED control
- Dual Analog Sticks
- LED Indicator
- Quad Front Triggers

- Special Keys (Turbo / Clear / Start / Select & Mode)
- Plug & Play
- Transparent Black

Specifications

Interface	: Detachable Type C - USB Wired
Compatible OS	: Windows / Android
No. of Buttons	: 17
No. of Analog sticks	: 2
No. of vibration motors	: 2
Product Dimension (W x D x H)	: 15.2 x 11.5 x 5.8 cm
Net Weight	: 195 g

Device Representation & Controls:



1-4 Controls - A / B / X / Y Respectively

5 Trigger R1

6 Trigger R2

7 Start

8 Clear Button

9 Type-C and Data Port

10 Turbo Button

11 Select

12 Trigger L2

13 Trigger L1

14 Left Joystick

15-18 Direction Pad - Up / Right / Down / Left

19 Mode Button

20 LED Indicator

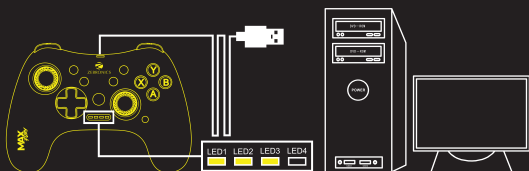
21 Right Joystick

22 RGB Control

X-Input Mode

Connect the gamepad to your computer and wait until the computer recognizes the controller. Now, Switch to X input mode by pressing the MODE button until LED1, LED2 and LED3 are turned on.

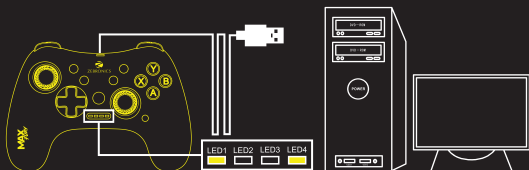
Compatible for Windows 7 / 8 / 10



D-Input Mode

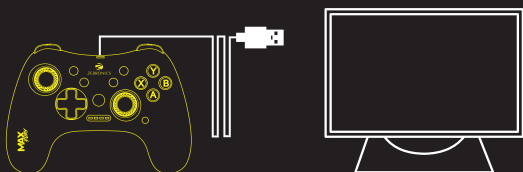
Connect the gamepad to your computer and wait until the computer recognizes the controller. Now, Switch to D input mode by pressing the MODE button until LED1 and LED 4 are turned on.

Compatible for Windows 7 / 8 / 10



Android Input Mode

Connect gamepad to USB port of Android Media Box, Android TV, after the system recognize the game controller, then you can use the controller to play the games.



Turbo Function

Press and hold the TURBO button and the other button (A/B/X/Y) of preference, for 5 seconds. This helps to use the key for continuous input while gaming. To disable the function, you can press and hold the CLEAR button and the other button (A/B/X/Y) selected previously, for 5 seconds.

1.For setting Turbo Function in Maximum speed:-

Press & Hold the TURBO button and UP arrow button simultaneously.

2.For setting Turbo Function in Medium speed:-

Press & Hold the TURBO button and RIGHT arrow button simultaneously.

3.For setting Turbo Function in Minimum speed:-

Press & Hold the TURBO button + DOWN arrow button simultaneously.

LED Control :

Press the dedicated LED button to switch the Built-in LED modes.

(Dynamic LED, Static LED & LED OFF)

