



Gamer's Dream

Wireless Gamepad  
**MAX LINK**  
ZEB



**User Manual**

[www.zebronics.com](http://www.zebronics.com)

Thank you for purchasing **ZEB-MAX LINK** wireless gaming pad. Please read the user manual before usage and save this user manual for future reference.

### **Note**

- *ZEB-MAX LINK is a plug and play device. You can use this device without drivers.*
- *Please unplug your Gamepad from your PC when it is not in use.*
- *Avoid Self Disassembly of the product or it results in voiding the Gamepad's Warranty.*
- *Please use our connector cable for charging your game pad.*

*To know more about Terms and conditions for warranty policy, please visit*

*<https://zebronics.com/pages/warranty-policy>*

### **Features**

- 2.4GHz USB Receiver
- Support for Windows X-Input & D-Input / Android media box\*\*
- Ergonomic design
- Dual vibration motors
- RGB Light
- Dual analog sticks

- LED indicator
- Quad front triggers
- Turbo function with Speed adjustment
- Plug & Play

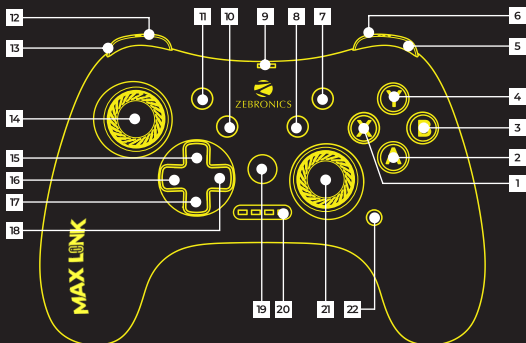
## Specifications

Interface	: 2.4GHz Wireless USB Receiver
Compatible OS	: Windows, Android**
No. of Buttons	: 17
No. of Analog Sticks	: 2
No. of Vibration Motors	: 2
Charging Time	: 2.5H approx.
Usage Time	: Up to 14h*
Product Dimension (W x D x H)	: 15.2 x 11.5 x 5.8 cm
Net Weight	: 220 g

*\*without RGB lights, depending upon usage conditions*

*\*\*Depending upon Game and Device compatibility*

## Device Representation & Controls:

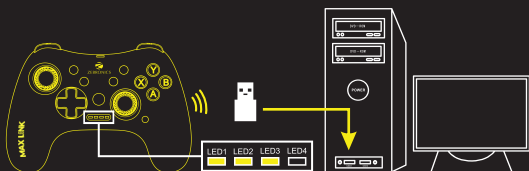


- 1-4** Controls - A / B / X / Y Respectively
- 5** Trigger R1
- 6** Trigger R2
- 7** Start
- 8** Clear Button
- 9** Type-C Port for Charging
- 10** Turbo Button
- 11** Select
- 12** Trigger L2
- 13** Trigger L1
- 14** Left Joystick
- 15-18** Direction Pad - Up / Right / Down / Left
- 19** Mode Button
- 20** LED Indicator
- 21** Right Joystick
- 22** RGB Control

## X-Input Mode

Connect the gamepad to your computer and wait until the computer recognizes the controller. Now, Switch to X input mode by pressing the MODE + A button until LED1, LED2 and LED3 are turned on.

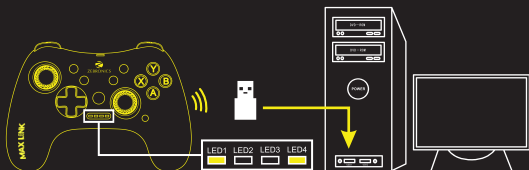
Compatible for Windows 7 / 8 / 10



## D-Input Mode

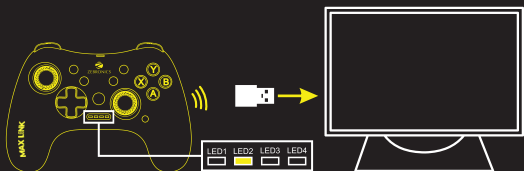
Connect the gamepad to your computer and wait until the computer recognizes the controller. Now, Switch to D input mode by pressing the MODE + Y button until LED1 and LED4 are turned on.

Compatible for Windows 7 / 8 / 10



## Android Input Mode

Connect gamepad to USB port of Android Media Box, Android TV, Android Mobile after the system recognize the game controller, Now, Switch to X input mode by pressing the MODE + B button until LED2 is turned on.



## Turbo Function

Press and hold the TURBO button and the other button (A/B/X/Y) of preference, for 5 seconds. This helps to use the key for continuous input while gaming. To disable the function, you can press and hold the CLEAR button and the other button (A/B/X/Y) selected previously, for 5 seconds.

### 1. For setting Turbo Function in Maximum speed :

Press & Hold the TURBO button and UP arrow button simultaneously.

## 2.For setting Turbo Function in Medium speed:

Press & Hold the TURBO button and RIGHT arrow button simultaneously.

### **3.For setting Turbo Function in Minimum speed:**

Press & Hold the TURBO button + DOWN arrow button simultaneously.

### **LED Control:**

Press the dedicated LED button to switch the Built-in LED modes.  
(Dynamic LED, Static LED & LED OFF)



ISO 9001:2015 Certified Company  
[www.zebronics.com](http://www.zebronics.com)