



Gamer's Dream

Wireless Gamepad
MAX LINK+
ZEB



User Manual

www.zebronic.com

Thank you for purchasing **ZEB-MAX LINK +** wireless gaming pad. Please read the user manual before usage and save this user manual for future reference.

Note

- *ZEB-MAX LINK + is a plug and play device. You can use this device without drivers.*
- *Please unplug your Gamepad from your PC when it is not in use.*
- *Avoid Self Disassembly of the product or it results in voiding the Gamepad's Warranty.*
- *Please use our connector cable for charging your game pad.*

To know more about Terms and conditions for warranty policy, please visit

<https://zebronics.com/pages/warranty-policy>

Features

- 2.4GHz USB Receiver
- Support for PS4, PS3, XBOX 360, Windows X-Input & D-Input / Android Media Box**
- Ergonomic Design
- Dual Vibration Motors
- RGB Light

- Dual Analog Sticks
- LED Indicator
- Quad Front Triggers
- Turbo Function with Speed Adjustment
- Plug & Play

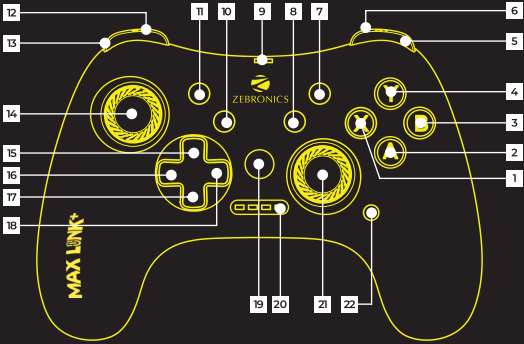
Specifications

Interface	: 2.4GHz Wireless USB Receiver
Compatible OS	: Windows, PS4, PS3, XBOX 360, Android**
No. of Buttons	: 17
No. of Analog Sticks	: 2
No. of Vibration Motors	: 2
Charging Time	: 2.5H approx.
Usage Time	: Up to 14h*
Product Dimension (W x D x H)	: 15.2 x 11.5 x 5.8 cm
Net Weight	: 220 g

**without RGB lights, depending upon usage conditions*

***Depending upon Game and Device compatibility*

Device Representation & Controls:



1-4 Controls - A / B / X / Y Respectively

5 Trigger R1

6 Trigger R2

7 Start

8 Clear Button

9 Type-C Port for Charging

10 Turbo Button

11 Select

12 Trigger L2

13 Trigger L1

14 Left Joystick

15-18 Direction Pad - Up / Right / Down / Left

19 Mode Button

20 LED Indicator

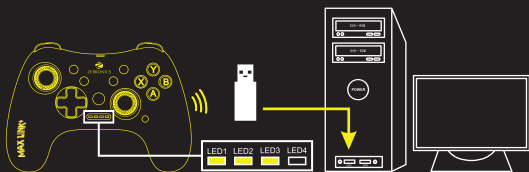
21 Right Joystick

22 RGB Control

X-Input Mode

1. Press MODE to power on the controller, LED 1,2,3,4 flashes waiting for matching.
2. Plug the receiver to USB port of the PC device.
3. Gamepad connected successfully to device with LED 1,2,3 long on & 1s vibration feedback.

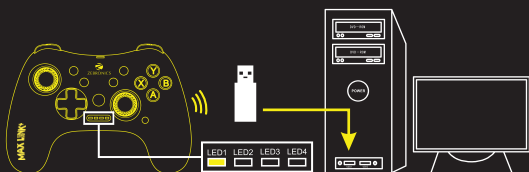
Compatible for Windows 7 / 8 / 10



D-Input Mode

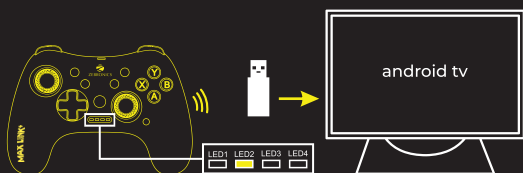
Press the MODE button while under X-Input, the game pad mode switch to D-Input Mode, the LED turn to LED 1.

Compatible for Windows 7 / 8 / 10



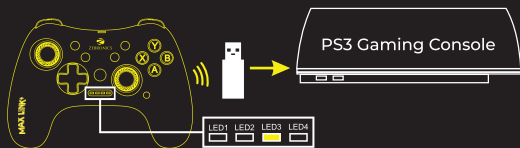
Android Input Mode

1. Press MODE to power on the controller, LED1,2,3,4 flashes waiting for matching.
2. Plug the receiver to USB port of the Android media box, android tv set.
3. Gamepad connected successfully to device with LED 2 long on & 1s vibration feedback.



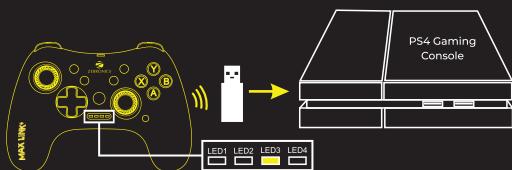
PS3 Controller Mode

1. Press MODE to power on the controller, LED1,2,3,4 flashes waiting for matching.
2. Plug the receiver to USB port of the PS3 Gaming Console.
3. Gamepad connected successfully to device with LED 3 long on & 1s vibration feedback.



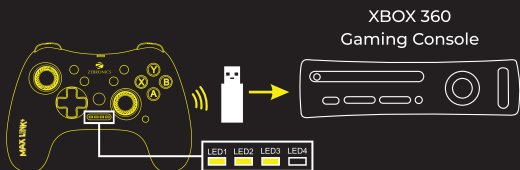
PS4 Controller Mode

1. Press MODE to power on the controller, LED 1, 2, 3, 4 flashes waiting for matching.
2. Plug the receiver to USB port of the PS4 Gaming Console.
3. Gamepad connected successfully to device with LED 3 long on & 1s vibration feedback.



XBOX 360 Controller Mode

1. Press MODE to power on the controller, LED 1, 2, 3, 4 flashes waiting for matching.
2. Plug the receiver to USB port of the XBOX 360 Gaming Console.
3. Gamepad connected successfully to device with LED 1, 2, 3 long on & 1s vibration feedback.



Turbo Function

Press and hold the TURBO button and the other button (A/B/X/Y) of preference, for 5 seconds. This helps to use the key for continuous input while gaming. To disable the function, you can press and hold the CLEAR button and the other button (A/B/X/Y) selected previously, for 5 seconds.

1.For setting Turbo Function in Maximum speed :

Press & Hold the TURBO button and UP arrow button simultaneously.

2.For setting Turbo Function in Medium speed :

Press & Hold the TURBO button and RIGHT arrow button simultaneously.

3.For setting Turbo Function in Minimum speed:-

Press & Hold the TURBO button + DOWN arrow button simultaneously.

LED Modes :

Press the dedicated LED button to switch the Built-in LED modes.

(Dynamic LED, Static LED & LED OFF)



ISO 9001:2015 Certified Company
www.zebronics.com