



Gamer's Dream



Premium Gaming Headphone

**ZEB CRUSHER**

**User Manual**

[www.zebronics.com](http://www.zebronics.com)

Dear customer,

Thank you for purchasing the **ZEB-CRUSHER** Premium Gaming Headphone. Please read the user manual carefully before usage & save it for future reference.

### Note

- ✓ Avoid the usage of this product at the high temperature and high humidity environment.
- ✓ Avoid the self-disassembly of the product as it results in the failure of Warranty.

### Caution

Listening at high volume can cause hearing impairment. Please limit your usage time at high volume.

### Features

RGB LED Lights with On / Off switch

Padded adjustable Headband

Extra soft ear cushion

Flexible Mic

PC Compatible

2m Braided Cable

Gold Plated nickel USB

MIC on-off Control

3D Surround Sound control button

50mm Neodymium drivers

Lightweight & comfortable

Powerful Bass

## Specification

Driver Size	: 50mm
Impedance	: 16Ω
Response	: 20Hz - 20kHz
Sensitivity	: 114dB ± 3dB
Microphone Impedance	: 2.2kΩ
Microphone Sensitivity	: -38dB±3dB
Connector type	: USB
Cable length	: 2m
Net. Weight	: 313g

## Package Contents

- ✓ ZEB-CRUSHER Headphone
- ✓ QR Code Guide

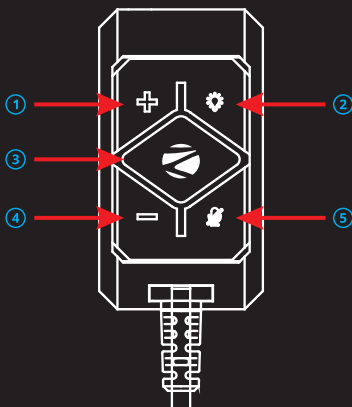
## System Requirements

- ✓ Operating Systems Windows XP/7/8/10
- ✓ USB 2.0/3.0 Port

## Quick Start

- ✓ Plug your headset into Computer's USB Slot
- ✓ Adjust the Volume before Listening
- ✓ Adjust the Microphone Direction.

## In-line Controller



- ① Volume +
- ② RGB Light ON/OFF
- ③ Mute
- ④ Volume -
- ⑤ MIC ON / OFF

## ZEB-Crusher Software

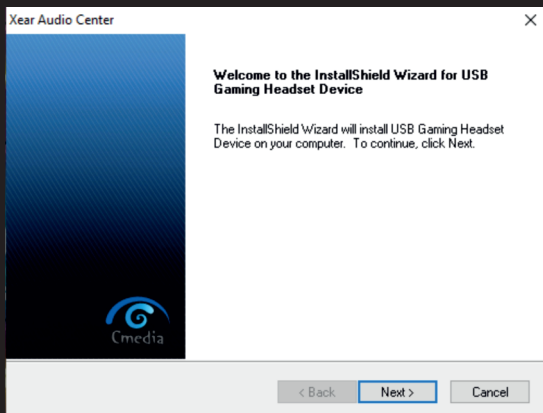
ZEB-Crusher Gaming Headphone comes with a Sound MX Software. You can download the driver from the provided link, <https://zebronics.com/pages/drivers>

You can use this Software to create 7.1 Virtual Surround Sound for your Game.

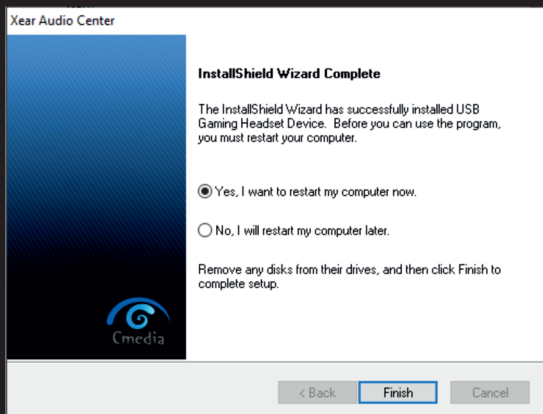
## Installation

*Note : Keep the headset plugged into computer's USB Slot while installing.*

## 1. Click "Next" and Follow instructions to Start Installation



## 2. Click "Finish" to restart the System before you Start using the Software.



# Speaker Customization

The screenshot displays the Windows audio control panel interface. At the top left is the Windows logo. The top bar contains playback information: Playback 2, Speakers Out, Capture 48 KHz, and Mic In. A volume slider is visible on the right. The main area is titled "Volume Control" and features three vertical sliders: "Master" (set to -7.34 dB), "Front L" (set to -7.34 dB), and "Front R" (set to -7.34 dB). On the left side, there are icons for "Headphone" and "Mic", both with checkmarks indicating they are active.

Control	Value
Master	-7.34 dB
Front L	-7.34 dB
Front R	-7.34 dB



ISO 9001:2015 Certified Company  
[www.zebtronics.com](http://www.zebtronics.com)