



Gamer's Dream

Simulated **7.1**  
Surround Sound



Premium gaming headphone

**ZEB JET 7.1**

**User Manual**

[www.zebronics.com](http://www.zebronics.com)

Dear customer,

Thank you for purchasing the **ZEB-JET 7.1** Premium Gaming Headphone. Please read the user manual carefully before usage & save it for future reference.

### Note

- ✓ Avoid the usage of this product at the high temperature and high humidity environment.
- ✓ Avoid the self-disassembly of the product as it results in the failure of Warranty.

### Caution

Listening at high volume can cause hearing impairment. Please limit your usage time at high volume.

### Features

- ✓ Gaming Headphone with Multicolor Lights
- ✓ Advance Windows Software
- ✓ Simulated 7.1 Surround Sound
- ✓ 40mm Neodymium drivers
- ✓ Extra Soft Ear Cushion for Comfort
- ✓ Lightweight design with Suspension Headband
- ✓ Flexible Mic

## Specification

Driver Size	: 40mm
Speaker Impedance	: 32Ω
Frequency Response	: 20Hz - 20kHz
Sensitivity	: 120dB ± 3dB
Microphone	
Impedance	: 2.2kΩ
Microphone Sensitivity	: -38dB±3dB
Connector type	: USB
Cable length	: 2m
Net. Weight	: 295g

## Package Contents

Headphone	: 1 U
QR Code Guide	: 1 U

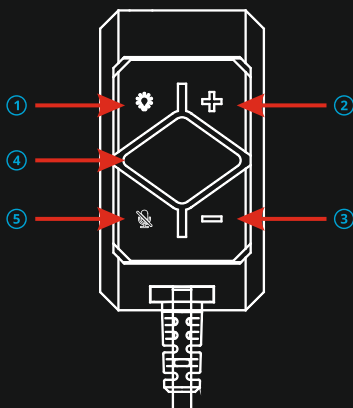
## System Requirements

- ✓ Operating Systems Windows XP/7/8/10
- ✓ USB 2.0/3.0 Port

## Quick Start

- ✓ Plug your headset into Computer's USB Slot
- ✓ Adjust the Volume before Listening
- ✓ Adjust the Microphone Direction.

## In-line Controller



- ① RGB Light ON/OFF
- ② Volume +
- ③ Volume -
- ④ Mute
- ⑤ MICON/OFF

## ZEB-JET 7.1 Software

JET 7.1 Gaming Headphone comes with a Sound MX Software. You can download the driver from the provided link, <https://zebronics.com/pages/drivers>

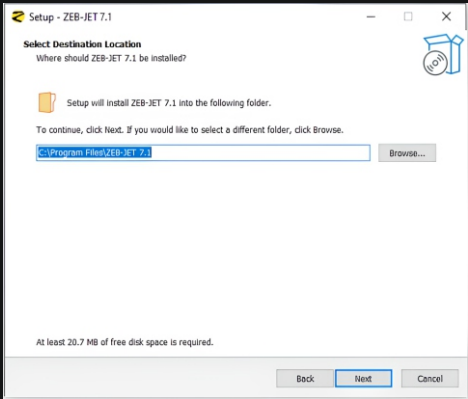
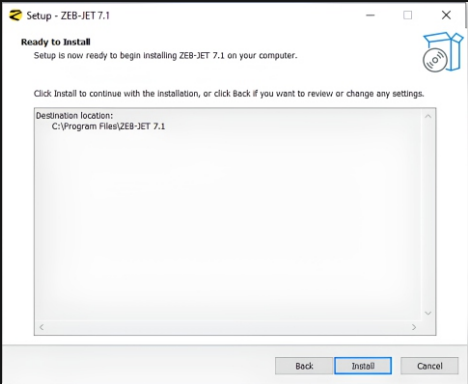
You can use this Software to create 7.1 Virtual Surround Sound for your Game.

## Installation

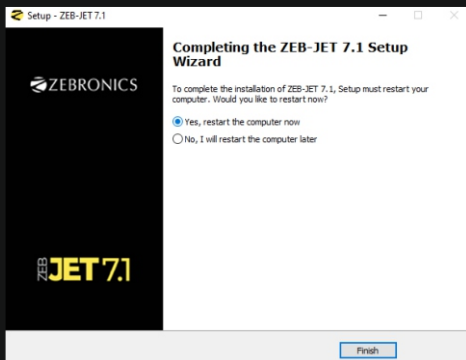
*Note : Keep the headset plugged into computer's USB Slot while installing.*



# 1. Click **"Next"** and Follow instructions to Start Installation



2. Click **"Finish"** to restart the System before you Start using the Software.



## Software Controls:

### Headphones volume control:

The headphones volume can be controlled by the software by adjusting the volume level as shown in the below image.



## Environment Effects:

**Enable Environmental Effects :** Toggle this option ON to simulate various acoustic environments and enhance your listening experience.



**Environment :** Under environment option users can choose from the following immersive soundscapes (Eg. Living Room, Forest, Cave, etc)

**Room Size :** Under environment option users can choose 3 different room sized ( Small, Medium & large)

## Speakers:

Right-click on the speaker icon to view additional options.



## 1. Volume Control

Customize your audio output levels to suit your preferences. The volume control is divided into two main modes: Master Volume and Independent Channel Control - Front

- **Master Volume**

This is the default control that adjusts the overall volume level for both the left and right headphones simultaneously.

**How to Use:** Adjust the main volume slider to increase or decrease the sound level in both ears equally.

## Independent Channel Control (Left & Right) - Front

For more precise audio customization, you can adjust the volume for the left and right headphones independently.

**How to Use:** Locate the lock icon (🔒) in-between the L & R and click it to unlock (🔓).

Two separate sliders for the Left (L) and Right (R) channels will appear.

Adjust each slider to your preferred balance.

Click the lock icon again to re-lock the settings and prevent accidental changes.(Recommended)



## 2.Sample Rate:

This setting controls the audio quality and compatibility for playback. For most modern uses like gaming, movies, and streaming, 48 kHz is recommended.

**48 kHz (Recommended):** The standard for video content and gaming. Provides high quality and broad compatibility for a general-purpose PC.

**44.1 kHz:** The standard for Audio CDs. Choose this if you are primarily listening to music from CD sources.



## 3.Equalizer (EQ) Settings:

The Equalizer allows you to adjust the balance between different audio frequencies (bass, midrange, and treble), enabling you to customize the sound signature to match your music genre, game, or personal preference.

- **Enabling the Equalizer**

To activate the equalizer, simply check the box next to "Enable Equalizer".

- **Equalizer Modes**

You can use the equalizer in two primary ways:

### **A. Using Preset Profiles**

For instant optimization, select a preset that matches your audio content.

**How to Use:** Click on a preset button (e.g., Default, Bass, Treble, Rock, Jazz, Dance, Classic) to immediately apply its unique frequency curve.

### **B. Manual Customization**

For full control, you can create your own custom sound profile.

**How to Use:** Adjust the individual frequency sliders to your liking.

Save your custom configuration by typing a name into the "\*Please input preset name..." field and save it by clicking the save button. Example as shown below.



**To Delete a Customized EQ:** Select your saved preset from the list and then click the Delete (Bin) icon to remove it permanently.

**4. 7.1 Virtual Speaker Shifter:** Enable this feature to experience immersive virtual 7.1 surround sound on your headphones, creating a multi-directional audio environment that enhances spatial awareness in games and movies.



# 1. Enabling Virtual 7.1 Surround Sound

To activate the virtual surround sound, check the box next to "Enable 7.1 Virtual Speaker Shifter".



## **A. Virtual Speaker Layout**

The diagram shows the 7 virtual speakers and one subwoofer that are being simulated:

**Front:** L (Left), R (Right), C (Center)

**Side/Surround:** Ls (Left Surround),  
Rs (Right Surround)

**Rear/Back:** Lb (Left Rear), Rb (Right Rear)

**Bass:** W (Subwoofer)

## **B. Individual Channel Volume Control**

Each virtual speaker has its own volume slider.

You can adjust the volume of any individual channel to balance the sound to your preference.

## **C. Adjusting Speaker Position & Volume**

Use the rotation and movement controls to reposition the virtual speakers for a more personalized soundstage.

Adjust individual speaker volumes (L, R, C, Ls, Rs, Lb, Rb, W) for balanced surround output.



- Clockwise Rotation



- Anticlockwise Rotation



- Rotation Snap



- Manual Virtual Speaker  
Adjustment Mode



- Restore Default Speaker  
Position & Volume Settings

## 5. Xear SingFX:

This feature allows you to customize your audio experience by adjusting pitch and vocal presence:

**Enable Key Shifting:** Adjust the pitch of the sound output. Slide left to lower the pitch (Pitch Down) and right to raise the pitch (Pitch Up), allowing for tailored audio effects during gameplay or music playback.

**Enable Vocal Fading:** Control the voice audio fading. Use the slider to balance the voice level from full presence to slightly faded out.

Use the check boxes to enable or disable each feature as per your preference. Adjust the sliders to find the perfect audio setting that enhances your gaming or listening experience.



## 5. Xear Surround Max

The "Xear Surround Max" feature in your gaming headphone software takes normal stereo sound (two channels) and expands it to simulate an 8-speaker surround sound experience (virtual 7.1 surround). This means when you enable it, sounds from music or games feel like they come from multiple directions around you, making the audio more immersive.

You enable this by checking the box "Enable Xear Surround Max"



## Mic:

Right-click on the Mic icon to view additional options.

### 1. Volume Control

By enabling the microphone boost, the mic volume can be adjusted according to your preference.



## 2. Xear SingFX

**Mic Echo :** The Mic Echo can be adjusted from low to high by enabling the Microphone Echo option.

**Magic Voice :** Click on the "Magic Voice" button to open the menu of available voice effects. Select your desired effect from the list. Your voice will be transformed instantly.



### 3. Noise Reduction

#### 1. Enabling Noise Reduction

To activate noise reduction, check the box next to "Enable Noise Reduction".

#### 2. Adjusting Noise Reduction Level

Once enabled, you can control the intensity of the noise cancellation.





ISO 9001:2015 Certified Company  
[www.zebronics.com](http://www.zebronics.com)