



Gamer's Dream



ZEB Premium Gaming Mouse  
**CROSS HAIR**

**User Manual**

[www.zebronics.com](http://www.zebronics.com)

Thank you for purchasing **ZEB-CROSSHAIR** wired Premium gaming mouse. Please read the user manual before usage and save this user manual for future reference.

### **Note**

To know more about Terms and conditions for warranty policy, please visit <https://zebronics.com/pages/warranty-policy>

### **Features**

- 10+ RGB LED Light modes
- 6 level DPI switch
- 1.5m Braided Cable
- Works on most surfaces
- High Precision
- Plug and play
- Comfortable to use
- Customizable Magnetic Side Plates
- Dedicated RGB LED control button
- Advanced Windows software

### **Specifications**

Interface	: USB
Total No. of Buttons	: 7
Power Consumption	: DC 5V, 150mA
Sensor	: Optical

Max.Resolution	:1200,1600,2400, 4000, 4800, 7200 DPI
Button life	: 5 Million Cycles
Cable Length	: 1.5 Meters
Product Dimension (W x D x H)	: 7.6 x 12.3 x 4 cm
Net. Weight	: 110g

### **Usage of ZEB-CROSSHAIR gaming mouse:**

ZEB-CROSSHAIR software installation:

- Kindly download and install the ZEB-CROSSHAIR application from the following web link, in order to use the mouse with all the settings and features

<https://zebronics.com/pages/drivers>, you can search for your mouse model name in the search icon, download and install the software and you can notice the software interface as shown below

### **Usage of ZEB-CROSSHAIR mouse with the software**

1. You have 4 profiles Office, Game I, Game II, Game III in the bottom left of the software. This menu helps to map and customize the button functions.

2. At the bottom you can see the “Export” option to export your created profiles to your PC and import the saved profiles from your PC.

3. 'Reset' option helps you to reset all the saved settings in that selected profile and enters to the default settings.

4. 'Apply' option must be clicked to activate any changes made in the software to reflect in the mouse.

5. The mouse buttons on the screen would be represented using numbers. Once you click on the number you can see a drop down list of configurable options.







6. 'Advance Setting' section in the software consists of options such as DPI Control, Mouse Sensitivity, Double Click Speed and Scroll Speed. The mouse comes with a default DPI Settings which are 1200-1600-2400-4000-4800-7200. The DPI levels can be modified as per user requirement.

7. 'Mouse Sensitivity' option can be used to set the pointer precision as per the user preference.

8. 'Mouse Scroll Speed' option can be used to adjust or modify the scroll wheel sensitivity.

9. 'Double Click Speed' of the mouse button can be adjusted according to the user requirements.



10. "Music lighting" section can set the mouse lighting with respect to the music. Three different music response options are available. The image below can be taken as a reference.



11. "LED Setting" section gives a detailed set of options to select the desired LED mode of lights to be displayed on the mouse. It has 13 presets and OFF input mode. You can configure different modes of light by selecting the options accordingly.

[This section is depicted in the image below for your reference]

12. 'Macro' section dedicatedly provides options such as Macro creation, recording of macro, Export of created macros and Import of saved macros.

To create right click on the empty section under macro list and select 'Create Group' and provide a name to it.

Once created, Right click on newly created group and select “Add a new macro”. Then the created “macro list” column will resemble like the image below.

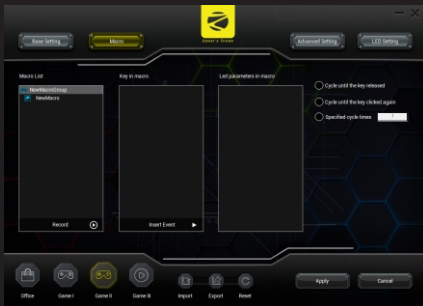


13. After the macros are created, select a specific macro within the group and click the 'Record' option to start recording the macro contents.



14. Once the recording option is selected, you can start typing the macro inputs on your keyboard and the software would register it to the selected macro.

(Example: After clicking record, type any word/sentence on the keyboard to assign it to the selected macro)



15. After the required macro details are typed, press the 'Stop' symbol to end the recording session. You can select the specific macro input to edit or remove it if required.



16. Assigning the recorded macros to a specific key/button in the mouse can be done from the 'Basic Setting' section. Select the key you want to assign with the newly recorded macro and choose it from the drop down to assign it with the specific key on the mouse.

[The following image below can be taken as a reference]

